

NEW PAINTINGS BY  
SAM KANER  
OF COPENHAGEN  
**At LITTLE GALLERY**  
915 East Maple, Birmingham, MI 4-5566  
Tuesday through Saturday from 9-6

**THE KLENTNER RIDING ACADEMY**  
6525 Willow Road  
Union Lake  
Is pleased to announce that owing to popular demand, a new series of "Horse Knowledge and Stable Management" classes (preliminary to the Horsemastership Course) will begin on Saturday, Jan. 23 and Sunday, Jan. 26. As there is a maximum enrollment, early application is advised to avoid disappointment.  
For brochure please call Mrs. Hughes  
MI 7-1117 EM 3-9171

david k. falvay and  
hugh c. white  
**Insurance Agency**

life  
C. L. U.  
fire  
automobile  
casualty  
home owners  
package  
policies  
hospitalization

**COMPLETE INSURANCE PROGRAMS ARRANGED**

217 pierce st., birmingham  
midwest 4-7803 and mi 4-3610

# Non-Credit Term Classes Announced

A schedule of 100 courses—including 39 completely new ones—was announced this week by the Division of Continuing Education, Oakland University, for a spring term which starts the week of Feb. 17.

A greatly expanded number of business, management, professional development and liberal arts courses is a feature of the spring non-credit program for adults.

For the first time some of these Oakland Continuing Education courses will be taught off-campus

at sites ranging from The Community House, Birmingham, to Northland Center, Southfield.

AMONG THE new courses for which registrations are now being taken at the university are Decision Making for Supervisors in Industry and Business, to be taught by Robert Eddy, supervisor of salaried personnel and training, Ford Motor Co. Tractor Plant; Promotional Communications, a new Business Letter Writing, taught by

Paul John, account executive Campbell-Ronald Co.; and Discussion and Conference Methods in Personnel Administration, taught by Dr. Rupert L. Gorright, professor of speech, Wayne State University.

Harry Van Hook, supervisor of education and training, Engineering Staff, General Motors Corp., will teach a course in Engineering Administration.

JOHN DAVENPORT, designer-illustrator with Ferd Prutcher Studios, Inc., will instruct Layout Design and Creative Illustration. Oakland's Seminar in Small Business Management will be offered in three locations; on campus, at Northland Center and at the YMCA, 7 Mile and Lahser, Detroit.

Fundamentals of Traffic Engineering will be taught by Alger P. Malo, director of the Department of Streets and Traffic, City of Detroit.

Variety is the keynote of the liberal arts offerings which range from studies of contemporary Russian literature to the Civilization of Ancient Greece. Thelma James, professor of English at Wayne State University, will instruct Backgrounds of the Bible.

Dr. C. David Jones, of the Lafayette Clinic, Detroit, will teach Psychology of Adjustment.

IN THE AREA of computers and data processing, three courses will be offered covering an introduction to data processing, basic computer concepts with emphasis on the use of computers in accounting and a course on programming for engineering problems.

New in the sciences will be a

**ART CLASSES**  
STARTING WEEK OF JANUARY 20th  
**ART SUPPLIES**  
FOR THE AMATEUR AND PROFESSIONAL  
**PICTURE FRAMING**  
EXPERTLY DONE IN OUR OWN SHOP

**REGISTER NOW FOR ART CLASSES**

1220 N. Woodward (E. Side)  
2 blocks South of 12 Mile Rd.  
CALL LI 8-7680  
Daily 9-6, Thurs. & Fri. 10-6 P.M.

ARTISTS' SUPPLY CENTER

## Movie Guide

Parenton Committee  
Birmingham P.T.A. Council

MOVIE	Green Sheet	National Legion of Decency
The Prize	A-MY	A-3
Password is Courage	GA	A-1
Magic Sword	A	A-2
The Ceremony	A	A-3
Stolen Hours	A-MY-Y	A-2
Tarriers	A-MY	B
When Comedy Was King	A-MY	A-1

\* recommended as superior entertainment especially for children

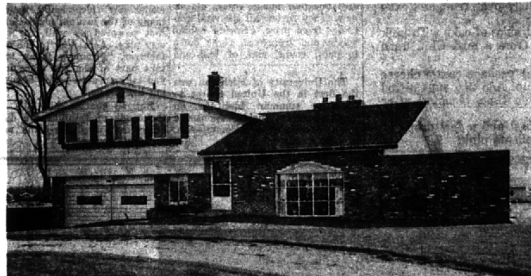
CODE  
GREEN SHEET

These audience symbols are intended as broad guides to selection, and do not indicate either recommendation or non-recommendation of the films to which they are applied.

A Adults  
MY Mature Young People  
Y Young People (12 years to 16 years)  
C Children (unaccompanied by adults)  
GA General Audience  
NATIONAL LEGION OF DECENCY  
A-1 Morally Unobjectionable for General Patronage  
A-2 Morally Unobjectionable for Adults and Adolescents  
A-3 Morally Unobjectionable for Adults  
B Morally Unobjectionable in Part for All  
C Condemned  
SC A separate classification is given to certain films which, while not morally offensive in themselves, require some analysis and explanation as a protection to the uninformed against wrong interpretations and false conclusions.

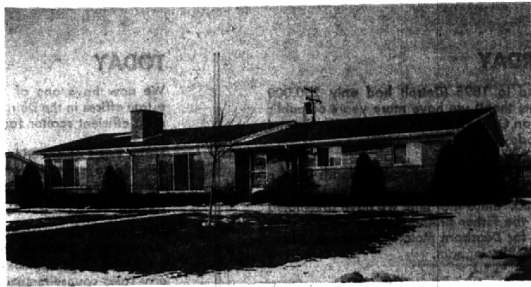
**A WORD . . . . .**  
to the wives.  
There's a view from every window . . .  
in *Overbrook*<sup>\*</sup>  
**MAX BROOCK INC.**  
MI 4-6700  
\*West Long Lake and Lahser Roads.

## More PIERCE Homes . . . . . Where The Price Is Always Right

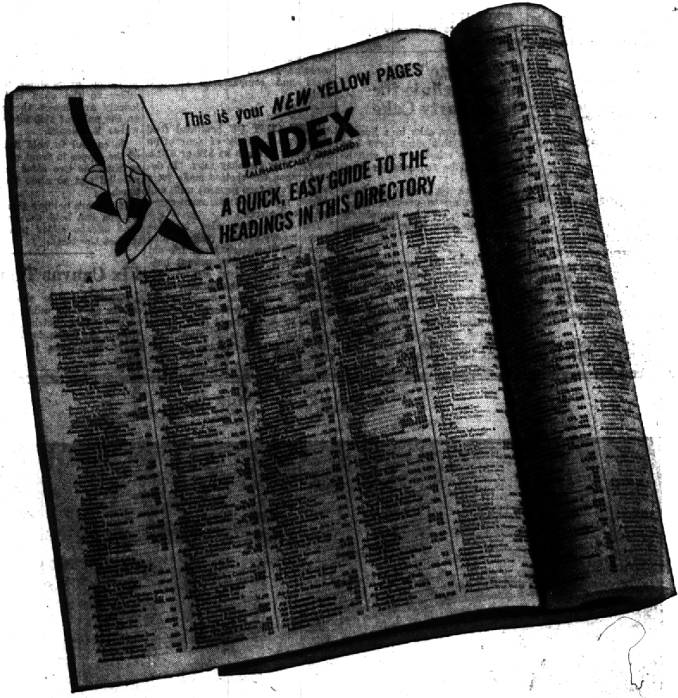
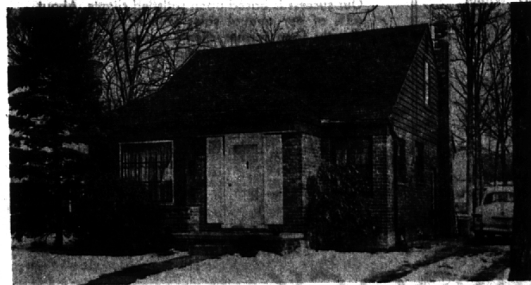


- Harlan School
- Twenty Foot Ceiling
- Giant Beams
- Huge Bedrooms
- Less than you'd expect
- See it tonight

- Clean Cut Ranch
- Good Kitchen!
- Good Family Room!
- Good Price!
- Good for You!
- (Yes—Full Basement)



- Young House For Young Family
- Low Taxes—Low Down Payment
- At the Price You Can Afford



## Look for the handy new INDEX in your 1964 North Woodward Area Yellow Pages!

Shopping the Yellow Pages way will now be faster and easier than ever before. For now there's a handy cross reference *Index* at the beginning of your new Yellow Pages . . . to show you exactly how everything is listed, and how to find it fast.

Even gives you the page number to turn to!

Suppose you want to rent a tuxedo for the big party coming up. No need to wonder if the Yellow Pages calls it a tuxedo, a dress suit, or a dinner jacket. Just look in the Index for the first heading that occurs to you . . . "Tuxedo Renting" for example. The Index will refer you to the correct classification ("Dress Suit Renting") and will tell you the page you'll find it on.

Turn there and presto! . . . a complete list of all the rental shops in your area.

Speed your shopping. Always look first in the new *Index* of your Yellow Pages.



LET YOUR FINGERS DO THE WALKING—SHOP THE YELLOW PAGES WAY



**FRED PIERCE INC.**  
460 NORTH WOODWARD, BIRMINGHAM, MICH.  
Midwest 7-1414