

UN Report to Be Given By Pauline Frederick

Birmingham Town Hall will present Pauline Frederick, a reporter of United Nations news, at 11 a.m. Jan. 30 and 31 at the Birmingham Theater. Her subject will be "UN at the Crossroads."

For the last three years Miss Frederick has been on the Gallup Poll list of the world's "10 most admired women." She has her master's degree in international law from American University and numerous honorary degrees for distinguished service in journalism. She is the only woman ever to be elected president of the U.N. Correspondents Association.

AS NBC NEWS United Nations correspondent, Miss Frederick covered the crises in Korea, Suez, Hungary, the Middle East, Laos and the Congo, as well as the troubled months following the death of Secretary-General Dag Hammarskjöld.

She appears on such TV programs as "Today," "Huntley-Brinkley Report," "Meet The Press" and news specials. She also has a daily radio news program. Miss Frederick will be introduced to the Town Hall audience on both days by Mrs. George N. Hillinger, past president of the League of Women Voters.

CELEBRITY luncheons at the Birmingham Country Club will follow the lectures.

Guests at the speaker's table will include Mrs. C. F. Pearson, who is president of Town Hall, Mrs. Hillinger, the Rev. Dr. and Mrs. Kenneth H. Gass, former governor and Mrs. Murray D. VanWagoner, Mrs. Dorothy Keane Roosevelt, Mrs. George Cary and Mrs. Ben Ragland of the Town Hall Board. Mrs. Ralph Backus will be the hostess.

Admission to Town Hall is by season ticket only.



PAULINE FREDERICK

Lecture Series Begins at BAA

Thirteenth-century art will be discussed by painter Clifford B. West from 7-8:30 p.m. Tuesday in the opening lecture of a series sponsored by the Bloomfield Art Association. Five talks on group and individual attitudes and techniques of sculptors and painters are scheduled at the Birmingham Art Center, 1515 S. Cranbrook.

WEST ALSO WILL give the second lecture, on the Renaissance, Feb. 4. He is a Bloomfield Hills resident, with his home and studio at 225 Lone Pine Road.

Two University of Michigan professors are the other series speakers. Sculptor Thomas McClure is scheduled for Feb. 18 and 25 and painter Guy Palazzola for March 10.

Lectures may be attended by series ticket, or separately by registration.

Promotion Manager Talks About Station

A Glenn Kyker, 2206 W. Lincoln Road, Birmingham, was speaker at a meeting of the Gross Pointe Motion Picture and Television Council Monday.

Kyker has been promotion manager of WJZ stations since 1954. His talk outlined the role of the promotion department in a major radio and television facility serving a metropolitan market.

U-M Offers 30 Courses In Oakland

Students can still register during this first week of spring semester classes offered by the University of Michigan Extension Service.

Thirty courses are being held in Oakland County, served through the Flint branch of the Extension Service. All courses are taught by U-M faculty.

Classes in Birmingham at Derby Junior High School include

"Survey of Asia: Japan," "Frontiers of Human Development," "Modern High School Curriculum," "School Plant Planning," "Contemporary Literature: Drama" and "American Philosophy."

ADULT EDUCATION courses for Birmingham include "Developing Executive Secretarial Techniques" and "Psychiatry: Its Use and Limitations," both at Stroh-

High School. "Twentieth Century British and American Literature" will begin Feb. 11 at the Baldwin Public Library.

In Bloomfield Hills "Major Cultural Developments in Prehistory" and "Moral and Rocks" meet at the Cranbrook Institute of Science.

Held at Cranbrook School for Boys are "Major English Authors of the Renaissance Period," "Emergence of the Modern United

Designers Honored As Lunch Guests

ONE COURSE IS offered in Southfield, "Asia in the Modern World," at Southfield High School. The entire program includes courses on both the graduate and undergraduates level, with two semester hours of credit. Classes meet for 15 sessions from 4:30-6:30 p.m. or 7:30-9:30 p.m.

Fees must be paid before the second class meeting.

Birmingham designer Hugh Acton and New York designer Raymond Lowry were guests of honor of Youngstown Steel at a Society of Automotive Engineers meeting Jan. 14 in Detroit.

Acton lives at 683 Brookside Drive, Birmingham. His studio, formerly on Hamilton, is now at 185 Brownell.

GORGEOUS HOMES

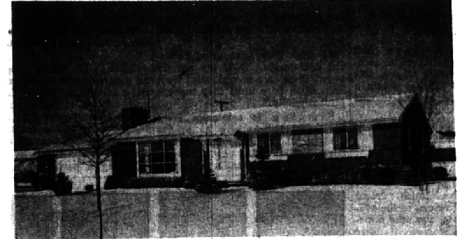
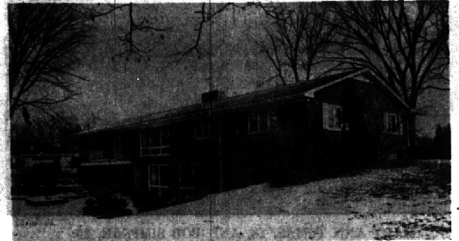


You'll have sweeping views of a wooded ravine, complete with bubbling brook from the exotic games room of this bi-level rambler. Four bedrooms, four baths, two family rooms, sprinklered grounds. Near Birmingham schools. In the sixties.



The clean lines of this Beverly Hills home are an indication of the luxurious interior. Completely air conditioned, it has 3 spacious bedrooms, jalousied porch, a terrific entertaining room with bar and lovely carpeting and draperies. Full basement. An excellent value at \$32,900.

AND WELL PRICED TOO!!



One of Westchester's nicest homes is this nearly new rambler. In top condition, it has 3 good sized bedrooms, large living and dining rooms, and large play room. Storms and screens. Kitchen built-ins included at \$29,900.

KEATING CAN SELL YOURS TOO!!



245 S. WOODWARD

MI 6-1234

BRIDGE in BIRMINGHAM

By BUD MAYBAUM
Southern Michigan Bridge Association

When playing with one of the biggest names in bridge, my partner paid his cards down on the table, as dummy, and at the conclusion of the hand, our opponents asked my partner why he hadn't bid a certain bid that they felt the book calls for. He explained that rules are for beginners and a guide for experienced players.

My hand for today bears out this conclusion. Certainly one never sacrifices with a vulnerable hand against nonvulnerable opponents, but this hand is the exception. Maybe you remember this hand was played at the Birmingham YMCA recently and wondered at the results.

North and South Vulnerable: Dealer: North

NORTH (Dealer) (LYNN WESTHOVEN)

♠ K Q J 5 4
♥ 8 7 3
♦ Q 8 8
♣ 9 4 3

WEST EAST

♠ 3 ♠ 7
♥ Q J 6 2 ♥ A K 10 9 5
♦ J 5 2 ♦ A 10 7
♣ A K J 6 2 ♣ Q 10 8 5

SOUTH (SUE BODARY)

♠ A 10 8 8 6 2
♥ 4
♦ K 9 6 4 3
♣ 7

The bidding: SOUTH WEST

1♠ 1♥ 1♠ 3♥
3♠ 4♥ 4♠ 4♣
all pass

Opening lead: K♣

East and West with high card points surely wanted to taste some vulnerable setting tricks. Had the vulnerability been the same, East and West would have tried to live hearts which was in the bag. Maybe they were greedy.

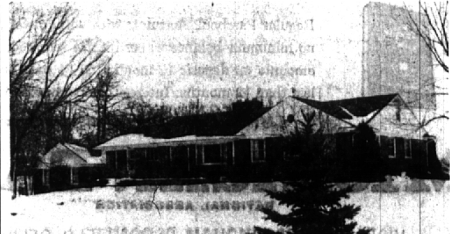
I certainly had an overall, and her partner knew that these high spades could only help her. It was possible that West could have had North's spades and held all the diamonds that Sue was missing, and she would have gone down a mint, but we cannot have all contract insured.

FOR YOU WHO wish to play in the winner's game, I must advise you of another change. It will now be played at the St. Clair Inn in St. Clair, Mich., at 6:30 p.m. Sunday.

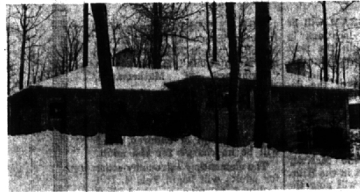
You can take the new turnpike there, and go early and have dinner at the lovely St. Clair Inn. Recent winners in Birmingham tournaments include Esther Clarke and Greta Howard, Pat Holloway and Jim Crabbe, Larry Nixon and Jewel Thompson, Ollie Swartzwelder and Hilda Maly, Charles Thamer and Peter Drees, Mary and Sandy Stevenson, Donna Zwirodzky and Ruth Guild.



ROOM FOR ALL—A large family will truly enjoy living in this surprising multi-level home. There are 4 BIG TWIN BEDROOMS, 2 huge family rooms (one on the upper level and one on the lowest level), 2 full baths plus 2 lavs, maid's room, and att. 2 car garage. DON'T MISS IT! \$49,900.



PEACE AND QUIET—You'll find a friendly "in home" feeling in this Colonial Bi-level. With spacious rooms throughout, there are 3 bedrooms, relaxing library plus TV room, formal dining room, 2 fireplaces, 2 1/2 baths, recreation room, and att. 2 car garage. LOOK! \$40,500.



TOWERING TREES—A beauty spot in winter or summer, this substantial brick ranch has 2 nice bedrooms, paneled library, exposed lower level activities room, hobby room, and att. 2 car garage. With nice carpeting, draperies, and loads of custom built-ins, IT'S VALUE PRICED! \$33,900.



FRANKLIN VILLAGE—With a wooded ravine and stream at the rear, this impressive E-shaped Ranch has had meticulous care. 3 excellent bedrooms, birch paneled family room with fireplace, cherry built-in kitchen, 2 baths, and att. 2 car garage. NEAT AND NICE! \$34,500.

HALL & YOUNG

REALTORS

INC.

Showcase of homes

"Twin Offices"

BIRMINGHAM 345 S. Woodward MI 6-7900
BLOOMFIELD 4114 W. Maple MA 6-5900
OPEN TIL 8 P.M.

"Showcase" features each home listed with Hall & Young in lighted photos and color slides. RESULT—more effective sales exposure for sellers and easier selection for buyers.