

Search Your Home Today  
For Lots Of . . .

**BURIED TREASURE!**



- Articles long forgotten can be sold quickly for cash, to families who need them.
- Families are always watching for living room furniture. You'll be surprised at the quick response you receive.
- Nursery items and furniture are in constant demand. See outgrown items now.
- Modernizing your kitchen? Unwanted items to you may be required by others.
- Want new bedroom furniture? Sell present pieces and apply cash on smart new designs.
- Most garages, attics, store-rooms contain treasure that will turn to much sought cash.

What better time than right now to clean the home from top to bottom of buried treasure, which when disposed of could bring you substantial amounts to apply on all those new things you and your family desire.

The quickest, most effective and least expensive method to turn idle goods to cash is to use a medium which takes people in the aggregate and reaches them fast.—The Birmingham Eccentric.

**birmingham's greatest want ad bargain!**

now  
you  
can  
run

**3** consecutive weeks for only **\$2<sup>70</sup>\***

\*15-word minimum—No change in copy on multiple insertions

PHONE MI 4-1100

AN EXPERIENCED AD WRITER WILL HELP YOU WRITE YOUR AD!

The Birmingham Eccentric

*Classified Ads*

**Reginald Carey Joins New Firm**

Reginald G. Carey, former vice president and account executive of Campbell Smith has joined Automated Systems International, as promotion manager it was announced by Stanley Brubaker, general manager of this department of Hughes Dynamics, Inc. Carey's experience includes many years in the automotive replacement parts and original equipment field as well as a wide range of product areas within the agency. In addition, he managed a manufacturer's representative company in Chicago for three years; spent seven years at Montgomery Ward in Chicago as a copywriter in mail order sales, and earlier was a hardware buyer-merchandise for Wards mail order and retail outlets. Carey lives at 2164 Avon Lane, Birmingham, Michigan.

**LeFevre Gets New IBM Assignment**

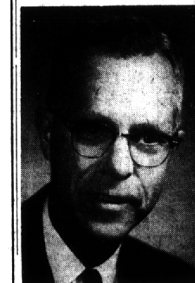
John M. LeFevre, 271 Fairfax, Birmingham, has been appointed as manager of recruitment, midwestern region, for IBM. In this position, LeFevre will coordinate personnel recruiting programs in sixteen midwestern states. Prior to his appointment, LeFevre was branch manager of IBM's downtown branch. He joined IBM in 1941 and has held positions of sales representative, special representative publications, administrative assistant to vice president of sales, manager publications special department, manager training midwestern region, branch manager Grand Rapids.

**Johnson Receives Nat'l Sales Award**

James L. Johnson, 2581 Cheswick Dr., Bloomfield Township, manager of Detroit Ball Bearing Co.'s branch operation on Mound Road in Warren, was first, nationally, to receive the "Outstanding Sales Achievement" award being given by Messinger Bearings, Inc., Philadelphia. Presentation was made at a company-wide meeting of branch managers by R. John Moore, D.B.E. president in behalf of R. J. Stuart, Jr., of Messinger.

**Ad Agency Names 3 New Executives**

Three new executives have assumed their duties at MacManus, John & Adams, Inc., Bloomfield Hills advertising agency. Robert C. Higgins has been appointed radio and television director. Robert Hungerford has been appointed a group art director; and Alan G. Pake is a new group copy director.



**G. E. ALTMANBERGER Bank Executive Position Accepted By B'field Man**

George E. Altmanberger of Bloomfield Hills has been appointed a vice president of Manufacturers National Bank of Detroit, it was announced by William A. Mayberry, chairman of the board, and Roland A. Mewhort, president. Altmanberger was director of the personnel service office of the Ford Motor Co.'s Industrial Relations Staff until he joined Manufacturers in 1963. After holding various cost control and financial positions with the General Motors Corp., Altmanberger joined Ford in 1948 as director of report analysis. His subsequent positions with the Ford Motor Co. were in the administrative areas of the budget and cost department section of the financial analysis department and the engineering administration and service area of the engineering and research staff.

**Dr. A. Lyle Campbell Podiatrist (Foot Specialist)** announces the opening of offices 357 W. Huron Phone 338-3929 Just East of Pontiac General Hospital



**Joins Legal Family**

Oakland County Circuit Court Judge Philip Pratt (right) congratulates the third member of the Hampton family to become an attorney, William. Looking on are the family's two other lawyers, (from left) brother Judge Pratt. He will practice in Pontiac in Detroit, and father Verne C. of Bloomfield Hills, whose office is in Pontiac. William, 2757 Windemere, Birmingham was one of 26 new attorneys admitted to the Bar recently in a ceremony presided over by Judge Pratt. He will practice in Pontiac with his father.

With **ANGUS MCKELLAR**

**Behind The Store Fronts**

Bee Kalt Travel Service, formerly located at 296 N. Hunter, is now settled in its new quarters, 4026 N. Woodward, a block south of 14 Mile Rd. An interesting feature of the office decor is a large wall clock, set in walnut paneling, which indicates simultaneously the correct time for the various time zones around the world. A downstairs room, with seating for 150, will be used for showing travel movies. The travel service is owned by Bee Kalt, Patsy Trumbull is manager.

**HAROLD TURNER** Ford, 464 S. Woodward, employs 100. Village Rambler, Inc., 666 S. Woodward, employs 37. This dealership was formerly known as Birmingham Rambler. It was recently acquired by Bill Farrash, Wilson—Pontiac-Cadillac, Inc., 1350 N. Woodward, counts 87. See you at the show! **BIRMINGHAM FINANCE** has closed its office at 114 S. Woodward, and is now consolidated with Baxter-Livingston Co., of Pontiac.

**Exclusive Italian knitted suits and dresses**  
Imported by Irene Sugar  
Shown by appointment only  
Many beautiful styles on sale  
Call UN 4-3511

**Our Invitation to You . . . VISIT OUR PILOT ROOM! SEE — HEAR PILOT COMPONENT SYSTEMS . . . in "engineered" cabinets.**

1. Custom-crafted genuine hardwood and veneer cabinets acoustically "engineered" for stereo.
2. Garrard automatic record changers.
3. Carefully matched Jensen speaker systems.
4. Eight furniture styles to choose from.

**LIBERAL TRADE-IN ALLOWANCE. EASY TERMS. Buy With Confidence**

**McCallum & Dean**  
RADIO—TELEVISION—HIGH FIDELITY COMPONENTS  
"Serving the Birmingham Area Since 1945"  
Closed at 1 P.M. Wednesdays — Open Friday Evenings 'til 9 P.M.  
409-11 East Maple Birmingham MI 4-5230  
Between Woodward and Hunter Blvd.  
Come in for a demonstration!

New address is 401 Pontiac State Bank Building. . . and Carolyn Nilson has moved from 772 E. Maple to the north side of Maple to Room 103, 1025 Stevens Building. Another recent move on E. Maple was that of the O'Connor Reading Clinic from 1040 E. Maple to 772 E. Maple, one block west. Their old location at 1040 E. Maple will become the site of a new Birmingham-Bloomfield bank branch. Architects are working on plans for the building, which will be erected later this year.

**Assets Up**  
Edward A. Rusin, president, Troy National Bank, announced that total resources now exceed \$5,000,000 for the year ending Dec. 31, 1963. Total deposits now exceed \$4,000,000. The bank was chartered September 20, 1962 and was capitalized for \$500,000. Total capital funds now aggregate \$525,000.

**Kingsley Inn**

Superb facilities for WEDDINGS  
Engagement Parties  
Bachelor Dinners

Incomparable atmosphere for BIRTHDAY PARTIES  
Wedding Anniversaries  
Family Celebrations

Ideal surroundings for BANQUETS  
Dinner Meetings  
Business Get-togethers

Perfect setting for OFFICE PARTIES  
Card Parties  
Cocktail Gatherings

MI 4-1400  
JO 4-5916