

Three B'ham Men Named to Select Insurance Group

Charles Chris, Leon H. Landsberg, G.L. and S. Miles Weissman, all of Birmingham, have earned membership in the 1964 Million-Dollar Round Table, the life insurance industry's 3,600-member elite international organization of million-dollar-a-year sales producers.

Membership in the select association is limited to members of the National Association of Life Underwriters, or its foreign counterparts, who sell at least one million dollars of new life insurance each year.

Chris, with Bankers Life-Norfolk is an 18-year veteran of the life insurance profession. He first became a member of the Round Table in 1957.

LANDSBERG, with Connecticut Mutual Life, has been in life insurance for 17 years, and first became a member of the Round Table in 1956.

Weissman, with Northwestern Mutual, has been in life insurance for six years, and first became a member of the Round Table in 1960.

Automotive Award Won by Patterson

A new award honoring outstanding achievement in the fields of automotive engineering, manufacturing and management was presented for the first time this week to Charles H. Patterson, executive vice president of Ford Motor Co.

Established as a symbol of automotive merit distinction, the award will be given annually by Automotive Industries Magazine, to an automotive executive whose career has included major responsibilities in these three branches of industrial activities.

In presenting the award, Hartley W. Barclay, Editor and Publisher of Automotive Industries, said that the lifetime accomplishments of the man who has combined the art and sciences of automotive engineering have contributed greatly to the engineering of American industry and engineering manufacturing and management.

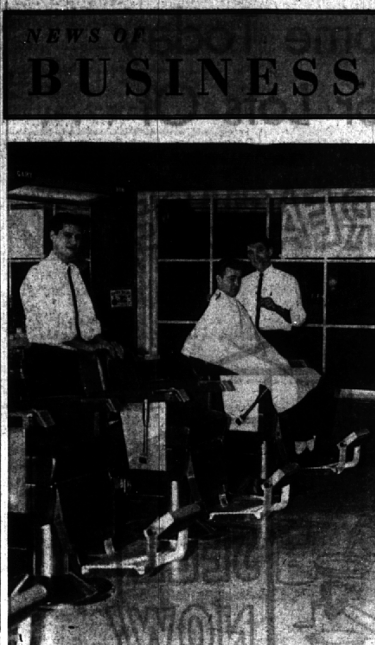
Until now there has been no occasion for an award which singularly recognized the contributions of automotive leaders in these basic fields, he added. The Paul Reveré award was selected as emblem of distinction because it exemplifies quality of design and manufacture, prominence of utility and service, and identification of modern functional ideals with the best materials and concepts of the past.

Patterson, it was stated, was the unanimous choice of the award committee because his career exemplifies the open road to advancement which exists generally for those who choose an automotive career.

Barclay pointed out that Patterson, 332 Harlan Drive, Bloomfield Hills, joined Ford Motor Co. in 1927 as a die maker at the River Rouge Plant and successively held diversified engineering, manufacturing, and management positions culminating in his present position as executive vice president where he shares the top level responsibility of the "Executive Office" of the company.

Assumes New Post

Donald E. Powers, former mayor of Bay City and a 12-year veteran of the insurance business, has been named manager of the Muskegon district of the Prudential Insurance company. Powers, who was training consultant for Prudential in Birmingham, before going to Muskegon, succeeds George Lawrence, who retired last month.



Opens New Shop

Charles Miller (in chair) was the first customer to get his hair cut in Robert Little's new barber shop at 526 N. Woodward. Little is doing the cutting and barber Gary Swieczkowski stands ready for the next caller. The new shop will be open from 8 a.m. until 6 p.m. daily except Wednesday and until 5 p.m. on Saturday. In addition to cutting hair the shop features a shoe shine service.

Griswold Elected Vice President of Power Reactor Co.

Detroit Edison vice president Arthur S. Griswold has been elected vice president and general manager of Power Reactor Development Co.

The election was announced by Walker L. Glaser who is president of both Power Reactor Development Co. and Detroit Edison.

Griswold, 6015 Pon Valley Road, Bloomfield Township, who assumed his new duties Jan. 1, 1964, has been granted a leave of absence from Detroit Edison to accept the post.

He joined Detroit Edison in 1922 and since 1957 has been vice president, responsible for atomic energy development programs, civic and community affairs, relations with industry associations and public information.

Wins Award

Raybestos-Manhattan, Inc. has announced that its Detroit District topped all others nationally in industrial rubber and mechanical packings and gasket material sales for the fiscal year ending Sept. 30, 1963. Leonard J. Quark, 1800 Pilgrim, is manager of the Detroit district office of Raybestos-Manhattan, Inc.

Burroughs Reassigns 3 Area Executives

Appointments of executives to new assignments occasioned by the recent reorganization and consolidation of several Burroughs Corp. manufacturing and engineering divisions have been announced by James R. Bradburn, vice president-manufacturing and engineering.

Herbert D. DeBorde, who has been corporate director of manufacturing since 1960, has been appointed general manager of the Michigan Manufacturing and Engineering Division. This division was formed by the consolidation of the Detroit and Plymouth Divisions.

Lyle Blossom, general manager of the Detroit division, has been named manager of general manufacturing activity, Michigan division. D. E. Stromback, general manager of the Plymouth division, will become general manager of the ElectroData Manufacturing and Engineering division, Pasadena, Calif.

J. B. RICE, JR., presently general manager of the ElectroData Division, will succeed DeBorde as corporate director of manufacturing and report to Bradburn. Brian W. Pollard, now corporate director of engineering, will be manager, data processing activity, Michigan division, and George Baird, Plymouth division's manager of engineering, has been appointed manager, operator attended equipment activity, Michigan division.

DeBorde, 780 Oakleigh Drive, Bloomfield Hills, has been with Burroughs since 1951 and has held several management positions at

Plymouth, Detroit, Military Electronic Computer divisions and Control Instrument division. He was appointed director of manufacturing in 1960.

Blossom joined Burroughs in 1961. He became assistant superintendent of Detroit Manufacturing and Engineering division in 1948 and since that time has had various management assignments in that facility. Since 1967 he has been general manager of the Detroit division.

Pollard, 202 N. Williamsbury, Bloomfield Township, joined Burroughs in 1969 as assistant to the general manager, ElectroData division, and previously had been manager of the computer division, Ferranti, Ltd., Manchester, England. He was appointed director of engineering in 1960.

Baird, 3375 Paddington, Bloomfield Township, had been with Burroughs 14 years when he was named manager of the electro-mechanical department at the laboratories in Paoli. He became assistant director of engineering in 1967 and in 1968 was transferred to Plymouth as manager of engineering.

Business Growing

There is a total of 7,325 businesses in Oakland County, according to statistics released by W. S. Garrison, district manager of the Detroit office of Dun & Bradstreet, Inc. This total is based on a physical count of the November, 1963 edition of the Dun & Bradstreet Reference Book.

BROKER - SALESMAN

Established Builder-Developer in the Birmingham-Bloomfield area has key opening for Sales Manager.

The man we seek must be well trained in new home Sales and/or Brokerage, enabling him to take full advantage of our expanding program. Prefer person experienced in the Birmingham Area.

Please submit complete history and outline. Eccentric Box No. 16-D.

THRIFT WEEK JANUARY 17-23



Benjamin Franklin's birthday, January 17, annually marks the beginning of Thrift Week... a good time to examine your savings program... a good time to start an insured savings account at Birmingham Federal Savings.

Thrift means more than careful spending... thrift means providing for your family's needs and future... savings are the key to this financial security. Savings at Birmingham Federal Savings earn a big 4% current rate, compounded quarterly... a thrifty way to start your 1964 savings program.

4% CURRENT RATE
COMPOUNDED and PAID QUARTERLY



Birmingham FEDERAL SAVINGS

Main Office - 99 W. MAPLE, CORNER OF PIERCE - MI 4-1711
Bloomfield Office - CORNER MAPLE and LAHSER - 646-1165
Berkley Office - 3055 W. 12-MILE RD. - LI 5-7610

AN ARCHITECTS model shows the new \$15 million shopping center to be constructed in Troy. The enclosed mall will house three major department stores, a supermarket and 70 additional specialty shops. Scheduled to open in the fall of 1965, Troyland will become the third largest shopping center in Michigan. Parking will be provided for more than 7,500 automobiles.

Plan \$15 Million Plaza for Troy

Plans for a major regional shopping center were announced by Jay M. Kogan and Allied Holding Co., co-developers, and Sears Roebuck and Co.

Allied Holding is the real estate subsidiary of Allied Supermarkets, Inc., which operates the Wigley, Big Value and Packers stores in this area.

Construction is scheduled to start in the late summer of 1964 with an anticipated opening date in the fall of 1965. Tentatively named Troyland, it will be located on a 128-acre site bounded by the new Chrysler (I-75) Freeway on the west, John R. on the east and 14 Mile Rd. on the south.

THE INITIAL PHASE of the development will be constructed on 82 acres and consist of over one million square feet of retail stores and services and will include the largest Sears store in the Midwest.

In addition, there will be two other major department stores, a Wigley supermarket and more than 70 other shops.

The entire project will be constructed around a completely enclosed mall, air-conditioned in the summer, heated in the winter and humidity-controlled the year around.



A. R. HARRINGTON

Detroit Agency Names Resident Vice President

Arthur R. Harrington has been promoted to vice president and Detroit manager of SCI Division of Communications Affiliates Inc., it has been announced by James C. Wickersham, president.

Harrington, 3246 Breckneridge, Bloomfield Township, will have supervisory responsibilities on the accounts of Buick Motor and GMC Truck & Coach divisions of General Motors. SCI is the sales-promotion affiliate of Interpublic Incorporated, management firm for a group of marketing communications companies which includes McCann-Erickson, Inc. SCI and McCann-Erickson operate in Detroit from the same offices at 1660 First National Bldg.

As Detroit manager Harrington succeeds R. Thomas Bragan, who last week was promoted to a McCann-Erickson vice presidency and appointed supervisor of the Buick advertising account.

Harrington joined SCI's New York office as a regional account executive early in 1959, transferred to Detroit as manager of the McCann-SCI field force in 1960, went to McCann as a Buick advertising account executive in 1961, then back to SCI as an account executive in 1962.

The mall area will be decorated with scenic fountains, statuary and objects d'art and will include rest and lounge areas.

PARKING CAPACITY for the shopping center will be in excess of 7,500 cars in traffic-flow engineered parking lots completely surrounding the building units.

The forty-plus acres in the second development phase will incorporate office buildings, a public auditorium, an indoor theatre, a bowling alley, restaurants and a variety of community service and recreational facilities.

E. Stanley Jones, area manager of Sears metropolitan District stores said, "This will be the third store in our locally planned expansion program. The first two already are under construction and will open in the fall of this year. This, the third and the largest Sears store in the Midwest, will encompass 350,000 square feet. It will incorporate lines of merchandise especially tailored to serve the trading area."

Kogan said that the Troy area had been selected for this shopping center after extensive surveys by his company in conjunction with Sears and Allied had revealed a 472,000 or 181,000 families.

"The studies also revealed," he said, "that present population shifts, encouraged and abetted by the extension of the Dequindre Sewer, the 12-Town Drain and Detroit Water, are moving in a northerly and easterly direction.

The developers emphasized that the specific site was chosen because of the convenient access from all major roads surrounding it.

The importance of 14 Mile Rd. as a major artery, the expanding freeway system, the proximity of I-75 with its entrance and exit interchange at 14 Mile Rd. all combine to place Troyland at the hub of the population growth in Oakland and Macomb counties in addition to serving a large portion of northern Wayne County.

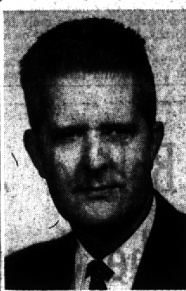
"IT IS ANTICIPATED that upon completion, Troyland will provide employment for upwards of 5,000 persons," Kogan said. "May- Robert Huber, City Manager, David Firestone and the Troy Commissioners, are to be complimented on their foresight and enlightened cooperation in the preliminary

QUALITY, EXTRUDED.

ALUMINUM COMBINATION DOORS SPECIAL (with this ad) \$25.50 (plus a charge)

We have Wooden Louvre Doors With Combination Screen & Glass

WOODCRAFT COMPANY
Serving Satisfied Customers Since 1923
1184 Grant, S. of Lincoln MI 4-0424



FARNO L. GREEN

B'field Man To Head New Corporation

Farno L. Green, 44, has been named vice president and general manager of Ex-Gelco's new subsidiary, Viso Corp.

Viso was established to explore the application of radioactive isotopes to problems in the fields of medicine and industry.

Green, 6934 Blandford, Bloomfield Township, is recognized as one of the country's top radio-isotope experts and has combined strong academic, theoretical, government, and business backgrounds.

Head of the department of physics at Howard College in Alabama at the age of 30, he left there to take the position of physicist at Oak Ridge National Laboratory where he spent the next five years.

In 1956 Green was named senior research physicist at General Motors Corp. where he remained as group leader for nuclear physics in the corporate's isotope research laboratory until leaving to direct the activities of Viso which he founded in 1962.

Make your list... put an Eccentric Classified Ad to work today. Get results in The Birmingham Eccentric. Most people Dial MI 4-1100 for better results.

steps toward this major commercial development in their area." Kogan also announced that Schostak Bros. and Co. had been named prime leasing agents for the development and the architects are Charles N. Agree, Inc.

Remember Your ABC's? They can be worth \$1650 more a year as they were to me...

SHORTHAND in WEEKS
Speedwriting

FREE, NATIONWIDE LIFETIME PRIVILEGES

New Classes Start January 27 (Day, School and Evening Division)

Pontiac Business Institute
18 W. Lawrence - Pontiac

4% CURRENT RATE
COMPOUNDED and PAID QUARTERLY

Birmingham FEDERAL SAVINGS

Main Office - 99 W. MAPLE, CORNER OF PIERCE - MI 4-1711
Bloomfield Office - CORNER MAPLE and LAHSER - 646-1165
Berkley Office - 3055 W. 12-MILE RD. - LI 5-7610