

# Every Apartment Deserves a Terrace

It looks as though our community has apartmentitis as we observe the extensive building this season.

You and I know that there is a great adjustment to be made for the occupant who had been accustomed to a fine home and a garden, then finds himself in an apartment, the door closes and the freedom of circulation has been curtailed.

The wise planner of apartments anticipates this situation and includes beauty spots such as petite terraces where the occupants can enjoy sitting outdoors. Privacy can often be achieved by the nature of the design with correct plant placement.

REAR EXITS To established apartments can be redesigned with patio blocks being placed right up to the structure wall with either a columnar hedge being placed next to the boundary or a semi-open fence selection. Flower pots can be arranged on the exit steps.

We must remember that the inside occupant does not benefit from flower beds being placed next to a structure wall.

Other established apartments have the cars parked in the rear with a park plan at the front entrance. Even these older sites can become "breathers" for the apartment dwellers by having two or three well-designed compact patios in the front entrance planning.

They must be small and not one large project because of semi-privacy being sought by those who might use them.

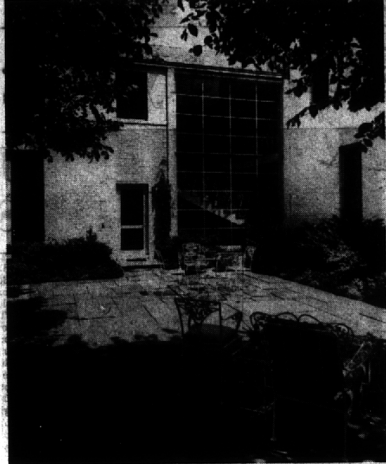
apartments more adaptable for living and no doubt delay the time when a move might be made—to give more freedom for living. Good design can carry a garden with a minimum of manpower hours, up-keep. I imagine the mail of apartment owners will be heavy, carrying marked clippings of this viewpoint.

THE OTHER DAY I heard of a good idea. You know the A-bar shape of the metal used to support the swings of youngsters. This form can be borrowed from the children (like the proverbial electric train) and covered with a heavy plastic material, easily shaped into shape, allowing a flap for an entrance. There you have a greenhouse for early starting of annuals, propagation of shrubs, etc. I would be inclined to place the structure in a sunny, protected location. It could be brought into use the first week in April or a little earlier. Branches of shrubs could be forced inside for earlier flowering.

When the production is over, you could fold up the plastic, return the swing to the children, and have the experience of having your own pseudo-greenhouse at a minimum expense.

JUST BEFORE a killing frost, Mrs. Ernest Seaholm gave me a start of a yellow marigold for the greenhouse from her flower border. What a joy to see the plants with yellow flowers all winter long.

Pat Hyland always used them in his greenhouse before moving to California.



ENJOYMENT OF THE outdoors for an apartment-dweller can be achieved by planting greenery to insure privacy on a moderately-sized terrace. Here, filigree furniture and a stone-paved walk enhance the beauty of an apartment patio.

gram, depicting various paths of yoga and their meaning.

SOME OF THE paths are Karma Yoga, work and action; Jnana Yoga, knowledge and study; Bhakti Yoga, devotion and love; Mantra Yoga, repetition of sounds and invocations; Raja Yoga, the highest form, the Yoga of Consciousness; and Hatha Yoga, the path of physical perfection which prepares the body and mind for all the other paths.

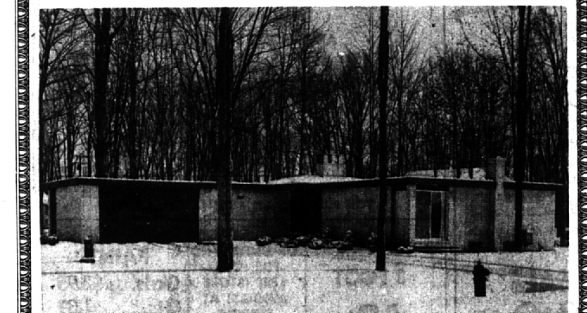
Yoga exercise classes began new 10-week sessions this month in many areas throughout metropolitan Detroit. Local classes are conducted at the Birmingham YMCA, 400 E. Lincoln, by Mrs. Margaret Donahue.

## Yoga Pageant Arranged for Art Institute

A Pageant of Yoga will be presented at 8 p.m. today at the Detroit Institute of Arts. The theme is "Paths of Yoga" and will be narrated by Mrs. Helen Swan of Royal Oak.

Assisting with the presentation will be Mrs. Cora Hall of Birmingham. Members of Self Realization Fellowship including yoga instructors will participate in the pro-

## DRAMATIC



THIS IS CONTEMPORARY AT ITS CLASSIC BEST—good clean lines, airy spaciousness — and NOTHING BUT THE BEST IN MATERIALS AND EQUIPMENT THROUGHOUT!

Set on a deep wooded site, the gorgeous view through the thermopane window-walls can't be shown in this picture. You'll have to come and see for yourself.

- Huge Living room with central hanging fireplace. Almost as large a Dining room (25x12).
- Breathtaking Kitchen with absolutely fantastic equipment and appliances.
- Master Bedroom with Dressing room — both very large.
- Two other Bedrooms which can be opened into one large room if that fits your needs. 2 Full Baths.
- Partial Basement with Recreation room.
- 2 1/2-Car Garage with electric opener. Circular Drive.
- De Luxe Carpeting and Draperies included.

MOST SPECTACULAR HOME WE HAVE SEEN IN THIS PRICE RANGE!  
Priced at \$44,500.

**SNYDER KINNEY & BENNETT**  
INC.  
Realtors

MI 4-7000 MA 6-9600  
239 S. Woodward, Birmingham 32740 Franklin, Franklin

## S'field School Opens Third Art Exhibit

The third annual art exhibition by Southfield High School students had its opening reception Wednesday in the school's new Little Gallery.

The enlarged gallery on the second floor of the high school's main building was made possible when the library moved to new quarters. New lights give the area a gallery feeling.

This year's show has a reputation to uphold; last year a student work received a national gold medal in the National Scholastic Art Awards, the first time Southfield High had won such an honor.

CATEGORIES for the show include oils, water colors, drawings, mixed media and collage; prints and designs; sculpture, pottery, crafts, jewelry and photographs.

Winning entries, judged by a committee of teachers, will be sent to Detroit for the regional exhibition of the Scholastic Art Awards opening Feb. 22.

The Southfield High School exhibition is sponsored by the art department and assisted by the art club. Student chairman is Sue Watson. Heading committees are Greg Fapp, Marvey Uday, Deanne Bednar, Dorothy Marr, Debbie Katz and Linda Jardack.

Charles Fensch is faculty sponsor and serves on the regional advisory committee for this year's Scholastic Art Awards.



ECCENTRIC PHOTO

## Artists for Children

Four instructors in children's arts classes at the Bloomfield Art Association are Chris Papadopoulos (seated, left), Betty Conn, George Landino (standing, left) and James Hansen. The children's drawing and painting program is geared to different age levels and is designed to test and stimulate a young artist's imagination. These teachers work with the children in a variety of painting media, primarily in oils. Materials and concepts concerning sculpture and ceramics also are covered in the program. Students' work is shown weekly at the BAA gallery.

The University of Michigan was the first college or university in the West to offer the period of preparation for student life called Freshman Week, in 1925.

**LAND CONTRACTS WANTED**  
EARL GARRETT REALTOR  
6617 Commerce Rd.  
Orchard Lake, Mich.  
EM 3-2511  
EM 3-4086



## IMMEDIATE OCCUPANCY

Bloomfield's finest apartment residence

Unmatched elegance for those accustomed to extravagant resort accommodations. 2 bath and 2 1/2 bedrooms. 24-hour apartment homes. Center entrance recreation facilities. Terrace dining rooms. Downstairs to private, landscaped patios. Facilities: air conditioning; covered parking; pool; putting green; shuffleboard; private entrance drive. Model apartment open daily 10 PM without fee and tours from 9 AM to 5 PM, 7 days a week.

## FOX CROFT APARTMENTS

HARLE AND TELERMAN BIRMINGHAM, MICHIGAN BROCHURE ON REQUEST 20-2028

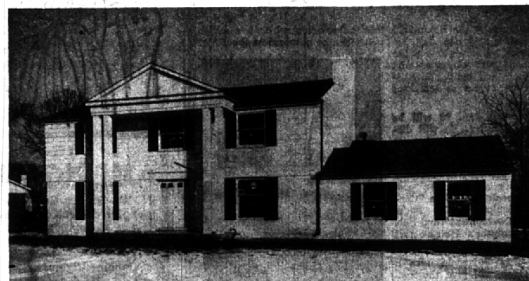
## BLOOMFIELD VILLAGE CLASSICS



### NEW ENGLAND CHARMER

- Authentic Colonial detailing throughout.
- First floor bedroom and tiled bath.
- Two spacious bedrooms plus sewing room or nursery on second floor—unusually large bath.
- Paneled den with bookcases and random width pegged floor.
- Large, bright breakfast area.
- Divided basement with playroom and dark room.

\$34,500.



### THE "BRADWAY HOUSE"

NEW HOUSES SHOWN BELOW—OPEN DAILY 1-5 P.M.

- Ready for decorating and personalizing.
- Four excellently proportioned bedrooms.
- Two tile baths also a powder room off foyer.
- 23x13.9 Family room with fireplace.
- 102'x165' site convenient to schools and shops.
- Efficient and equipped kitchen with breakfast area.
- Removable mullion window inserts.

\$38,900.



### THE "ORLEANS HOUSE"

- Lowest price in new housing in the Village.
- Excellent traffic pattern, huge closets.
- Four "twin" bedrooms and two full baths.
- Paneled Family Room with fireplace.
- Separate dining room with window wall.
- A kitchen which will delight the "cook" plus a large breakfast space.
- A "must see" when priced at

\$35,900.

Be Confident! — Look With

MAX BROOCK INC.

"Nationally Known Realtors"

MI 4-6700  
JO 4-6700

300 S. Woodward

Open Daily 9-8  
Saturday 9-5