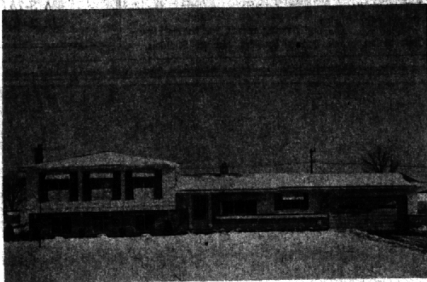


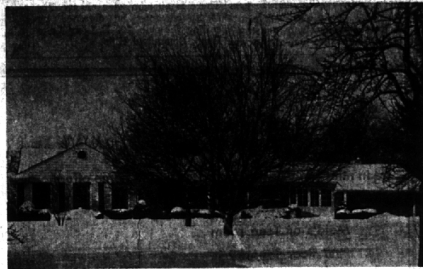
# NOW

That the Holidays are a pleasant memory — And the children have gone back to School — And the Family can sit down quietly by themselves and think—JANUARY



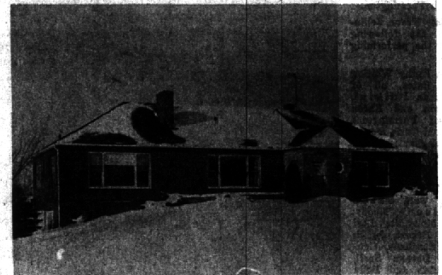
### 5-BEDROOM QUAD-LEVEL

One-year old and in "better than new" condition, on a large Country Site. Close to Schools, Shopping center and Bus to Birmingham, Northland and Detroit. Excellent Family room with fireplace. 29x13 Living-Dining room. 3 Full Baths. Shaded Patio. Beautiful carpeting and milium lined draperies. REAL VALUE at \$34,900.



### ON LOWER LONG LAKE

Secluded Scenic Site with MARVELOUS VIEWS. Brick Bi-Level with Huge Family room on lower level and Paneled Library on first floor. 3 Bedrooms, 3 full Baths. 2 Fireplaces. Living room with Bay. Separate Dining room. Site is more than 400 feet deep with house set back from road 210 feet. LUXURY-TYPE LIVING for \$59,500.



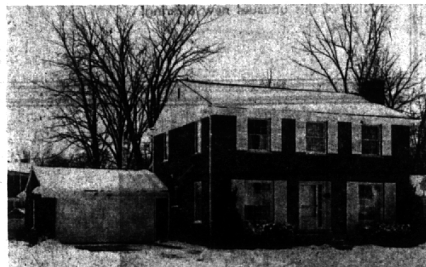
### SOLID MASONRY CONSTRUCTION

with steel truss joists under first floor. HUGE COUNTRY SITE (about 470 x 438) 3 Bedrooms (one of which can be converted to two). 2 full Baths. Living room with fireplace. Separate Dining room. Lower-level Family room with fireplace. ZONED FOR SINGLE RESIDENCE, SCHOOLS, CHURCHES OR LIBRARIES. Many possibilities. \$37,500.



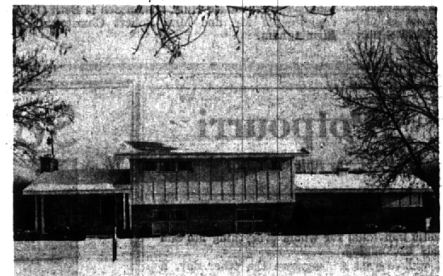
### CONVENIENT LOCATION

5 minute Walk to Woodward Transportation to Birmingham or Detroit. WALK to Parker School without crossing heavy traffic. 4 Bedrooms, 1½ Baths. Partial Basement. Excellent Kitchen with all built-ins including a NEW dishwasher. Early American decor new this summer. Also painted outside. ALL THIS FOR \$22,250. OWNER MUST SELL.



### CITY COLONIAL

Excellent location with many large Trees. Living room with fireplace. Separate Dining room. LIBRARY, TOO. Large Family room with fireplace on 1st floor. Kitchen with built-in oven and stove. Fenced yard. 3 Bedrooms, 2½ Baths. Full Basement. Always a good mortgage area. Quick Possession. \$34,500.

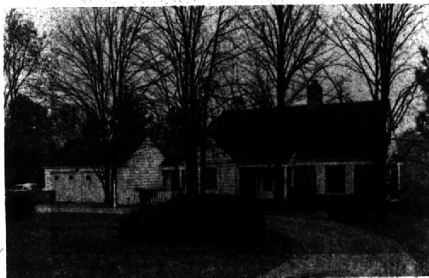


### CONTEMPORARY TRI-LEVEL

Country Site close to town. Charming Country Kitchen (24x14). Living room with fireplace. Separate Dining ell. Huge lower-level Family room with fireplace. 3 Bedrooms — 2½ Baths. Superb lawn and landscaping. Carpeting and Draperies thruout. PRICED AT \$32,500.

# IS the TIME TO

think seriously about your housing problems. HOW many times in 1963 have you wished for an extra Bedroom—for an Activities room large enough for all the children and guests—or a small Den in which to get away from it all—or at least one more Bathroom? Maybe you've wanted more land around the house and a sense of freedom—or—maybe you're tired of cutting all that grass and shoveling snow—



### BEAUTIFUL WOODCREEK FARMS

Huge park-like site on Rouge River. Hillside lot with gorgeous Trees and shrubbery. Early American Cape Cod with exposed Basement which has paneled Family room with fireplace. Very large Living room with fireplace. Separate Dining room. Screened Porch overlooking barbecue and picnic area on stream. Workshop and much storage in Basement. 3 Bedrooms, 1½ Baths. COUNTRY LIVING at its best. \$32,900.



### BEAUTIFUL LOCHSLEA LOCATION

WITH VIEW of the lake. Scenic lot with many trees. Colonial Ranch in the Bloomfield Hills School district and many charming features. Living room with fireplace. Huge Family Kitchen with fireplace, barbecue, beamed ceiling, pegged floor and cedar paneling. Large jalousied Porch. Anderson windows. Carpeting. Draperies. Many new additions and improvements. Priced at \$37,900.

# PLAN for 1964

Whichever is your problem—come in and talk over with us what you need and want. Avoid the Spring rush. HOUSING IS OUR BUSINESS—and we will be glad to help you

or

Wherever you want to live  
SEE US—We are now



affiliated with the largest inter-continental referral system in the entire United States. American Institute of Marketing Reputable—Reliable—Resourceful Systems, Inc.

**SNYDER KINNEY & BENNETT**  
INC.  
Realtors

239 S. Woodward, Birmingham

MI 4-7000

32740 Franklin, Franklin

MA 6-9600