

# Torch Drive Volunteers Plan South Oakland Campaign



South Oakland's Torch Drive gets underway as volunteers meet to plan the campaign. Grouped around the cash register on which they hope to ring up \$85,768 in contributions by Oct. 28 are (at left, from left) David W. Logan, Jr., of David Logan and Sons, manufacturers representatives, co-chairman, commercial, Birmingham-Bloomfield; Clarence W. Kraft, Mutual Benefit Life Insurance Co., co-chairman, commercial, Birmingham-Bloomfield; William Gard, Dura Corp., Oak Park, over-all community business chairman for South Oakland County; L. G. Johnson, Allegheny-Ludlum Steel Co., Ferndale, industrial chairman, South Oakland County; Leon Nies, Federal Works Division, Thompson Products, Southfield, South Oakland County Torch Drive chapter cultivation chairman; and Henry Olstyn, Ford Motor Co., Tractor Division, Birmingham, South Oakland County commercial chairman. Going over plans for the coming campaign are Henry Olstyn (at right, center) of the Ford Motor Co. tractor division in Birmingham, associate Torch Drive chairman, for commercial solicitation in South Oakland County, and his captains after a recent luncheon meeting at Cotter's in Royal Oak. Workers are (from left) Alan Begier, Western Auto Associate, Clawson; Ben S. Pearl, Northland Drug Co., Northland Center, Southfield; Olstyn; James Campbell, North Underwriters, Inc., Northland Center; and GERALD J. L'HEROUX, American Savings and Loan Bank, Oak Park.



Page 2-A B'HAM ECCENTRIC Thursday, Sept. 25, 1963

## Drag Strip

(Continued from 1-A)

Former Oakland County Democratic Chairman Draper Allen, 2348 Northlawn, Birmingham, has been elected chairman of the county's newly formed jury commission.

Allen's election to the post was announced Monday by County Clerk Daniel Murphy. Serving with Allen will be Mrs. Dorothy Rowley of Hazel Park and Waterford Township Supervisor Elmer Johnson.

The commission, which goes into effect in May, 1964, will be responsible for the selection of jurors from the county voter registration lists. Previously, the jurors were picked from the tax rolls.

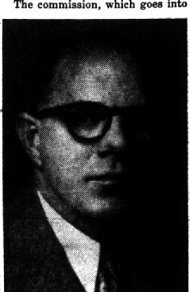
## Draper Allen Leads Jury-Selecting Group

ALLEN LOOKS UPON his new appointment as a "challenge to prove the importance and desirability of such a group."

IN ADDITION to his duties with the Democratic party, Allen has been active with the OPA (Office of Price Administration), the state board of tax administration and the Oakland County Defense Council.

He retired from his private plumbing and veneer business in Birmingham in 1960.

Since his retirement, Allen has been devoting much of his time to his hobby of political science and history. He has specialized in the life of Woodrow Wilson about whom he recently lectured before the History Convocation at Bethany College, Pa.



DRAPER ALLEN

ALTHOUGH THE commission will not go into effect until next spring, Allen said the group will meet informally to go over procedures and to study jury commission systems in Wayne, Macomb and Genesee counties.

The jury commission system, which has been sought by the Oakland County Bar Association, will be on a trial basis for the next two years.

Although Allen is a Democrat he was nominated by Oakland County Supervisor Harry Horton, Republican from Royal Oak Johnson and Mrs. Rowley, both Republicans, were nominated by Democrats.

## Commissioners: 'And Leave the Driving to Us'

Does Birmingham need Greyhound bus service?

City commissioners would like to know the answer to this question.

The commission Monday night took no action on a recommendation from City Manager L. R. Gage to ask the Michigan Public Service Commission to have the City reinstated as a flag stop on Greyhound routes until they find out from the public if the service is desired.

Commissioners agreed that if there was no great need for the service in Birmingham they would just as soon keep the buses out of the city.

GREYHOUND HAS gradually severed all service to Birmingham, including both passenger and package programs.

Gage said Birmingham residents now have to go to either Pontiac or Royal Oak for Greyhound service. He noted that the buses no longer enter the central business district but by-pass the city on Hunter Blvd.

Gage said he was told by the Public Service Commission that a public transportation company cannot abandon a service in a city without the permission of the governing body of that city.

IF THE flag service is reinstated, Greyhound buses will pick up and deliver passengers in Birmingham and those boarding within the city will pay cash fare when they board the bus.

Commissioners directed the administration to ask the Public Service Commission to hold a hearing on Greyhound service to Birmingham.

## Aid

(Continued from 1-A)

operating safety devices for school child protection.

He said he had received no answers, as yet, from the school districts. He said he has been advised that Bloomfield Hills School Board has received a legal opinion that tax revenues can not be used for that purpose.

WEST BLOOMFIELD action asking for speed reduction on Walnut Lake Road by the Oakland County Road Commission, came at the request of parents of children attending Green School.

Township Police Chief Mel Willis told the board that the present speed limit in front of the school is the general Michigan speed law of 65 miles per hour by day, 55 at night.

AT Will's recommendation, the board included Keith School as another area where reduced speeds would mean additional safety for school children.

## Blaze

(Continued from 1-A)

BIRMINGHAM fireman Joseph Sedano suffered a broken finger when he fell 50 feet from the roof of the home.

Early this week, Michaels praised the fire department for their work in saving his family and their efforts to save the home.

He also expressed his gratitude to his neighbors for jacking him and his family in and supplying them with food and clothing.

"I never thought people could be so kind and considerate," Michaels said. "People are just so wonderful."

Michigan State University think researchers are plotting and leaders in their field, having devoted more than 15 years of study to the improvement of quality and production of this northern fur-bearing animal.

## Open Meeting Set in County By Governor

Gov. George Romney will carry his campaign for fiscal reform to the southern Oakland County area Monday with an open meeting at 10 a.m. in the Farmers Market, Royal Oak.

The meeting is open to the public and anyone who wishes to learn about the governor's recommendations or comment on them is invited to attend.

The governor will make a brief presentation but most of his time will be devoted to personally conducting a question and answer session on the floor.

"I hope to be able to give people a better understanding of the objectives of my fiscal reform program and how it will affect them individually," Gov. Romney said.

"I ALSO HOPE" that they, in turn, will express their views about the program so that we may have a better understanding of how they feel."

For those citizens who wish to discuss tax reform with Gov. Romney alone, he will hold a citizen session from 8 to 9:30 a.m. Monday at the Oakland County Courthouse in Pontiac.

The governor initiated these five-minute meetings last Jan. They continued with few interruptions each Thursday morning in Lansing until mid-July when they were temporarily suspended to allow Gov. Romney to concentrate on his tax reform program.

They were resumed Sept. 19 in Lansing. About 570 persons have visited the governor during these sessions.

Getting ready to sell your car? Advertise it in the Classified Ads.

Of Michigan's 83 counties, 82 bear Indian names.

## The Birmingham Eccentric

Published weekly in The Eccentric Building, 1122 Bowers St., by the Birmingham Eccentric, Tolson, Midwest, 2-1100. Address all mail (subscription change of address, Form 3577) to 1222 Bowers St., Birmingham, Mich.

Henry M. Hogan, Jr., Associate Publisher

Second-class Postage Paid at Birmingham, Mich.

SUBSCRIPTION RATES	
One Year (in Oakland County)	\$5.00
Six Months (in Oakland County)	\$3.00
One Year (Outside Oakland County)	\$6.00
Six Months (Outside Oakland County)	\$3.50

personalized Christmas Cards 10% Discount If You Order Now!

Take our Christmas Album home... select the card you want in the quiet of your home with the family. Order now and save 10%!

**Bodines**  
172 N. Woodward  
MI 4-1177

## HANSEL 'N' GRETEL

ANNOUNCING A NEW CONCEPT IN FIRST SHOES

Baby's feet are soft and incomplete. They can be easily bent, warped or misshapen by shoes that are too small or too stiff. In Fleet Air 400's only the finest materials are used and only those construction methods known to result in maximum flexibility — have been employed.

**FLEET AIR 400**

**HANSEL 'N' GRETEL SHOPPE**  
135 S. Woodward Ave., Birmingham  
Free parking in rear Open Thurs. and Fri. night until 9 P.M.  
MI 6-4722

# MEDITERRANEAN

# RENAISSANCE

Discover the New "Modavanti" . . . a classic collection created by HERITAGE, inspired by the art and architecture of Spain, Italy and France, and brought to you exclusively by Englander's. Discover the grace, warmth and dignity in this furniture . . . a rich blend of Mediterranean flavors, exciting in its rhythm, pleasing in its proportions. Marvel at the wealth of meticulous details, the carved and molded cabinetry, the rich cherry woods finished in soft, clear fruitwood tones and the complementing softness of delicate antique whites and golds.

Surround yourself with Modavanti in the enchanting settings that Englander's has created especially for you. Surprise yourself with the pleasantly moderate prices. Just one of our new fall furniture fashions featuring the Mediterranean Renaissance. Our interior designers will be pleased to assist in your selections at no obligation. We'll look forward to seeing you.

**Englander's**

Open Mon., Thurs., Fri., Sat. 'til 9  
NORTHLAND EASTLAND BIRMINGHAM