

BRIDGE

in BIRMINGHAM

By **RUD MAYBAUM**
Southern Michigan
Bridge Association

At the recent tournament at Pittsburgh, the old bridge rule rang true: "When you lose or blow a board, it is not just that board but the next one also."

While playing with my wife in the mixed pair event, I opened the bidding—vulnerable, with one no trump. My wife placed the contract at six no trump, which always makes, even though we were off an ace and had to take a hook for the king of spades. Our opponents were angry as they were having a big game and knew that few would be in slam, and, those in slam would be in spades.

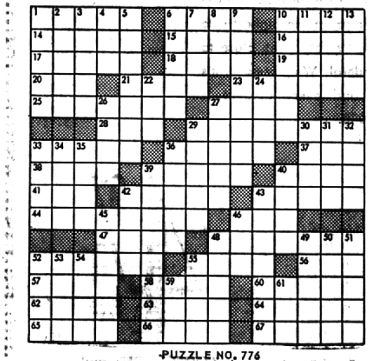
THE BOARD I wish to report today is the second board under the same opponents. He had already told me that he was a "poor loser" when the bidding opened and closed exactly like the first hand. Neither side vulnerable.

- NORTH** ♠ K Q 8 7 6 2
♥ A 7 4
♦ K
♣ K 10 4
- WEST** (Mrs. Sexton) ♠ 10 9
♥ 10 8 6
♦ 7 5
♣ 8 7 6 5 3 2
- EAST** (Mr. Sexton) ♠ A J 4
♥ 10 8 6
♦ J 10 9 6 4 2
♣ Q
- SOUTH** (Dealer) ♠ A 5 3
♥ K Q 5 3
♦ A Q 8 3
♣ A J 9

The bidding:
South West North East
1 NT Pass 3 Spades Pass
2 NT Pass 6 NT All Pass

Opening lead:
The queen of clubs fell on the opening lead that was won by South; a small spade led.
East played the Ace!
All returned a diamond!
The balance of the play was simple as East could not discard a spade and had to release one diamond on the long heart and two more on the clubs.

- ACROSS**
- Vapor
 - Large salience
 - Jogging pace
 - Many-headed monster
 - Rose
 - Emanation
 - Choose by ballot
 - Taut
 - Towship map
 - London's Big
 - Ruastan
 - Drives away
 - Arms magazine
 - Take a chance
 - Cop
 - North American
 - Light boat
 - Musical compositions
 - Riddle
 - Air Force
 - Glides
 - Irishman
 - At Gerahim
 - Rocky
 - Shit
 - Delegates
- DOWN**
- 81 Sistas
 - 48 Widespread
 - 52 Marring
 - 53 Redute
 - 57 Disappointed
 - 58 Love god
 - 60 Rule
 - 62 Withered
 - 63 Light crinson
 - 64 Scottish name
 - 65 Sow
 - 66 Plican
 - 67 Discernment
 - 11 Govern
 - 12 Teral
 - 13 Make lace
 - 14 Covered truck
 - 24 Time period
 - 26 Heroic poem
 - 27 Part of
 - 31 Pella pala
 - 32 Stearns
 - 33 Sp. fort commander
 - 34 Area measure
 - 35 Low US
 - 36 Blackthorn
 - 38 Fruit (pl.)
 - 40 Prodone of the grand
 - 42 Astonish
 - 43 Hiccup-takers
 - 45 The "U" of "U.S.A."
 - 46 Son of (prefix)
 - 48 Goes up
 - 49 Arrange in a row
 - 50 Abyslaina
 - 51 Taut
 - 52 Church service
 - 53 On the sheltered side
 - 54 Veary
 - 55 Greatest quantity
 - 59 Female deer
 - 61 Compass point



PUZZLE NO. 776

Self-Improvement, Modeling Taught By Will-O-Way

The natural look will be stressed in self-improvement and modeling courses opening at Will-O-Way Apprentice Theatre Monday, Sept. 30, for ten weeks.

Instructor is Emily Kay Murphy, model, fashion show director and commentator. She emphasizes to her students that dyed or teased hair and heavy makeup are "out" and the scrubbed look and simple hairstyles are "in."

She will conduct sample classes for prospective students Monday, Sept. 23, at the Apprentice Theatre at 766 W. Long Lake Road near Telegraph, Bloomfield Hills.

A SELF-Improvement course for teens will be held from 5 p.m. to 6 p.m. each Monday. In it, Miss Murphy will give tips on the carriage, grooming, hairstyling and wardrobe selection best suited to each of her students' individual needs.

Will-O-Way Director Celia Morrill Turner will help students to cultivate pleasing voices through lessons in speech and diction.

Self-improvement and modeling for adults will be taught from 7 to 8 p.m. each Monday. To help students toward that finished look of a professional model, the course includes individual coaching on posture, hairstyles, wardrobes, make-up, exercise, diet and grooming. It covers modeling techniques, such as walking and pivoting, along with speech and diction.

AN ADVANCED modeling course from 9 to 9:30 p.m. Mondays prepares students for actual participation in fashion shows. The course ends with a fashion show presented by the students. Trainees learn fashion direction, staging and commenting, as well as advanced modeling techniques.

Sample classes Sept. 23 will be held at the hours set for actual classes the following weeks. Further information about the course can be obtained by calling Will-O-Way Apprentice Theatre.

THE NEXT Regional Tournament will be in Fort Wayne, starting Oct. 3 and two weeks later there will be a regional at the Detroit Leland Hotel. Hope to report both of those tournaments.

Resident Is Named Instructor at LIT

An area resident is among five new instructors at Lawrence Institute of Technology. She is Mrs. Marjorie A. Pickering of 5108 Cold Spring, Birmingham. She will teach mathematics.

Mrs. Pickering received her master's degree in mathematics from State University and her master's from Wayne State. She taught at Okemos, Bloomfield Hills, Southfield and Pontiac before joining the Lawrence staff in 1960 as a part-time instructor.

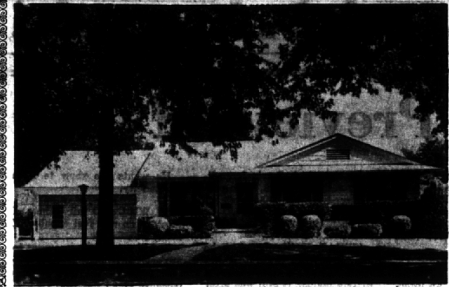
Raven Gallery Has New Show, Music Events

"The Finest Selected Contemporary Art" is a group exhibition currently on view at the Raven Gallery, 136 Brownell, Birmingham.

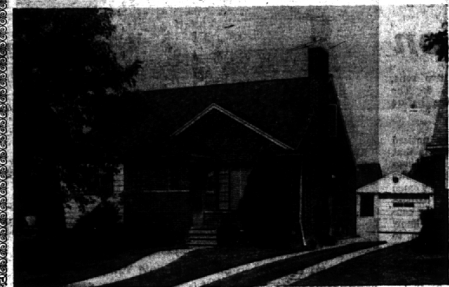
Included are works by Marc Chagall, George Bonall, William Meyerowitz, Sheldon Iden, Joseph Oliverio, Wallace Mead, Michael Curtin and Tamimi Shima. Gallery hours are 11 a.m. to 1 a.m. daily except Mondays.

HERB COHEN gallery director, also has announced three upcoming musical features—three nights of New Orleans Dixieland band concerts; six nights of "The Merry Widow" featuring Maria Roumel as lead voice; and six nights of "Carmen" featuring Alice Engstrom.

CITY or COUNTRY



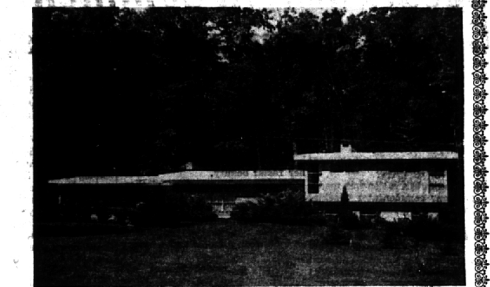
QUARTON SCHOOL and Seaholm High. Photogenic Ranch on Suffield—always one of the most desirable areas in the City. Large Living Room with fireplace—Separate Dining room—Kitchen and Breakfast with excellent built-ins—3 Bedrooms, 2½ Baths—Full Basement tiled and finished—1st floor Family room with pegged floor and fireplace—Large Screened Porch. Quality carpeting thruout and Draperies. Everything in excellent condition. Automotive Executive transferred out of town—MUST SELL. Priced at \$43,500.



YOUNG FAMILY Neighborhood of friendly people. Constructed of brick and aluminum siding for easy maintenance. Located for convenience and pleasant living. Living room with fireplace. Separate Dining room, 2 Bedrooms on first floor. Large 3rd Bedroom 18x11 on 2nd floor. Kitchen with eating space. Excellent closets including large cedar closet. FULL BASEMENT. New carpeting in Living room, Dining ell and Master Bedroom. FHA commitment applied for. Always a good area for mortgaging and resale. ONLY \$17,900.



BRAND NEW Farm Colonial in Beautiful Riverwood Subdivision in Franklin—an area of woods and winding roads and streams. 4 Bedrooms, 2½ Baths. Large Paneled Family room with fireplace. Formal Living room. Separate Dining room. Kitchen with Whirlpool appliances and Marsh cabinets. Slate foyer. Set on a very large site—264 foot frontage and an average of 215 feet depth. VALUE AT \$33,900.



GORGEOUS SITE—Contemporary Tri-Level with magnificent mature trees. 4 Bedrooms, 2 full Baths, 2 Lav. 35-foot Living-Dining room with fireplace. Large Family room with fireplace. Slate entry with travertine walls. Mud room between Kitchen and Garage. Kitchen with built-in refrigerator and oven and unique electric cooking center. Workshop off Garage. 1000 gallon buried oil tank. Thermopane windows thruout. Zonolite and zirafoam insulation. Outdoor Barbecue. Indirect Lighting thruout. PERFECT EXAMPLE of the BEST OF SUBURBIA. \$49,500.

OR
Wherever you want to live
SEE US—We are now
affiliated with the largest inter-continental referral system in the entire United States.
American Institute of Marketing
Reputable—Reliable—Responsible
Systems, Inc.

SNYDER KINNEY & BENNETT INC.
Realtors
32740 Franklin, Franklin MA 6-9600
239 S. Woodward, Birmingham MI 4-7000

Easy "One-Floor" Living

FRANKLIN VILLAGE—You'll find spaciousness the theme in this impressive brick ranch. 3 twin size bedrooms, leisure-time 20 foot family room, cheerful kitchen with large adjoining utility-mud room, and att. 2 car garage. LOOK! \$23,500.

WING LAKE—Just a step from your own private beach on Wing Lake, there's comfortable living inside and fun-filled hours out. 3 excellent bedrooms plus den or 4th bedroom. 2 sparkling tile baths, glass-wall living room overlooking the lake, and att. 2 car garage. CALL NOW! \$32,400.

COUNTRY STYLE—From the appearance of this sparkling brick and frame ranch set on a "ramping-room" size 1½ acre site, you'd never guess the low, low price. 3 nice bedrooms, relaxing family room adjoining a delightful built-in kitchen, and att. 2 car garage. Complete with carpets, drapes, refrigerator, washer, and dryer. JUST \$23,900.

HALL & YOUNG

REALTORS Inc.

"Twin offices" BIRMINGHAM 345 S. Woodward MI 6-7900 BLOOMFIELD 4174 W. Maple MI 6-5900

OPEN TILL 9 P.M.

Showcase of homes

"Showcase" features each home listed with Hall & Young in lighted photos and color slides. RESULT—more effective sales exposure for sellers and easier selection for buyers.

DEVELOPERS OF
Colonial Communities
CONCORD GREEN
EAST GREENWICH GREEN
WEST GREENWICH GREEN
METAMORA GREEN—
NOW—GEORGETOWN GREEN

Wm. J. PULTE, Inc.
MASTER BUILDERS
BIRMINGHAM
MI. 6-0105
PULTE • BUILT • MEANS • BETTER • BUILT