

HOMEMAKING

Seed Your Lawn in Fall For Top Turf by Spring

Is lawn seeding on your list of things to do this fall? An Illinois lawn and turf specialist reminds that early fall is the best time to establish and rejuvenate lawns... according to a report summarized by National Plant Food Institute. J. D. Butler, University of Illinois, says extra attention should be given the kind of seed, rate of seeding and preparation of seed-bed. Proper fertilization is another important factor.

As to seed varieties, Butler advises that Kentucky or Merion bluegrass and red fescue are good perennial grasses for most lawns in the Midwest. For temporary cover, redbud or ryegrass may be used.

THE LAWN AND TURF specialist has these suggestions for getting a new lawn off to a vigorous start:

1. Apply fertilizer . . . and, if needed, limestone . . . to the smoothed surface to be seeded. Spread evenly about 10 pounds of a good lawn fertilizer per one thousand square feet of lawn area, and work into soil to a six-inch depth.
2. Follow with another 10 pounds of fertilizer per one thousand square feet of lawn area, and work into soil to a six-inch depth.

Residents Win In Home Arts At State Fair

Five Birmingham-Bloomfield area residents have been announced as home art winners at the 1963 Michigan State Fair.

J. F. Bartlett, 487 Madison, Birmingham, received three awards: first prize in cherry jelly, third prize in plum preserves and fourth prize in grape jelly.

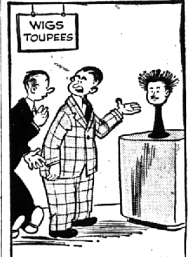
Theresa E. Fisher, 218 S. Glenary, Birmingham, also received three awards, first prize in any other cakes, second prize in plum preserves and fourth prize in any other miscellaneous canned relish.

William E. Pitney, 1020 Hazel, Birmingham, received third prize for ceramics, display of pots; Eleanor Peters, 4750 Dover Road, Birmingham, fourth prize for needlepoint handbags; and Sherry Mattson, 3791 Wabek Road, Bloomfield Hills, first prize for Swedish limps.

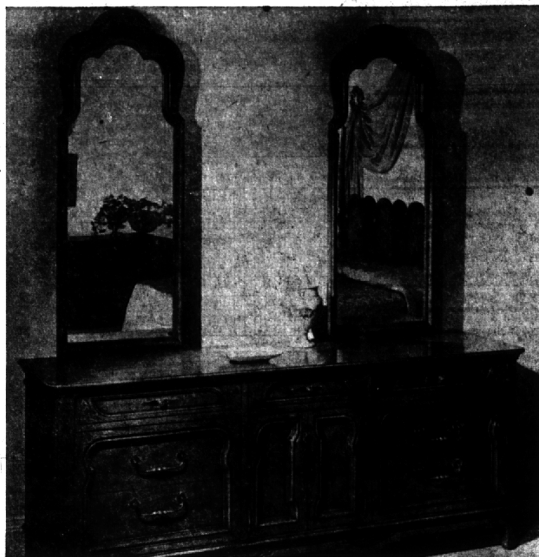
Shift Furniture

Moving furniture occasionally is good for carpets: A shift of a few inches relieves the pressure of heavy furniture on one spot. A more thorough re-arranging changes the "traffic pattern" in a room, thus distributing wear evenly over the floor.

Comedy Corner



"I just washed that one and I can't do a thing with it!"



French Provincial Meets Mahogany

Not often are French Provincial styles adapted in all mahogany as in this bedroom group. The wood is finished a soft golden brown, and the swirl figure of the veneer on

drawer and door fronts and capping the double arched mirrors was especially selected to add to the graceful lines.

Canned Tuna Plentiful For Quick, Easy Meals

Take advantage of the abundance of canned tuna. Stocks from last year's pack are more plentiful than usual, and many markets have been featuring canned tuna on special sales. The District Extension Agent, Mrs. Josephine Lawyer, Canned tuna is a natural for low cost meals. It is ready to eat and may be served in salad, sandwich and casserole combinations. Team tuna with seasonal vegetables or fruits.

Canned tuna comes in three pack styles. Solid pack tuna may be used as an attractive salad platter or broken into pieces for many hot or cold dishes. Chunk-style tuna is broken into bite-size pieces suitable for use in casseroles, salads, or other dishes.

THE SMALL bits of grated or flake tuna are ready for blending with spreads for use in sandwich

STRICTLY FRESH

Don't smoke in bed. The ashes that fall on the floor may be your own.

A wolf is a man who whistles while he lurks.



When asked what a legend is, a certain professor of English replied: "A lie that attains dignity with age."

People who cough never go to doctors; they go to concerts.

County Offers Training Class For Parents

Expectant parents who want to learn about childbirth and how to care for their baby can do so by taking Expectant Parent Classes offered by the Oakland County Department of Health.

Registrations will be accepted by phone until Sept. 17 by calling the Health Department offices in Birmingham.

These popular classes, which are attended by hundreds of expectant parents each year, will answer many questions such as: What does it mean if I am Rh negative and my husband is Rh positive? How can I tell when my baby is hungry — he cries for everything? How many diapers shall we buy?

THE SERIES consists of eight classes and covers topics which include mental health of the family unit; growth and development of the baby prior to and immediately after birth, labor and delivery; and feeding and bathing of the infant.

A conducted hospital tour is arranged for all parents.

The Oakland County Medical Society, various adult education departments and the Health Department jointly sponsor the classes which are taught by public health nurses.

Anyone who fails to register by phone may register in person Sept. 17 from 6:30 to 7:30 p.m. at the Health Department Office, 151 Martin St., Birmingham.

Classes will begin in Birmingham the week of Sept. 30.

Q. How can I freshen a pair of suede gloves?

A. An emery board is an effective tool for making suede gloves look fresh again. Use the fine-grained side and rub gently.

Q. How can I clean a good, glazed china?

A. Spread it on a flat surface, sponge quickly with lukewarm suds, then with clear, lukewarm water. If it is necessary to press it, do so on the wrong side with a lukewarm iron, or on the right side, using a slightly dampened pressing cloth.

Q. How can I join lace so that it will not be noticeable?

A. Try to patch the design over on the same design, carefully whipping one on the other. If neatly done, the place where the lace is joined will hardly be detectable. Do not make a French seam when joining lace.

Tempting Muffins Go on Outing at Summer's Close

Any fine weekend—to enjoy a final summer splurge—is all the excuse you need for a picnic. Picnics are fun when the food is good; make them better by preparing ahead. Ham and beef muffins, tanged with beer or ale are a neat meat trick as you can bake, chill and wrap them in clear plastic



HAM-BEEF MUFFINS SPARK MEAL

until you're ready to repack them in the tins for easy transport to the picnic site.

A flavorful macaroni salad is always good, and zesty beer or ale mixed with the dressing adds a gourmet touch.

PICNIC MEAT MUFFINS

- 2 eggs
- 3/4 cup beer or ale
- 2 1/2 cups soft bread crumbs
- 1/2 cup pickle relish
- 1/2 teaspoon salt
- 1/2 teaspoon pepper
- 1 1/2 teaspoons dry mustard
- 1/4 cup finely chopped onion
- 1 pound ground chuck
- 1 pound ground uncooked (cook-before-eating) ham

Beat eggs slightly in mixing bowl. Stir in beer. Add bread crumbs, pickle relish, seasonings and onion. Stir in meat and mix thoroughly.

Pack into 3-inch muffin pan cups and bake in moderate oven (350 F.) 45 minutes. Serve hot or chill loaves in muffin pans, then wrap individually for picnics.

YIELD: 18 3-inch meat muffins.

Note: Meat muffins may be baked in aluminum foil cups which go right to the picnic. Fit squares of double-thickness aluminum foil into muffin cups.

Cut squares large enough to cover meat. Fold foil back so it is flat on muffin pan during baking. Chill loaves, then cover with foil.

PICNIC MACARONI SALAD

- 1 package (8 ounces) elbow macaroni
- 1 cup mayonnaise or salad dressing
- 1/4 cup beer or ale
- 1/2 teaspoon Tabasco
- 1 teaspoon salt
- 2 tablespoons minced onion
- 3/4 cup diced celery
- 1/2 cup sliced radishes
- 1/2 cup diced green pepper

Cook macaroni according to directions on package; drain and cool. Combine mayonnaise, beer, tabasco, salt and minced onion. Add to macaroni.

Stir in celery, radishes and green pepper. Chill well. **YIELD:** 6 servings.



CALL US—YOU'LL BE GLAD YOU DID! We'd like you to see this great family home . . . 4 bedrooms, 2 baths and 2 lavs. Separate dining room, paneled recreation room and large screened porch. Excellent storage space. **NEW CARPETING.** Walk to QUARTON SCHOOL. \$36,900.



IT'S A FACT—You can be in this Beverly Hills home before school starts! Owner transferred and house is **VACANT.** 3 bedrooms, 1 1/2 baths and separate dining room. New modern kitchen with built-in dishwasher, disposal, oven and range. Large closets. Paneled recreation room. Fireplace in good sized living room. **GOOD VALUE.**



SEVEN ACRES — AND IN BIRMINGHAM SCHOOL DISTRICT. Magnificent family home with 4 bedrooms, 3 1/2 baths, large dining room and library. Sewing room on 2nd floor, recreation room and screened porch. Fire and burglar alarm system. **LOW taxes.** One of five areas you can **KEEP your own HORSES.** \$53,500.



FOR YOU WHO NEED four bedrooms and 2 1/2 baths. This Tri-level is walking distance to Harlan school and you may have **IMMEDIATE** possession. Fireplace in living room and family room. Carpeting and draperies included. Wonderful patio in back for outdoor living.



SOLID—SPACIOUS. Five bedrooms, 3 1/2 bathrooms. Library and large summer porch. Oversized lot enjoys huge trees and mature shrubs. Walk to public schools. St. Regis schools one mile. **IMMEDIATE POSSESSION.** \$32,500.



ACRE SITE—CITY OF BLOOMFIELD HILLS
5 bedrooms—4 baths
Includes master suites on first and second level. 3 car garage
—Circular driveway. Deep Vistas. \$84,500.



CLASSIC BEAUTY OF THE OLD and the MODERN COMFORT OF THE NEW is a rare combination found in this Bloomfield Hills home on four acres, near Christ Church. New ultra-deluxe kitchen with the finest qualities. 7 bedrooms, 7 baths and 2 lavs. Dining room, library and great family room with refreshment bar and refrigerator. Recreation room, solarium. Make it a point to see this exceptional home. **IT'S A SHOW-PLACE!** \$159,500.

Weir, Manuel & Snyder, Inc.

298 South Woodward
Birmingham, Michigan Realtors

Birmingham 644-6300
Phones: From Detroit 566-2323