

# Perform Adaptation By Area Resident

When the play "Chiara" goes on the boards this fall, it will be an opportunity for a limited number of metropolitan Detroit residents to see, perhaps for the first time, drama that adheres to theatre forms that were ancient when Pontius Pilate wondered if he would get that civil post in Judea. The play is the first production of the Performing Arts Workshop, Inc., a nonprofit Detroit company, founded by former Broadway actress Sara Lee Stadelman. But it will be the fifth of playwright and director Mrs. Stadelman, who in private life is the wife of Detroit architect Richard Byerson Stadelman.

works of Ruth Russell Davis, Detroit poet and newspaperwoman, who lives in Bloomfield Hills. The play deals with the life of St. Clare, patron saint of television and friend of St. Francis of Assisi, but it is far from a long-faced production. Each of the roles requires the ability to dance, sing and act — a concept that Mrs. Stadelman calls "dimensional acting". "Chiara" adheres to the ancient traditions of the theater in that it is the form of the "miracle" play — one that deals with the life of a saint — popular in the early days of Christendom. The emotional thread of the production is carried by some rare and ancient music which Mrs. Stadelman has acquired for the play.

IN ADDITION to being an actress, writer and director, Mrs. Stadelman is a student of drama. She points out that all theater has its roots in religion, both pagan and Christian. Drama, she reveals, was born in holy places. The first actors were priests and servants of the church. The earliest Christian drama had its beginnings as part of the liturgy of the church. As early as the fifth century, it was used on special occasions to illustrate the gospel narrative by living pictures accompanied by songs. In the early days of drama, the productions were classified into three types; mysteries, which dealt with scriptural events; miracles which concerned themselves with the legends of the saints; and morality plays which taught and illustrated the same truths allegorically, their characters being personified virtues or qualities.

"CHIARA" WAS adapted for the stage by Mrs. Stadelman from the

## Report

(Continued from 1-D)

indicating his early evaluation of Castro as a Communist and in documenting his repeated warnings to the State Department of the far greater danger to be feared from Castro than from Batista.

In fact, the book often takes on the color of a complete personal vindication. Perhaps Mr. Smith was the only right-thinking authority in the State Department at the time of his perception should be exposed for full view. But in this book, the prime purpose of analyzing the dynamic factors of the revolution becomes so embroiled with the author's efforts at self-exoneration that the value of the report is diluted.

IT IS DIFFICULT at this stage to relive the climate of 1963 when Castro came to power. Yet, at the time, the revolutionary forces were portrayed to the American public as the hope for Cuba, as the necessary succession to Batista's corrupt and totalitarian regime.

While it was known that Communist influences resided among the rebels, it was not believed that the dominant force was Communist. Under pressure of world opinion to support liberal regimes, it is understandable that "the fourth floor" in Castro a far more desirable alternative than in the unregenerate Batista.

WE NOW REALIZE the error of this policy. Mr. Smith realized it at the time.

His efforts to illuminate those times, and perhaps of equal importance, to indicate the vital role played by secondary officials in policy-making (and the relative ineptness of the ambassador's role vis-a-vis "the fourth floor"), provide valuable material.

We would only wish that this material were presented more objectively and comprehensively.

MRS. STADELMAN says that "Chiara" brings together many of the forms of drama as it developed into one production. It even has some of the flavor of the Roman spectacular, which was outlawed by the early Christian church. The entire cast is drawn from metropolitan Detroit talent directed by Mrs. Stadelman. "Chiara" will be presented in the Detroit Institute of Arts auditorium starting Nov. 20 through 24.

## Photography Club Appoints Officers For Coming Year

Officers of the Bloomfield Hills Camera Club for 1963-64 are Gene Newton, president; Charles Griffith, vice president; Mrs. Gene Newton, treasurer; and Mrs. Kenneth P. Smith, secretary.

The club has invited visitors and prospective members to attend its meetings at the Institute of Science at Cranbrook, Bloomfield Hills, the second and fourth Mondays of each month. First new meeting is at 8 p.m. Monday.

The club is interested in beginning photographers as well as experienced ones. Programs include material on movies, slides and black and white pictures.



**NEAR BLOOMFIELD VILLAGE**—Pictured is the rear of this delightful bi-level to give an idea of the spaciousness that makes it ideal for an active family and entertaining. There are 2 separate family rooms plus a beamed ceiling library, 3 fireplaces, 4 truly twin bedrooms, and 3 1/2 glistening tile baths. A large formal dining room, "work-planned" kitchen, and attached 2 car garage complete the picture. FEW LIKE THIS! \$56,500.



**YOU'LL FEEL AT HOME** in this comfortable and spacious Cape Cod located on a well landscaped 75 foot site. There are 3 bright bedrooms plus a convenient first floor family room that may be a fourth bedroom. Two full baths, separate dining room, screened porch, full basement, and attached 2 car garage. WEST BEVERLY! \$26,500.



**LAKE PRIVILEGES**—In a beautiful setting with a wooded picnic area, this immaculate 3 bedroom brick ranch offers year 'round fun at nearby Wing Lake. "Leisure hour" family room with fireplace, breeze-swept porch, 2 full baths, and att. 2 car garage. NICE! \$27,900.



**FIVE BEDROOMS**—On a high lot overlooking Birmingham Country Club, this superbly detailed Colonial beckons the large and growing family. Huge exposed recreation room with second fireplace, hobby room, porch, and att. 2 car garage. SPACIOUS! \$39,500.

# HALL & YOUNG

REALTORS

Inc.

"Twin offices"

**BIRMINGHAM**  
345 S. Woodward  
MI 6-7900

**BLOOMFIELD**  
4114 W. Maple  
MA 6-5900

OPEN TILL 9 P. M.

## Showcase of homes

"Showcase" features each home listed with Hall & Young in lighted photos and color slides. RESULT—more effective sales exposure for sellers and easier selection for buyers.

## SMALL HOME OR ESTATE — THE SERVICE IS THE SAME WHEN YOU LOOK WITH BROOCK

Our salespeople are only human. Sure, they love to sell hundred-thousand dollar homes, and they do. But, oddly enough, they'll work just as hard, or even harder, to find a suitable fifteen-thousand dollar home for a family of modest means.

To us, a customer is a customer; each one deserves our full courtesy and best service.

This attitude is certainly one reason why more than 70% of our business comes from referrals by satisfied clients. Call Broock today.

### Did you say, "Doll House?"



IF IT'S a "doll house" you want, you'd better grab this one now. They don't hardly build any more, you know. Two lovely bedrooms (with a possible third in the full basement), 1 1/2 baths, delightful recreation room, separate dining room. Magnificent new carpeting, Superb condition.

### Anyone for Bloomfield Village?



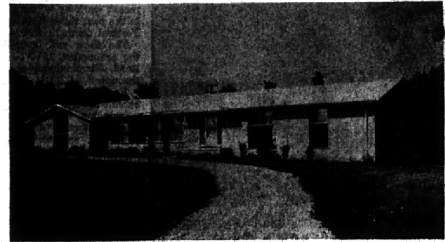
HERE'S AN eye-filling, chaste colonial on a gorgeous street. Meticulously kept, lovingly tended. 4 fine bedrooms, 2 1/2 baths, dining and family rooms, tremendous storage space. Back yard completely secluded, with a playhouse for children. Great kitchen. \$45,000.

### Christmas card setting



IT WOULD take some doing to find a more appealing setting for a gorgeous home like this one. Just 3 years old, everything has been done to make it sharp inside and out. 4 bedrooms, 3 1/2 baths, 2 fireplaces, patio with barbecue. Spacious family kitchen with all built-ins. Intercom radio. Wonderful condition.

### For those who think modern



THIS ALMOST new, contemporary bi-level ought to please the most demanding modernists. A BIG HOUSE—2113 sq. ft. on the upper level, 1988 below. Carpeting throughout, marble sills, 4 bedrooms, 2 full and 2 half baths, 1st floor laundry. Family room, 2 fireplaces. \$39,900.

Open Daily 9 to 9  
Saturday 9 to 5

MAX

# BROOCK

INC.

MI 4-6700

"Nationally Known Realtors"

300 S. Woodward

JO 4-6700

**ACROSS**

- 1 Drinks
- 5 Anasillo
- 10 Make over
- 14 Argument
- 15 Obstinate
- 16 Greedy
- 17 Mid-west
- 19 Fastidious
- 20 Meddlesome
- 21 Thrilling
- 22 Rap
- 28 Command
- 29 Ig home
- 30 Bahama
- 34 Thin
- 35 Speak
- 37 Etymology
- 38 Flannel
- 39 Disparages
- 41 Seven
- 42 Barn
- 43 Mountain
- 44 Yand
- 45 Kindly
- 47 Palm
- (2 words)

**DOWN**

- 1 Young
- 3 Turkish
- 4 Regiment
- 5 Football
- 6 Kick
- 7 Struck hard
- 8 Vivacious
- 9 Deer parlor
- 10 --- mode
- 11 A tear
- 12 Appointed
- 13 person
- 14 Stoves
- 11 Dead

**Answers to  
Puzzle Will  
Be Found  
on Page 6-D**

1	2	3	4	5	6	7	8	9	10	11	12	13
14			13								16	
17			18								19	
20						21	22					
23			24	25	26							
27	28	29			30				31	32	33	
34					35							
38	39	40										
41			43								44	
45						47	48	49				
52	53	54				51				50	50	59
60			61	62	63							
64			65						66			
67									69			

PUZZLE NO. 774