

### Commissioners Praise and Rib David F. Breck

Commissioner David F. Breck took some praise and some good-natured ribbing from his fellow commissioners Tuesday night. They heaped praise on Breck for improvements he had suggested in revising the City's brochure on refuse collection.

Said Breck, "I'm sorry I don't get approval like this of my other opinions."

HE HAS been known to disagree with his colleagues on some decisions, especially those pertaining to plans for the proposed parking lot in the block south of Shain Park.

"If they (his other opinions, that is) were as good as this (the brochure), you would," retorted Commissioner Ralph A. Main.

"Smile, would you?" said Breck. And amid the smiles, the commissioners approved the brochure unanimously.

## School Site Purchase Brews 'Tempest in a Storm Sewer'

By EVELINE OEN  
Staff Writer

The proverbial "tempest in a teapot" was transformed slightly, becoming a "tempest in a storm sewer" at Tuesday night's Birmingham Board of Education meeting.

A lengthy controversy concerned the adequacy of the specified size of storm and sanitary sewers provided for in a proposed compromise agreement for the purchase of about 30 acres on the southwest corner of Quanton and Covington roads for the possible future construction of a junior high school.

The board gave provisional approval for the signing of the agreement.

THE BLOOMFIELD Township site is being bought from Mr. and Mrs. Judson Bradway. Bradway is currently in the process of developing adjacent property. Part of the purchase compromise relates to easements for and the construction of adequate storm and sanitary sewers to meet the future needs of a school to be built on the site.

NORMAN WOLFE, assistant superintendent of buildings and

grounds, questioned the adequacy of the eight-inch sanitary and the eighteen-inch storm sewers provided for in the agreement.

The size of sewers on comparable school buildings is larger, he contended, later citing statistics for Berkshire, Derby and Groves schools.

BERKSHIRE HAS a 21" storm sewer and a 12" sanitary sewer; Derby has a 21" combination storm and sanitary sewer; Groves has a 12" sanitary sewer and a 21" storm sewer.

Wolfe wondered if the sewers on

the other schools were "over-sized" or "under-sized" on the proposed agreement "under-sized."

THE BOARD, considering the large cost of later enlarging the facilities if the eight-inch and eighteen-inch specifications were found inadequate, approved the signing of the compromise subject to an agreement between school architects (Peter Tarapata and Lynn Smith) and Bloomfield Township engineers (Hubbell, Roth & Clark, Inc.) on the basis of the discrepancy and a figure satisfactory to both on required sewer size.

THE "PRICE" of the compromise sale is \$280,430. Of that, \$248,500 is for the property proper and \$31,930 for easements, construction of connecting sewers and increased cost of construction of sewers and such facilities in the area to be built on the site. The probable future needs of the proposed school site. Dealing for construction of the facilities is Dec. 31, 1964.

NEGOTIATIONS FOR the purchase of the property began soon after a building survey (reported to the board in June, 1961) indicated a future need for a junior high in the vicinity. The Bradway property was the only suitable available land in the area, a school official explained.

The Bradways did not wish to sell, he said, and condemnation proceedings were authorized by the board in August, 1962.

THE CASE was actually in court for a couple of days, the official said, "but nothing conclusive was settled there. Bradway decided he wanted to settle the case out of court."

The proposed compromise, agreed to with reservation by the board Tuesday night, is the result of such negotiation and is still subject to final agreement by Bradway.

### Cranbrook

(Continued from 1-A)

expansion of library facilities and book collections, new language instruction facilities, construction of additional faculty housing and various renovations of existing areas.

The capital gifts program is scheduled to begin in 1964 with a three-year goal of \$3,000,000; but selective solicitation will be conducted prior to the official opening of the campaign.

According to available information, the only recent secondary-school gift significantly larger than the Cranbrook Foundation award to Cranbrook School was the \$3,600,000 grant to Culver Military Academy by the Eugene Eppley Foundation.

FOUNDED IN 1926 by Mr. and Mrs. George G. Booth, who also established five related educational, cultural and religious institutions, Cranbrook School annually enrolls 200 boarding students and 180 day students in grades seven through twelve.

The school occupies a 90-acre campus. Its original buildings were designed by the noted architect Eilii Saarinen.

### Atlantis

(Continued from 1-A)

tween The Community House, across the street from 228 Townsend, and the Citizens Action Committee.

ROBERTS ADDED that he sensed "some lack of communication" here in spite of the group's purpose.

"We are a highly organized community, starting with our children," he said. "They are our competitive pawns. I hope this group serves a need and will not be a competing organization."

Bawden replied that the Society hopes to bring the various organizations together.

ASKED BY The Eccentric for his opinion of the Society's plan, Community House Executive Director Robert A. Bogan, Jr., issued this statement:

"The Atlantis Society proposal coincides with the long-range expansion plans of The Community House in regards to establishing office and additional meeting space for area clubs and nonprofit organizations.

"It is our intention, as part of our projected building plan announced last spring, to expand our space and staff services in order to add to the number of community organizations we are presently serving.

"The Atlantis plan may have merit as an interim arrangement until The Community House facilities are completed."

### B'ham Students To Do Exercises On TV Program

The Birmingham Public School's six-week summer course in physical fitness will be featured on the "Junior Sports Club" program from 10 to 10:30 a.m. Saturday on WXYZ-TV, Channel 7.

A highlight of the show will be an exercise routine performed to the music of "South Pacific."

LISA GEOVJIAN, a student, did the choreography for the routine, which was prepared by the entire girls' Swedish Gymnastic unit. Mrs. Bonnie Sweetman taught the basic fundamentals for developing these exercise routines.

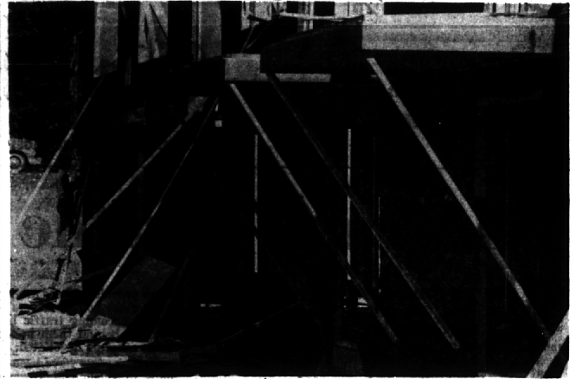
Other segments of the television show will present speedball, weight and isometric training, plus the entire 194 students from the physical fitness course performing a calisthenics routine to Meredith Wilson's tune, "Chicken Fat."

### Professional Zoning Gets Tentative Okay In Lathrup Village

LATHRUP-Receiving no objections at a public hearing, the city council Tuesday night approved for first reading an amendment to the zoning ordinance to allow for transitional professional zoning in a two-block area on 12 Mills Road.

If adopted, the measure will facilitate the rezoning from one-family residential to transitional professional (T. P. 2) from Guy Part to Santa Barbara on 12 Mills.

The T. P. 2 zone was originally part of a larger multiple dwelling ordinance that was defeated by the council last month.



THE LARGEST multiple dwelling development under construction in Bloomfield Township is the one at Woodward and Hickory Grove, which will contain 76 units and cost \$600,000. The site is being developed by the Alco Construction Co. of Lansing.

### Fire Interrupts Construction of Lathrup Home

A flash fire in a new Lathrup Village home Monday resulted in damages that builders estimate will cost \$100.

The home, located at 17137 Sherfield, is still under construction by builder Norman Steel.

Lathrup firemen said the fire originated behind the plumbing in an upstairs bathroom, where pipes are fitted together in an elbow.

### Building

(Continued from 1-A)

compared to 36 for the same period last year.

On the commercial level, Beverly will receive two banks and a seven-store addition at the 13 Mile Southfield shopping center, valued at \$350,000.

Residential construction continues to flourish in West Bloomfield Township with building and alterations totaling \$737,972 for the first six months of 1963.

LARGEST commercial construction during this period includes a \$50,000 furniture store on Orchard Lake, near Birchland Drive, and \$36,000 of improvements at Pine Lake Country Club.

Bloomfield Hills reports a permit for \$50,000 for a five-unit multiple dwelling at 1825 Stonycroft.

ENJOY DANCE CLASSES WITH NO CONTRACTS JACK BARNES 2519 W. Maple MI. 7-1222 LI. 7-2833

## HANSEL 'N' GRETEL

### Classroom Classics

FOR fit or fashion... our new Fall selection of Fleet Air shoes is at the head of its class. Bring your children in season while our selection is still complete.



## HANSEL 'N' GRETEL SHOPPE

135 S. Woodward Ave., Birmingham MI 6-4722 Open Thurs. and Fri. night until 9 P.M.



### GIBRALTAR BLACKTOP DRIVEWAY SEALER

- DURABLE SMOOTH BLACK FINISH
- WILL NOT TRACK IN SUMMER
- NO CRACKING IN WINTER
- GAS AND OIL RESISTANT

Winterize your ASPHALT DRIVE now! Gives new life and beauty to your driveway while sealing all cracks, protecting against water penetration, freezing and thawing. By following the directions on each 5 gallon can, Gibraltar Driveway Sealer will provide lasting life and protection for many years. Easy to apply.

\$6.95

DRIVEWAY SEALER—5 Gallon Can

## BIRMINGHAM LUMBER & SUPPLY CO.

1025 HAYNES STR. MI 4-3636

Between Adams & Hunter—5 Bks. S. of Maple (E. of Greenfield's)  
Hours: Mon. Thru Fri. 7:30 to 5:30 P.M.—Sat. 7:30 to 4 P.M.

### The Birmingham Eccentric

Published weekly in The Eccentric Building, 1225 Bowers St., by The Birmingham Eccentric, Inc., 4-1100. Address all mail (subscriptions, change of address, Post Office) to 1225 Bowers St., Birmingham, Mich.

Paul H. Averill, Publisher  
Henry H. Hogue, Jr., Editor

Second-class Postage Paid at Birmingham, Mich.  
Subscription Rates (in Oakland County)  
One Year (12 Issues) \$5.00  
Six Months (6 Issues) \$3.00  
Three Months (3 Issues) \$1.50  
One Year (12 Issues) \$8.00  
Six Months (6 Issues) \$5.00

In a class with Mercedes-Benz, Rolls Royce and Cadillac...

So luxurious... yet only \$12.95 sq. yd.

Trystear

If you can refrain from boasting about this fabulous broadloom buy, no one will guess its tiny price. A really sumptuous look, with the Kara-loc stamina that insures years of durability. Lustrous plush pile wool in 18 sparkling skein-dyed colors.

Call for Home Service... LI 8-2600 or JO 6-9856

818 NORTH WOODWARD AVENUE AT 1 1/2 MILE ROAD... OPEN EVERY EVENING TILL 9... OUR DECORATORS ARE AT YOUR SERVICE, NO OBLIGATION.