

Cultural Events

Aug. 29

BLOOMFIELD THEATER—"Summer Magic," starring Hayley Mills, Burl Ives and Dorothy McGuire, and "Great Guns of Texas," starring James Mitchum, Jody McCrea and Chill Wills.

BIRMINGHAM THEATER—"Savage Sam," starring Brian Keith and Tommy Kirk, and "Yellowstone Cubs," featurette.

CRANBROOK GALLERIES—Annual summer show of work by students of the Cranbrook Academy of Art, will run through mid-September. Also, in the Young People's Art Center Galleries, annual student summer show; will run through mid-September. Gallery hours are 2 to 5 p.m. daily except Mondays and major holidays. Admission charge.

INSTITUTE OF SCIENCE—Exhibit of Pre-Historic Mexican civilization and Pre-Columbian architecture at the Cranbrook Institute of Science. Hours are 10 a.m. to 5 p.m. Monday through Friday and 2 to 5 p.m. on weekends. Admission charge. The exhibit will continue through Sept. 8.

Aug. 30

RAVEN GALLERY—"The Topsiders" will entertain at the Raven Gallery, 136 Brownell, Birmingham, beginning at 9 p.m. Admission charge.

BIRMINGHAM YMCA—"The House," by Charles Bigelow, an original reading by a group at 8 p.m. Admission charge.

Aug. 31

RAVEN GALLERY—"The Topsiders" will entertain at the Raven Gallery, 136 Brownell, Birmingham, beginning at 9 p.m. Admission charge.

Sept. 1

CARILLON CONCERT—Guest soloist Prof. Percival Price will give a recital on the Christ Church Cranbrook carillon at 4 p.m. The concert, which is open to the public, may be heard from the grounds of the church on Lone Pine Road in Bloomfield Hills.

RAVEN GALLERY—"Top Topsiders" will entertain at the Raven Gallery, 136 Brownell, Birmingham, beginning at 9 p.m. Admission charge.

Sept. 3

JACOBSON'S—Opening of three-man show of primitive oil paintings by Margaret Neiman, Frederick Papadoff and Elizabeth Thompson at Fine Arts in Jacobsons (home decorating store), Birmingham. The show will run through Sat. Sept. 14. Gallery hours are 9:30 a.m. to 5:30 p.m. Monday through Saturday and 9:30 a.m. to 9 p.m. Thursday.

Sept. 4

FRANKLIN JUNIOR PLAYERS—The Franklin Junior Players will perform "The Silver Whistle" in a tent on the Franklin Village Green at 8:30 p.m. Admission charge. Open to the public.

Sept. 5

FRANKLIN JUNIOR PLAYERS—The Franklin Junior Players will perform "The Silver Whistle" in a tent on the Franklin Village Green at 8:30 p.m. Admission charge. Open to the public.

Sept. 6

FRANKLIN JUNIOR PLAYERS—The Franklin Junior Players will perform "The Silver Whistle" in a tent on the Franklin Village Green at 8:30 p.m. Admission charge. Open to the public.

Sept. 7

FRANKLIN JUNIOR PLAYERS—The Franklin Junior Players will perform "The Silver Whistle" in a tent on the Franklin Village Green at 8:30 p.m. Admission charge. Open to the public.

FRANKLIN JUNIOR PLAYERS—The Franklin Junior Players will perform "The Silver Whistle" in a tent on the Franklin Village Green at 8:30 p.m. Admission charge. Open to the public.

FRANKLIN JUNIOR PLAYERS—The Franklin Junior Players will perform "The Silver Whistle" in a tent on the Franklin Village Green at 8:30 p.m. Admission charge. Open to the public.

FRANKLIN JUNIOR PLAYERS—The Franklin Junior Players will perform "The Silver Whistle" in a tent on the Franklin Village Green at 8:30 p.m. Admission charge. Open to the public.

FRANKLIN JUNIOR PLAYERS—The Franklin Junior Players will perform "The Silver Whistle" in a tent on the Franklin Village Green at 8:30 p.m. Admission charge. Open to the public.

FRANKLIN JUNIOR PLAYERS—The Franklin Junior Players will perform "The Silver Whistle" in a tent on the Franklin Village Green at 8:30 p.m. Admission charge. Open to the public.

FRANKLIN JUNIOR PLAYERS—The Franklin Junior Players will perform "The Silver Whistle" in a tent on the Franklin Village Green at 8:30 p.m. Admission charge. Open to the public.

FRANKLIN JUNIOR PLAYERS—The Franklin Junior Players will perform "The Silver Whistle" in a tent on the Franklin Village Green at 8:30 p.m. Admission charge. Open to the public.

FRANKLIN JUNIOR PLAYERS—The Franklin Junior Players will perform "The Silver Whistle" in a tent on the Franklin Village Green at 8:30 p.m. Admission charge. Open to the public.

FRANKLIN JUNIOR PLAYERS—The Franklin Junior Players will perform "The Silver Whistle" in a tent on the Franklin Village Green at 8:30 p.m. Admission charge. Open to the public.

FRANKLIN JUNIOR PLAYERS—The Franklin Junior Players will perform "The Silver Whistle" in a tent on the Franklin Village Green at 8:30 p.m. Admission charge. Open to the public.

FRANKLIN JUNIOR PLAYERS—The Franklin Junior Players will perform "The Silver Whistle" in a tent on the Franklin Village Green at 8:30 p.m. Admission charge. Open to the public.

FRANKLIN JUNIOR PLAYERS—The Franklin Junior Players will perform "The Silver Whistle" in a tent on the Franklin Village Green at 8:30 p.m. Admission charge. Open to the public.

FRANKLIN JUNIOR PLAYERS—The Franklin Junior Players will perform "The Silver Whistle" in a tent on the Franklin Village Green at 8:30 p.m. Admission charge. Open to the public.

FRANKLIN JUNIOR PLAYERS—The Franklin Junior Players will perform "The Silver Whistle" in a tent on the Franklin Village Green at 8:30 p.m. Admission charge. Open to the public.

FRANKLIN JUNIOR PLAYERS—The Franklin Junior Players will perform "The Silver Whistle" in a tent on the Franklin Village Green at 8:30 p.m. Admission charge. Open to the public.

FRANKLIN JUNIOR PLAYERS—The Franklin Junior Players will perform "The Silver Whistle" in a tent on the Franklin Village Green at 8:30 p.m. Admission charge. Open to the public.

FRANKLIN JUNIOR PLAYERS—The Franklin Junior Players will perform "The Silver Whistle" in a tent on the Franklin Village Green at 8:30 p.m. Admission charge. Open to the public.

FRANKLIN JUNIOR PLAYERS—The Franklin Junior Players will perform "The Silver Whistle" in a tent on the Franklin Village Green at 8:30 p.m. Admission charge. Open to the public.

FRANKLIN JUNIOR PLAYERS—The Franklin Junior Players will perform "The Silver Whistle" in a tent on the Franklin Village Green at 8:30 p.m. Admission charge. Open to the public.

FRANKLIN JUNIOR PLAYERS—The Franklin Junior Players will perform "The Silver Whistle" in a tent on the Franklin Village Green at 8:30 p.m. Admission charge. Open to the public.

FRANKLIN JUNIOR PLAYERS—The Franklin Junior Players will perform "The Silver Whistle" in a tent on the Franklin Village Green at 8:30 p.m. Admission charge. Open to the public.

FRANKLIN JUNIOR PLAYERS—The Franklin Junior Players will perform "The Silver Whistle" in a tent on the Franklin Village Green at 8:30 p.m. Admission charge. Open to the public.

FRANKLIN JUNIOR PLAYERS—The Franklin Junior Players will perform "The Silver Whistle" in a tent on the Franklin Village Green at 8:30 p.m. Admission charge. Open to the public.

FRANKLIN JUNIOR PLAYERS—The Franklin Junior Players will perform "The Silver Whistle" in a tent on the Franklin Village Green at 8:30 p.m. Admission charge. Open to the public.

FRANKLIN JUNIOR PLAYERS—The Franklin Junior Players will perform "The Silver Whistle" in a tent on the Franklin Village Green at 8:30 p.m. Admission charge. Open to the public.

FRANKLIN JUNIOR PLAYERS—The Franklin Junior Players will perform "The Silver Whistle" in a tent on the Franklin Village Green at 8:30 p.m. Admission charge. Open to the public.

FRANKLIN JUNIOR PLAYERS—The Franklin Junior Players will perform "The Silver Whistle" in a tent on the Franklin Village Green at 8:30 p.m. Admission charge. Open to the public.

FRANKLIN JUNIOR PLAYERS—The Franklin Junior Players will perform "The Silver Whistle" in a tent on the Franklin Village Green at 8:30 p.m. Admission charge. Open to the public.

FRANKLIN JUNIOR PLAYERS—The Franklin Junior Players will perform "The Silver Whistle" in a tent on the Franklin Village Green at 8:30 p.m. Admission charge. Open to the public.

FRANKLIN JUNIOR PLAYERS—The Franklin Junior Players will perform "The Silver Whistle" in a tent on the Franklin Village Green at 8:30 p.m. Admission charge. Open to the public.

FRANKLIN JUNIOR PLAYERS—The Franklin Junior Players will perform "The Silver Whistle" in a tent on the Franklin Village Green at 8:30 p.m. Admission charge. Open to the public.

FRANKLIN JUNIOR PLAYERS—The Franklin Junior Players will perform "The Silver Whistle" in a tent on the Franklin Village Green at 8:30 p.m. Admission charge. Open to the public.

FRANKLIN JUNIOR PLAYERS—The Franklin Junior Players will perform "The Silver Whistle" in a tent on the Franklin Village Green at 8:30 p.m. Admission charge. Open to the public.

FRANKLIN JUNIOR PLAYERS—The Franklin Junior Players will perform "The Silver Whistle" in a tent on the Franklin Village Green at 8:30 p.m. Admission charge. Open to the public.

FRANKLIN JUNIOR PLAYERS—The Franklin Junior Players will perform "The Silver Whistle" in a tent on the Franklin Village Green at 8:30 p.m. Admission charge. Open to the public.

FRANKLIN JUNIOR PLAYERS—The Franklin Junior Players will perform "The Silver Whistle" in a tent on the Franklin Village Green at 8:30 p.m. Admission charge. Open to the public.

Summer's End Is at Blackberry Patch

By Lydia King Frehse
Special Writer for The Birmingham Eccentric

WALLOON LAKE—It is not summer's end in any year until we have climbed the hill to the Blackberry Patch.

And when I write "climb," I also mean "walk." For it is only on foot that one can stop every now and then to turn and to enjoy the view of the lake; grey-blue, dark blue or aquamarine of water with a shoreline that is ever-changing as one nears the top of the hill.

The blackberry patch is a remnant of some pioneer's dream in the days when cheap land lured many a farmer from Ohio and Indiana to seek his fortune in Michigan.

A few old apple trees, a moss rose near a white pine, some broken timbers; these mark the site of what was once an orchard, a house and a barn.

THE BLACKBERRY patch bordered with catnip and peppermint may well represent an escape from a once-tended garden. Now in a good season, vacationers beat a path to the hilltop.

And there are others whom I frequently meet there, among them the snowshoe rabbit, also called the varying hare or the northern jackrabbit.

Now this creature is not a rabbit at all but should rightfully be called a hare. These animals represent two separate groups, each with its own well-defined species.

Hares never make burrows but live and bring forth their young in nests on the ground. They are long-legged, long-eared and swift-footed with hind legs considerably longer than their forelegs.

RABBITS OFTEN live in burrows, bear and tend their young in

a well-hidden depression in the ground, have short legs and ears and cannot maintain much speed for distances. The young of hares are almost self-sufficient when born while those of rabbits are born naked and blind.

The "varying hare" changes his coat twice a year by shedding, hence this name. "Snowshoe rabbit" comes from the shape of the tracks made by his large white feet.

His summer coat of greyish-brown renders him almost invisible against the dead grass and briars of the blackberry patch, and his warm white winter overcoat is at one with the deep snow.

KEEN VISION coupled with eyes placed well to the sides of his head enable the hare to detect a movement coming from a wide range of directions. His acute sense of smell protects him from predators and helps him to locate a fresh food supply.

Stiff and sensitive whiskers growing from the side of the hare's nose correspond to the width of his body and help him to estimate the possibility of passing through an opening for shelter or defense.

With his big ears he can detect sounds that man cannot hear, and the nerves of his feet are so sensitive that they pick up vibrations through the ground, thus arousing him to danger even if he is asleep.

84 YEARS EXPERIENCE
RESIDENTIAL AND COMMERCIAL ROOFERS
Getters & Downspouts
J. J. Candler
ROOFING COMPANY
551 E. VERNOR HWY., DET.
WO 2-0512

Birmingham Insurance Agency

114 S. Woodward

Representing:

AMERICAN INSURANCE CO.
EMPLOYERS GROUP
HOME INS. OF NEW YORK
NATIONAL UNION
OHIO CASUALTY CO.
TRAVELERS
ST. PAUL FIRE AND MARINE

MI 4-2422

"After We Sell We Serve"



OSCAR P. PETERSON
BRUCE F. RANDALL
FRANK W. WHITSON

the Indian in his northern haunts makes many a meal of his tender flesh.

Early spring finds the hare lean and hungry, but it also brings with it a new food supply. In April he mates, and in 35 days the first young are born. His unusual fecundity compensates for his vulnerability, and the last of the mother's several litters may arrive as late as October.

OUR NORTHERN hare is a creature of deep forests, lonely meadows and areas of heavy cover like swamps and blackberry patches. When land uses change, his place is often taken by the more defenseless cotton-tail rabbit.

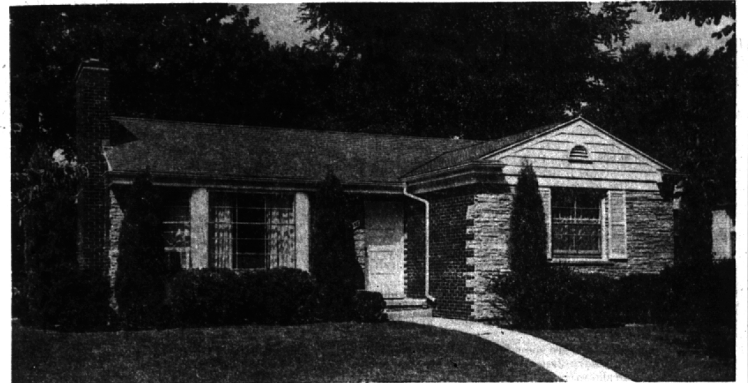
Both of these animals, relatively abundant and widespread, are important links in the food chain of wild life since they are easy prey for a long list of carnivores.

Square Dance Line Features Resident

Karen Werp, 10, daughter of Mr. and Mrs. Victor Werp, 2726 Brady Drive, Bloomfield Hills, will be one of nine girls featured in the Carol Kimmel Square Dance Line appearing at 8:30 p.m. Saturday in the Music Shell at the Michigan State Fairgrounds, Detroit.

Sixteen acts will be presented by the Carol Kimmel Dance Studio, Royal Oak, immediately preceding the Les Algart-Dinah Washington show at the 1968 State Fair. The numbers will consist of tap ballet, baton and modern jazz ensembles.

Make a list of those "don't needs" today, Dial MI 4-1100 and a Classi Lassi will help you.



FIREPLACE AND EVERYTHING!

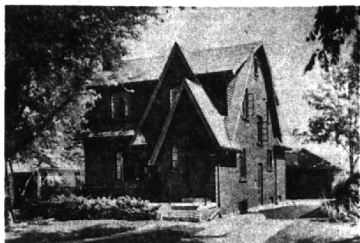
Very well maintained, 3 bedroom Beverly Hills Ranch. Top location for both public and parochial schools. Attractive living room—Large paneled and screened porch. F.H.A. \$20,150—Priced right at only \$19,900.

DIAL YOUR
WAY TO . . .

Chamberlain Co.

Realtors

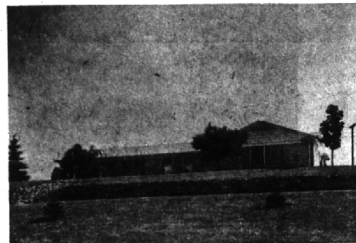
MI 6-6000



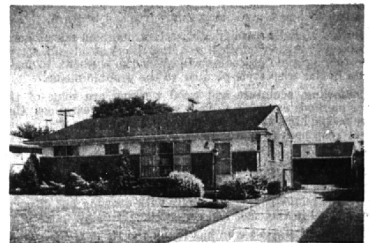
OWNER WILL SACRIFICE FOR QUICK SALE. He's been transferred and you may have immediate possession. In beautiful Beverly Hills, this older home has three bedrooms, 1½ baths, separate dining room, 23 foot family room and recreation room. FHA available—low taxes and only \$18,500.



A LITTLE CUTIE! Newly painted three bedroom ranch with attached garage and large utility room on a manicured lot. Asking \$16,900 and giving quick possession.



CALL US—YOU'LL BE GLAD YOU DID! It's a pleasure to show this immaculate home. 3 bedrooms, 2½ baths. Separate dining room and huge family room. Large screened and glassed porch. Kitchen you'll love. Carpeting and draperies. Many extras to surprise you. DON'T MISS IT! \$32,500.



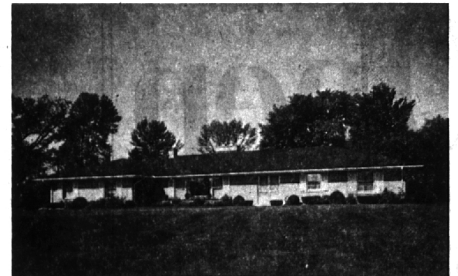
ALL THE INGREDIENTS FOR HAPPINESS. Wonderful neighborhood for young people. Immaculate—Immediate possession. Walk to school. 3 bedrooms, 1½ baths, large kitchen, beautiful paneled recreation room with refreshment bar, screened porch. Fenced yard on a court street. \$21,900.



YES, WE HAVE A FIVE BEDROOM HOUSE, and it's near the Kirk. Master suite with dressing room. 4½ bathrooms. Separate dining room with B-B-Q fireplace. Library or family room. Recreation room in BASEMENT. Ultra deluxe kitchen with built-in refrigerator, freezer, oven and range. If you hurry, you could be in before school starts!



THREE GOOD REASONS for seeing this outstanding home: (1) Near Quanton School. (2) Transfer price. (3) Spacious rooms. 5 bedrooms, 3½ baths, separate dining room, family room with fireplace, carpeting, draperies and intercom system. AIR-CONDITIONING in kitchen and family room. Circular drive.



GREAT NEIGHBORHOOD: Court street in Bloomfield Hills nearby Cranbrook. LOTS OF ROOM: 18 foot separate dining room, 30 foot family room, huge kitchen with built-ins. Three twin-sized bedrooms, 2½ baths (deluxe master bath is 15 x 10). Fully carpeted. BEAUTIFUL INSIDE AND OUT!

Weir, Manuel & Snyder, Inc.

298 South Woodward
Birmingham, Michigan Realtors

Birmingham 644-6300
Phones: From Detroit 566-2323