

French Town Uses Roman Arena

EDITOR'S NOTE: This is another in a series of dispatches to The Eccentric from Donald Dennis and his wife Margaret, as they make a seven-month trip around the world. Dennis teaches art at Bloomfield Hills High School; his wife is a visiting teacher in the same school system. The following letter was written from Paris.

One final afternoon of sun and sand at Lloret de Mar, along the Costa Brava, and we were on our way back into Central Europe.

This time we decided to move with the Roman Legions up the Rhone River Valley and then to Paris.

The crown jewel of European cities beckons to all tourists and we were anxious to mingle with the summertime populace.

AGAIN the advantage of driving on our own proved itself as we wandered northward. Thanks to Franco's excellent road system, the adventurous spirit can find hundreds of small out-of-the-way places to satisfy any mood.

The tiny fishing village of Sete is one of those typical to Southern France, and we stopped to photograph, wander the streets and make a mental note to return when we could stay longer.

Here along the Mediterranean is a strip of sandy beach, about 20 miles long, that can boast about not having crowded conditions, even at the peak of the season.

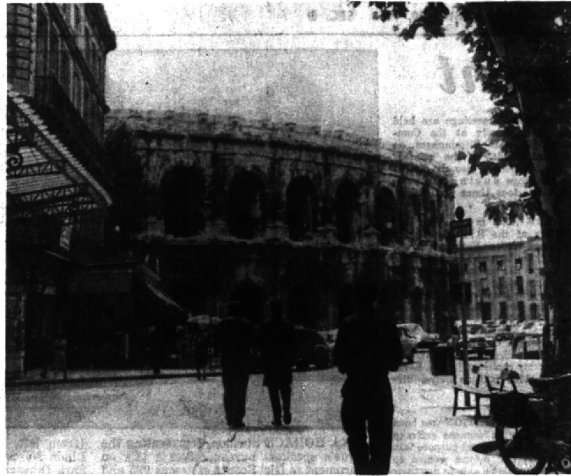
THE VILLAGE itself has all of the flavor of a fishing village, resort town and commercial port tied up in one small easy-to-find package, with an atmosphere of relaxation that was most rewarding.

Nimes was our next overnight stay, and this was our introduction to the most perfect remains of the civilization of Rome yet encountered by us.

Inside of the walls of the medieval city we visited the Temple of Diana, the Temple of Venus (a beautiful example of classic Corinthian) and the Roman Amphitheater that is still in use by the townspeople for an arena.

THE GARDEN of La Fontaine with its terraces, stone steps and statues appears today in much the same way as it did in the days of Caesar Augustus.

The streets of Nimes were explored with us by two welcome faces from home. Mr. and Mrs. Kenneth Ollis, teachers in the Bloomfield Hills schools, are spending a summer touring Europe and they were as eager to visit with us as we were with them.



FOLLOWING the route of Roman Legions, a visit was made to the medieval city, Nimes, France. Remains of the civilization arena.

of Rome include Amphitheater in background, still used by the townspeople for an arena.

Paris itself almost defies description. Possibly this fact is because, like New York City, it is a place of constant activity in extremely intricate and diverse patterns.

ALL THE WAY up the Rhone to Lyons, we drove through towns and villages that are full of examples of the Roman public life as well as the medieval.

Small castles; moats; narrow, twisting, cobblestone streets; walls

and cathedrals were spread along the way.

Upon leaving the Rhone, we picked up the Seine River and proceeded to follow its valley until reaching Fontainebleau and the outskirts of Paris.

The Baroque period reached its climax here, and the decorative elements of this style dominate the scene.

The lure of Paris has always been strong with aspiring artists and this fact may partly account for its vibrant, gay, carefree manner.

Our visit of four days has been centered near the Sorbonne area of the Left Bank. It is from here that we are revisiting and exploring the city.

BROWSING through the bookstores, relaxing at sidewalk cafes, visiting the museums and strolling through the parks is an excellent way to become acquainted with the lure of the city.

For night people, Paris begins again after dark and continues until dawn.

The Lido still boasts the biggest and best nightclub act in Europe—and for those many small attractions, try the Moulin Rouge area for modern variety, the Bastille area for traditional French enter-

Bookcase

(Continued from 1-D)
flight into the sphere which she had renounced with her marriage.

THIS DONE with, Elizabeth sets to work to forge a new pattern of life, that of wife and hostess of a popular professor with ambitions to be president of his school.

But rather than too little and too late in her efforts to help her husband achieve his goal, Elizabeth is to avoid too premature. The result is an unexpected reaction among the trustees.

Besides foraging around in the best bedrooms, O'Hara, in his uncouth Marquand manner, portrays an interesting segment of America—the small college campus with its ambitions, jealousies and frustrations.

The novel is admirably constructed, the prose lively and the dialogue masterly.

All in all, "Elizabeth Appleton" is one of O'Hara's better novels among his many good ones.

Teens

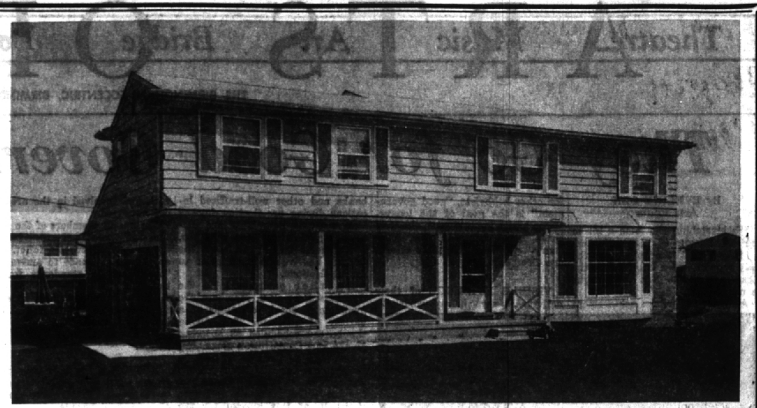
(Continued from 1-D)

Bower plays the Bishop, Dick Wozniak is Father Shay; Bill Adams, Mr. Beach; Tom Hampson, Mr. Eddy; and Don McIntosh appears briefly as the policeman.

On Sept. 4 and 8, "The Bishop's Mantle" will be performed with Ron Krause as Hastings, Bob DeLonge as H. Laurens, Jane Schaefer as Miss Mowbray and J. D. Bartleson as D. Laurens.

Key Heidemann plays Lex McCooly; Mary Gidley, Heddie Breckenridge; Judy Rosello, Mrs. Warner Reed; Jean Rosello, Mary McComb; Tom Taskey, Jay V. Dunn; Pam Sivier, Maudie Dunn; Jim Bunnell, Mr. Alford; and Betsie Bates, Samantha Adams.

Prompters are Hiedi Vogler for "Silver Whistle" and Cecily Kerr for "The Bishop's Mantle." The Holderness sisters, Pat, Charlene, Marlene and Carol, are doing "Whistle" props, while cast members of the "Bishop's" show are sort of doing their own.

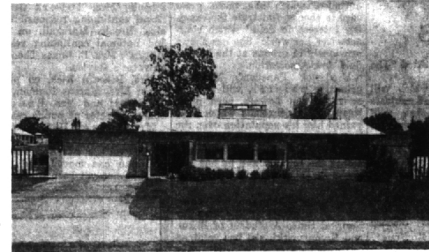


5 BEDROOM COLONIAL

Only 6 months old, outstanding 5 bedroom, 2½ bath Colonial on large 120 ft. lot. Ideal for large family. 2½ car att. garage. Gas heat. Full basement, 21 ft. family room with fireplace. Over 2,400 square feet of living space. Owner transferred and anxious. See TODAY. \$30,950.

DIAL YOUR WAY TO... **Chamberlain Co.** Realtors MI 6-6000

Contemporary Bi-Level

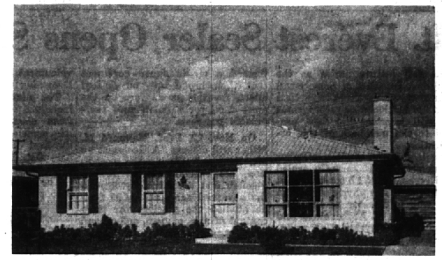


LARGE COUNTRY LOT—in the Bloomfield and St. Hugo School District.

Intiguing INDOOR-OUTDOOR PATIO with barbecue. Charming Country Kitchen. Large Living-Dining room with cathedral ceiling. COMPLETELY AIR CONDITIONED. Carpeting, Draperies, Fireplace, Built-in oven, stove, refrigerator, freezer.

3 Bedrooms, 2½ Baths. YOU WILL LOVE THIS! \$32,500.

Full Basement



NEAR SCHOOLS TOO—Walk to Parker and Queen of Martyrs. CONVENIENT TO DETROIT BUS.

Living room with marble fireplace. Dining area. 3 Bedrooms, 1½ Baths. Full carpeting with nylon 501. Attic fan—double Garage. Professionally landscaped and partially fenced. Land Contract terms to qualified buyer. REAL VALUE for \$22,500.

SNYDER KINNEY & BENNETT



INC.

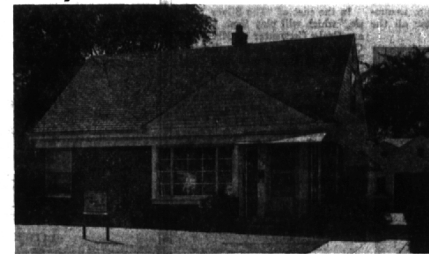
Realtors

32740 Franklin, Franklin

MA 6-9600

239 S. Woodward, Birmingham MI 4-7000

City Doll House

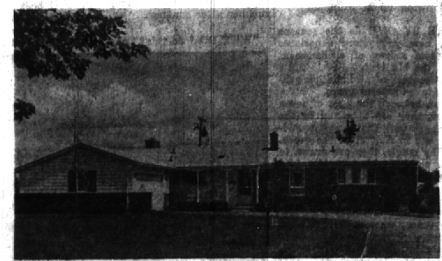


QUIET VILLAGE STREET—ideal for couple who want City convenience.

20-foot Living Dining rm. Kitchen with eating space. 2 Bedrooms and 2nd floor which could easily be finished for 3rd Bedroom and additional bath. Garage with screened Porch attached. Carpeting included.

Perfect condition inside and outside. ONLY \$17,500.

Walk to School



Brother Rice, Marian and Seaholm Schools all within easy distance.

AVAILABLE RIGHT NOW—Move in. Living-Dining room with fireplace, and carpeting. 3 Bedrooms plus a Library which could be small Bedroom or nursery. Large Screened Porch (15x13) at rear. Kitchen with built-in oven and stove, disposal, and eating space. EXCELLENT FAMILY AREA. Priced at \$23,900.

you'll need some of these **SPECIALS** FOR THE LONG LABOR DAY WEEKEND

COLONIAL TWODOR
COMBINATION DOOR WITH UNIQUE PANEL DESIGN GLASS & SCREEN INSERTS
2' 8" x 6' 9"
\$31.95

SHUTTERS
TOP QUALITY — LOW PRICES
EXTERIOR SHUTTERS from \$5.95 pr.
INTERIOR SHUTTERS from \$1.10 ea.

CEILING TILE
LARGE SELECTION ARMSTRONG TILE
from 11¢ sq. ft.

PREFINISHED PANELING

WELWOOD QUALITY
"There is None Better"
ANTIQUE BIRCH . . . \$ 8.95
COLONY OAK 9.65
AMBER ELM 11.95
CONCORD CHERRY 13.95

PAVCO
SUNTAN CATIVO . . \$5.95
CHERRYTONE 5.95
CATIVO 5.95
WHITESONE SAHARA 7.49
FRUITWOOD SAHARA 7.49
PECAN 13.49

UNBELIEVABLE VALUES

ALL PRICES ABOVE FOR 48x8 1/4" PANELS

COME IN & SEE BIRMINGHAM'S MOST COMPLETE DISPLAY

BIRMINGHAM LUMBER & SUPPLY CO.
1025 HAYNES STR. MI 4-3636

Between Adams & Hunter—5 Bks. S. of Maple (E. of Greenfield's)
Hours: Mon. thru Fri. 7:30 to 5:30 P.M.—Sat. 7:30 to 4 P.M.