

A Study in Classics



Girls going back to school or off-to-college should study the classics for high fashion marks. The Chesterfield (left) is updated in blended glen plaid, laminated for extra warmth and shape retention. Extra touches are cabretta leather collar and buttons. In black white, gray/red, or black watch combinations, the coat comes in sizes 8 to 18 and

retails for under \$30. "Pile 'em on" seems to be the watch-phrase for new sweaters. Enthusiasts of this new outdoorsy look can have a field day with Jantzen's collection of pull-overs and cardigans in varying weights and related color schemes. Here, a mohair-wool cardigan over all wool giant-plaid skirt.

Hills Cooperates With Wayne for Psych Services

Bloomfield Hills School District has provided \$20,000 in its 1963-64 budget for establishment of psychological services for the system through use of Wayne State University's psychology department. Dr. Walter J. Ambinder, assistant professor of education and clinical psychology at Wayne, will serve part time as a psychologist working in the school district.

THE UNIVERSITY will provide consulting service to set up a psychological screening service for all grades from kindergarten through the 12th.

In addition, a parent-counseling program for parents of kindergarten children will be established. A diagnostic study and psychological counseling will be provided for emotionally disturbed children referred by teachers in the school system.

Appropriate referral of disturbed children to community agencies, where services are available, will be made.

Offer Social Studies Course to Teachers

Starting Sept. 9, elementary teachers in the Bloomfield Hills School District will be offered an in-service course by the University of Michigan entitled "Teaching of Social Studies in Elementary School."

The course, to be taught each Monday night until Dec. 15, will count for two hours graduate or undergraduate credit or may be taken without credit. Each class period will last two hours.

Page 10—August 22, 1963

THE BIRMINGHAM ECCENTRIC

Stitch Time

The Village Store



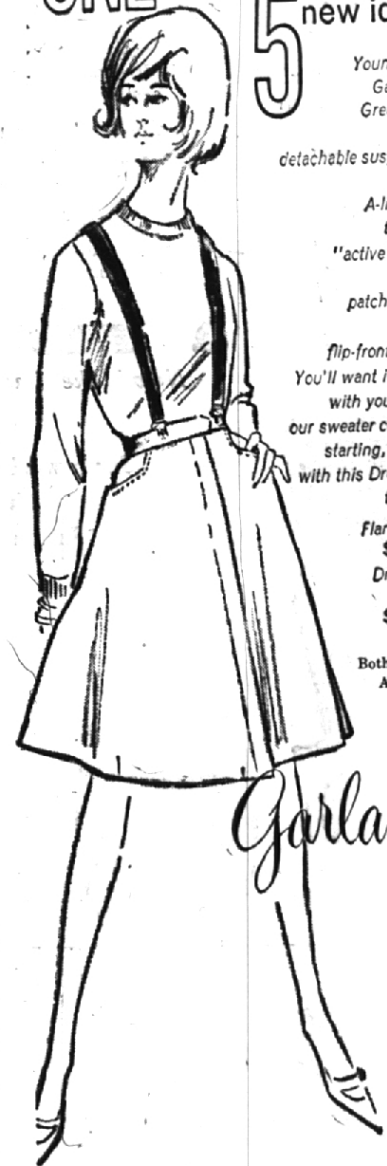
THE GADABOUT...

For gals with get up and go, a slip of a jumper in brist grey/black/wine glen plaid or in blue/olive/rust shepherd's check. S.M.L. 20.00. Here shown with an oxford striped bartender shirt in echoing colors. 8-16. 7.00.

BIRMINGHAM 225 Park St. Midget 4-7100 GROSSE POINTE 28 Karlov St. Tussard 4-7100 SAGINAW 108 S. Jefferson 2-4717 ANN ARBOR 1206 S. University Howard 5-5822

uzette

ONE wonderful skirt with 5 new ideas



Young Ideas.
Gay Ideas.
Great Ideas.
One... detachable suspenders,
two... A-line flare,
three... "active length",
four... patch pockets,
five... flip-front closing.
You'll want it to wear with your pick of our sweater collection, starting, perhaps, with this Dreamspun to match.

Flannel Skirt \$10.99
Dreamspun Pullover \$10.00

Both available in Amber, Ruby, Grotto Blue and Loden.

Garland

Charge Accounts Invited 241 Pierce

MI 6-1930

Open Thursday and Friday Evenings 'til 9 P.M.