

Cultural Events

Aug. 22

BLOOMFIELD THEATER—"The Thrill of It All," starring Doris Day and James Garner, and "That Touch of Mink," starring Cary Grant, Doris Day and Gig Young.
BIRMINGHAM THEATER—"Savage Sam," starring Brian Keith and Tommy Kirk and "Yellowstone Cubs."
CRANBROOK GALLERIES—Annual summer show of work by students of the Cranbrook Academy of Art; will run through mid-September. Also, in the Young People's Art Center Galleries, annual student summer show; will run through mid-September. Gallery hours are 2 to 5 p.m. daily except Mondays and major holidays. Admission charge.

INSTITUTE OF SCIENCE—Exhibit of Pre-Historic Mexican civilization and Pre-Columbian architecture at the Cranbrook Institute of Science. Hours are 10 a.m. to 5 p.m. Monday through Friday and 2 to 5 p.m. on weekends. Admission charge. The exhibit will continue through Sept. 8.

RAVEN GALLERY—"A 'farewell' exhibition of prints and paintings by Robert Brorer is featured as the opening exhibition at the relocated Raven Gallery, 136 Brownell, Birmingham. The show will run through Aug. 24. Regular gallery hours are from 11 a.m. to 1 p.m. except Mondays.

BRIDGE—Birmingham Duplicate at the YMCA, 400 E. Lincoln, Birmingham, beginning at 7:45 p.m. Open to the public.

KENILWORTH GALLERY—One-man show of oil paintings by French artist Andre Gisson at Kenilworth Gallery, 165 Pierce, Birmingham. Gallery hours are 10 a.m. to 5 p.m. and until 9 p.m. on Thursday and Friday. The show will run through Aug. 31.

Aug. 23

RAVEN GALLERY—"The Toppersiders" will entertain at the Raven Gallery, 136 Brownell, Birmingham, beginning at 9 p.m. Admission charge.

Aug. 24

HOOTENANNY—Weekly Saturday night hootenanny at the YMCA, 400 E. Lincoln, Birmingham, beginning at 7:30 p.m. Open to the public.

RAVEN GALLERY—"The Toppersiders" will entertain at the Raven Gallery, 136 Brownell, Birmingham, beginning at 9 p.m. Admission charge.

Aug. 25

RAVEN GALLERY—"The Toppersiders" will entertain at the Raven Gallery, 136 Brownell, Birmingham, beginning at 9 p.m. Admission charge.

Aug. 27

FOLK MUSIC—Folk music entertainment at the Birmingham YMCA, 400 E. Lincoln, beginning at 8 p.m. Open to the public. Admission charge.

BRIDGE—Tuesday Birmingham Duplicate at the home of Hilda Murphy, 2424 Manchester, Birmingham, beginning at 1 p.m. Open to the public.

Aug. 28

BRIDGE—The Birmingham-Bloomfield Area Bridge Club at the YMCA, 400 E. Lincoln, Birmingham, beginning at 7:45 p.m. Open to the public.

Aug. 29

BRIDGE—Birmingham Duplicate at the YMCA, 400 E. Lincoln, Birmingham, beginning at 7:45 p.m. Open to the public.

Aug. 31

HOOTENANNY—Weekly Saturday night Hootenanny at the YMCA, 400 E. Lincoln, Birmingham, beginning at 7:30 p.m. Admission charge.

Sept. 1

CARILLON CONCERT—Guest carillonneur Sidney Giles will give a recital on the Christ Church Cranbrook carillon at 4 p.m. The concert, which is open to the public, may be heard from the grounds of the church on Lone Pine Road in Bloomfield Hills.

Sept. 3

FOLK MUSIC—Folk music entertainment at the Birmingham YMCA, 400 E. Lincoln, beginning at 8 p.m. Open to the public. Admission charge.

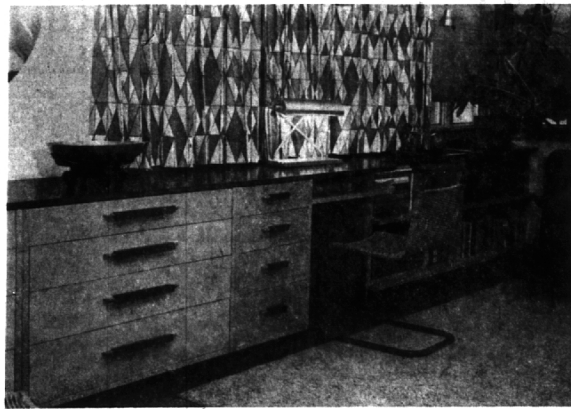
BRIDGE—Tuesday Birmingham Duplicate at the home of Hilda Murphy, 2424 Manchester, Birmingham, beginning at 1 p.m. Open to the public.

Sept. 4

BRIDGE—The Birmingham-Bloomfield Area Bridge Club at the YMCA, 400 E. Lincoln, Birmingham, beginning at 7:45 p.m. Open to the public.

Sept. 5

BRIDGE—Birmingham Duplicate at the YMCA, 400 E. Lincoln, Birmingham, beginning at 7:45 p.m. Open to the public.



AMONG THE Swanson "firsts" was the custom-made look when finished. This dress-first set of modular furniture—various furner-desk-bookshelf group is in one of the ture pieces of various sizes which have a rooms in the Swanson home.

Swansons

(Continued from 1-D)

tectural firms also were asked to submit designs.

"We got Eero, who was in government service in Washington, D. C., to come back to help. Finally, after they were submitted, we did get the project."

SINCE THEN Swanson has been involved with planning and construction for many educational institutions—Drake University (Iowa); Antioch College; Stevens College; the University of Illinois; Louisiana State University; Michigan State University; the University of Michigan—and, of course, Oakland University.

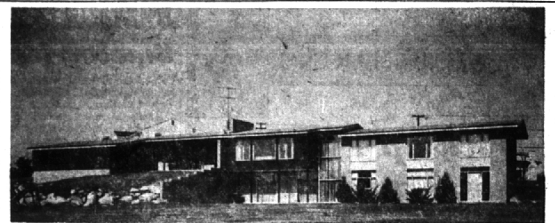
It was through his work on the Oakland County Planning Commission (which he helped get started) that Swanson got involved with Oakland University.

IN DOING A survey on Oakland County's needs for higher education, the group found that Oakland County was the only county in the United States with a population of over 50,000 that did not have an institution of higher learning within its bounds. Oakland County had a population in excess of 500,000 at that time," recalled Swanson. (The study was made in 1955 and 1956.) More research pinpointed the area which would be most centrally located and accessible; the Alfred T. Wilson estate fit neatly within the

IT TOOK Swanson six months to contact Mrs. Wilson; he finally was able to draw her aside at a party and explain the situation. Soon after, she and Mr. Wilson agreed to turn over their large estate near Rochester for the institution, retaining a life interest in the residences on the grounds, but these, too, (including palatial Meadow Brook Hall) will eventually become a part of the school.

"It was the first time a thing like this had been done. The college had to be there—it was based on the study first and then the land was donated," said Swanson.

"SOMEDAY IT will be the third largest university in the state; and first, the University of Michigan second and Oakland third," he said.



IMMEDIATE POSSESSION LOW DOWN PAYMENT

Foyer beyond description with 20 foot high thermopane stairwall window with gold metallic drapes plus a breath taking view of living room with cathedral beamed ceiling and panoramic view. Over 4000 sq. ft. of TOP QUALITY in a prestige area. Newly decorated in and out with lovely carpeting and custom draperies throughout. Four bedrooms (provision for 5th) would be 12x18. 3 deluxe baths, family room on each level. Many extras such as thermopane windows, deluxe stainless steel oven, range, dishwasher and mixer blender, underground utilities, asphalt circular driveway, 2 fireplaces plus Bar-B-Q. Oversize garage. Closets and cupboards galore. Bloomfield Hills Schools—bus only steps from your front door. \$49,500.00. Ask for Alice Rutten.

CHARLES J.

VAN HORN INC.

From Birmingham MI 6-2400
576 N. Woodward Ave.

From Detroit JO 4-5644
Birmingham, Michigan

FOR SATISFYING HOUSE HUNTING

... Look With Broock

LOOKING for a new home can be a frustrating worrisome chore. Or, it can be a pleasant, exciting event. It depends on the personality and professional skill of the real estate people you choose to help you.

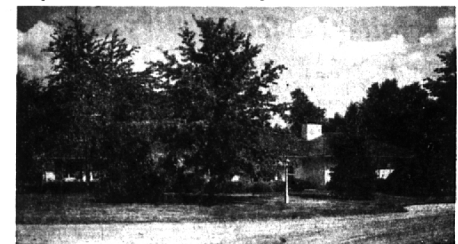
People seem to find it fun to "look with Broock". They get understanding and expert, willing assistance that goes far beyond the ordinary limits of good service. This is why more than 70% of our business comes from referrals by well-satisfied customers. Call us today.

Popular Area—Popular House



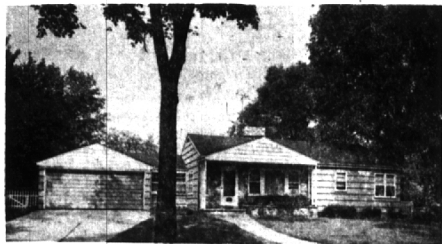
This modern, California type ranch is just right for a young family with children in elementary grades. Close to a fine Birmingham school, it has an excellent floor plan, 3 Bedrooms, full basement, gas heat and nice low taxes. Immediate possession \$18,350.

Superb Floor Plan, Lovely Location



Just look at the setting for this jewel of a home! We think it has the best one-floor plan in all of Bloomfield; Library, bedrooms, dining room and kitchen can all be reached from a central hallway. 3 baths, 4 bedrooms, hobby room, cave-like closets. \$55,000.

One Minute from Birmingham Shops



When you walk into this hospitable little town house you feel as though you'd like to sit down and take off your shoes. And it's just a middling 3-wood shot from the edge of the Birmingham shopping area. Neat as a new wedding band, this home has a fenced yard, 3 bedrooms, 1 1/2 baths and a full basement. \$20,500.

Matchless Early-American Appeal



A wonderful big home for a fine, big family with all the charm and warmth of a traditional Early American mansion. 6 ballroom-size bedrooms are served by 3 baths, with 2 extra lavatories in the right places. 3 car garage and 4 fireplaces, spacious entry hall with winding staircase. High on a lovely hilltop in the exclusive Cranbrook-Quarton Road Estates section of Bloomfield Hills. \$79,500.

YOUR CLINIC'S NOTES

- LUNETTE CHIMES** are again in stock. These are the charming wind-chimes made in the Philippine Islands from the shells of the *Placuna Placenta* bivalve (sometimes called window-oyster). The sound is delightful and they are quite decorative on the porch, patio and terrace.
15 disc—\$1.95
30 disc—\$3.95
- If the cabbage heads begin to crack, bend them over so as to crack the root on one side. This will check the growth.
- PATIO BLOCKS** in seven colors are $8\frac{5}{8}'' \times 17\frac{1}{2}'' \times 1\frac{3}{4}''$. 100 sq. ft. requires only 88 blocks. The weight is 19 lbs. so it is easy for a woman to lay them.
3 for \$1.00
- Place shingles close to squash vines. The squash bugs will be found under the shingles in the early morning. DESTROY them!
- MADONNA LILIES** have arrived and should be planted now. Place bulb so the top is 2" under the soil. Growth starts almost immediately. Leaves that come up will die off and serve as a winter protection. Next spring new growth will produce a generous mass of pure white flowers. Plenty of sun. Heat does not bother them. Feed once a year just after flowering using 4-12-4 or 5-10-5 fertilizer.
3 bulbs for \$1.59
- Muskmellons and watermelons will not be troubled with decay or wireworms if they rest on a thin board.
- Just about the LAST CHANCE to kill CRABGRASS before the seeds become viable.
ORTHO - NOTT (Liquid sprays)
VAUGHAN - STADLER (spreader applied).

McCLELLAN-BALL CO.
Everything for the Yard and Garden
880 S. WOODWARD, BIRMINGHAM, MICH.
FREE AREA DELIVERY, Midwest 4-4188

Open Daily 9 to 9
Saturday 9 to 6

MAX BROOCK INC.
"Nationally Known Realtors"
300 S. Woodward

MI 4-6700
JO 4-6700