

# BRIDGE

## in BIRMINGHAM

By **BUD MAYBAUM**  
Southern Michigan  
Bridge Association

It is so often that we get a big hand and believe we bid it correctly, then have the "wails cave in on us." At this point we feel that this only happens to us and how wrong we must be.

Today's hand is from the recent Summer Nationals in Los Angeles and was played in the mixed team competition by top players in the country. The North hand was held by Helen Portugal, one of the best woman players, who I understand is formerly from this area. Her partner was Erik Paulsen.

Dealer is North.  
**NORTH (Helen Portugal)**  
♠ A Q 6  
♥ A  
♦ A Q J 8 7 3  
♣ A K J

**WEST**  
♠ 10 8 5 3  
♥ K 9 2  
♦ K 10 9 6 5 2  
♣ void

**EAST**  
♠ K J 4  
♥ 8 7 5 4  
♦ void  
♣ Q 9 8 6 3

**SOUTH (Erik Paulsen)**  
♠ 9 7 2  
♥ J 10 6 3  
♦ 4  
♣ 10 7 5 4 2

The bidding:  
North East South West  
pass 2♣ 2♦ Dblu  
Re-dble all pass  
Opening lead: ♠ A  
The opening bid of two clubs was their only forcing bid and South's response of two diamonds was the artificial bid of a negative response. South covered the opening lead of the three of spades with the queen. West won with the king and returned a heart.

**THE QUEEN** of diamonds was led from the dummy. West won this trick. Another spade was led, won by the ace in North's hand. Paulsen now led the king of clubs from dummy and was ruffed by West and a third spade returned. East won with the jack and returned another heart that was ruf-

ted by the North hand and from there on in West and the dummy swapped tricks.  
It was reported that when the disaster was over, Paulsen made the remark: "Sorry, Helen, I didn't realize it was a SOS redouble." At least he didn't lose his sense of humor.

**RECENT WINNERS** in Birmingham Tournaments include: Charlotte England playing with her daughter, Dorothy Goodwin (this was the daughter's first master-point tournament and they came in first); Gretta Shepherd and Olive Swarzwald; Hilda Murphy and Goldie Heale; D. Kelly and G. Kona; Lois and Bert Mann; Mr. and Mrs. Bruce Coryelle; D. Smith and B. Owen; John Meeka and Ed Weller; Tom Hill and Don Hines; Mr. and Mrs. Camaday; Nancy Hendrickson and Ann Osborne; Rene Ross and Ann Haakim; Nancy Molmen and Veretta Fairchild; Jerry Cooper and Peter Polinski; Frank Loy and Shirley Campbell; Stewart Murphy and William Axler; Sam Dorfman and Leo Keyatynak.

**BRIDGE INFORMATION** that may be of interest to the reader is the first Red Point Regional Tournament in Pittsburgh over the Labor Day week end.

The bridge tournament at the Community House in Birmingham will not resume until the third Monday of September and that will be their masterpoint game.

The Windsor Section will be the second week end in September. Our Southern Michigan Section will be the third week end, starting Sept. 12, in Pontiac.

We will have two regional red point tournaments in October. The first week end in October will be the Fort Wayne Regional and the third week end will be the Detroit Regional. It is my intention to report all these tournaments and I'll have detailed information concerning all of them.

- ACROSS**
- 4 Span
  - 5 Pterodactyl
  - 10 Rugs
  - 14 Coat
  - 18 Draft animals
  - 36 Unauthorized leave
  - 17 Fly lightly
  - 18 Current
  - 20 Otherwise
  - 21 Regulate
  - 22 Rusted
  - 23 Birds
  - 28 Extends
  - 29 Tendencies
  - 30 Young owl
  - 31 Factor
  - 32 Curly
  - 33 Elongated
  - 34 Venetian
  - 35 Compass
  - 40 Sec
  - 41 Lilies
  - 42 Respond
  - 44 Scriminize
  - 45 Shallow
  - 46 Envious
- DOWN**
- 1 Russian mountains
  - 2 Cliff
  - 3 Lorry
  - 5 Party
  - 8 Heavy-coated dog
  - 9 Medley of laws, etc.
  - 10 Sat
  - 11 Tint
  - 12 Heath genus
  - 13 French river
  - 14 Aule
  - 15 Terminated
  - 16 Bitingly
  - 17 Charm
  - 18 Building projection
  - 19 Stages
  - 20 Debtor
  - 21 Helms
  - 22 Confines
  - 23 English
  - 24 Command
  - 25 Order
  - 26 Rhythm
  - 27 A single time
  - 28 Scaas
  - 29 Tichas
  - 30 relative
  - 31 Oriental
  - 32 Yander
  - 33 Animal foot
  - 34 ---- hola
  - 35 Unwritten tests
  - 36 Estimation
  - 37 Board
  - 38 Drow
  - 39 Pile
  - 40 Eager
  - 41 Clara
  - 42 Both ----
  - 43 Direct
  - 44 Licensed accountant
  - 45 underground
  - 46 Female ruff

Answers to  
Puzzle Will  
Be Found  
on Page 7-D

1	2	3	4	5	6	7	8	9	10	11	12	13
14												
15												
16												
17												
18												
19												
20												
21												
22												
23												
24												
25												
26												
27												
28												
29												
30												
31												
32												
33												
34												
35												
36												
37												
38												
39												
40												
41												
42												
43												
44												
45												
46												
47												
48												
49												
50												
51												
52												
53												
54												
55												
56												
57												
58												
59												
60												
61												
62												
63												

PUZZLE NO. 772

### DOWN TO EARTH

# Writer Makes Return Visit To Several London Gardens

**LONDON, ENGLAND**—Here we are in this humming city enjoying the excitement created by the living patterns of 6,000,000 people.  
The undercurrent of noise is created by the vast army of black Austin-Healey cabs which have the ability to turn abruptly, like a person spinning around on his heels.  
In the past we have made the usual tours which are necessary to appreciate the background of our hosts.  
There are always two stops which I repeat so as to savor their beauty.

**THE DUTCH** Gardens in Kensington Park, enclosed by pleached trees forming a tunnelled arch around its large, oblong pattern, is one.

Here you see English design in a formal garden with appropriate colorful flowers. As you study the planted masses of color you see only the best specimens available.  
This was the favorite personal garden of Queen Mary and is adjacent to the home of Mr. and Mrs. Anthony Armstrong-Jones.

**A SECOND STOP** is a "must" for everybody going to London—and, "for share," it is never on the prescribed tours. It is the roof garden of Derry and Toms Department Store.  
There are one-and-one-half acres of gardens over 100 feet above the ground on the roof of the store. There are fountains and waterfalls, and the soil is an average of two feet six inches deep.

**HERE YOU** will see apple trees laden with fruit (an indication that they are healthy) and all trees, shrubs and flowers providing peak performance for the starry-eyed visitor.

A couple of ducks swim in the water and birds wing their way through the trees. The water is supplied from artesian wells 400 feet below.  
A restaurant provides an opportunity for maximum enjoyment of the gardens.

**THE APPLEFORDS** of Bradway Blvd. have been sharing some exploring trips here.

I wish their local friends could slip up behind them as they hesitate at a street corner and study their textbook, "Turn Right at the Fountain," which is a book for those who enjoy walking to explore the unusual nooks of Londontown—and other cities of Europe.  
I hope their shoe leather holds up as well as their spirits.

**COVENT GARDENS** is the market center where fruits, vegetables and flowers are sold to retailers.  
The immense bags of carrots, artificially packed boxes of green onions and colorful fruit are all delivered to this center, with labels from all over the world—like beautiful Persian melons from Israel.  
Next to the market place is St. Paul's Church—built for the farmers around 1810. The architect was told to build a barn.  
As the architect Inigo Jones turned over the keys, he is said to have said: "I have built the handsomest barn in England."

**PRIOR TO** our departure from the U. S. we were the guests of Dr. Roland DeMarco at Finch College in New York city.  
The courtyard garden next to his brownstone structure always interests me: He plants five pounds of grass seed, the timing dependent upon dates of hospitality. The grass is up in three days, lasts three weeks; then the cycle is renewed.

**THE ICING** ON the cake was the experience aboard the SS France. It is a new ship with beau-

tiful decor, total design and wonderful French cuisine. The large swimming pool, covered with a glass roof became my headquarters.  
Aboard were the Joseph E. Wellmans, also the Pierson Smiths with their four children, bound for their new home in Birmingham, England.  
**THE NATHANIEL** Abates and the Netherlands.



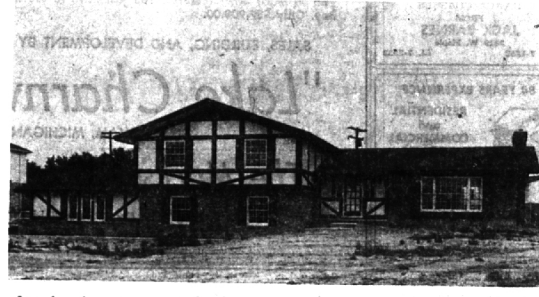
**Mrs. Burlingame**

## STILL MEADOW

Carriage Trade Homes  
Gracious Country Living

LONG LAKE ROAD

Large rolling sites, 2/3 to 1 acre in size — Winding roads — Sewer and gas line in — Architectural control for protection.



**Intriuging Swiss Chalet Accent** gives this 4-Bedroom Tri-Level an individuality all its own. Large living room with bay and fireplace. Separate Dining room. Family room with fireplace and bar with sink. 3 full Baths.



**Stately Colonial** with an aura of magnolia blossoms and rustling hoop skirts BUT all the luxury inclusions which the modern, active family must have. 5 Bedrooms, 2½ Baths. Full Basement. Company-sized Dining room. Family room. 2 fireplaces.



**Colonial Tri-Level** plus Basement. Excellent floor plan with quality details and construction. 4 Bedrooms, 2½ Baths. French doors from two Bedrooms open to Balcony. Absolutely beautiful Library with studio ceiling. Also a Family room. Separate Dining room. 3 Fireplaces. Aluminum siding for easy maintenance.

We could go into endless detail on any of these lovely homes—of course, they all have "dream" kitchens with all equipment and built-ins and Breakfast areas—each has its own special charm to suit your needs.

Here is a subdivision in the finest residential area anywhere surrounded by the highest quality homes — with Bloomfield Hills schools and address — a secluded Country atmosphere but less than a mile to either Telegraph or Woodward — within a short radius of Country Clubs, Lakes, Cultural facilities, Churches, Schools and Shopping. AND priced from \$40,000. OPEN EVERY DAY—DRIVE OUT AND SEE.

30 Years of Integrity and Service

## SNYDER KINNEY & BENNETT

INC.  
Realtors

239 S. Woodward, Birmingham MI 4-7000  
32740 Franklin, Franklin MA 6-9600

A Highly Qualified Staff with Experience and Reputation

## PICTURE FRAMING

EXPERTLY DONE IN OUR OWN SHOP!

### ART SUPPLIES

FOR THE AMATEUR AND PROFESSIONAL

### ART CLASSES

FOR ADULTS AND SCHOOL AGERS

VISIT OUR ART GALLERY

1220 N. Woodward (E. Side)  
2 blocks South of 12 Mile Rd.  
CALL LI 8-7680  
Open Mon. thru Sat. 9 a.m. to 6 p.m.

## TRAVELERS CHECKS

..... are accepted everywhere

so is *Overbrook*

### MAX BROOCK INC.

MI 4-6700

\*Money in the Bank \*West Long Lake and Lahser Roads