



Trip Maybe, But Not on Woodward

An open letter to Birmingham teen-agers:
Last Thursday afternoon I received a telephone call from one of you.
The brief conversation went like this:
Teen-age boy: Mr. Evoe?
Myself: Yes, 148 or 31.28
Teen-age boy: Go to hell!
At this point you hung up, giving me no opportunity to find out why I should pack my bags, bid farewell to my friends and family and begin my journey.

I ASSUME you were disturbed with an article that appeared in last week's Eccentric regarding a teen-age pastime in the Birmingham area known as "Woodwarding."
Now if you felt some of our facts were wrong or our interpretation of the rules of the game were in error we would have been glad to listen to your arguments.
I would have tried to explain that while "Woodwarding" might be an enjoyable way to spend an evening, police department statistics show US-10 is an accident-prone roadway.

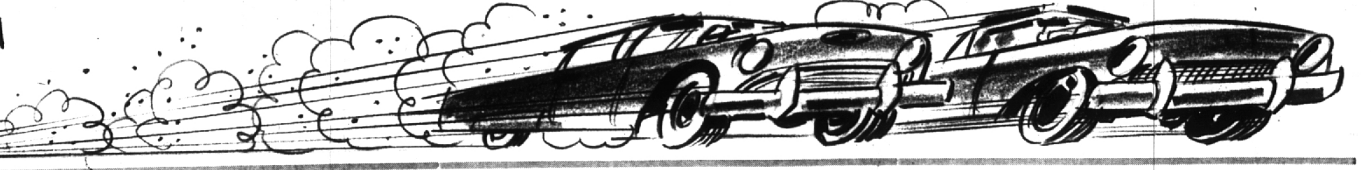
IN BIRMINGHAM, police records show there was a total of 460 traffic accidents in the city during 1962. Of these, 196 or 37.50 per cent were on US-10 and 38 involved personal injury.
For the first seven months of 1963, the figures are even more alarming. There have been 537 accidents in the city to date. Of these, 250 or 31.28 per cent occurred on either Woodward or Hunter.

OF the total there are 49 in which accidents and two deaths, including a 17-year-old Seaholm girl who was killed in February on Woodward north of Lincoln.
SINCE OUR one-aided conversation last week I have talked to several area youngsters who have either gone "Woodwarding" themselves or have friends who do.
Both boys and girls look upon the "sport" as a way to keep in contact with old friends and to meet new ones.
The boys believe the street is an excellent place to test any improvements made on their autos.

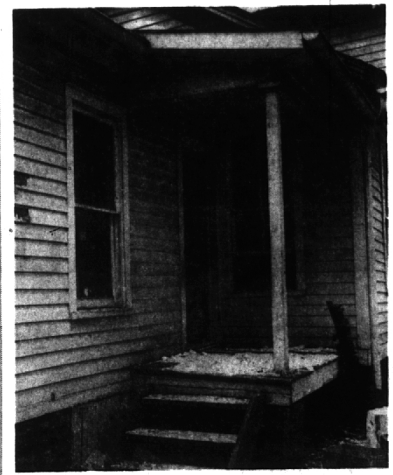
THESE teens tucked in the trunk (no professional auto racer would compete with hubcaps on as a safety measure), the racer is ready for a night on the town.
AS ONE boy explained it: "We drive along Woodward looking for a car to race. If we can't find a challenge on the street the next place to look is the drive-ins."
In addition to finding potential racers, the competitors also have the opportunity to see what other fellows have done to their automobiles.

A 17-year-old girl explained it this way:
"Like if you stop at a light and its red, they (a carload of boys) start playing the role and make noises with their car."
"They seem to think it's cool when the light turns green and you have a fast car you can put them in their place," she said with a triumphant look on her face.

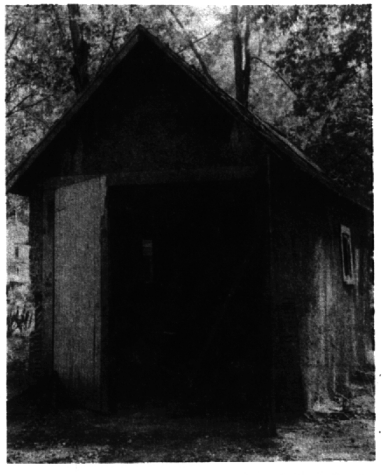
SHE ADMITTED that the reason many girls go to drive-ins is just to get "picked up" and the guys "to show off."
Another practice she mentioned which boys have developed to attract girls is trying to run the girl's car off the shoulder of the road.
Therefore, if you still think I should go to hell for my efforts I'll be on my way; but you can bet I won't go by way of Woodward Avenue.
Sincerely,
Larry Evoe
City Editor



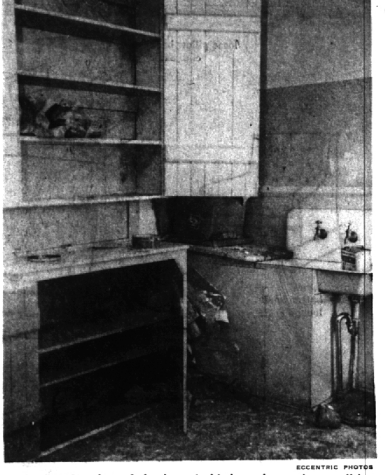
Order Parking Lot Construction



This is the back porch of one of the homes the City has purchased in the block south of Shain Park for a municipal parking lot. Built in 1870, it is located at 227 Merril.



This narrow, one-car garage was probably built during the days of the Model-T. The oldest home is at 366 Henrietta; it was built in 1865.



An interior shot of the home's kitchen shows the condition of the walls and shelf space. All six homes bought by the City date back before the turn of the century.

City to Start Condemnation Proceedings

By LARRY EVOE
City Editor
Birmingham city commissioners have instructed the administration to begin making plans for the construction of a temporary parking lot in the block south of Shain Park.
The commission also directed City Manager L. R. Gare to prepare a condemnation resolution for the three homes in the block the city has not been able to obtain. The resolution will be discussed Sept. 9.
Gare told the commission Monday night the purchase of the property, not be constructed this year; but that the buildings be removed, the area graded and a temporary surfacing be placed on the lot so it may be used until next summer when a permanent structure can be built.
Preliminary sketches presented to the commission showed the various layouts for both meter parking and attendant parking in the proposed lot.
Commissioners directed Gare to have the lot designed for angle parking with meters. The lot will accommodate 96 cars.
Although the meters cost between \$55 and \$60 each, Gare said he felt the City could have better control over the lot with them.

ON W. MAPLE DOWNTOWN City, Chamber of Commerce OK Tandem Parking System

Tandem parking has been approved for W. Maple Avenue. Birmingham city commissioners Monday night voted to install this system on Maple from Chester to Brownell.
The decision to act on the traffic congestion problem came after a two-week delay to allow the Birmingham Chamber of Commerce parking committee time to study the plan.
The chamber endorsed the tandem proposal and praised Police Chief Ralph W. Moxley on his "excellent and debated study of the W. Maple parking problem."
Tandem parking consists of two cars parking bumper to bumper—the rear of one touching the front of the other—with a "no-parking" space separating each pair of stalls. This type of parking has been in effect in front of the municipal building since the summer of 1961.

spaces between Chester and Brownell from 76 to 66.
The estimated cost of changing from conventional parking to the tandem will be about \$648, according to Moxley. This, he said, would include the cost of 32 twin adapters, 32 meter post signs, plus labor and materials.
A SUGGESTION by the chamber of commerce to reduce the space between the stalls from 10 to 8 feet was rejected by the commission. Moxley said the 8-foot separation would only gain one parking space in the whole area.
Donald L. Cummings, chairman of the chamber's parking committee, said his group did not realize they would only gain one space by using the eight-foot restricted zone and had merely picked it because of its use on Martin.
"Our only interest was to try to make it easier for people to park," Cummings said.
A C of C suggestion to convert the nine 30-minute meters to one-hour meters was also rejected by the commission.

CHIEF MOXLEY said that the 30-minute meters were at the ends of the various blocks and were used by short-time parkers. He said if they were removed the "one-stop" parkers would be forced into mid-block and could create a congestion problem.
Traffic surveys conducted by the police department showed many drivers park on Maple for less than an hour, Moxley said.
"On Maple between Brownell and Woodward it was found all vehicles parked on an average of 25 minutes," he said. "Those vehicles parked within the legal time limit of one hour were parked on the average of 22.2 minutes."
He said only four vehicles were parked for more than one hour.
SIMILAR AVERAGES of park (See MAPLE, 8-A)

School Information In Special Section

Summer is almost over for thousands of Birmingham area school children. They will start back to school the first week in September.
For enrollment dates and other valuable information, be sure to see the annual "Back to School" section appearing with this week's Birmingham Eccentric.
This special, two-part, 32-page tabloid is filled with articles, photos and advertisements that will give you information and suggestions for preparing for back to school.
Material for the special cover photo was furnished by Demery's, Jacobson's, Harrison/Luggage and Harold Turner Ford.
Turn now to the "Back to School" section and find:

Opening dates	3
Hills football team rebuilds	3
B'ham bus schedule changes	4
New teachers in B'ham, Hills	12
Catholic schools open Sept. 4	13
Hills bus changes	17
School calendars	25
Berkshire Jr. High to open	28
Seaholm, Groves prepare for '63 grid season	30

Oh Beautiful For Parking Lots—Here!

The Citizens Action Committee is going to study the problem of beautifying several of Birmingham's municipal parking lots.
City commissioners Monday night gave their approval to a request by the group to seek ways in which the parking lots might be made more attractive.
The CAC is a group of civic-minded Birmingham area residents who are interested in "enhancing the best of the community and creating attitudes and projects that will make it an attractive community to live in."

IN A LETTER to the commission, former Mayor Mrs. G. Howard Willett, Jr., chairman of the CAC, said it was the feeling of the group that residents of Birmingham had "demonstrated that they are deeply concerned that we add beauty and excellence to our city's core."
She said the committee was offering its services to research ideas for the beautification of Lot No. 1 and the proposed lot in the block south of Shain Park.

SHE SAID the group plans to use the Baldwin Library for researching what other cities have done in terms of parking lot and parking structure beautifications.
"We also plan to ask the Chamber of Commerce to communicate with the University of Michigan, Michigan State University, Wayne State University and Oakland County for its available material on landscaping and design," she said.
Meetings are planned with architects, designers and landscape specialists who live in the Birmingham area to seek their feelings about the community.
Commissioner Charles A. Renfrew said he would "like to see them encouraged to do what they can."

MAYOR WILLIAM H. Burgum, who is also a member of the CAC, said it was not the intention of the group to come before the commission with a blueprint for the lots.
"They will research and develop ideas," he said. "They are not trying to interfere with the actual construction of the lots."
Commissioner Carl F. Ingraham (See CAC, 5-A)

Civic Groups Plan Citizens' Political Forum; See Story on 3-B

Board Tries to Clarify Secret Society Policy

By LARRY EVOE
City Editor
In an effort to clear up any "misunderstanding" as to its policy, the Birmingham Board of Education met Tuesday night with parents of youngsters who are known to belong to secret organizations.
Invitations were sent out to 17 persons who have children that belong to two groups that are active in the Birmingham school system—Tau Alpha Epsilon, or TAE, and Alpha Omega, or AO.
The board announced in June that beginning in September it would have no choice but to deny class credit, promotion or graduation to any pupil who knowingly is a member of a prohibited organization.

BOARD PRESIDENT E. Ross Hanson in speaking to the parents said the board had legal opinions from both James Thorburn, board attorney, and Oakland County Prosecutor George E. Taylor that TAE and AO fall within the state statute that prohibits a public school student from belonging to a secret organization.
TAE, represented by attorney Bethel Kelley whose daughter is a member of the group, believe they do not come under the statute. There were no known spokesmen present.
Kelley said his group would take such legal action as necessary to prevent the board from prohibiting youngsters from belonging to TAE.

EARLIER in the meeting Board Trustee Pell Hollingshead, also an attorney, said the state statute would be enforced unless the board was "enjoined by the courts" not to do so.
Taylor said it was the opinion of his office "that these two organizations definitely come within the prohibition of the statute."

BULLETIN
A Bloomfield Township man was found dead shortly before noon Wednesday in his suite of offices in the Capitol Park Building, 1145 Griswold, Detroit.
Thomas Houle, 7448 Franklin Court, owner of the Hair & Scalp Specialists, Inc., was discovered by an employee of the company, lying face pool of blood, Police said Houle was an apparent victim of a beating and cutting.
The company also has offices in Roseville, Allen Park and north-west Detroit.

"We believe that the section of the statute which defines such organizations is particularly controlling in that these two organizations are composed wholly or in part of pupils of the public schools of this state and perpetuating themselves by taking in additional members from pupils on the basis of the decision of their membership," Taylor said.

HE SAID he did not believe the fact that such organizations have junior, senior and alumni memberships and engage to some degree in charitable or activities other than a mere social nature would have any bearing whatsoever in excluding such organizations from the prohibition of the statute.
"We believe it is particularly important in the final provision of the statute to note that any official or member of any board or other person violating or knowingly permitting or consenting to any violation shall be deemed guilty of a misdemeanor," Taylor said.

HE SAID there was no doubt in his mind that parents or other persons in control of the pupils outside of the jurisdiction of the school board who knowingly permit violation of this statute would likewise be guilty of a misdemeanor and subject to prosecution.
"We think that it might add some cogency in your distribution of warnings to the parents and pupils to emphasize this particular (See BOARD, 4-A)

IN THIS ISSUE
College girl goes on a shopping spree. See story, pictures on 3-A.
Architect J. Robert F. Swanson and wife give capsule account of their combined and individual careers. See story, pictures on 1-D.

Amusements
Art for Art's Sake
Arts of Living Page
Bride
Business News 3, 5
Calendar of Cultural Events
Church
Crossword
City Beat
Classified Ads
Down to Earth

4-A Eccentrics
4-B Editorials
1-B 1-D Movie Guide
7-D 1-D Nature Now
8-E Obituaries
6-D Real Estate
6-B Society
3-E Sports
1-B Theaters
3-E This & That
3-D Yesterday Happenings
1-B