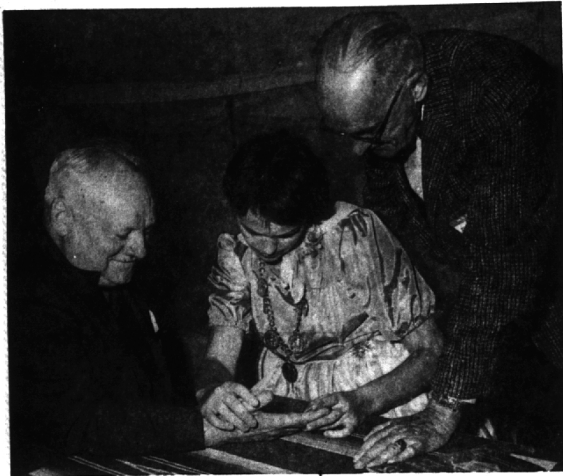


Annual Get-Together For Circumnavigators Held Here



You might expect to hear many tall travel tales at a gathering of nearly 250 circumnavigators and their guests, but you would be disappointed. "Everyone is more anxious to tell others about where he's been and what he's seen than to listen to others tell him," confided a local "circum." Hence, a tacit understanding: not too much travel talk. Hosts for the annual summer get-together for the past four years have been the J. D. Richardsons, 1435 Glengarry Road. At right, Mrs. Richardson (left) admires part of the decorations—all in a Bohemian vein—done by Mrs. John W. Kinsey, 2782 Hylane Drive, Birmingham, and Mrs. James E. Fritts, of Detroit. Several members who had Bohemian costumes wore them. Among the local round-the-world travelers were J. A. Frost, Edwin O. George, H. F. Grindley, John W. Kinsey, Bruce A. McDougall, J. D. McKay, Ken Spicer, George Gotshall, Claude Sprunk, Tom Barnes, Donald Rotham, Dr. Thomas Watson, Robert Hartman, John Thornhill, Vern Hanna and Dr. Ralph Fox. Entertainment included two diving exhibitions—one serious, one "showing"—in the Richardson pool and fortune-telling. Will there be "clear sailing" next year? wonders head "circum" George Pierrot (lower photo) along with Don Ahrens (right), 540 Haverhill Road, Bloomfield Hills. "Look for clear skies and a steady breeze," the madame replied.



Former Resident Has Book Published

Mrs. Paul J. (Fanny K. Devine), formerly an area resident and member of the Newcomer's Club, has had published a book of poems entitled "A Star on His Shoulder." It is published by D'Eramo Publishers and printed by Dai Nippon

Printing Co., Ltd. Mr. and Mrs. Devine are now living in La Grange Park, Ill. Need a better car? Then trade in your old model on a new one. Find cash buyers fast with Eccentric Want Ads. Ask about our 3 in-section offer with cancellation privileges. Call MI 4-1100.



A title on the door . . . rates a Bigelow on the floor Whether it's bestowing new honors on the "king" of the household or giving your whole home a luxury look—nothing, but nothing can compare with a Bigelow! Come in and see the handsome carpets that very important people choose for their very important homes! You'll be surprised at how little luxury costs!

Beautiful Bigelow from \$4.95 sq. yd. and up.

Harold B. Bigelow, Inc.

CARPETS and RUGS

2863 Woodward Avenue (2 blks. S. of 12 Mile, W. Side)

LI 2-9595 Open Monday, Thursday, Friday

LI 2-9678 BUDGET TERMS Friday Evenings 'til 9

Workshop Uses Local Talents

Involved with an upcoming Performing Arts Workshop production are three Birmingham area residents. The play, adapted from a narrative poem, "Chiara," by Ruth Russell Davis of Bloomfield Hills, is scheduled for six performances, Nov. 20 through 24, at the Detroit Institute of Arts.

THE PLAY is an original musical religious drama; the adaptation—in the form of the "dramatic masque," a kind of theater popular in the Middle Ages in which each actor must be able to act, dance and sing—was done by Mrs. Sara Lee Stadelman of Marygrove College, director of the workshop. Performing in it will be two residents, Des Neiges Marquis, 2656 Meadowood Circle, Lathrup Village, and Hope Tate, 838 Helton Court, Birmingham.

Artists

(Continued from 1-D)

ARTISTS LIVED and worked in skylighted studio attics as were found in Greenwich Village because the light was good and the rent was cheap. These havens were discovered, refurbished and remodeled. Now few artists, poets, dancers or college professors can afford these surroundings. Again the artists have shown others the way to appreciate "things" in life—things people had distained because of low social status. The artist disregards "what people will think" and selects on terms of beauty and use. And people gratefully follow.

THE TIGHT-ROPE WALKERS are the artists who are part-time artists and full-time businessmen or wives and mothers. Part of life requires conformity, but the success of art depends on independent vision. An ideal executive or his wife usually makes a timid painter. Conversely, a good painter usually makes an "arty" mom or employee.

WHAT SETS ARTISTS apart from the rest of the



Potpourri

by JULIE CANDLER
Special Writer

Potpourri, along with Julie Candler, will go on vacation for the remainder of the month of August. The column will be resumed in September.

people is their endless curiosity. They cannot help but respond to every strange object or occurrence. They are often considered childlike because such curiosity is a youthful characteristic. (Isn't that a shame?) But then, it's a good thing that not everyone lives with his senses always atingle. Someone must attend to the daily routine tasks of running the world—and it won't be the artists. They will be off chasing some will-o-the-wisp ideas and visions to catch for human enlightenment.



"Super-Right" Top Quality, Gov. Inspected, Completely Cleaned

FRESH FRYERS

WHOLE FRYERS

CUT-UP, SPLIT OR QUARTERED

Legs 47¢

Breasts WITH RIBS ATTACHED 49¢

LB. 29¢

LB. 25¢

TEXAS STAR—CLEANED

Jumbo Shrimp

PEELED AND DEVEINED 2.69 1 1/2-LB. BAG

GRADE "A" DUCKS 4 TO 5 LB. SIZE 45¢

KING OF ROASTS—"Super-Right"

BEEF RIB ROAST

4th & 5th RIBS 69¢

FIRST 5 RIBS 75¢

FIRST 3 RIBS 79¢

COUNTRY STYLE Spare Ribs 43¢

"SUPER-RIGHT"

PORK LOINS

FULL 7-RIB PORTION 33¢

LOIN END PORTION 43¢

CENTER CHOPS

RIB CHOPS 79¢

LOIN CHOPS 89¢

A Special Buy!

Popsicles

ORANGE OR CHERRY 19¢ PKG. OF 6

ORANGE OR CHOCOLATE DRINK, OR HALF GAL 29¢

LEMONADE

HALF GAL CARTON

SAVE 10¢—JANE PARKER

Blueberry Pie

8-INCH SIZE 49¢

JANE PARKER PLAIN OR POPPYSEED Vienna Bread . . 2 LOAVES 39¢

JANE PARKER Angel Food Cake LARGE RING 39¢

CALIFORNIA VINE-RIPENED

Cantaloupes

27 SIZE 4 FOR 99¢

Nectarines LE GRANDE 29¢

California Plums 29¢

Many Every-Day Low Prices at A&P! Why Pay More!

KELLOGG'S—12-OZ.

Corn Flakes 24¢

POST'S—8-OZ. PKG.

Crispy Critters 25¢

KELLOGG'S FROSTED—8-OZ.

Sugar Stars 25¢

POST'S Alpha Bits 12-OZ. PKG. 37¢

KELLOGG'S Special K 6 1/2-OZ. PKG. 26¢

SHORTENING—5¢ OFF LABEL

Spry . . . 3 71¢

WHITE BEAUTY Shortening 3 49¢

14-OZ. BTL

Heinz Ketchup 22¢

KETCHUP

Ann Page 20-OZ. BTL 23¢

EVAPORATED MILK—14 1/2-OZ. CAN

Whitehouse . . 13¢

CARNATION OR

Pet Milk . . 14 1/2-OZ. CAN 14¢

JIF—12-OZ. JAR

Peanut Butter 39¢

PEANUT BUTTER—CREAMY

Sultana . . 2 67¢

ANN PAGE, (Except Angel Food)

Cake Mixes REG. PKG. 25¢

DEL MONTE FRUIT

Cocktail 1-LB. 13-OZ. CAN 31¢

DEL MONTE YELLOW CLING

Peaches . . . 1-LB. CAN 20¢

STOKELY'S—JUICE

Tomato . . . 1-QT. 14-OZ. CAN 27¢

SULTANA BRAND FRUIT

Cocktail . . . 1-LB. 13-OZ. CAN 30¢

A&P Pineapple-Grapefruit—46-OZ.

Fruit Drink 4 FOR 99¢

HAWAIIAN

Punch . . . 1-QT. 14-OZ. CAN 33¢

GRAPE DRINK

Welchade QT. CAN 28¢

BEET SUGAR

NEW EVERY-DAY LOW PRICE 5 LB. BAG 59¢

HEINZ CHICKEN-NOODLE SOUP

3¢ OFF LABEL 13¢ REG. CAN

A&P Apple Sauce

DELICIOUS WITH PORK 12¢ 1-LB. CAN

SUPER-RIGHT—ROAST BEEF OR CORNED BEEF 12 OZ. CAN 39¢

BEEF STEW—24-OZ. CAN 47¢

Dinty Moore 47¢

SULTANA MED. SIZE Shrimp . . . 5-OZ. CAN 49¢

FANCY SOLID LIGHT—6 1/2-OZ. A&P Tuna Fish 27¢

All Veg. (Except Asp., Mush. & Onion)

Campbell's REG. CAN 13¢

All Veg. (Except Mush. & Split Pea)

Heinz Soup REG. CAN 13¢

ANN PAGE—10 1/2-OZ. CAN

Tomato Soup 10¢

SULTANA BRAND—1-LB. CAN

Pork & Beans 10¢

BAYER Aspirin 100 TABLETS 69¢

TOOTHPASTE

Crest FAMILY SIZE 69¢

DOG CHOW

Purina 25 LB. BAG 249

DAILY BRAND

Dog Meal 25 LB. BAG 209

LIPTON TEA BAGS

15¢ OFF LABEL 100 IN PKG. 87¢

Sunnyfield Flour

GOLD MEDAL 5 LB. BAG 39¢

5 LB. BAG 49¢

GIANT TIDE

5¢ OFF LABEL 3-LB. 1 1/2-OZ. PACKAGE 68¢

FACIAL TISSUE—PKG. OF 400

Angel Soft . . 19¢

DIXIE—PKG. OF 25

Cold Cups . . . 27¢

SHORTENING

dexo . . . 3 LB. CAN 59¢

QUART BOTTLE

Mazola Oil . . 59¢

THE GREAT ATLANTIC & PACIFIC TEA COMPANY, INC.

A&P Super Markets

AMERICA'S DEPENDABLE FOOD MERCHANT SINCE 1859

All prices in this ad effective thru Sat., Aug. 10th in all Eastern Michigan A&P Super Markets

Teachers Attend 'Phonics' Course

Ten Birmingham primary teachers will go to school early this fall to sharpen their skill in teaching phonics to young readers. They are among 150 Oakland County teachers who will attend a week-long series beginning Aug. 26 at the Oakland Schools office. Dr. Helen Murphy and Dr. Lee Indrissano of the Boston University Education Clinic are in charge of the sessions.

THE BIRMINGHAM teachers include Mrs. Dorothy Bergman, Mrs. Betty Calomeni, Miss Marcia Fairgrove, Mrs. Eva Johnson, Miss Barbara Linger, Miss Ann Masak, Mrs. Norma Needham, Mrs. Velma Ruby, Charles Thomas and a first grade teacher to be selected from Harlan School.

Dr. Dodd Roberts, director of language arts education for Oakland schools, said Dr. Murphy was invited to this area because of her talent in developing effective teaching methods in the primary grades. Methods of teaching reading developed at Boston University by Dr. Murphy and her associates will be demonstrated in the August clinic series.

Answer to Puzzle No. 770

1	2	3	4	5	6	7	8	9	10
11	12	13	14	15	16	17	18	19	20
21	22	23	24	25	26	27	28	29	30
31	32	33	34	35	36	37	38	39	40
41	42	43	44	45	46	47	48	49	50
51	52	53	54	55	56	57	58	59	60
61	62	63	64	65	66	67	68	69	70
71	72	73	74	75	76	77	78	79	80
81	82	83	84	85	86	87	88	89	90
91	92	93	94	95	96	97	98	99	100