

Cultural Events

Aug. 8
BLOOMFIELD THEATER—"55 Days at Peking," starring Charlton Heston, Ava Gardner and David Niven.
BIRMINGHAM THEATER—"The Longest Day," starring Peter Lawford, Richard Burton and Sal Mineo.
RAVEN GALLERY—A "farewell" exhibition of prints and paintings by Robert Broner is featured at the opening exhibition at the relocated Raven Gallery, 136 Brownell, Birmingham. The show will run through Aug. 24. Regular gallery hours are from 11 a.m. to 1 a.m.
BIRMINGHAM ART CENTER—Holdover of Arts Festival Exhibition at the Birmingham Art Center, 1516 S. Cranbrook Road, Birmingham, until Aug. 18.
BRIDGE—Birmingham Duplicate at the YMCA, 400 E. Lincoln, Birmingham, beginning at 7:45 p.m. Open to the public.
KENILWORTH GALLERY—Showing of paintings by several artists at the Kenilworth Gallery, 165 Pierce, Birmingham.
CRANBROOK GALLERIES—Annual summer show of work by students of the Cranbrook Academy of Art; will run through mid-September. Also, in the Young People's Art Center Galleries, annual student summer show; will run through mid-September. Gallery hours are 2 to 5 p.m. daily except Mondays and major holidays. Admission charge.
INSTITUTE OF SCIENCE—Exhibit of Pre-Historic Mexican civilization and Pre-Columbian architecture at the Cranbrook Institute of Science. Hours are 10 a.m. to 5 p.m. Monday through Friday and 2 to 5 p.m. on weekends. Admission charge. The exhibit will continue through Sept. 8.
LITTLE GALLERY—Exhibit of contemporary Japanese paintings and prints at the Little Gallery, 915 E. Maple, Birmingham. Regular gallery hours are 9 a.m. to 6 p.m. daily except Sundays and Mondays.
Aug. 9
RAVEN GALLERY—"The Topsiders" will entertain at the Raven Gallery, 136 Brownell, Birmingham, beginning at 9 p.m. Admission charge.
WILL-O-WAY—Students of the Will-O-Way Apprentice Theatre will present "Finian's Rainbow" at the theater on Long Lake Road near Telegraph in Bloomfield Hills. Curtain time is 8:40 p.m. Open to the public. Admission charge.
Aug. 10
HOOTENANNY—Weekly Saturday night Hootenanny at the YMCA, 400 E. Lincoln, Birmingham, beginning at 7:30 p.m. Admission charge.
WILL-O-WAY—Students of the Will-O-Way Apprentice Theatre will present "Finian's Rainbow" at the theater on Long Lake Road near Telegraph in Bloomfield Hills. Curtain time is 8:40 p.m. Open to the public.
RAVEN GALLERY—"The Topsiders" will entertain at the Raven Gallery, 136 Brownell, Birmingham, beginning at 9 p.m. Admission charge.
Aug. 11
WILL-O-WAY—Students of the Will-O-Way Apprentice Theatre will present "Finian's Rainbow" at the theater on Long Lake Road near Telegraph in Bloomfield Hills. Curtain time is 8:40 p.m. Open to the public.
RAVEN GALLERY—"The Topsiders" will entertain at the Raven Gallery, 136 Brownell, Birmingham, beginning at 9 p.m. Admission charge.
Aug. 13
FOLK MUSIC—Folk music entertainment at the Birmingham YMCA, 400 E. Lincoln, beginning at 8 p.m. Open to the public. Admission charge.
BRIDGE—Tuesday Birmingham Duplicate at the home of Hilda Murphy, 2424 Manchester, Birmingham, beginning at 1 p.m. Open to the public.
RAVEN GALLERY—The Raven Readers Theater will perform plays by E. M. Broner at the Raven Gallery, 136 Brownell, Birmingham, beginning at 9:30 p.m. Open to the public. Admission charge.
Aug. 14
RAVEN GALLERY—The Raven Readers Theater will perform plays by E. M. Broner at the Raven Gallery, 136 Brownell, Birmingham, beginning at 9:30 p.m. Open to the public. Admission charge.
BRIDGE—The Birmingham-Bloomfield Area Bridge Club at the YMCA, 400 E. Lincoln, Birmingham, beginning at 7:45 p.m. Open to the public.
Aug. 15
RAVEN GALLERY—The Raven Readers Theater will perform plays by E. M. Broner at the Raven Gallery, 136 Brownell, Birmingham, beginning at 9:30 p.m. Open to the public. Admission charge.
BRIDGE—Birmingham Duplicate at the YMCA, 400 E. Lincoln, Birmingham, beginning at 7:45 p.m. Open to the public.
Aug. 17
HOOTENANNY—Weekly Saturday night hootenanny at the YMCA, 400 E. Lincoln, Birmingham, beginning at 7:30 p.m. Open to the public.
Aug. 20
FOLK MUSIC—Folk music entertainment at the Birmingham YMCA, 400 E. Lincoln, beginning at 8 p.m. Open to the public. Admission charge.
BRIDGE—Tuesday Birmingham Duplicate at the home of Hilda Murphy, 2424 Manchester, Birmingham, beginning at 1 p.m. Open to the public.
Aug. 21
BRIDGE—The Birmingham-Bloomfield Area Bridge Club at the YMCA, 400 E. Lincoln, Birmingham, beginning at 7:45 p.m. Open to the public.
Aug. 22
BRIDGE—Birmingham Duplicate at the YMCA, 400 E. Lincoln, Birmingham, beginning at 7:45 p.m. Open to the public.

Ford

(Continued from 1-D)

years, strong-willed, resistant, jealous of his power, erratic. He was strong-willed in his refusal to recognize organized labor. The chapters which deal with the labor strife are filled with violence. He was resistant to change, refusing to adjust his operations to his growth. He was determined to run the huge Ford industry along the same simple lines on which he had operated his first machine shop.

HE WAS obstinate in his belief that the company should belong to the Ford family alone.

He would not delegate power or authority.

He was erratic in his sudden enthusiasms for projects such as the Ferguson tractor and the soy bean industry.

One of the mysteries of his somewhat complex personality was his faith in Harry Bennett, a faith which led to the placement of Bennett above his son Edsel and which almost led to the seizure of the company by Bennett.

NEVINS HAS dealt kindly and adroitly with this phase of Ford's life. He has kept ever before the reader the realization that time moved too fast for Mr. Ford and the demands of a changing world overwhelmed him.

He never lets the reader forget Ford's genius. "He read engines like other men read books," he tells us. "He had an intuition that enabled him to see the result without going through the processes."

IT WOULD BE difficult to sort out the most interesting chapters of the book. Events themselves were interesting in themselves when they are highlighted and interpreted in Nevins' fast-shooting prose they become absorbing.

The rescue of the Ford Motor Co. from Bennett, a tense tale which reaches a dramatic climax in the burning of a codicil which would have made him king of the empires is told with suspense.

The account of Willow Run's birth and the problems of equipping a factory in wartime shortages; of recruiting personnel in a dearth of man-power; of moving swiftly but with precision is particularly well done.

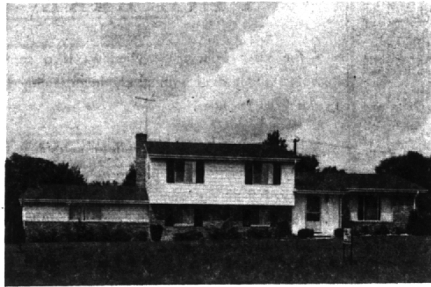
EDSEL FORD emerges from his understanding pen as a man in touch with the times, eager to accept and incorporate social and economic changes but a man who was thwarted by a modern Marchivelli, Harry Bennett, and as a man misunderstood, underrated and deposed by his father, Henry.

The rescue of the Ford Co. which was crumbling from antiquated management and the determined tough-mindedness of Henry Ford II in accomplishing this task is another well-told story. The arrival of the Quiz Kids, who preferred the title Wild Kids is recounted with insight and humor.

LABOR troubles, NRA troubles, pre-war and post-war troubles abroad, the decentralization of the huge Ford Motor industry, the dramatic day when Ford stock was placed on the market and eager buyers could become part of the new energetic Ford empire; these are some of the stories reported with depth, authority, skill and a sense of the dramatic.

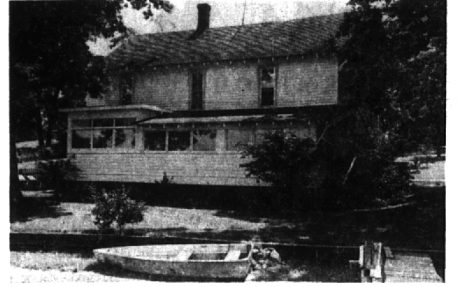
"FORD" IS AN interesting book but it is also a scholarly one. A student of industrial history would find it invaluable. It is completely annotated. It is authoritative.

COUNTRY TRI-LEVEL



4 BEDROOMS—Large Site in lovely Dorchester Hills. Well constructed house of Brick and lifetime Aluminum siding.
 Large Paneled Family room with fireplace. Living room. Dining room.
2½ Baths. 2½-car finished Garage. Kitchen with GE built-ins. Marble sills. Aluminum windows. Extra wide drive with turn-around.
 Country Living with easy access to City facilities. The best of both worlds — for \$31,900.

PINE LAKE



SUMMER & WINTER FUN—one of the better lakes for swimming, small boating, water skiing and skating in winter.
 Large (24x26) paneled Living room with fireplace. Paneled Dining room. Kitchen with good eating space.
4 BEDROOMS — 1½ Baths. Acoustic ceilings. Rowboat — Raft — 3½ HP motor included. Outdoor Brick grill. Huge glazed Porch with VIEW! Blacktop drive. Lake pump.
 Lots of room for an active, happy family. \$34,500.

SNYDER KINNEY & BENNETT
 INC.
Realtors

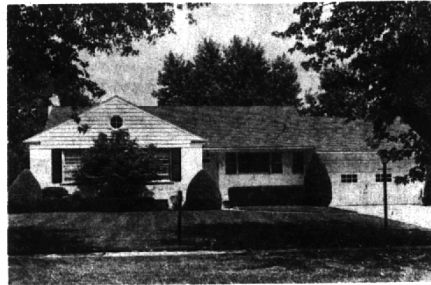
32740 Franklin,

MA 6-9600

239 S. Woodward,

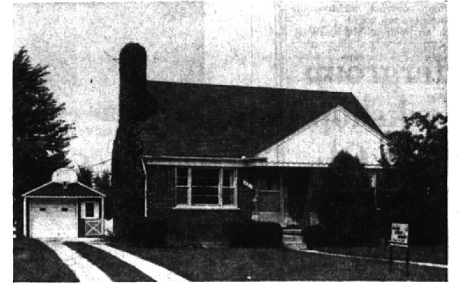
MI 4-7000

PRIME CITY AREA



PRETTY AS THE PICTURE—On shady, charming Larchlea—quiet but close to all City conveniences. Very friendly area.
27-foot Living-Dining room with fireplace.
3 Bedrooms. 2½ Baths.
Huge Screened Porch on east side.
Outstanding Recreation room with hand-rubbed paneling with gas-fired grate in fireplace.
Ultra-modern Stainless Steel Kitchen.
 Carpeting. Draperies. Porch rug.
Superior condition. Interior just repainted. Exterior painted last year. **YOU'LL LOVE THIS.** Only \$31,900.

LITTLE GEM



NOT SO LITTLE EITHER! Wonderful City location for young families. Sturdy Brick 1½-story with full Basement.
Good-sized Living room with fireplace.
Off-set Dining room.
2 Bedrooms on 1st floor. Large well-finished 3rd Bedroom on 2nd.
NEW CARPETING.
 Fenced yard for children to play in safely.
LARGE FHA MORTGAGE CAN BE ASSUMED!
QUICK POSSESSION! Priced at \$17,500.

Local Best Sellers

Fiction
ELIZABETH APPLETON—John O'Hara
SHOES OF THE FISHERMAN—Morris L. West
JOY IN THE MORNING—Betty Smith
CRANBROOK BOASTS A GHOST—Thistle
Nonfiction
TERRIBLE SWIFT SWORD—Bruce Catton
MY DARLING CLEMENTINE—Jack Fishman
PORTRAIT OF MYSELF—Margaret Bourke-White

Plays

(Continued from 1-D)

been produced by the WSU Theater and was performed during this spring's Detroit Arts Festival. She is the wife of artist Robert Broner, whose one-man show will remain at the Raven through Aug. 24. The Broners, with their four children, will move to New York in September. Broner will begin teaching this fall at New York Community College.

The Birmingham Eccentric classified ads get quick results because they're set in easy-to-read type and reach over 70% of the Birmingham-Bloomfield area. Place a Want Ad yourself in the Eccentric's busy Classified Supermarket. Dial Midwest 4-1100 for fast results.



SMALL FAMILIES—Here's a delightful custom built ranch on a shaded corner site just a block from private beach facilities on WING LAKE. Two nice bedrooms, relaxing den, cheery kitchen with breakfast space, and att. 2 car garage. **IMMACULATE!** \$25,900.



REFRESHING—With a small pond to accent the professional landscaping, this modern bi-level has 4 cheery bedrooms, 3 sparkling tile baths, "square-dance" size family room, large hobby-recreation area, 2 fireplaces, and att. 2 car garage. **SOLID VALUE!** \$37,900.



RAVINE SITE—Not visible from the front of this attractive Quad-level home is the pretty, wooded valley at the rear. **FOUR TWIN BEDROOMS,** beamed ceiling family room plus exposed, paneled recreation room, 2 sparkling tile baths plus 2 lavs., 3 fireplaces, and att. 2 car garage. **LUXURY LIFE!** \$49,900.



BEVERLY HILLS—Beautifully landscaped and enjoying a 100 ft. site, this impressive brick ranch has that hard-to-find first floor family room. 3 excellent bedrooms, huge living-dining room, airy screened porch, and full basement. **CONVENIENT.** \$27,900.

HALL & YOUNG

REALTORS

INC.

"Twin offices"
BIRMINGHAM 345 S. Woodward MI 6-7900
BLOOMFIELD 4114 W. Maple MA 6-5900
OPEN TILL 9 P.M.

Showcase of homes

"Showcase" features each home listed with Hall & Young in lighted photos and color slides. **RESULT**—more effective sales exposure for sellers and easier selection for buyers.

Colonial Communities

CONCORD GREEN
 EAST GREENWICH GREEN
 WEST GREENWICH GREEN
 NOW—METAMORA GREEN—

Wm. J. PULTE, Inc.

MASTER BUILDERS
 BIRMINGHAM
 MI. 6-0105

PULTE • BULLY • MEANS • BETTER • BUILT