

BRIDGE

in BIRMINGHAM

By RUD MAYBAUM
Southern Michigan
Bridge Association

Jane Ford, who is a usual player in Birmingham tournaments, held today's interesting hand and displayed why she is usually a winner. Being vulnerable against non-vulnerable opponents, makes this bid of Jane's all the more daring.

This hand is also a good lesson on what can happen when one opens the bidding too lightly—how to handle a re-bid or what to do over partner's double. Most bridge players call this opening "garbage."

North and South vulnerable:
Dealer is West

- NORTH**
 ♠ 4 3 2
 ♥ 9 8 7 6 2
 ♦ A Q
 ♣ K J 10
- EAST**
 ♠ A 9 6
 ♥ A J 4
 ♦ K J
 ♣ A 9 7 6 4
- SOUTH (Jane Ford)**
 ♠ 10 7 5
 ♥ void
 ♦ 8 7 6 5 4 3 2
 ♣ Q 5

The bidding: West North East South
 1 ♠ pass 2 ♠ 3 ♣
 pass pass 4♣ all pass
 Opening lead: K ♠
 West's hand was not strong enough to open the bidding, but once it was opened, a warning should have been given the partner, and a re-bid of hearts over the double is the suggested bid.

Had West failed to open the bidding, they would arrive at a four heart contract or even a three no-trump contract, which would have been the top board.

With an opening bid by West.

Intergroup Workshop Set at OU

A five day Institute on Intergroup Relations is scheduled to start at Oakland University Monday focusing on ways of reducing conflicts between groups and individuals in relation to today's changing urban and suburban communities.

The second such Institute co-sponsored by the University's Division of Continuing Education and the Michigan Region, National Conference of Christian and Jews, it will be open to adults serving with PTA's, neighborhood groups, social agencies, religious and youth-serving organizations, schools and government.

Registrations should be made in advance by telephoning Oakland University.

IN DAILY 9 a.m. to 3:30 p.m. sessions, leaders in the field of human relations will discuss such currently lively issues as areas of tension, group dynamics and emotional aspects of prejudice.

Dr. Robert M. Frisvold, executive director of the Detroit Round Table of the National Conference of Christians and Jews will keynote the week's program with an opening talk on "Areas of Tension and Concern."

DURING THE first afternoon session, Dr. Alvin Zander, director of the Research Center for Group Dynamics and professor of psychology at the University of Michigan, will give a presentation on "Group Dynamics," followed by a demonstration.

Dr. Mel Ravitz, associate professor of sociology and anthropology at Wayne State University, and the Detroit Councilman currently co-sponsoring a proposed open occupancy ordinance, will talk on "Community Structure and Changing Suburbia" Tuesday morning.

That same afternoon Mary E. Brand, assistant director of the Human Relations Program of the Detroit Public Schools will demonstrate a film showing techniques she has used in many human relations workshops for teachers.

"THE EMOTIONAL Aspects of Prejudice" will be the Wednesday morning topic of Ivor Echols, head of the school-age laboratory at the Merrill-Palmer Institute.

He will be followed by Dr. Abraham Citron leading a discussion on "Answering Anti-Minority Remarks." Citron is director, Michigan area, American Jewish Committee.

Thursday's program will feature Dr. William Wattenberg, professor of educational psychology, Wayne State University, will lead an all day session focusing on "Attitudes and Conducts of Today's Youth."

ESTHER L. Middlewood, chief, Mental Health Education, Michigan Department of Mental Health, will climax the week's exploration of intergroup problems with a discussion of "Rediscovery of Moral and Spiritual Values." The final session will be held Aug. 16.

John Turmala and William Axler; Dr. Harold Barron and Dottie Barron; Dr. E. Kopple and George Alderton III.

I ATTENDED the Summer Resort Bridge Tournament in Cleveland and it was a huge success, both from the standpoint of bridge and as a vacation land.

The next close such tournament will be held at Greenbush Inn, Greenbush, Mich., Aug. 31 through 35. They have a beautiful beach, a great heated pool, fishing and boating. The children have a lovely time and you, too, can enjoy a week or summer resort fun. Will be glad to furnish complete details upon request.

BRIDGE WILL START with a bang this early fall. The Regional (red point) tournament will be held at Pittsburgh, Aug. 30 through Labor Day. The following week end will be the Sectional Tournament at Windsor and the following week end will be our Southern Michigan Tournament at Pontiac.

The Southern Michigan Bridge Association's Winners Game for August will be held at the St. Clair Shores Recreation building in St. Clair Shores, this Sunday at 6:30 p.m. All of you who are qualified are welcome. Some of you old timers may remember the building as the former "Blossom-Heath."

RECENT WINNERS in Birmingham tournaments include: Betty Pope and Phyllis Malstrom; Father Clarke and Hilda Murphy; Evelyn Smith and Ollie Swartzwalder; Charles Thumer and Steve Taylor; Fran Greenhaigh and Pat Holloway; Barbara Madvin and Roz Holt; Dave Cooper and Ira Benjamin; Mary Matchie and Edwin V. Clarke; Adelaide Westrate and Isabel Guterman; Shirley Campbell and Jen Heugh; Dr. and Mrs. Walker; E. and C. Dunn; Grace Diatler and Joan Miller;

PINE LAKE

The view from these windows is a sparkling water wonderland with shady lawn, sandy beach and boat facilities.

The gracious home has all large rooms, living room with cutstone fireplace, family room and a library, full dining room, four huge bedrooms plus maid's quarters. Three baths and a powder room. Four car garage.

Only one of its kind, so see it today!

\$55,000



3175 Interlaken



Lighting your way to better living

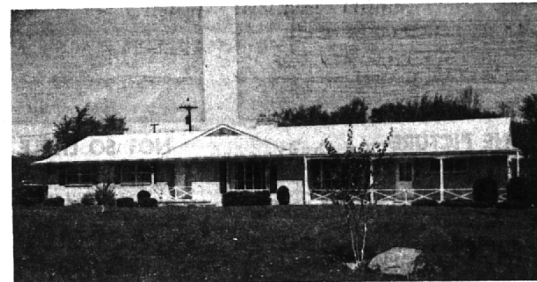
BENJAMIN & BISHOP, INC. REALTORS

259 S. Woodward, Birmingham, Michigan

MI 4-3232 — JO 4-5728



Custom "Eastover" Home



Large Executive ranch with 33-ft. living room. 20-ft. beamed ceiling, family room, warmly paneled in cherry and featuring a lovely raised hearth fireplace. Built-in appliances and unmarked carpeting and draperies throughout. 3 sizeable bedrooms, 2 1/2 baths, and a superb location in the Bloomfield Hills School system. Call for your appt TODAY. \$32,900.

Big Stately, Trees—Stream



All the charm of New England is brought to effect in this very good sized family home. Located in Woodcreek Farms on a dramatic 2 acre site, surrounded with big, stately trees. 3 bedrooms, 2 full baths, and finished activities room in the walk-out lower level. Call today. Just \$36,500 and the new carpeting is included.

Quarton Lake Estates

4 BEDROOMS

\$32,500

Gracious all brick center entrance home. 4 magnificent bedrooms (26-ft. master bedroom suite with adjoining bath). 2 full baths and 1st floor lav. 26-ft. living room. 3 fireplaces, lovely large kitchen incl. separate breakfast nook. A beautiful stately home close to schools, shopping and transportation. Only \$32,500.

Wing Lake School—4 Bedrooms



Almost new, stately colonial surrounded with mature oaks. 2 1/2 baths and separate dining room. 18-ft. fire-placed family room. Lovely bright kitchen with eating area and built-in dishwasher, oven and range. Full basement. 2 1/2 car att garage. Gas heat—\$32,500.

4 "Big" Bedrooms—Beverly Hills



What you can't see from the picture is the "big-wing" on the back of this lovely home. All 4 bedrooms have nice closet space, and there is a Library as well as a finished Recreation Room. Nicely carpeted, drapes, and immediate possession! Over 1,800 square feet plus an oversized garage. \$27,600.

Chamberlain Co.
Realtors

MI 6-6000
JO 4-6000

975 S. HUNTER BLVD.
BIRMINGHAM