



Have you, during the past week, "gone out of your way" to speak kindly to another . . . to perform some little bit of good that helps another . . . to make a gift of money or some other helpful object, without revealing your identity? Have you done anything kind above? If you have, your reward is an "inner one"; your head and your heart have been "lifted up." A living, yet intangible, evaluation is yours!

## This and That

by George R. Averill

Some reports coming from European areas where President Kennedy received great public acclaim on his recent trip point out that much of the handclapping and shouting was merely the emotional gesture of the moment. It is suggested that the public's reaction most always is born of emotion—and when that sound is borne away on the air it is up to the leaders in those countries to determine the course of action that follows. It reminds us that the public has a short memory; that it is fickle, capricious, responsive generally to the philanthropist—only later "to bite the hand that feeds one." Something like baseball. Even a home-run king, if he fails to get plenty of long hits, receives the boos and catcalls of the grandstand and the bleachers. Alas! "twere all ways and always just about so."

There is a meaningful phrase that is often used by folks; it is: "I hate him, her, or them." Isn't this phrase used, for the most part, in a thoughtless manner? For to use it as above written is to personify the thing hated . . . while, instead, are not the words and acts that one "hates" the real objects of one's criticism? You can like and enjoy a person, yet be critical of some facet he manifests.

This here secretary of the interior, Stuart Udall, certainly wants to take over a lot of U. S. lands for park purposes, including the Michigan Sleeping Bear dunes areas. Now he wants Kennedy to seek over a billion dollars to build a hydroelectric plant at the Passaic maquamoddy Dam, started by the late FDR, and then abandoned as impractical. (What's a billion here? See THIS AND THAT, 6-A)

## Eleanor Roosevelt Tribute Accepted By Mrs. Halsted

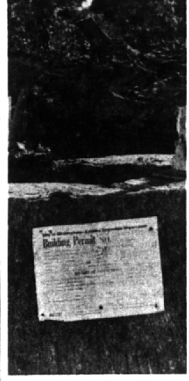
Mrs. James A. Halsted of Birmingham, the former Anna Roosevelt, will accept a memorial tribute Wednesday to her mother, the late Eleanor Roosevelt, during the national convention of Pioneer Women at the Statler Hilton in Detroit.

A scroll and plaque dedicating a wing of the Tiberias Vocational School of Pioneer Women to the memory of Mrs. Roosevelt will be given to Mrs. Halsted. The plaque will later be placed in the school in Israel.

AMONG THE national and international figures scheduled to speak during the convention are New York Congressman O. P. S. Reid, former U. S. ambassador to Israel, and Mrs. Beha Idelson, deputy speaker of the Israeli Parliament.

Gov. George Romney will also address the convention of American and Canadian women.

Pioneer Women, along with its sister organization in Israel, provide almost half of the social services for women and children in that country.



Permit No. 18963

Yes, that's a building permit that stumps at Townsend and Pierce in Birmingham; but it's not for a bird house. It's a permit "to wreck a frame residence" at 444 Pierce. It was issued July 1 to Barber Construction Co., Bloomfield Hills. The house was removed to make room for a retail business store.

## Road Repair Bid Accepted In Beverly

BEVERLY HILLS—A low bid of \$41,895.85 by the Ann Arbor Construction Co. for road repairs in the village was accepted by the council Monday. Bids ranged from this figure to \$50,000.

The roads to be repaired are Eastfield, from 14 Mile Road to 100 feet south of Smallwood; Birchwood, from Pierce to Bathes, west of Bates and from Greenfield to Madison; and Bates from 14 Mile to Beechwood.

Also Birmingham, from Beechwood to Locherite; Marguerite west of Swarthill; 13 Mile at the Lahser intersection; Warwick, from Norchester to Bedford; Kinross, west of Madison; Madeline, east of Pierce; and Buckingham, from Greenfield to Madison.

Miscellaneous repairs will be made on Warwick at Englewood; Englewood at Beverly Road; Kinross at Southfield; Bedford at Warwick; and Sheridan at Amberst.

Construction will start Sept. 1 and will take approximately 60 days.

IN OTHER business, Councilman Edward M. Sharlett, chairman of the Road Safety Commission, urgently requested changes in the traffic light at Beverly Road, Riverside and Southfield be put on full-time operation.

His reasons were that within a few weeks traffic on Southfield will be increased due to the opening of the wider road south of 13 Mile, and since the light was installed the number of houses has increased, plus increased traffic from Medical Village, the Beverly Hills Athletic Club and the Wrigley Supermarket.

He also requested the change because a new branch of the Metropolitan Federal Savings and Loan Association will be built soon at 14 Mile and Southfield.

## Study Recreation In Area of City

By LARRY EVOE  
City Editor

The Birmingham Plan Board has asked the city commission to consider the possibility of acquiring property for recreational use in the east central part of the city.

The area, which is generally bounded by Adams and Woodward on the west, Maple on the north, Eton and the city limits on the east and 14 Mile on the south, is lacking neighborhood park facilities, according to the plan board report.

Although the report states that Torry School and Eton Park community facilities are in this neighborhood, the area has no recreational facilities

## Hills Adding 3 Rooms to Hickory Grove

Construction of a three-room addition to Hickory Grove School began this week, according to Bloomfield Hills School Supt. Eugene Johnson.

The addition will not be finished by the opening of school in September, according to Johnson, but will be available within 30 days thereafter.

"Even with the addition, we still will be at the saturation point in elementary school facilities if we are to maintain an average of 25 children per classroom," Johnson said.

CONTRACTS FOR the school addition were awarded late in June. Total cost is \$63,714, of which the Bloomfield Hills School District will pay two-thirds.

Since one of the classrooms will serve as a special education room under control of Oakland County Board of Education, the county is furnishing \$21,000 toward the addition.

Paving of a parking lot for school buses, the first of a three-step program for providing maintenance facilities for buses, is also being completed this summer. Contract award, to Ajax Asphalt Co., was for \$19,033.

The area will be fenced and lighted, and initial plumbing for a future building is to be installed. Total cost of the initial step is \$20,131.

A REQUEST to rezone this property from its present two-family, R-4 classification to a multiple-family, R-7 classification was denied by commissioners Monday night. The petitioner, the Lincoln Construction Co., was seeking commission approval to construct apartment units on the property.

Brownfield estimated the property at \$35,000. The value would cost around \$35,000.

Commissioner Carl F. Ingraham asked Brownfield if the vacant land along Adams Road near the first station and an A&P store could be used for recreational facilities.

Brownfield said he believed the cost of the property would be too great and the general nature of the area would not be best suited for recreational purposes.

## Store Manager Foils A Bungling Bandit

A comedy of errors and circumstances left a bandit bewildered and a "job" slightly less lucrative than it might have been.

A gunman entered the Crocker Candy Store at 2440 Woodward, Bloomfield Township, at 9 p.m. Saturday, just as its manager, Mrs. Jean Willis of Pontiac, was closing up.

HE DEMANDED THAT she empty the cash register (it yielded about \$100) and then forced her to go through drawers in a back room, thinking more money might be kept there.

However, as she was opening one of the drawers, Mrs. Willis spotted a pistol (unloaded) which she pointed at the bandit telling him she'd shoot if he fled.

Amazed, the man fled.

## Comments from... CLASSIFIED



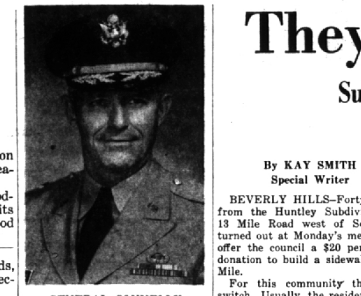
You're Barking Up Right Tree

When you use The Eccentric Classified columns to advertise your dog, cat or anything else you wish to sell. This advertiser stated, "Had excellent results; the first person who came out bought my poodle, we disappointed others."

POODLE, TOY, FEMALE, WHITE with cream. AKC registered. 18 months old. Permanent show. Good disposition. MI 6-0000. (22-24)

Why don't you see for yourself what an inexpensive 15-word ad will do for you. It's so easy; just call MI 4-1100 and ask for the classified department.

The Birmingham Eccentric Classified Ads CALL MIDWEST 4-1100



GENERAL CONNELLY

## Hills Resident Commander of Reserve Unit

Brig. Gen. Stanley W. Connelly, 5357 Van Ness Court, Bloomfield Hills, has assumed command of the 70th Division (Training), an Army reserve unit with headquarters at Fort Wayne, Detroit.

Gen. Connelly, 50, a 1957 graduate of the U. S. Military Academy, succeeds Maj. Gen. Beryl J. Pace who left the command position to accept a State Department assignment. Brig. Gen. H. L. Harris, assistant division commander, served as acting division commander until Gen. Connelly's appointment.

GEN. CONNELLY, married and the father of four children, is employed as chief of the Surface Equipment Contract Division, U.S. Army Mobility Command, Center Line.

He served in the Regular Army following his graduation from West Point in 1937 until he resigned in 1964 to enter private industry (Gen. Connelly received his MA degree from Massachusetts Institute of Technology in 1940).

Gen. Connelly's military assignments included assistant chief of staff, U.S. Forces in Middle East; assistant military attaché, Sweden, and associate professor of ordnance, West Point. His decorations include the Legion of Merit and the Oak Leaf Cluster.

The 70th Division is a reserve training unit covering Michigan and Indiana.

## They Want Sidewalk Subdivision Residents Make Offer To Donate \$20 Per Family

to give the children "snow shovels for Christmas."

IN OTHER business, Robinson Brothers, developers, requested the council to rezone 24.5 acres on 13 Mile west of Southfield for multiple zone use, for construction of 12 two-story units per acre for a total of 234 dwelling units.

The petition was sent to the planning board for study and recommendation. Councilman John Magee requested that he be put on record as voting "No" to sending the petition to the planning board.

Some 50 residents of Nottingham Forest Subdivision signed a petition requesting Craftsman Construction Co., developers of a plat adjacent to Nottingham Forest, to change the proposed name from Nottingham Woods to some title not using the word "Nottingham."

The council recommended the planning board that they firmly suggest a change in name.

JACK ANDREWS of Andrews and Briggs, developers, also appeared before the council to request action on a plat they submitted some months ago for Nottingham No. 5, between 13 and 14 Mile and adjacent to the present subdivision.

The planning board suggested that approval be held up until Johnson and Anderson, village engineers, come up with plans and specifications on storm drainage. The plat was again tabled at the July 25 meeting of the board, pending adequate answers for Johnson and Anderson.

Andrews said they would not be able to start construction this fall as answers are not forthcoming.

## Franklin Council Acts on Bids for Paving of Roads

A CHANGE in the formula for payment of fees for inspection to Johnson and Anderson was authorized. The new rate is \$60 per day for each full day of inspection and contracts must contain bids for inspection, the money to be placed in escrow in the village office.

An increase in fees was also authorized for the GCW Disposal Service, in the amount of \$89.79 per month, as a result of 219 additional units having been added.

Johnson and Anderson's recommendation on water mains for the Georgetown Green Subdivision, which will be put in by the developer, William J. Pulte, at a cost of \$21,027, was referred to the water commission.

FRANKLIN VILLAGE Council took three steps concerning soil cement bids at a special meeting Monday. Bids were acceptable until noon Friday; the special meeting was conducted to evaluate them and award the soil cement contract.

Roads that will be covered are in the area of Wellington from Franklin to Scenic and Scenic from Wellington to Franklin.

Only one bid was turned in; however, the Council rejected it because of the provisions included. These provisions were made because the specifications were unsatisfactory to prospective bidders.

AFTER THE BID was rejected, new specifications written Sunday and Monday were approved by the Council.

These were presented to three known contractors who do this type of work and notices of the new bidding were posted.

New bids were taken by the Village Clerk Wednesday at 8 p.m. They were submitted to the Council at 8:30 p.m.

## New Golf Course, New Pickup Truck

City commissioners awarded a contract Monday night for the purchase of a new pickup truck for use at Birmingham's new municipal golf course.

The truck, which will be used for transportation, light hauling and maintenance at the course, will be purchased from Harold Turner, Inc., for \$24,010. Delivery is expected in three to four weeks.

for a distinctive and lovely bedroom . . .

our new

# Plymouth Rock Maple

in White with Wedgwood Blue trim!

**SPINDLE BED**  
double or twin size \$49.95

**3-drawer LOW CHEST**  
\$59.95

Our initial showing of this exquisite collection that incorporates all the quaintness and charm of Early American! Decorated in gleaming, satin-smooth white and hand-trimmed in rich Wedgwood blue. And tops are of matching mar-proof white plastic. All drawers are individually fitted, with specially finished interiors to insure safe storage for even the finest of lingerie. Now on display at our Bloomfield store and available for prompt delivery.

FOUR POSTER BED with Canopy Frame . . . \$ 99.75

DOUBLE DRESSER & FRAMED MIRROR . . . \$119.75

NIGHT STAND . . . \$ 39.50

BLOOMFIELD STORE OPEN MONDAY, THURSDAY & FRIDAY TIL 9 • CONVENIENT FREE PARKING

## Zoning Talk

Commissioner Ralph A. Main (left) and Birmingham City Planner William R. Brownfield check a city zoning map as they discuss a series of proposed zoning changes in the Maple, Eton, Yosemite and Villa area. The

petitioner, the Lincoln Construction Co., has sought an R-7 classification on the property so they could build a group of apartment buildings on the land. Commissioners denied all of the petitions. (See story, 1-A.)