



Discriminating Diners prefer...

Corning's

Incomparable Cuisine, prepared in European and American manner with the personal attention of...

Nino T. Ambrosiano

famous host from Coast to Coast and the Continent

SPECIAL BRUNCH

Sundays 11 a.m. to 2 p.m.

Nino at Corning's

Woodward South of 13 Mile LI 9-2852 Open Sundays

Michigan Life Reports Gains For Half Year

Michigan Life Insurance Co. reported the greatest growth in the history of the company for the first six months of 1963.

The Royal Oak company's insurance in force increased 12 per cent, moving from \$564,280,000 at the end of 1962 to \$633,496,000, announced John E. Mellen, president, of 642 Pilgrim, Birmingham. "This growth is nine times greater than that achieved during the first six months of last year," he said.

Mellen pointed out a record net operating gain of almost 23 per cent in the same period in 1962. Comparison figures are \$79,646 in 1962 and \$198,367 in 1963.

PREMIUM INCOME increased nearly \$1,000,000 to \$7,774,000 in the first half of this year, compared to the similar period of last year.

Michigan Life's new business issued from January through June was \$22,500,000, compared to \$10,466,000 in 1962's similar period, an increase of more than 114 per cent. Insurance in force rose from \$7,708,000 to \$69,218,000 during the comparison period.

Mellen said ordinary life insurance sales were up 41 per cent. Individual accident and health premiums increased 37 per cent, new group and franchise premiums increased 182 per cent.

Behind The Store Fronts

With ANGUS McKELLAR

Today marks the opening of Kay Baum's brand-new Grosjean Pointe store at 1862 Kerkval. This first additional unit of Kay Baum's will offer the same type merchandise and services as the Birmingham store, which came here in 1959.

... and 8:30 this evening sees the grand opening of the Raven Gallery, 136 Brownell St. Their old Northwestern Hwy. location in Detroit has been closed to expand the new Raven Gallery into a larger combination art gallery and restaurant.

Luncheons will be served daily from 11 a.m. to 2 p.m.; tea will be offered from 2 to 5 p.m., and the dinner hour from 5:30 to 9 p.m. The evening activities will be scheduled after 9 p.m.

Herbert Cohn is owner and art director. Harold Schreier is in charge of restaurant and entertainment activities.

Thane Danby is one of those plant experts on the staff of the McClellan-Ball Co., who is able to glance at a pesky weed, identify it and suggest how to clobber it.

He was able recently to study nature and geography a bit more closely, and helping him was his wife, Florence (who is a part-time employee of The Birmingham Eccentric's bindery department), and their four children.

The Danbys took off for the Yellowstone Park country in a 14-foot aluminum trailer via the South Dakota Badlands, a route which included, of course, a stop at the famed Mt. Rushmore monuments.

The family had a ball camping and fishing at Yellowstone and returned through Montana and the North Dakota Badlands, covering some 4,200 miles.

The Danbys have a rather unique

arrangements with two other families in that each of the three families owns a third of the trailer, thus easing the financial burden of a major capital investment.

"It would not have been practical for us to invest in a trailer by ourselves," Danby said.

"But this way we can make trips that otherwise would not be possible. And there has never been any difficulty in working out schedules with the other two families."

Paul Garley of Poly Clean, 327 Hamilton, tells us that his dry cleaning business will be closed Aug. 11 to 25 in order that all employees may have a vacation.

Corvair owners will be interested to know that Patterson Chevrolet has expanded its bump shop at 2305 Cole St. to include the servicing of Corvairs exclusively.

(The location is 2 1/2 blocks east of Adams, just 1/2 block east of Eton. Cole runs east, west, a block north of Lincoln.)

According to Chuck Patterson, the auto agency's vice president and general manager, the new service center will provide faster service and greater convenience for Corvair owners.

Five new service technicians have been added, making a total of 27 mechanics and bump men now employed by Patterson Chevrolet.

Chuck Curtis is manager of the new service facility, and Phil Fry is assistant. All other car models besides Corvair will continue to be serviced at the main dealer service center at 1000 S. Woodward.

LUNCHEON SPECIALS

Monday thru Saturday — 1/2 YOUNG BAR-B-Q CHICKEN Delightfully Seasoned 95c

Lean BAR-B-Q SPARE RIBS Tangiest Sauce Ever! 1.25

Fresh BAR-B-Q PORK ROLL Marinated in Tangy Sauce 95c

All of our specialties are famous Golden French Fries

BAR-B-Q KITCHENS OF BIRMINGHAM

The World's Most Delicious Carry-Out Food

Drop in or phone for a complete menu!

1066 S. Adams Rd., 1 Door North of Lincoln

Phone 647-1031

Open 7 days a week 'til 9 p.m.

Uncle John's Salad Days are here again...

Crisp, Mixed Greens, Sliced Tomatoes, Ham and Cheese Julienne, Egg Slices with Aunt Sonya's Dressing.

Sundaes & Milk Shakes

... and, of course... "The World's Finest Pancakes" at...



PANCAKE HOUSE

14 1/2 Mile Road MI 4-2727 And Woodward Birmingham

Ad Agency Official Speaks at Seminar

Bruce Unwin, vice president and associate creative director of MacManus, John & Adams Inc., advertising agency, spoke this week at a workshop in Chicago.

Unwin, who lives at 4725 Tully Road, Bloomfield Township, told the advertising people, "In too many cases advertisements use models who actually intrude on the message that the ad is trying to get

across. If more advertising art situations were built around real people related to the central idea, we would have better advertisements."

The University of Michigan was the first U. S. institution of higher education to build a men students' social building on a large scale, the Michigan Union, in 1919.

Van Dyke DRIVE-IN THEATRE

N. of 12 Mile Rd. SL 8-1313

OPEN 6:00—SHOW AT DUSK—KIDS FREE!



2ND BIG HIT! ELVIS PRESLEY in "BLUE HAWAII"

Kentucky Fried Chicken

At its Finger-Lickin' BEST FOR PICNICS, PARTIES AT THE BEACH, or ON YOUR NEXT FISHING TRIP... THE BUCKET

For 4 to 6 People... 3.75

15 pieces of Chicken, Flat of Gravy and 20 Biscuits.

RALDA'S RESTAURANT EL 6-7566

10 MILE & TELEGRAPH ROAD

CALL US NOW For GUARANTEED SERVICE

DO NOT WAIT UNTIL FALL To have your Hi-Fi put in top condition for Winter—CALL US NOW!

DO NOT WAIT UNTIL FALL To have the TV set in the living room or family room reconditioned for fall and winter—CALL US NOW!

We service all makes and models. Written Guarantee With All Jobs!

McCallum & Dean

RADIO—TELEVISION—HIGH FIDELITY COMPONENTS "Serving the Birmingham Area Since 1945!"

Closed at 1 P.M. Wednesdays — Open Friday Evenings 'til 9 P.M.

409-11 East Maple Birmingham MI 4-5230

Carrie Lee's

Our Specialty is Almond Chicken Lobster Cantonese

Chinese and American Food Exotic and Delightful Cantonese Family Style Dinners CHILDREN'S ORDERS SERVED

Special Attention Given to Carry-Out Service Enjoy our Chop Sueys and Chow Meins leisurely in your own home.

Reservations accepted Call Midwest 4-9623 Midwest 4-7576

Open 11 a.m. to 10:30 p.m. daily Saturdays 11 a.m. to 11 p.m.

856 North Woodward Birmingham

BIRMINGHAM

Birmingham, Mich. - Midwest 4-3533 - A United Detroit Theatre

AIR CONDITIONING NOW SHOWING

THE INTERNATIONALLY ACCLAIMED HIT! DARRYL F. ZANUCK'S THE LONGEST DAY WITH 48 INTERNATIONAL STARS!

—PERFORMANCE SCHEDULES— MONDAY THRU FRIDAY DOORS OPEN 7:30 P.M.—STARTS 8:10 P.M.

SATURDAY & SUNDAY DOORS OPEN 1:45 P.M. PROGRAM STARTS 2:00 P.M.—5:25 P.M.—8:50 P.M.

DELIVERY SERVICE
OVEN HEATED TO YOUR DOOR
8 P.M. to 1 A.M. Sunday Thru Thursday
8 P.M. to 2:30 A.M. Friday and Saturday

PIZZA — SPAGHETTI — LASAGNA — RAVIOLI — FROG LEGS
SHRIMP — FISH & CHIPS — BAR-B-Q RIBS — BAR-B-Q CHICKEN
FULL COURSE DINNERS SERVED IN OUR DINING ROOM

CALL US 9-4002

PASQUALE'S
RESTAURANT AND PIZZERIA
3808 N. WOODWARD — 3 Blks. N. of 13 Mile Rd.

The Pagoda
Restaurant and Cocktail Lounge
Luncheons • Dinners • Smorgasbord
Catering to Banquets, Weddings and Private Meetings...
Entertainment Tuesday thru Saturday Evenings
Maple Road, Clawson
2 Miles East of Birmingham
JU 8-7373

Machus Presents
Gracious Dining Without Extravagance
DINNER SPECIAL
STUFFED CABBAGE ROLL
Choice of Vegetable & Salad
Machus Roll & Butter
\$1.35
"MEMO TO DAD" Have Dinner at Machus While the Family's Away

Restaurant Pastry Shop
160 West Maple MI 4-1016
8:30 a.m. to 8:00 p.m.

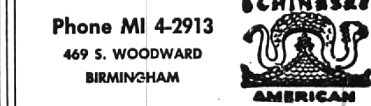
Chinese AND American Foods

Pearl's Garden

OPEN 7 DAYS A WEEK
11 A.M. to 10 P.M.

LUNCHEONS DINNERS 75c up 1.25 up
FAMILY DINNERS PRIVATE PARTIES
Chinatown Style Welcomed
CARRY OUT ORDERS

Phone MI 4-2913
469 S. WOODWARD BIRMINGHAM



Now! It's aloha-time at HAWAIIAN GARDENS

- LUNCHEON AND DINNERS SERVED DAILY, including our popular Sunday Polynesian Family Buffet (\$2.95 adults, \$1.50 children)
- HAWAIIAN FLOOR SHOW NIGHTLY (except Sun. and Mon.) with Lyle Carby's Orchestra for your dancing pleasure
- LUAU FEAST EVERY SATURDAY NIGHT with floor show, dancing and all you can eat—\$4.95 per person.
- IMPERIAL DINNERS served nightly in Michigan's only authentic SUKIYAKI TEA HOUSES.

Near Holly, Michigan
4801 Grange Hall Rd.
on U. S. 10 at Interstate 75
Reservations, ME1800 7-1871

Ted's SUNDAY BREAKFAST BUFFET

a delightful way to enjoy your Sunday morning breakfast...

SAUSAGES, SCRAMBLED EGGS
SILVER DOLLAR PANCAKES
JUICE, SWEET ROLLS
TOAST, BEVERAGE, ETC.

Woodward at Square Lake Rd.
Bloomfield Hills

Visit the Scots Dining Room, Garden Court Cafeteria at the Pontiac Mall

Uncle John's Pancake House

14 1/2 Mile Road MI 4-2727
And Woodward Birmingham

BLOOMFIELD
Birmingham • Midwest 4-6006 • A United Detroit Theatre

AIR CONDITIONING
55 DAYS THAT STUNNED THE WORLD!
SAMUEL BRONSTON
CHARLTON HESTON
AVA GARDNER
DAVID NIVEN
SCOPE & COLOR
PERFORMANCE SCHEDULE
Mon.-Fri.—Doors Open 6:00 p.m.—Shown at 6:20 and 9:25
Sat.—Doors Open 12:30 p.m.—Shown at 1:12-4:17-7:22-10:27
Sunday—Doors Open 1:45 p.m.—Shown at 2:12-5:17-8:22