

Review Placement, Size of Your Trees

If you have a garden design problem, then jump into your car and tour around several streets in town to see how the situation has been solved by others.

I am thinking especially about the foundation planting in front of your house.

If you have a display of evergreens review their role in relation to the architectural line of your home. Remember you should be interested in framing a picture when you introduce tall trees on your front footage (a frame is at the side of a picture).

Perhaps you have a home where the native trees are already established. That is a horse of another color. But if you are placing new plant material, remember to consider them as a frame to your home picture.

RECENTLY I visited the home and gardens of the E. R. Pettengill of Holly who are a part of the GM colony there.

The home is a large, spreading, formal-designed, one-story structure. There is a circular drive and within the circle Mrs. Burlingame is a series of geometric patterns separated by wide margins of grass used for strolling.

Within the separate patterns is a friendship garden with shared plants from the gardens of the Pettengill friends. In front of each plant is a label giving the name of the donor. It reminded me of meeting old friends at a party; I liked the sentiment behind it.

THE LANDSCAPE architect had made a suggested list of plants so that the all-over result would not be too much of a hodgepodge.

Two ornamental trees had been planted to assure a vertical line where needed. Also, some evergreens had been placed as screens along the outer margin to assure winter interest.

Night lighting was incorporated within the circle surrounded by the circular drive.

OUTSIDE THE master bedroom was a formal garden in the design

Page THE PHAM ECCENTRIC
8-D August 1, 1962

of a horseshoe. In the center was a beautiful St. Francis piece of sculpturing. White brick with ground red brick gave the pattern 12-month appeal.

At the present time pink geraniums with purple sweet alyssum are planted between the margins of white brick and ground red brick bits. By the way, their bed-room has tones of pink, purple and blue.

The Pettengill home is on Marl Lake with a sweeping lawn going to the water's edge.

What a peaceful stop.

ANOTHER VISIT was made at the summer home of the Carl Kindts of our community who are at Oilway in Georgian Bay. The drive there was rewarding through

the countryside of beautiful Ontario with the purple lupines and daisies waving from the fields. The wind was blowing and the wheat fields swayed in ripples.

Georgian Bay has most of its shoreline surrounded by huge table rocks.

It was interesting to read the growing pattern and notice the unlimited predominance of white pines with their soft tassel-like needles. They grew out of cracks in the rocks accompanied by a great show of ferns.

IF YOU JOINED Mrs. Kindt for her twice-daily swim in the deep channel you would imagine the temperature would match the Detroit River in February. Your

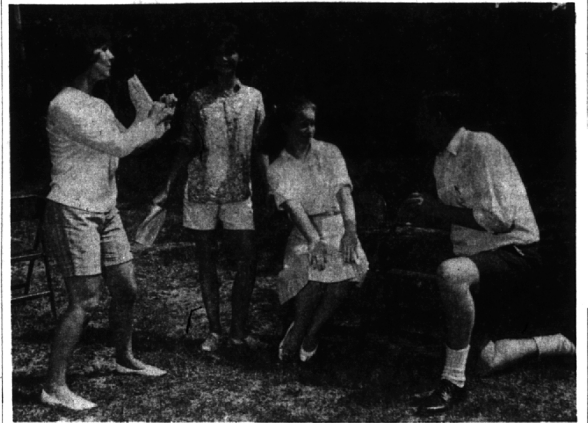
columnist has never missed a dare, so there I was acting half my age.

But the real treat was to catch small mouth bass, skin them and fry a pan full on a table rock, accompanied by beans cooked in the can, plus rolls toasted over the fire.

By the way, the largest small mouth bass was caught on just an ordinary rod without an imported reel as used by the men who feel like pros. And who do you think caught the big fish. You guessed it.

Mrs. Kindt's garden was planted in eight inches of good soil in available pockets of rocks. Huge Swiss pansies, petunias, snapdragons, salvia, etc.

All joined to give a riot of color on the steep bank near their home.



It's Rehearsal Time

Rehearsing for "Collegiate," a new musical with score and lyrics by Carl Wonnberger are (from left) Cranbrook Summer Theatre School students Joyce Harlan, Marie Exner, Cynthia Gray and Frank Green. The work will be presented Tuesday and Wednesday beginning at 8:15 p.m. in the outdoor Greek Theatre on Lone Pine Road in Bloomfield Hills. Others in the cast being directed

by Joyce Harlan are George Seedorf, Dan Janess, Ann Doubllass, Pat Harling, Erin McKenna, John Tyler, Debbie Dobski, Jim Miller, John Tillotson, Barry Baker, Robert Chapel, Alice Colombo, Jack Delcomyn, Richard Kenyon, John Billington, Barbara Esslinger, Judie Lane, Kate Klarr and Judie Gordon. Assistant directors are Linda Zimmerman and Candy Ceder.



Your New Neighbor BLOOMFIELD OFFICE

North Woodward at Square Lake Road

YOUR NEW NEIGHBOR—our Bloomfield Office—is providing all our bank's services immediately while plans are being completed for the fine banking structure to be erected on North Woodward at Square Lake Road.

THE BLOOMFIELD OFFICE will have unexcelled facilities—for checking and savings, loans of all types, safe deposit boxes and complete trust service. Drive-in windows and ample free parking are included in the plans, with appropriate landscaping of the property.

YOUR NEW NEIGHBOR welcomes friends and customers, old and new, for all banking services.

BANK of the COMMONWEALTH

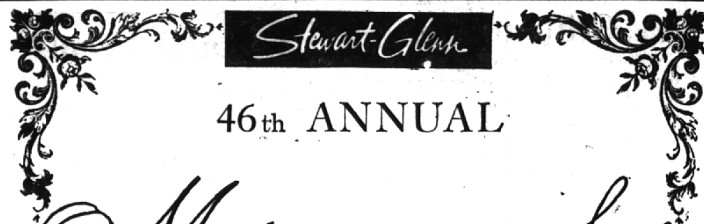
Resources \$547,000,000

BLOOMFIELD OFFICE

MONDAY THROUGH THURSDAY: 10 A.M. to 5 P.M.
FRIDAYS: 10 A.M. to 6 P.M.

OPEN SATURDAYS: 9 A.M. to 1 P.M.

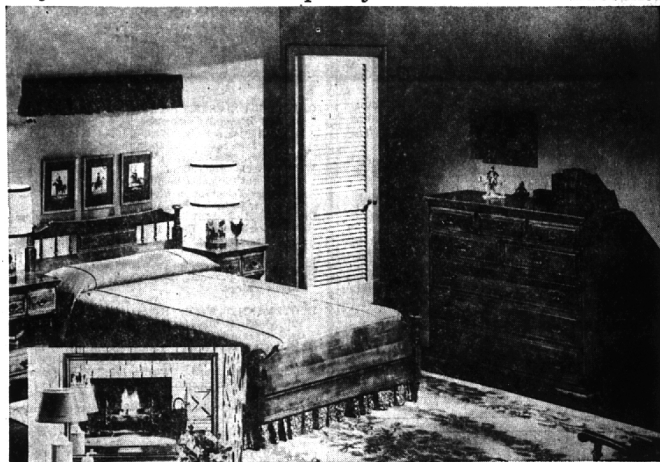
Member Federal Reserve System and Federal Deposit Insurance Corporation



Midsummer Sale

up to 40% off

Early American • Contemporary • Modern • Provincial

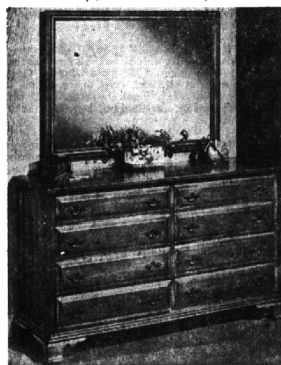


Exceptional Savings On
Solid Hard Maple Bedroom
Groups in Colonial Design By

Bonnie Kate

Triple Dresser Base in lustrous hard maple, measures 20 x 58 x 32 1/4 H. Nine roomy drawers are completely finished and polished, inside and outside.

Dresser, \$179.95—Mirror, \$54.00



Double Dresser with eight drawers measures 19 x 56 x 32 3/4 H.

Dresser, \$179.95—Mirror, \$39.95



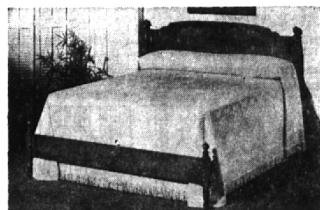
TOP PHOTO:

Panel Bed 4/6 or 3/3 \$89.50
Night Stand \$56.00
Night Stand (Not shown) \$39.95
Chest of 8 Drawers \$169.95

LEFT PHOTO:

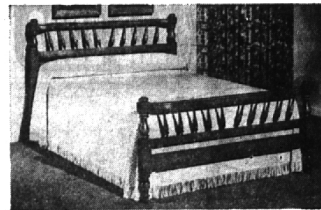
Chest of 5 Drawers (19x34x16 H) \$152.00

Interior Decorating Counsel At No Extra Cost



Handsomely styled colonial panel bed with very low footboard. 4/6 or 3/3

\$49.95



Replica of an authentic colonial spindle bed in lustrous hard maple. 4/6 or 3/3

\$99.50

Open Thursday, Friday, Monday Evenings 'til 9 P.M.



Budget Terms—10% Down Delivers

All-Conditioned For Your Comfort

just south of Orchard Lake Rd.—Park Free