

Potpourri

by JULIE CANDLER
Special Writer



California, here comes Donald R. Buby, sculptor. After the end-of his friends gave Don Friday night at the old red barn on Hunter Boulevard, California may have heard the news already.

The barn was dancing with joy that night, though Buby's friends and business associates were sincerely sorry to see him leaving.

Don's partner in architectural sculpture, Malcolm Moran, and other friends got together and surprised the Bubys by presenting them with a big tent-trailer. It's a two-wheel ticket to camping adventure, with enough sleeping bunks for Buby, his nice wife and their three children, plus an elegant stove, refrigerator, sink and storage cabinets.

Now that's what I call true friendship.

THE GIFT-GIVERS financed their purchase by giving each contributor a chance to take home one of the Moran-Buby sculptures hanging in the barn. Friday night, Moran took the sculpture models from the walls and tables of their soon-to-be-vacated workshop and raffled them off to the contributors.

The Bubys leave their home in Royal Oak today for Carmel, Calif. Even while Don was enjoying his success here as an architectural sculptor, he was hankering for the West Coast.

He will probably return to Birmingham when it's time to design new sculpture pieces for the line he, Moran and company produce. Moran will carry on at 1259 S. Woodward, Birmingham.

AFTER THAT party, the red barn next to the Bottle & Basket is going to seem dreadfully empty.

Those who helped to jam the barn and bounce laughter off each rafter were the Bernard Schulaks, the Baltazar Korabs, Dr. and Mrs. Meyer O. Cantor and the John Emerys. More assistance came from Betty Conn, Spyros Spiteri, Gerald David Steel, Mrs. Irving Evans, Gerri King, Cien Michael and one monster of a green parrot.

A member of the Buby family, the parrot will soon be arriving in California. And that will gladden the heart of at least one resident of Birmingham we know.

WHEN YOU HAVE a friend who's just spent an evening with William Saroyan, it's hard to resist doing a little name-dropping by proxy. Bill Saroyan's a great guy with a good sense of humor, say my dear friends the William H. Schoens of 1240 Dorchester, Birmingham. They are the lucky ones who spent Sunday evening with Bill.

They say Bill's a handsome man with a large, drooping moustache and a wonderful, booming laugh. He was driving from the East to West Coast with his quiet cousin, John Saroyan, and they had stopped overnight with the Robert Hodesths of Ann Arbor.

"I'm on a journey back to pay homage to the remaining Saroyans," Bill said.

"**CONFIDENTIALLY,**" said cousin John, "Bill's a temperamental fellow, but I understand him."

Bill has written a novel called "not Dying" which will be out soon. His latest book is "Boys and Girls Together."

Bill plans to spend exactly one month writing another novel soon. At the moment, he has no idea what it will be about.

Sunday night Bill told about an acquaintance who claimed he never took a drink because, according to the friend, his father was an alcoholic.

Saroyan's comment to his friend was, "My father was a minister. I ain't worried."

ANOTHER LOCAL writer turns up this month in Impressario. It's Dean (Mrs. John H.) Warner of 1061 Lakeside, Birmingham. She tells the potent life story of the first method actress, Adrienne Lecouvreur.

In the days of 18th Century France's theatrical pomposness, Adrienne started something by projecting her innermost being into her acting. And from Dean's lively description, Adrienne was quite a being.

DOWN TO EARTH

Woman Gives Tips On Garden Design

By ALICE WESSELS BURLINGAME
Special Writer for The Birmingham Eccentric

In our Birmingham area we have many superior garden designers who use their foundation knowledge of art to make their garden pockets of beauty.

Among those with this talent is Mrs. Lewis Dibble, 1100 W. Lincoln. She goes on this premise: "Gardens are for the people who own them." In the past they were designed for the person who passed by on the street.

Mrs. Dibble says "Now we want personalized gardens. When they are alike no mystery awaits the visitor. Gardens need surprises. Today we look for peace and seclusion to balance the tempo of our living."

HERE ARE some of her hints to guide the gardener as he adopts her point of view:

- The enclosure is important. If this garden is not enclosed it becomes a landscape.
- A portion of the whole should be paved.
- Night lighting is important for more hours of pleasure, both winter and summer.
- It is very important that there be a focal point, a reason for "being."

Because Mrs. Dibble is a fine horticulturist as well as a designer she has these suggestions to share: Become acquainted with the species tulip, as it will give you three flowers on a stem. (I second the motion because they are low enough not to be affected by the wind and will give a nice splash of color, especially near an exit or in a rock garden.)

Never cultivate ground azaleas as they are shallow rooted.

Mrs. Dibble's favorite flowering crab is Arnold which has pale pink flowers which will turn to white.

Japanese iris need lots of water when they are in bud to mature to perfection.

Mrs. Dibble feels as though phlox (large size perennial) and evergreens form a perfect combination for a beauty garden. You will like to use these large perennials because you can have fine

results in three-quarters shade.

The west wind is most damaging so that you, the gardener, must keep this in mind when placing choice plant material. It is always a pleasure to salute a fine gardener who shares her talents.

RECENTLY I have had some extensive chats with Albert Kenney who is here on a temporary assignment from London, England. He belongs to two garden clubs in his area and is very interested in practical horticulture.

We are agreed on the comparison of the two types of gardening representing each of the countries: the English style emphasizes a fine collection of plant material groomed to give its best performance while our gardens have primary emphasis on styling and the

use of evergreens and shrubs to reach this goal.

A CHUCKLE is always good for the soul. When I drive to the Birmingham Post Office and try to find a place to park, I look up to this sign on St. James Episcopal Church and smile:

"When Noah sailed the ocean blue He had his troubles same as you For 40 years he sailed his ark Before he found a place to park."

FAST HATCHERS

Small eggs usually hatch faster than large ones. Robins' eggs, for instance, hatch in from 13 to 14 days. A bald eagle's eggs, on the other hand, take around 35 days.



Mrs. Burlingame

DEVELOPERS OF

Colonial Communities

CONCORD GREEN
EAST GREENWICH GREEN
WEST GREENWICH GREEN
NOW—METAMORA GREEN—

Wm. J. PULTE, Inc.
MASTER BUILDERS
BIRMINGHAM
MI. 6-0105

PULTE - BUILT - MEANS - BETTER - BUILT



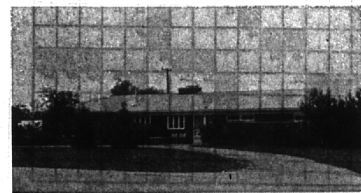
YOUNG FAMILIES—Here's that unusual 1½ story home set on a large 80 ft. lot with loads of yard for play area. 3 nice bedrooms, convenient and cheery kitchen, enclosed breezeway, full basement, and attached garage. **JUST A STEP FROM SCHOOL!** \$15,900.



WOODED VALLEY — Invisible from the front of this custom Ranch is the exposed lower level that enjoys a quiet stream view. There are 2 twin bedrooms with space for a third, huge family room, breeze-swept jalousied porch and spacious kitchen. **EXCEPTIONAL QUALITY!** \$34,500.



ROLLING HILLS—In one of the areas most scenic subdivisions, this value-packed brick ranch has 3 nice bedrooms, tile bath plus convenient lav., and a leisure-time family room. With newly new carpeting and using Bloomfield schools—**YOU'LL LIKE IT!** \$24,500.



FUN TO OWN—Accented by a sweeping circular drive lined with nice shrubbery, your family will enjoy the spaciousness of this appealing Ranch. **FOUR** nice bedrooms, 2½ baths, large 20 ft. family room adjoining kitchen, and att. 2½ car garage. **CALL AND SEE!** \$30,750.

HALL & YOUNG

REALTORS

Inc.

"Twin offices"

BIRMINGHAM 345 S. Woodward MI 6-7900
BLOOMFIELD 4114 W. Maple MA 6-5900
OPEN TILL 9 P. M.

Showcase of homes

"Showcase" features each home listed with Hall & Young in lighted photos and color slides. **RESULT** — more effective sales exposure for sellers and easier selection for buyers.

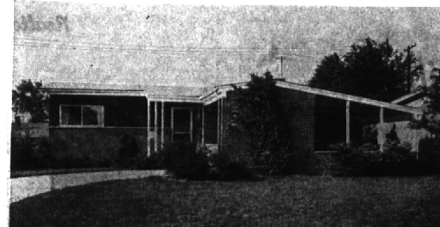
TOP VALUES IN EVERY PRICE RANGE - - -

IN TOWN — \$15,700



Here's a lovely home close to schools and shops, at a bargain price. In lovely condition, it has 3 Bedrooms, large living room with pine paneled fireplace wall. Carpeting and draperies. \$800 down!

WALK TO JR. HIGH — \$20,500



You can't find a 4 Bedroom, full basement house anywhere near the price of this dramatic modern. In top condition, it has a well landscaped yard, carpeting and draperies, and the kids can walk to Birmingham Jr. Hi. You can buy with \$1,000 down.

WITH 10 ACRES — \$55,000



You can divide the 10 acre site this modern farmhouse sits on and buy it for a song. Magnificently landscaped setting in Bloomfield Hills, the home has been modernized and is in superb condition. Don't miss this!



"NATIONALLY KNOWN REALTORS"
MAX BROOK INC.

MI 4-6700
300 S. Woodward.