

May Still Add New Plants To Your Garden—But Soon

Even though at this date you might feel that your garden is all set with a choice of plants, remember you can add to its splendor by new introductions until at least mid-July. Then I am inclined to wait a month before daring to plant new material due to the warm weather.

How many of you have astirbe in your garden? It is delightful this time of year with its handsome divided leaves and feathery plumes. It is a perennial which grows about two feet high and has plumes which might be white, red, pink or rose-pink.

This plant will take three-quarters shade and likes to have its feet covered with a mulch because of its love for dampness. It is a perfect selection to be placed next

to an ornamental pool. It is a shallow rooted plant so don't cultivate around it.

THE STERLING Bowl Tournament has been held as a national tournament for the arrangement of roses with



Mrs. Burlingame

prize winner who was Mrs. Keith Willoughby of 32998 Biddlestone Lane, Farmington. She made her prize-winning arrangement with the white hybrid tea rose, White Queen, accompanied by aspidistra.

IN THIS area we have many fans of the vine clematis. Here is a challenge for you. Henry Teucher of the Montreal Botanic Garden has this advice for you: "About the middle of July take leaf cuttings which will consist of a leaf cut with a thin sliver of the twig to retain the bud in the axil of its stalk."

"The sliver is shortened above the leaf stalk and below the bud to a fraction of an inch. Pure perlite is a good rooting medium, watering with a mist often during the

cover in total shade, as a vine on a north side, planted in a pattern to be used as an evergreen hedge with judicious pruning. The So as you wander around your garden in the quiet, just before dusk, try some of this jackknife art so you will always have a "goodie" to share with garden friends.

AS I WRITE this column so many human interest stories beg to be told about the fun of gardening, how it helps those who are handicapped, and the joy of sharing the garden "magic" with children.

If you have colorful flowers in your garden, allow a child to pick a bouquet and take it to a friend.

Theater School Produces Comedy

The teen-age character Henry Aldrich is at large in the barns at Oakland University where the Division of Continuing Education's

summer theater school is preparing production of the three-act comedy "What a Life." Performances are scheduled for July 31 through August 3 at 8:30 p.m. in the Implement Barn on campus. Tickets will be available at the door.

The theater school is under the direction of Harry Goldstein.

Culture

(Continued from 1-D)

the opera sitting beside his enthralled wife who is pictured looking haughtily and silly? Now the pendulum has returned in its swing. Culture is IN. With typical energetic enthusiasm, we Americans are going to get some culture or know the reason why.

AND YET, I don't think Schonberg objects to a culture boom altogether. He used an arm-swinging approach to his topic because he must have a deep, strong affection for the arts and hates to see anyone take them

lightly. Many other specialists in art are also doing their part to inform the people about art. Understanding art is both an intellectual and emotional process—and even emotional responses are in a great part learned.

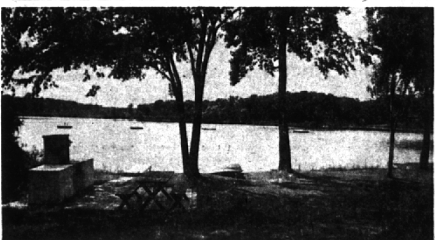
CULTURE, ACCORDING to Webster's, is the enlightenment and refinement of taste acquired by intellectual and aesthetic training. So true culture is a process rather than a possession.

For this reason artists care little whether art is IN or OUT. They will always paint regardless. There will always be those to understand and appreciate. And in the wake of this current culture tidal wave will be left many people who have gained a love of art that will stay with them always, fashionable or not.

PIERCE HOMES PROVIDE THE BACK GROUND YOU NEED



- Bloomfield Hills
- Georgian Colonial
- Living Room opening to Oak Panelled Family Room
- Sliding Glass doors to rear garden and wooded area
- Separate Dining Room
- Kitchen complete with built-ins
- Parquet floors drapers
- 5 bedrooms, 3 1/2 baths



- On Forest Lake—Beach
- 3 bedrooms, 2 baths
- 2 fireplaces living room & family room
- dressings rooms for swimmers

- Slate floors in halls
- Kitchen with all built-ins
- Lawn sprinkled from lake
- Carpeting

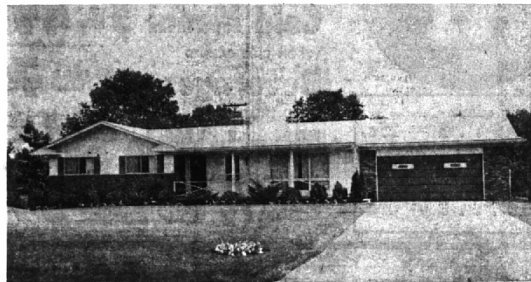


- Village of Beverly Hills
- 3 spacious bedrooms
- Recreation Room with bar
- Family Room
- Basement and office
- Separate dining room



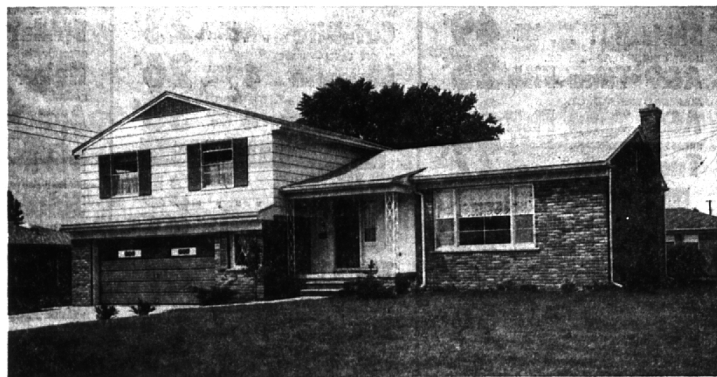
Right On The Water! Wing Lake Front

Refreshing Executive ranch home. From the many picture windows you can enjoy the outstanding natural wooded setting. A lovely sandy beach just a few feet from your door. Brand new decorator's kitchen complete with every built-in including a refrigerator. Fireplace in the 34-ft. living room. Superb recreation room. Top location. Crisply decorated. Call TODAY. \$47,900.



Overlooking Woods and Stream Bi-Level Design

Beautiful rolling lot overlooking woods and stream. 3 large bedrooms, 2 full baths and lav. off kitchen area. Attractive airy fireplaced family room with walk out window wall to patio. Bright kitchen with all built-ins incl. rotisserie-grill. See TODAY. \$33,900.



West Beverly Hills 4 Big Bedrooms

4 large bedrooms, 2 1/2 baths, in Beverly Hills. Lovely 25 ft. Family Room with raised hearth fireplace. Inter-oom system and built-ins in the kitchen. Gas heat, 2 1/2 car att. garage. Luxurious imported beige wool carpeting and draperies included. Beautifully maintained home and on a nice high lot. See TODAY. \$39,750.



FRED PIERCE INC.
460 NORTH WOODWARD, BIRMINGHAM, MICH.
Midwest 7-1414

Chamberlain Co. REALTORS

MI 6-6000