

## Cultural Events

**July 18**  
**BLOOMFIELD THEATER**—Double feature: "Captain Sinbad" and "The Slave," starring Steve Reeves.  
**BIRMINGHAM THEATER**—"The Longest Day," starring Peter Lawford, Richard Burton and Sal Mineo.  
**KENILWORTH GALLERY**—Showing of paintings by several artists at the Kenilworth Gallery, 166 Pierce, Birmingham.  
**CRANBROOK GALLERY**—Annual summer show of work by students of the Cranbrook Academy of Art; will run through mid-September. Also, in the Young People's Art Center Galleries, annual student summer show; will run through mid-September. Gallery hours are 2 to 5 p.m. daily except Mondays and major holidays. Admission charge.  
**INSTITUTE OF SCIENCE**—Exhibit of Pre-Hispanic Mexican civilization and Pre-Columbian architecture at the Cranbrook Institute of Science. Hours are 10 a.m. to 5 p.m. Monday through Friday and 2 to 5 p.m. on weekends. Admission charge. The exhibit will continue through Sept. 8.  
**LITTLE GALLERY**—Exhibit of contemporary Japanese paintings and prints at the Little Gallery, 215 E. Maple, Birmingham. Regular gallery hours are 9 a.m. to 6 p.m. daily except Sundays and Mondays.  
**OAKLAND UNIVERSITY ART GALLERY**—Exhibition of German expressionist and abstract art in the Oakland University Art Gallery through the month of July. Hours are noon to 4 p.m. Monday through Friday.  
**BRIDGE**—Birmingham Duplicate at the YMCA, 400 E. Lincoln, Birmingham, beginning at 7:45 p.m. Open to the public.  
**MEADOW BROOK THEATER GUILD**—Oakland University's Meadow Brook Theater Guild will present four one-act plays (Samuel Beckett's "Endgame"; Tennessee Williams' "Lord Byron's Love Letter" and "Lady of Larkspur Lotion"; and W. B. Yeats' "Purgatory") on campus in the Intramural Building, lower level. Curtain time is 8 p.m. Tickets are available at the door.

**July 19**  
**WILL-O-WAY**—The Will-O-Way Apprentice Theatre will present Arthur Miller's "The Crucible" at the theater, 785 W. Long Lake Road, Bloomfield Hills. Open to the public. Admission charge. Curtain time is 8:40 p.m.  
**MEADOW BROOK THEATER GUILD**—Oakland University's Meadow Brook Theater Guild will present four one-act plays (Samuel Beckett's "Endgame"; Tennessee Williams' "Lord Byron's Love Letter" and "Lady of Larkspur Lotion"; and W. B. Yeats' "Purgatory") on campus in the Intramural Building, lower level. Curtain time is 8 p.m. Tickets are available at the door.

**July 20**  
**HOOTENANNY**—First of a series of weekly Saturday night Hootenannies at the YMCA, 400 E. Lincoln, Birmingham, beginning at 7:30 p.m. Open to the public.  
**MEADOW BROOK THEATER GUILD**—Oakland University's Meadow Brook Theater Guild will present four one-act plays (Samuel Beckett's "Endgame"; Tennessee Williams' "Lord Byron's Love Letter" and "Lady of Larkspur Lotion"; and W. B. Yeats' "Purgatory") on campus in the Intramural Building, lower level. Curtain time is 8 p.m. Tickets available at the door.  
**WILL-O-WAY**—The Will-O-Way Apprentice Theatre will present "The Crucible" at the theater, 785 W. Long Lake Road, Bloomfield Hills. Open to the public. Admission charge. Curtain time is 8:40 p.m.

**July 21**  
**CARILLON CONCERT**—Recital by Dr. Phillip Steinhaus on the Kirklin-Hills carillon at 4 p.m. Open to the public.  
**WILL-O-WAY**—The Will-O-Way Apprentice Theatre will present "The Crucible" at the theater, 785 W. Long Lake Road, Bloomfield Hills. Open to the public. Admission charge. Curtain time is 8:40 p.m.

**July 23**  
**BRIDGE**—Tuesday Birmingham Duplicate at the home of Hilda Murphy, 2424 Manchester, Birmingham, beginning at 1 p.m. Open to the public.  
**July 24**  
**CRANBROOK SUMMER THEATER SCHOOL**—Students of the Cranbrook Summer Theater School will present "The Sleeping Beauty" at 8 p.m. in the Cranbrook opera house.  
**BRIDGE**—The Birmingham-Bloomfield Area Bridge Club at the YMCA, 400 E. Lincoln, Birmingham, beginning at 7:45 p.m. Open to the public.

**July 25**  
**CRANBROOK SUMMER THEATER SCHOOL**—Students of the Cranbrook Summer Theater School will present "The Sleeping Beauty" at 8 p.m. in the Cranbrook opera house.  
**BRIDGE**—Birmingham Duplicate at the YMCA, 400 E. Lincoln, Birmingham, beginning at 7:45 p.m. Open to the public.

**July 26**  
**WILL-O-WAY**—The Will-O-Way Apprentice Theatre will present Shakespeare's "The Tempest" at the theater on W. Long Lake Road, Bloomfield Hills. Open to the public. Admission charge. Curtain time is 8:40 p.m.

**July 27**  
**WILL-O-WAY**—The Will-O-Way Apprentice Theatre will present Shakespeare's "The Tempest" at the theater on W. Long Lake Road, Bloomfield Hills. Open to the public. Admission charge. Curtain time is 8:40 p.m.

**HOOTENANNY**—Second of a series of weekly Saturday Hootenannies at the YMCA, 400 E. Lincoln, Birmingham, beginning at 7:30 p.m. Open to the public.

**July 28**  
**WILL-O-WAY**—The Will-O-Way Apprentice Theatre will present Shakespeare's "The Tempest" at the theater on W. Long Lake Road, Bloomfield Hills. Open to the public. Admission charge. Curtain time is 8:40 p.m.

**July 30**  
**BRIDGE**—Tuesday Birmingham Duplicate at the home of Hilda Murphy, 2424 Manchester, Birmingham, beginning at 1 p.m. Open to the public.

**July 31**  
**OAKLAND UNIVERSITY THEATER SCHOOL**—Students in Oakland University's Summer Theater School will present a Henry Aldrich comedy, "What a Life," at 8:30 p.m. in the Implement Barn on campus. Open to the public. Tickets available at the door.  
**BRIDGE**—The Birmingham-Bloomfield Area Bridge Club at the YMCA, 400 E. Lincoln, Birmingham, beginning at 7:45 p.m. Open to the public.

**August 1**  
**OAKLAND UNIVERSITY THEATER SCHOOL**—Students in Oakland University's Summer Theater School will present a Henry Aldrich comedy, "What a Life," at 8:30 p.m. in the Implement Barn on campus. Open to the public. Tickets available at the door.  
**BRIDGE**—Birmingham Duplicate at the YMCA, 400 E. Lincoln, Birmingham, beginning at 7:45 p.m. Open to the public.

## Teachers Improving Selves This Summer

By JAMES C. TOTTEN  
 Special Writer

Creative expression will be fostered in Northwestern Michigan schools next fall.

Twenty-nine teachers from elementary schools in this area have devoted two weeks of their summer toward bringing out the adventurous spirit in children and helping them express themselves creatively.

The teachers were participants in a Michigan State University workshop in "Creative Expression for Elementary Education," offered at MSU's Continuing Education Center at Traverse City.

Embodied in the course was the fact that every child has something to contribute and should be encouraged to do so, according to instructor Mary Chase.

The job of the teachers when they return to school in September will be to aid their children in the free expression of themselves in such fields as music, creative writing, art, poetry, drama and other arts, she explains.

"You can't work in a vacuum," Miss Chase contends. "Teachers must have experiences in self-expression in a variety of areas to be able to effectively bring this out in children."

To be able to do this, Miss Chase had the teachers—grown men and

women—playing in clay, working with chalk, writing poems, stories and puppet shows, constructing things with all sorts of materials and engaging in other activities which, to the uninformed, would raise a few eyebrows.

"We can't expect teachers who have never written before or have not made puppets or figures in clay to stimulate their students to express themselves in these ways," she maintains.

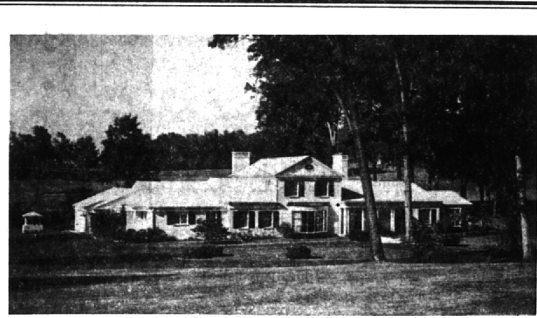
One teacher, Glenna Elhart of Route 1, Traverse City, wrote a poem dedicated to the workshop, entitled "What Did You Do?" The last verse of her poem is especially descriptive:

"Then, suddenly, my thoughts began to jell,

I'd read many books, I had things to tell,

I'd authored a poem and planned even more.

I'd become creative, if through the back door."



### ON BLOOMFIELD HILLS COUNTRY CLUB

In a setting of mature Oaks

- Four bedrooms (master suite with dressing room and superb bath on first floor).
- Plus two deluxe bathrooms and powder room.
- Marvelous kitchen with fireplace, built-in grill, oven, range and gracious dining space.
- Separate dining room with bay.
- Magnificent family room with fireplace, built-in refreshment bar, Hi-Fi and TV.
- Florida room onto beautiful brick patio.
- Completely air-conditioned.

Many extra features — Shown by appointment

## Weir, Manuel & Snyder, Inc.

298 South Woodward  
 Birmingham, Michigan Realtors  
 Birmingham 644-6300  
 From Detroit 566-2323

## Four Youths On European Concert Tour

Four young people from this area are currently touring Europe with the Michigan Youth Chorus, sponsored by the Michigan Council of Churches.

They are Claudia Kesler, Marilyn Mitchell and Jere Stone (all recent graduates of Seaholm) and Lynda Weston (a June graduate of Bloomfield Hills High School).

The group is currently in Helsinki; they have already been to Burton-upon-Trent, England, and will yet spend two weeks in Sweden, take part in the Hans Christian Anderson Festival in

Copenhagen, and go on to Amsterdam before returning home Aug. 14. They left June 27.

While staying at Burton-upon-Trent, they sang in cathedrals at Lichfield and Coventry, appeared on television and were recorded by the BBC.

CLAUDIA KESLER is the daughter of Mr. and Mrs. Kenneth I. Kesler, 1027 Safford, Birmingham; Marilyn Mitchell, the daughter of Mr. and Mrs. John Mitchell, 5420 Longmeadow, Birmingham; Jere, the son of Dr. and Mrs. Thomas H. Stone, 1600 E. Maple, Birmingham; and Lynda Weston, the daughter of Dr. and Mrs. Earl E. Weston, 5655 Forman Drive, Birmingham.

All four plan to study music at the University of Michigan this fall.

# SHUTTERS!

## TOP QUALITY-LOW PRICES!

FOR INTERIOR WINDOWS

H	Width	6	7	8	9	10	11	12
E	20	1.10	1.35	1.50	1.68	1.88	1.98	2.19
I	24	1.50	1.75	1.93	2.09	2.25	2.38	2.48
G	28	1.60	1.94	2.09	2.24	2.40	2.49	2.84
I	32	1.92	2.10	2.44	2.77	2.92	2.98	3.29
H	36	2.26	2.56	2.85	3.16	3.40	3.55	3.76
T	40	3.50	3.60	3.71	3.78	4.04	4.19	4.32

FOR EXTERIOR WINDOWS  
 STOCK 1 1/2 BLINDS — PRICED PER PAIR

14x35 1/2 — \$5.95	14x51 1/2 — \$7.35	18x35 1/2 — \$6.30	18x51 1/2 — \$7.90
14x39 1/2 — \$6.30	14x55 1/2 — \$7.60	18x39 1/2 — \$6.65	18x55 1/2 — \$8.45
14x43 1/2 — \$6.55	14x59 1/2 — \$8.10	18x43 1/2 — \$7.05	18x59 1/2 — \$8.70
14x47 1/2 — \$6.85	14x63 1/2 — \$8.45	18x47 1/2 — \$7.55	18x63 1/2 — \$9.20
14x67 1/2 — \$8.70      18x67 1/2 — \$9.65			

WE WILL HELP YOU DO IT YOURSELF, OR RECOMMEND A QUALIFIED CONTRACTOR

# BIRMINGHAM LUMBER & SUPPLY CO.

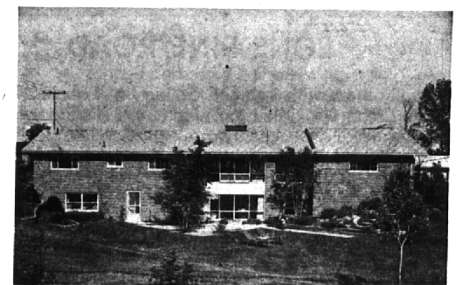
1025 HAYNES STR. — MI 4-3636

Between Adams & Hunter—5 Blocks South of Maple (East of Greenfield's)  
 Hours: Mon. Thru Fri. 7:30 to 5:30 P.M.—Sat. 7:30 to 4 P.M.

## 5 BEDROOMS — COUNTRY SITES — BUYER'S CHOICE



**COLONIAL** on a pretty cul-de-sac in Concord Green. NO TRAFFIC for tot safety. Complete privacy to rear. Near Public and Parochial School buses.  
 Living room with bay and fireplace.  
 Separate Dining room. Family room, too, on first floor.  
 Kitchen and Breakfast area. Dishwasher. Disposal.  
 Aluminum storms and Screens. Full Basement.  
 Lots of Family Living for only \$32,500.



**BI-LEVEL** on a half acre sloping site in Eastover. This is a very large home with many special features and must be seen.  
 Large Living-Dining room with fireplace.  
 Upper-level Family room with raised brick hearth.  
 Kitchen and Breakfast room with all built-ins and special Deluxe oven with broiler.  
 4 Bedrooms on upper level—1 Bedroom (charming) on lower level.  
 Lower-level Paneled Recreation room with fireplace. PLUS a second Activities room (paneled with stove, vent hood, fan, sink & counter) perfect for parties and family entertaining.  
 Sound-proof ceiling in lower level. 3 Baths. 2 Lavs.  
 Terraced and landscaped lawn with sprinkler system.  
 Less than 3 years old. Tremendous living space for \$47,500.

LARGE OR SMALL — CITY OR COUNTRY — We have it or can find it!!! Give us your requirements and price range and let our experienced staff do the primary research for your "dream home."

OR—

### Moving Out Of Town?

You may find it very trying to buy a home in a strange area. SEE US. We are now affiliated with the largest inter-continental referral system in the United States.



American Institute of Marketing Systems, Inc.

## SNYDER KINNEY & BENNETT

INC.  
 Realtors

32740 Franklin, Franklin MA 6-9600  
 239 S. Woodward, Birmingham MI 4-7000

david k. falvey and  
 hugh c. white  
 Insurance Agency

- life
- C. L. U.
- fire
- automobile
- casualty
- home owners
- package
- policies
- hospitalization

COMPLETE  
 INSURANCE  
 PROGRAMS  
 ARRANGED

217 pierce st., Birmingham  
 midwest 4-7803 and ml 4-3610