

- ACROSS
- 1 Flooding
 - 2 Mass of ice
 - 5 Immense
 - 10 Spillover
 - 14 River of India
 - 15 -----Domes, Europe
 - 16 -----Domes, novel by Blackwell
 - 18 Genius of slaves
 - 17 River of Asia
 - 18 Eccentric
 - 19 Pleth
 - 20 Vestiges
 - 21 Human chief
 - 24 Heraldry: grafted
 - 26 Nerve network
 - 27 Pouch
 - 30 Small
 - 32 Gase
 - 36 Gold in Sp. American countries
 - 37 Slow-moving creature
 - 39 Look at
 - 40 Narrow
 - 42 Waste
 - 44 To box
 - 45 Compound ether

Answers to
Puzzle Will
Be Found
on Page 7-D

- 47 -----Firma
- 49 French for summer
- 50
- 52 Epidemia
- 53 Weight of India
- 54 Wife of Hamachandra
- 56 Supercilious person
- 58 Sailors
- 62 To tighten
- 66 Horse
- 67 Fatuous
- 69 Minlay
- 70 Linden
- 71 At no time
- 72 Chew
- 73 Rational
- 74 Sows
- 75 Coaster

West and East Berlin Show Many Differences

EDITOR'S NOTE: This is another in a series of dispatches to The Eccentric from Donald Dennis and his wife, Margaret, as they make a seven-month trip around the world. Dennis teaches art at Bloomfield Hills High School; his wife is a visiting teacher in the same school system. The following letter was written after they spent a few days in West Germany.

West Germany today is rapidly becoming the most progressive country in Europe and in the past few years its growth has been phenomenal. Since we were to pick up a car at the Volkswagen plant in Wolfsburg and since we both had visited this area in the summer of 1960, flying into Germany was doubly exciting. First and foremost, however, we wanted to fly into West Berlin and visit the Soviet sector of East Berlin if possible.

Traveling to West Berlin is accomplished with comparative ease by air, since there are over twenty commercial flights per day into this sector of the former capital.

The flight itself was an interesting one in that in order to land at Tempelhoff airport, the plane circled low over the city for about 10 minutes.

This afforded us a view, which was later confirmed from the ground, of the contrast in activity in both sectors of Berlin. West Berlin streets were bustling with the traffic and people typical of any big city today. While the East sector showed almost no sign of life.

Once situated in West Berlin, we made arrangements to go into East Berlin the following morning. The red tape at "Checkpoint Charlie" was simpler than expected and after an hour's delay we were in East Berlin. The state apartment buildings and stores are a stark contrast to

the modern buildings of West Berlin and although one third of Berlin's total population (8 1/2 million) live in the East zone, very few people were on the streets. No wonder the Russians put up a wall between the two sectors. The wall itself is a living symbol to all West Germany of the life under Soviet Russia. Thirty-seven miles long, 8 to 10 feet in height and covered with barbed wire and glass on top, it still must be guarded by some 20,000 East German police day and night. West Berliners have covered the wall with various memorials to those who have lost their lives in attempts to escape over it from East to West. West German engineers have estimated that one big factor in the housing shortage in the Soviet sector is the amount of brick and mortar in the wall. Enough to build 20,000 family apartment units, and the manpower lost to its construction would have easily done the job.

As a matter of fact most of the workers on this project defected into West Germany while the building was taking place. All in all, it has been a negative attempt by the Russians to keep the German spirit down.

West Berlin has another symbol to remind them of the past and to comfort them in the present. This is the Kaiser Wilhelm Church.

The structure itself is very modern, strong in form and dignified. It consists of two buildings of glass, metal and concrete on either side of the remaining bombed-out section of the old cathedral.

Walking inside the main building one can't help but get a deep feeling of reverence and dignity. The honeycombed windows of stained glass give an ethereal quality to the interior while the modern figure of Christ above the main altar

with arms outstretched is the only other decorative element in the church. This church and the wall are two symbols to West Berliners and the two days in West Berlin and we were on our way to Wolfsburg for our little red wagon. Here again, we were to be impressed by the output of industrial Germany. This one plant alone produces 5,000 cars each day. Now we know what expectant fathers must go through, as we anxiously visited the plant and joyment.

July 18, 1963 THE BIRMINGHAM (MICH.) ECCENTRIC 3-D

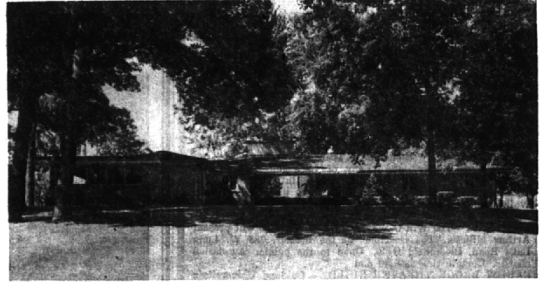
1	2	3	4	5	6	7	8	9	10	11	12	13	
14				15								16	
17				18								19	
20			21					22			23		
24			24					25			26		
27	28	29	30				31	32			33	34	35
36			37					38			39		
40			41		42			43			44		
45			46		47			48			49		
50			51		52			53					
54			54		55			56			57		
58	59	60			61			62			63	64	65
66			67				68				69		
70			71					72					
73			74					75					

PUZZLE NO. 765

ISLAND LAKE

- Exceptionally beautiful site!
- Quality custom built.
- 3 bedrooms, 2 1/2 baths.
- Family room with fireplace.
- 23 x 15 Screened porch with picturesque view of private pond.
- Combination of convenient, yet luxurious living!

\$42,900



3958 Lakeland Lane

BENJAMIN & BISHOP, INC. REALTORS

259 S. Woodward, Birmingham, Michigan

MI 4-3232 - JO 4-5728



LONE PINE ROAD

- Walk to Cranbrook School
- Family room with beamed ceiling • Paneled library
- Dining room • Jaloused porch • Recreation room on lower level
- Greenhouse • Brick BBQ in kitchen
- Many built-in appliances • Four bedrooms
- Three baths • Lav

\$87,500.

CHOICE HOMES



ON ORCHARD LAKE

- Near the Club—210 feet of lake frontage
- Dining room • Paneled library • Screened porch
- Four bedrooms • Three baths • Lav
- Sprinkling system • Black-top drive

\$85,000



BLOOMFIELD HILLS ESTATE

- Great Home for large family
- Dining room • Library • Recreation room • Porch
- New kitchen • Butler's pantry • Mud room
- Nine bedrooms • Eight baths • Lav
- Overlooks Cranbrook Guest House

\$115,000.



LYONHURST ROAD

- Walk to Quarton School
- Dining room • Paneled library • Recreation room
- Five bedrooms • Three baths • Two lavs
- Screened porch • Extra special closets

\$52,500.

Weir, Manuel & Snyder, Inc.

298 South Woodward
Birmingham, Michigan Realtors

Birmingham 644-6300
Phoncs: From Detroit 566-2323