

NEWCOMER?

Have you, or has someone you know, just moved to BIRMINGHAM

Your Welcome Wagon Hostess will call with gifts and friendly greetings from the community.



Midwest 4-0516

WELCOME WAGON

Congress Considers Migrant Laborers

Michigan could well be in for extensive Federal funds if a migrant labor aid program is approved by the U. S. House. The measure recently passed in the Senate.

As one of the leading states in the use of migrant laborers to harvest the crops, Michigan has several times come close to initiating a program of this type on its own.

Former State Rep. Edgar Currie, D-Detroit, tried for over 10 years to get legislation adopted to require services and improved care for the migrant farm families.

NOW CONGRESS is giving serious consideration to four bills which would allow the outlay, in separate appropriations, of an estimated \$50 million for improved education, sanitation and working conditions of migrant laborers.

The bulk of the effort under the Senate plan would provide more than \$35 million in matching funds

to states to pay the cost of educating migrant children and establishing adult education programs for the workers.

Additional funds would be set aside for states which provided day care services for young children of migrant laborers and sanitation facilities in field work areas.

THESE AREAS are almost precisely those which Currie attempted to get Michigan moneys for in past years.

He met strongest opposition from legislators who feared the cost it would incur on farmers who employ the temporary labor.

With Federal funds forthcoming the votes could shift.

State Police Change Work Hour Total

The traditional State Police six-day 56-hour work week came to an end Sunday, as the department instituted a five-day 48-hour work week with a normal working day of nine hours.

The 48-hour week is in accordance with a State Civil Service Commission directive in January which provided that there must be over-time pay or compensatory time for any hours worked in excess of the maximum.

Whereas State Police officers in the past were given one day off in seven, they now receive two consecutive days off.

THE FIVE-DAY week, which puts the State Police virtually on a par in this respect with other private ad governmental employer units, required planning by Commissioner Joseph A. Childs and his administrative officers, because of a severe shortage of personnel.

It necessitated a mass transfer of troopers, also effected Sunday, from larger posts to smaller ones so that the latter could operate daily.

It also resulted in shifting control of the freeway patrols from headquarters to post levels to give more flexibility in assigning officers.

Senile Patients To Be Moved from Mental Hospitals

A move to clear Michigan's mental hospitals of senile patients who have no other maladies is progressing well, according to mental health officer Herbert Bodwin.

Bodwin is the chief of patient affairs for the department and has been directing the effort which was ordered by the 1962 legislature.

It was the legislature's directive that at least 1,000 patients "who manifest general deterioration of mental processes associated with senility" be removed to county and local facilities by the end of this fiscal year.

The department's most recent report indicated more than 1,600 patients, all over 65 years of age, have been referred by the state unit to county bureaus of social aid.

UNFORTUNATELY, at the same report, only 610 of these had been placed in community residences.

"The lag between hospital referrals and placement of the patients is not surprising," said Bodwin.

He said county bureaus were "doing an exceptionally fine job" in finding homes for the referred patients.

Under the intent of the legislature, all those being referred to county units are eligible for old age benefits or other public assistance funds.

NO PATIENT is turned out of a state hospital with the burden of care being placed on individuals or the county government.

The patient affairs director said he fully expected the department could easily meet the 1,000 minimum placement level set by the legislature.

The referral program also will continue into the coming fiscal year under provisions enacted by the 1963 legislature.

School District To Issue Notes For Operation

Atty. General Frank J. Kelly, chairman of the Municipal Finance Commission, has announced that the commission approved \$1,500,000 of Tax Anticipation Notes to be issued by the School District of the City of Birmingham.

These notes are to be issued in anticipation of the receipt of the Dec. 1, 1963, taxes.

ATTY. GENERAL Kelley said, "These funds will be used for operating expenses. These notes are to be dated July 15, 1963; will mature March 1, 1964; and will carry a maximum interest rate of 4 per cent.

Other members of the Municipal Finance Commission are Sanford A. Brown, state treasurer; Billie S. Farnum, auditor general; and Lynn M. Bartlett, superintendent of public instruction.

Make a list of those "don't need's" today. Dial MI 4-1100 and a Classi Laasi will help you.

Realtors Tally Sales Above \$32 Millions

Sales of residential properties, multi-listed by members of the Western Wayne-Oakland County Board of Realtors, acting through their multi-listing system, the United Northwestern Realty Association, exceeded 32 million dollars during the first six months of 1963.

This is according to a report released by Edward J. Dub, chairman of the appraisal and statistical committee for the combined boards.

Total sales for the half-year period amounted to 2,278, with a dollar value of \$32,357,882. Dub reported, down slightly from the all-time record of 2,392 sales for a total dollar value of \$33,291,348 rung up during the first six months of 1962.

THE RATIO of sales to listings, however, improved 16 per cent as compared with last year.

Sales for June by member firms in northwest Detroit and adjacent suburban areas totaled \$13, for a total value of \$5,686,225. The average selling price was \$13,660.

In June, 1962, members using the multi-list facilities of the two boards made 454 sales for a total

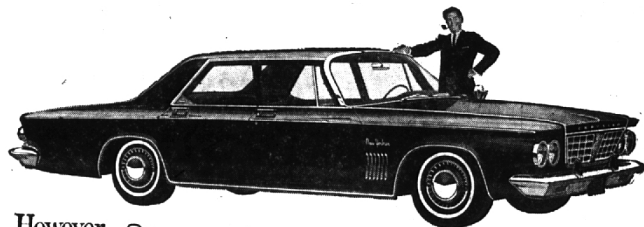
dollar value of \$6,290,027 and an average selling price of \$13,810.

The ratio of sales to listings in the month of June also improved.

THE MEMBER offices are experiencing a brisk market for well located properties with realistic prices, Dub reported.

"Brokers and sellers are finding that firm 'rock bottom' prices get action and sales at the listed price," Dub said.

NOT EVERYBODY LOVES US



However

91.3 PERCENT OF '63 CHRYSLER OWNERS INTERVIEWED BY A NATIONAL MAGAZINE SAID THEY WOULD BUY CHRYSLER AGAIN. IT'S BEEN EIGHT YEARS SINCE ANY CAR WAS SO WELL LIKED BY THE PEOPLE WHO BOUGHT IT.

1963 Chrysler owners spoke their piece in the May issue of a national magazine. The group of owners surveyed had rolled up a combined mileage of 1,297,466 miles on their '63 Chryslers.

They specifically named riding comfort of a '63 Chrysler as the outstanding feature. Handling ease, power, performance, and clean, crisp styling were the next most important reasons for liking their Chrysler.

The 5-year/50,000-mile warranty—America's best and longest new-car warranty—was cited as a major factor in selecting a '63 Chrysler over competitive cars in its class.

Take an hour with your Chrysler dealer today, or tomorrow. Give a '63 Chrysler a full opportunity to show you what luxury, power and performance really mean. Make this your year to fall in love with Chrysler.

*Your authorized Chrysler Dealer's Warranty against defects in material and workmanship on 1963 cars has been expanded to include parts replacement or repair without charge for returned parts or labor, for 5 years or 50,000 miles, whichever comes first, on the engine block, head and internal parts; transmission case and internal parts (excluding manual clutch); torque converter, drive shaft, universal joints (excluding dust covers), rear axle and differential, and rear wheel bearings, provided the vehicle has been serviced at reasonable intervals according to the Chrysler Certified Car Care schedule.

CHRYSLER / AMERICA'S NEWEST PAGE-SETTERS

CHRYSLER DIVISION CHRYSLER MOTORS CORPORATION

BIRMINGHAM CHRYSLER PLYMOUTH, Inc. 912 S. Woodward Ave., Birmingham, Mich.

THURSDAY, FRIDAY & SATURDAY ONLY



TAKE YOUR CAR WHERE THE EXPERTS ARE... TO FIX

CHUCK HOLE SHAKE-UP!



FRONT END ALIGNMENT TO TIGHTEN UP YOUR CAR

- We'll repack front wheel bearings
- Align front end
- Correct camber, caster, toe-in
- Run careful road check

Thurs., Fri., Sat.
\$5.95
any U.S. car

Pay as you ride.

GOOD YEAR

SERVICE STORE

ROYAL OAK
201 E. 11 Mile Rd.
LI 8-0110

FERNDAL
22635 Woodward
LI 8-5770

MICHIGAN BANK NOW OFFERS

FREE PERSONAL CHECKING ACCOUNTS

Simply by maintaining a minimum balance of \$300 or more each month...

1 write as many checks as you want FREE	2 make as many deposits as you want FREE	3 all maintenance services FREE	4 all monthly statements FREE	5 bank-by-mail service FREE	If you prefer to maintain a balance of less than \$300... your Michigan Bank charges only 10¢ a check.
---	--	---------------------------------------	-------------------------------------	-----------------------------------	--

OPEN A MICHIGAN BANK CHECKING ACCOUNT TODAY!

MICHIGAN BANK

NATIONAL ASSOCIATION

VISIT OUR BIRMINGHAM-BLOOMFIELD OFFICE AT MAPLE AND LAHSER ROADS

Open 'till 4:30 every weekday, including SATURDAY, branches open 'till 6:00 P.M., Friday

MEMBER FEDERAL DEPOSIT INSURANCE CORPORATION