

Benefits

(Continued from 1-D)

terian Church and the Birmingham Public Library—but sometimes the Library would schedule other activities for Thursday, so they would meet on Wednesday. That is when the name was changed from "Thursday Musicals" to "The Birmingham Musicals."

With the Community House dedication on April 28, 1930, the Birmingham Musicals immediately spearheaded a drive to purchase a grand piano for the auditorium. By November of that year, the piano was installed.

THE BIRMINGHAM Musicals has met regularly ever since at the Community House on the second Thursday of the month at 1:30 p.m.

8-D THE BIRMINGHAM (MICH.) ECCENTRIC July 11, 1963

with the exception of the Christmas program, which is held in a different Birmingham church each year and is open to the public.

The piano which the Musicals helped to buy for the Community House served from November 1930 until the Musicals spearheaded a drive last year to buy a new one. The piano was purchased in December 1962 and officially dedicated at the January, 1963, meeting.

IN ITS 37 years, the musicale has been devoted to the performance and appreciation of good music within its membership and to the stimulation of musical interest within the community.

Today there are over 350 active and associate members. The associate members serve on committees

such as tea, hostess, and house and stage. Active members are those who perform at the meeting each month.

WITHIN THE active membership are several groups. One of these is a chorus of 60 voices led by director Alice Engram. The chorus meets once a week from October to March and performs in the Christmas and spring programs.

Another choral group is the Madrigals, founded and directed by Mary Jane Walker. The Madrigal Singers appear before the club once a year and are heard in the metropolitan area on many occasions. This group usually appears in period costumes and powdered wigs.

A more recently formed group within the active membership is the string ensemble, under the direction of Arthur Stubbly. Besides performing for the Musicals when the program chairman requests them, these string players also form the nucleus for an orchestra when local organizations desire an accompaniment for an operetta or just an evening of music.

"THREE JUNIOR clubs ranging in age from the fourth grade through high school meet once a month from October through May, concluding their year with a concert open to the public. They are "Merry Music Makers" (grades four, five and six), and the "Moment Musicals" (grades seven, eight and nine) and the "Junior Musicals" (grades 10, 11 and 12).

Each year the Birmingham Musicals holds a benefit to raise funds for scholarships. These scholarships are awarded to the outstanding junior club members as recommended by judges. Between five and seven scholarships are awarded which are used at National Music Camp for two weeks each summer at Mt. Vernon, Pa. University for a three-week period.

ANOTHER ACTIVITY is that of music therapy. Every other week women (usually nine) go to Pontiac State Hospital to bring the outside world of music to over 100 patients.

For years (28th year coming up) the Musicals has sponsored the Christmas Eve Sing in Shain Park. The group has also purchased records for circulation through the Baldwin Library, given a piano to the high school, and three years ago presented a piano to Pontiac State Hospital.

THE BIRMINGHAM Musicals is a member of the Michigan Federation of Music Clubs and the National Federation of Music Clubs. At present 12 of our members are on the state board and one is on the national board.

Mrs. Vernon L. Venman, a member of the Birmingham Musicals

living at 499 N. Eton Rd., Birmingham, is at present serving as president of the Michigan Federation of Music Clubs.

NATURE NOW

By Lydia King Prehes
Special Writer for The Birmingham Eccentric

Some Questions Unanswered In Probe of Earth's History

This week we continue to explore life's record as seen in the Chicago Natural History Museum. As today's scientists read the fossil remains they find that a bewildering array of life forms were already established in the Cambrian seas of some 600 million years ago.

The most primitive of these left no fossil record for they were microscopic bits of soft tissue. However the museum holds much evidence of the wide range of early invertebrates during the Paleozoic or "Ancient Life" period.

Included are such species as brachiopods, corals, sea lilies, sponges, sea urchins, star fish and trilobites. Many of these have persisted throughout the millennia and related forms still exist in our present seas.

PLANT LIFE of this early period left few fossil remains due no doubt to the soft tissues of such species as algae and sea weeds.

The middle part of the Paleozoic characterized by the fishes. The fossils show many species now extinct as the primitive but spectacular armored fish of some 250 million years ago. During this time the first early land plants, thought to resemble our lichens and liverworts, and the first scorpion-like land animals came into existence.

The lush and colorful Coal Age swamp flora which followed closed this early period. It is well represented in the museum both by dioramas and fossils. Our ferns, club mosses and horsetails are remnants of these plants which then took the place of trees together with the now extinct cycads and caryodolids.



Mrs. Prehes, who took the place of trees together with the now extinct cycads and caryodolids. Many fossil insects belonging to

this period including bees, flies, ants, butterflies, moths, cockroaches and dragon flies are displayed. There is also an astonishing array of mounted present-day species of insects.

AMPHIBIANS were the dominant animals of the Coal Age swamps. There is the fossil record of one named "Eryops," seven feet long, who sunned himself in the mud flats of a Texas delta some 280 million years ago.

The Mesozoic or "middle period" of life is characterized by a large assortment of reptiles with the dinosaurs holding the center of life's stage for some 140 million years. A wide variety of conifers became established heralding the first flowering plants. Each of these groups is well represented in the exhibits.

The Cretaceous or "modern period" which began about 60 millions of years ago is called the age of mammals and flowering plants. Extinct mammals of this period are represented by two habitat groups, that of the three-toed horse and that of Titanotheres, a species allied to our rhinoceros.

A wide variety of animals, many now extinct, who were ancestors of our present day mammals roamed the continents. Fossils show many birds and insects.

Your scribe paused long before the restoration of a family group representing primitive man who lived in a limestone cave in Neanderthal, Germany, sometime near the end of the fourth Glacial Period.

THE "AGE OF MAN" which begins with post-glacial time (17-20,000 years ago) is marked by our present flora and fauna. It is probable that flowering plants are not as abundant in species as they were in late pre-glacial times and that our animals reached their climax in the now extinct saber-toothed tiger, the mammoth and the mastodon.

Much is left out in this short account. Do "go and see."

After two full days in the museum, we left reluctantly, a few of our questions about life unanswered, many as yet a mystery. And so the unknown leads us on to wonder, to work and to grow as best as all who walk this small planet Earth.

Only one of over 300 Patterns . . .

Franciscan FAMILY CHINA

Maytime



Pastel pom-poms on sturdy china that is guaranteed for a full year. Created by one of our proudest brand names... Franciscan, makers of "the beautiful best in dinnerware..."

16-Piece Set service for four **24.95**

45-Piece Set service for eight **74.95**

We stock a number of Franciscan family China patterns at above price.

from England

50-Piece (for eight) Royal Staffordshire—Wheat. **SPECIAL 16.75**

Pontiac Pottery

NORTH END OF MIRACLE
MILE SHOPPING CENTER
ON TELEGRAPH ROAD

Telephone FE 2-8642
Open Daily and Sunday 10 a.m. to 8 p.m.

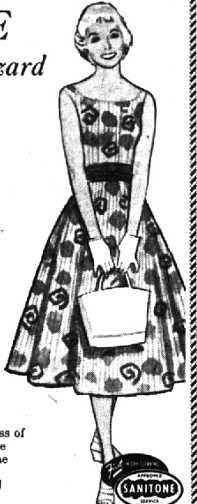
BEWARE the Water Hazard for High Style Cotton Dresses!

DOUGLAS CLEANERS

THE Sanitone COTTON CLINIC

Is the safer, far better way to keep them flower-fresh and tissue-crisp.

In just a few home washings, the delicate charm of today's exquisite summer cottons may be lost forever. Our Sanitone Cotton Clinic restores the original loveliness of colors and patterns. Sanitone Style-set® Finish restores the original like-new body to daintiest cottons. Try it and see! Call for service today!



Dry Cleaning & Shirt Service. In by 10 a.m.—Out by 5 p.m.

Douglas Cleaners

534 South Woodward 65 W. Long Lake Rd.
Birmingham MI 4-1507 Bloomfield Hills MI 4-3242

Movie Guide

Parenteen Committee
Birmingham P.T.A. Council

MOVIE Green Sheet National Legion of Decency
Wonderful World of the Brothers Grimm *F-C A-1
The Longest Day A-1
Captain Sinbad A-1
The Slave A-MY A-II
Outstanding film CODE
GREEN SHEET

These audience symbols are intended as broad guides to selection, and do not indicate either recommendation or non-recommendation of the films to which they are applied.

A Adults
MY Mature Young People
Y Young Peoples (12 years to 16 years)
C Children (unaccompanied by adults)
F Family

NATIONAL LEGION OF DECENCY

A1 Morally Unobjectionable for General Patronage
A2 Morally Unobjectionable for Adults and Adolescents
A3 Morally Unobjectionable for Adults
B Morally Objectionable in Part for All
C Condemned
SC A separate classification is given to certain films which, while not morally offensive in themselves, require some analysis and explanation as a protection to the uninformed against wrong interpretations and false conclusions.

living at 499 N. Eton Rd., Birmingham, is at present serving as president of the Michigan Federation of Music Clubs.

RAMBLER'S "SAVINGEST DAYS" BEGIN RIGHT NOW!

JULY						
SUN	MON	TUES	WED	THUR	FRI	SAT
						Rambler American "220" Two-Door Sedan—America's lowest-priced car*. Room for a family of six. "Car of the Year" quality with famed Rambler gas economy. \$40³⁴ PER MONTH*
						Rambler American "400" Convertible—smart and sporty, yet America's lowest-priced convertible with power top standard*. Bucket Seats, optional. \$51²² PER MONTH*
						Rambler American "330" Four-Door Sedan—full family room, plus ample space for luggage. Most beautiful interiors at anywhere near this low price. \$42⁷⁹ PER MONTH*
						Rambler American "330" Two-Door Station Wagon has 64 cu. ft. of cargo space... extra carrying capacity on the Roof-Top Travel Rack, standard. \$46⁷⁸ PER MONTH*
						Rambler American "440" Hard-top with 125-hp Six got most miles per gallon of all cars in all classes in the 1963 Mobil Economy Run. \$46⁶⁸ PER MONTH*

Year's highest trade-ins! America's obviously better values!

Now's the time smart buyers have waited for—Rambler's "Savingest Days" when your present car is worth most in trade for any new Rambler—American, Classic, or Ambassador.

These beautiful new Ramblers are your best buys because they cost less, but give you more: Stronger construction. Double-Safety Brakes (self-adjusting). Deep-Dip rustproofing. Ceramic-Armored exhaust system designed to prevent rust-out.

Get all these extra values now during the "Savingest Days" in Rambler's Trade Parade. Come in today!

JOIN THE TRADE PARADE TO
RAMBLER

BIRMINGHAM RAMBLER, INC.

666 South Woodward Avenue

Dickinson's Semi-Annual Sale

Summer and Year 'Round SUITS

Values to 59.95	NOW 48.70
Values to 69.95	NOW 58.70
Values to 79.95	NOW 68.70
Values to 89.95	NOW 78.70
Values to 100.00	NOW 88.70

SPORT COATS

Values to 39.50	NOW 28.70
Values to 47.50	NOW 38.70
Values to 55.00	NOW 46.70

STRAW HATS, 25% OFF

- Short Sleeve Sport Shirts
- Long Sleeve Sport Shirts
- Bermudas
- Swim Wear
- Summer Caps

Now 20% Off

SLACKS

Were 16.95	NOW 13.70
Were 19.95	NOW 16.70

Dickinson's

Wabeek Building
Birmingham
Open Thurs. & Fri. Nights

Saginaw at Lawrence
Pontiac
Open Mon. & Fri. Nights