

NATURE NOW

By Lydia King Frehse  
Special Writer for The Birmingham Eccentric

# Winds Move State Sand Dunes Inland

As we approach the full tide of summer, the injunction of our state's motto comes alive for many of us: "Would you see a beautiful peninsula? Then look about you!"

On last weekend the Michigan Botany Club did "look about" the Leelanau Peninsula. Our campout was held at Gilbert Lake near Traverse City.

It is always heartening to share the experiences of those who favor the outdoors. They are a constant ally to a wide spectrum of interests of which botany is only one. The sun shows warm, the birds sing an unforgettable chorus and the vagrant wind carried all the fragrance of early summer.

IN THE COURSE of the weekend we revelled in the beauty and diversity of a variety of plant habitats. Among these the Sleeping Bear Dune in our Glen Lake area is perhaps the most unique.

It is only one of the great shifting dunes along the coasts of Lakes Michigan and Superior. They change the view with every breeze that blows while the dry and yellow sands are moving "imperceptibly" inland.

The more adventuresome of our group climbed Sleeping Bear as Mrs. Burlingame your scribble.

It is the perched dune of an ancient lake and viewed from the mouth of the Plat River which empties into Lake Michigan some twelve miles to the south, one can see the dark line of demarcation which separates the yellow sands from a moranic hill upon which it rests.

## 'High Cost'

(Continued from 1-D)

with the author and star, but Fred Coffin, in his parts, is a mobile, burlesque actor. He plays the roles broadly, eyes rolling, mouth open, brows wrinkling.

Of Mike Hadd and Mickie Falk were any livelier in some of the production numbers where they step to the apron of the stage and swing their arms or raise their legs like a pair of wind-up toys.

The chairman of the senate committee, Felix Hadd, uses his body and his hammer rhythmically, acrobatically and crisply to create, if possible, another fine comedy role.

Jo Anne Meurer was Tamara Tomouhenko, the Russian secretary of Howard Honeycutt, who "saw more etchings than an artist." It is hard to believe it was a coincidence that during her number, "Spontaneous Combustion," some of the scenery fell.

### TO CONTINUE

with the numerous credits, the very act of staging an original work is creditable. It is something of the moment, and, therefore, alive.

Isabel Himelboch wrote a variety of songs, from the marchlike hymn to the credit-buying American, "The American Way," where the trumpets hail in mock seriousness, to the patter songs, "Payboys' Song" and "We're Gonna Have Ourselves a Little Hearing."

The love songs are weaker in music and lyrics than the ironic ones, such as the Kurt Weill "Berlitz" torch take-off, "A Housewife's Complaint." Here Maggie, Hannah and the maid, Kottie perform a kind of tango and each refrain with a stylized lift of the foot or shake of the body. It is all done deadpan and the intense, scottish expression of Fay Brown as Kottie Pedarovich, makes the number even more hilarious.

"ON TO Washington," where the chorus enters from the rear of the auditorium, and marches on stage, is spirited. The music all through the gambling scene is excellent. The very fact that 16 original songs were written for the show is staggering, but the program omitted all mention of an arranger.

The mood of the play was that of the fraternity or college show full of "in-jokes," such as what separates Bloomington from Pontiac or Royal Oak—the number of credit cars, third mortgages and maids.

Hantramack is referred to as a "friendly ally."

Romey's name is brought up repeatedly and cheered and Guy Nunn's is boo'd.

The theme is rather thin when analyzed, return to the single life (of cash), forsake the materialistic extravagance (of credit-car buying). They both seem to involve money or the lack of it.

### THERE ARE

tasteless notes among the splendor of staging and costuming. The fagin job in the "Friendly Finance Man" song is one, with accents, exaggerated hats and idiomatic expressions.

Another is the reference to Kennedy's religion, which would prejudice the President against the divorce of an office seeker. The President himself, who is referred to as "The Rocking Chair," is often dealt with disrespectfully rather than wittily. There can be disrespect, but the point is blunted when the humor is heavy handed.

A last inaccurate note is Howard Honeycutt seeing the error of his ways, and, before the Senate committee, withdrawing his nomination to the cabinet. Since the President nominated him, only the President can withdraw the nomination, it seems to me.

### THE DIRECTION

by Jack Haasberger, is excellent with good group control, variations of movement, accents, and entrances by an uninvited group.

The costumes, planned by a committee, chaired by Mary Ann Davis, are as lively as the writing. Aunt Maggie's final appearance in a just yellow suit with black polka-dots and a black furry hat with a single red poppy is almost enough without song or lyric.

### THE SAND BULK

of Sleeping Bear rises 90 to 125 feet above the moraine upon which it lies or 450 feet above Lake Michigan.

It is augmented by winds from the west and diminished by winds from the east.

It is located one mile west of the mounds of sand near Glen Lake where thousands of tourists make a day's sport of riding the slopes. Many of these do not reach the rolling dunes which reach to Lake Michigan and which are the source of the shifting sands slowly moving inland.

### LAKE EROSION

is active but varies in intensity all along the Sleeping Bear Peninsula. Here the wind sweeps unhindered across Lake Michigan scattering eroded till particles and sand across the surface of old moraines thus building a system of dunes which provide many interesting views as well as plant habitats.

Here the vegetation is as shifting as the sands which support it. As the dune moves inland, the power of the shifting sand slowly erodes the established vegetation, destroying its rooting foundations.

### WITHIN 10 YEARS

cottonwoods which were visible on the north east face have been buried and oak, hemlock and balsam fir have been erased.

During the last five years such hardy shrubs as red-flower dogwood and several species of viburnum have disappeared.

A ghost forest is still present on the southwest quarter of Sleeping Bear where erosion is rapid. An association of white cedar and wild cherry persists on the southwest quarter. Tenacious poison ivy grows deeply in the shifting sand.

On the windward side, Pitchers thistle, creeping juniper and worm wood live out their precarious lives rooted deeply in the shifting sands.

Both the rate of erosion and the movement of the crest of the dune were being increasing. According to precise measurement the entire crest has retreated 53.3 feet in less than thirty years.

### BIRCH AND WHITE

cedar still grow along the northwest and northern slopes. Dogwood, bitter-sweet, sand cherry and beach grass survive near the crest.

Hardy perennials like milkweed, smooth aster and wild rye maintain a precarious foothold on the slopes where the sand movement is greatest.

On the leeward side your scribble found such familiar plants as horsetail, evening primrose and beach pen interwoven with the tough tendrils of wild grape.

Both the rate of erosion and the movement of the crest of the dune were being increasing. According to precise measurement the entire crest has retreated 53.3 feet in less than thirty years.

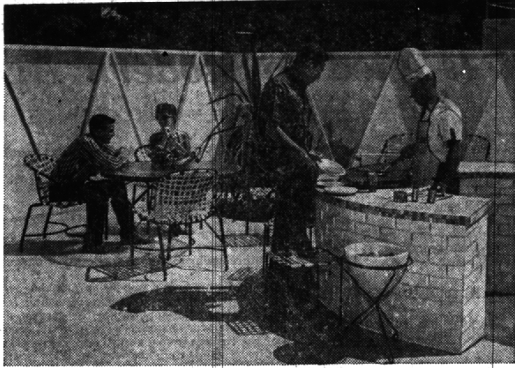
### THROUGHOUT THE YEARS

the dunes have marched on covering and uncovering forests and Indian villages and even the first settlements of the white man. There are those of us abroad who believe that their unique and appealing charm should be preserved for the enjoyment and instruction of future generations.

## Cranbrook Theater Students Begin on Group Performances

The Cranbrook Summer Theater School opened recently for its 21st season. The students, aged 9 through college age, presented their first workshop plays for each other last Friday morning. On Monday night they give them for their parents and friends in the outdoor Greek Theatre at Cranbrook where the school holds classes and rehearsals.

The same schedule of presenting the plays will continue for four or five weeks until the young actors begin work on final three acts plays which will wind up their summer experience for the summer. There are still some places available for interested children. Contact Mr. Wombarger at Cranbrook School for further information.



## Taking It Easy

Cooking takes on real glamor in a handsome, comfortable outdoor setting such as this one. Completely enclosed with colorful, translucent fiberglass panel fencing, a bar-mess, complete party or any eat-out occasion will be private, and free from wind and dust.

## Festival

(Continued from 1-D)

"The dome was about two-thirds full each night, said McLean.

"The box office was about the same as last year—there was no essential difference." He estimated the total intake to be somewhere between \$6,500 and \$7,000.

### OTHER ACTIVITIES

during the last half of the week included a limbo contest, folk dancing, a children's play and crafts demonstrations—all in Shain Park.

The limbo contest was dreamed up at the last minute by William Winzer and Ward Ouradnik. It took place Wednesday afternoon on the Shain Park lawn, beginning about 3 p.m. A local combo, the Marauders, played as those "under 12" and "over 12" shuffled under the bar. About 250 looked on.

### WINNERS "UNDER 12"

were first place, Katie Crosby, 11, of 1220 Buckingham Road, Birmingham; second place, Lynn Keaton, 9, of 4420 Squirrel Road, Bloomfield Township; and a close third place, Linda Kronfeld, 7, of 116 Suffed, Birmingham.

Winners "over 12" were first place, Sandy Heaverich, 12, of Ridgeland, Birmingham, and second place, Susan Reeder, 12, of Farmington.

### AMERICAN FIELD Service

(AFS) international folk dancers dominated the dance area Saturday afternoon as did the Choreographer's Workshop on Monday night.

And hundreds of children jammed the gold-skeletoned dome to see the Vanguard Theatre Children's Players do "King Midas and His Golden Touch."

In the crafts department, demonstrators were given during the

## Local Best Sellers

- Fiction**  
SHOES OF THE FISHERMAN—Morris L. West  
ELIZABETH APPLETON—John O'Hara  
THE GLASSBLOWERS—Daphne du Maurier
- Nonfiction**  
MY DARLING CLEMENTINE, the Story of Lady Churchill—Jack Fishman  
TERRIBLE SWIFT SWORD—Bruce Catton  
THE WHOLE TRUTH AND NOTHING BUT—Hedda Hopper

## Students Appear In Piano Recital

Nellie M. Pokorny presented her students in a piano recital at her home, 3111 Middlebury Lane, Birmingham, on June 15 at 2:30 p.m.

Her pupils include Ruth Styles, Jimmy Styles, Cassandra Clemmons, Roger Lurie, Barbara Harrison, Mary Ann Homrighous, Elizabeth Forshaw, Mary George, Pat Ramsey, Dawn Forshaw, Greg De Masco, Lori Lapides, Peggy Sokol, Greg Comey, Pam McCall, Jan Touran, Linda Cutler, Charles Forshaw, Laure Fretter, Laurie Ferguson, Bobby Ramsey, Mike Hillier, Cindy Wacker, Nancy Styles, Laurie Lean and Anne Ramsey.

## VILLAGE OF BEVERLY HILLS NOTICE OF PUBLIC HEARING

TAKE NOTICE that a public hearing will be held by the Village Council of the Village of Beverly Hills on Monday, July 15, 1963, at 8:00 o'clock P.M. in the Village offices located at 18500 West 13 Mile Road in said Village, for the purpose of considering the following changes, amendments and additions to Ordinance No. 29, being the Zoning Ordinance.

1. To change from a Single Family Residential 2 zone use to Parking-P zone use the following described property:

Lots 56 to 60, inclusive, of D. J. Healy's Golf-hurst Subdivision.

2. All persons interested will be heard. Objections to the proposed amendment or change should be filed in writing and it is requested that any such communications be submitted to the Village Clerk not later than July 12, 1963 so that they may be duplicated and forwarded to the members of the Village Council prior to the hearing.

Betty J. Chinn, Village Clerk

The Birmingham Eccentric Classified pages offer you a fine opportunity to sell your unwanted household goods.



Now, on all FOY-JOHNSON exterior paints...

## SPECIAL LOW PRICES DURING OUR "PAINT YOUR HOUSE" SALE

when you buy 5 gallons or more... any combination you choose.

Now paint your siding, trim, roof, porch, gutters and downspouts... the whole outside of your house or any part of it... at special savings when you buy 5 gallons or more of any Foy-Johnson exterior paint, in any combination.

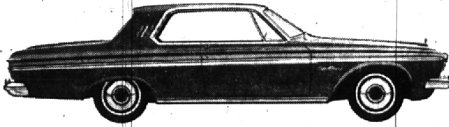


## PAINT & Wallpaper

### MIRACLE MILE

Shopping Center 332-7001

# PLYMOUTH'S STRESSLESS IS THE KEY TO THESE EXTRAORDINARY VACATION SPECIALS!



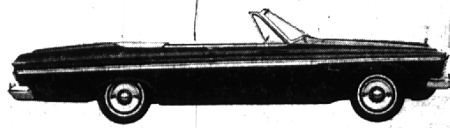
PLYMOUTH Sport Fury Bucket-Seat Hardtop for the "style-with-every-mile" vacationer



PLYMOUTH Savoy 4-Door Sedan for the "thrills-without-frills" vacationer



PLYMOUTH Savoy 6-Passenger Station Wagon for the "open-spaces-go-places" vacationer



PLYMOUTH Fury Convertible for the "sun-loving-fun-loving" vacationer

**SUCCESS—'63 PLYMOUTH!** Winner in 8 out of 10 events for standard production V-8 models, in competition with Ford and Chevrolet in official tests at Riverside, California!

**SUCCESS—'63 PLYMOUTH!** Top point scorer of all class winners in the 1963 Pure Oil Performance Trials!

**SUCCESS—'63 PLYMOUTH!** Mobil Economy Run class champion... making the seventh year in a row that Plymouth has won a class championship in this tough, competitive test of economy-endurance!

**SUCCESS—PLYMOUTH'S WARRANTY!** America's longest and best new-car warranty. 5 years or 50,000 miles! Proof that you can have confidence in the quality built into every Plymouth!

**SUCCESS—PLYMOUTH SALES!** Establishing new records with each succeeding month. Now up 52% over last year!

**SUCCESS—YOU AND PLYMOUTH!** Let your search for a new car end in success with one of these extraordinary vacation specials now. Go Places—and save—by going first to your Plymouth-Valiant Dealer!

\* Your Authorized Plymouth-Valiant Dealer's Warranty against defects in material and workmanship on 1963 cars has been expanded to include parts replacement or repair, without charge for required parts or labor, for 5 years or 50,000 miles, whichever comes first, on the engine block, head and internal parts, transmission case and internal parts (excluding manual clutch); torque converter, drive shaft, universal joints (excluding dust covers), rear axle and differential and rear wheel bearings, provided the vehicle has been serviced at reasonable intervals according to the Plymouth-Valiant Certified Car Care schedule.

## MAKE YOUR MOVE TO PLYMOUTH NOW!

