

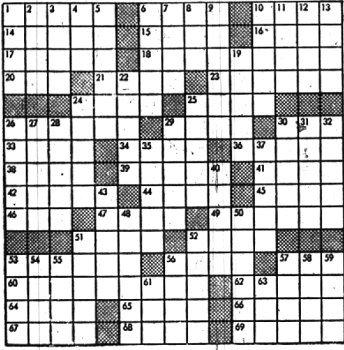
**ACROSS**

1 Dumbdred  
2 Troubles  
10 Clasp  
12 Delight  
15 Sked  
17 Proprietion  
17 Twelve  
18 Cabinet-maker  
20 Behold  
21 Skamp  
22 Evident  
23 Vegetable  
24 Revelations (slang)  
25 Inhabitants of swamps; colloq.  
29 Habit  
30 Medical  
31 Metalic  
32 elient  
33 College in England  
34 Staff  
35 Solitary  
39 Crates  
41 Among  
42 Family  
44 Chip  
45 Corn bread  
46 Bag

**DOWN**

13 Haven  
19 Roof  
22 Plane  
23 Scope  
25 Destroy  
26 Venous  
27 Haze  
28 Stimulant  
29 Shapless  
30 No. American  
31 Thicker  
32 Thicker  
33 No. American  
34 Thicker  
35 Solitary  
39 Crates  
41 Among  
42 Family  
44 Chip  
45 Corn bread  
46 Bag

Answers to Puzzle Will Be Found on Page 7-D



PUZZLE NO. 763

# BRIDGE in BIRMINGHAM

By BUD MAYBAUM  
Southern Michigan Bridge Association

Our interesting hand for today displays how a cleverer player may lay a trap for the opponents to err in their defense. The one over-trick can often mean a top board and we do need misplays to win tournaments.

Dottie and Bud Dreifuss, of the Birmingham area, were the players of this hand and are quite often winners in Birmingham tournaments. Their play of the hand is well worth watching.

**NORTH**  
(Bud Dreifuss)  
♠ A Q 9  
♥ 10 4  
♦ 9 5 2  
♣ Q 8 6 4 3

**EAST**  
(Dealer)  
♠ 6 5  
♥ 2  
♦ A J 10 3  
♣ A 10 9

**SOUTH**  
(Dottie Dreifuss)  
♠ K J 10 8 3 2  
♥ A J 3  
♦ K 7  
♣ 5

North and South vulnerable.  
The bidding:  
West North East South  
pass pass 1 ♥ 1 ♠  
2 ♥ 2 ♠ pass 4 ♠  
all pass

Opening lead: 2 ♥

When Dottie's husband displayed the dummy, she could see that the contract was iron-clad, but how to make the over-trick was her problem. The opening lead caught East's queen of hearts with dealer's ace. Dottie now played a low spade and won it with the ace and continued with the queen. The trump did break two-two, but she continued with the nine of spades which she allowed to win. The play of the third spade was the important play. This showed to the opponents that the board could not trump a heart or may not have a re-entry.

Dottie played a low club from dummy and went in with the king, which West allowed to win, but West did win the return of a low club.

West still had hopes that the contract could be defeated if South had two clubs and two diamonds, so he returned the five of hearts which East won. East did play a third heart that Dottie won in the closed hand, played the Jack of clubs, overtook it in the dummy and discarded her losing diamond on a low club.

RECENT WINNERS in Birmingham tournaments include: Mary and Sandy Stevenson; Ollie Swartzwalder and Louise Benjamin; Pat and Herb Beyer; Rene Ross and Ann Haskin; Esther Clarke and Hilda Murphy; Charles Thummer and Steve Taylor; Betty Pope and Phyllis Malstrom; Joe Cox and Tom McMillan; Barbara Madvin and Roz Holt; Dorothy Robertson and Dolly Olson; Adelaide Westrate and Isabel Guterman; Dave Cooper and Ira Benjamin; Edwin V. Clarke and Mary Matchie; Fran Greenhalgh and Pat Holloway; Evelyn Smith and Ollie Swartzwalder; Dottie and Dr. Barton; Stewart Murphy and Jim Crab.

JUST SO THAT you will not be disappointed if you attempt to

## School Libraries Set Hours for the Summer

Birmingham Public School libraries are open again this summer. The libraries are open free of charge to any student or adult resident of the school district.

Secondary school libraries are now open through Aug. 16, with the exception of Barnum Junior High, which will be undergoing an extensive expansion and renovation program.

The library hours are as follows: Seaholm library—Monday through Friday, 7:30 a.m. to 4 p.m.; Groves library—Monday through Friday, 8 a.m. to 11:30 a.m. and 12 to 3:30 p.m.; Derby—Monday through Friday, 8 a.m. to 11:30 a.m., June 17 through Aug. 16. Groves and Derby Schools are providing library services for the first time.

THE SCHEDULE for the elementary school library service is as follows: Adams—Mondays through Fridays, 9 a.m. to 11:30 a.m.; July 17 through July 26. Baldwin will not be open. Beverly—Tuesdays and Thursdays, 9:30 a.m. to 1 p.m.; June 18 through July 25. Blount—Mondays—Tuesdays and Thursdays, 9:30 a.m. to 11:30 a.m.; June 24 through August 8. Franklin—Mondays, 8:45 a.m. to 12:45 p.m.; June 24 through July 29.

Greenfield—Tuesdays and Thursdays, 9 a.m. to 11:30 a.m.; June 18 through August 8. Harlan—Wednesdays, 10 a.m. to noon and 1 p.m. to 3 p.m.; June 19 through July 24. Meadowlake—Mondays through Fridays, 9:30 a.m. to 11:30 a.m.; June 17 through July 26. Midvale—Tuesdays and Thursdays, 12:30 p.m. to 3 p.m.; June 18 through August 8. Quanton—Mondays and Thursdays, 9:30 a.m. to 11 a.m.; June 17 through August 8. Pembroke—Mondays and Thursdays, 9 a.m. to 11 a.m.; June 17 through August 8. Pierce—Mondays, Tuesdays and Wednesdays, 9:30 a.m. to 11:30 a.m.; June 17 through August 8. Torry—Mondays and Thursdays, 10 a.m. to 1:30 p.m.; June 18 through July 25. Valley Woods—Mondays, Wed-

## Summer Programs For Youngsters Set At Science Institute

Indoor auditorium programs for children, which include color film demonstrations and use of museum materials, will be held at the Cranbrook Institute of Science during July and August. All sessions begin at 1 p.m.

Topics for the Junior-Junior sessions, primary grades, are "Pets," July 3 and Aug. 1; "The Sea," July 11 and Aug. 8; "Conservation," July 18 and Aug. 15; and "Animals That Fly," July 25 and Aug. 22.

Topics for the Junior programs, fourth grade and up, include "The Solar System," July 2 and July

Make a list of those "don't needs" today. Dial MI 4-1100 and a Classi Lassi will help you.

## Local Pianist Will Play for Convention

Nancy Wilson, Southfield High School senior, has been invited to play piano for the International Kiwanis Convention at Atlantic City, N.J. from June 30 to July 4.

Miss Wilson is currently attending Sherwood Music School in Chicago, where she is a student of Mischa Kottler.

She was soloist with South Oakland Symphony in 1961. She plays viola in the Southfield Junior Symphony and high school orchestra.

MISS WILSON sings in the Madrigal and concert choirs at Southfield High School and is a member of Birmingham Musicale. For the past two summers she attended Interlochen Music Camp. Miss Wilson is a member of National Honor Society and president of the Tuesday Musicale Student League.



### So Much For So Little

This charming compact home in Birmingham affords ample and pleasant facilities for family living. The living room and separate dining room are newly carpeted and there are three large airy bedrooms with additional finished space on the second floor. Utilized for cabinet drawers and fully finished closets. The large screened porch has a beamed ceiling. And perfect for casual summer entertaining while the tiled basement serves for winter activities. And, all for only — \$17,500.

## Walsh, James & Wasey Co.

Realtors Since 1918  
431 S. Woodward Ave. Birmingham  
Midwest 4-6500  
Detroit, JO 4-6033

## YOUR GARDEN CLINIC

This is NOT a Special one-day deal set up to answer a few questions for you. What it is that it is a—

### PERMANENT CLINIC

It is open about 308 days a year. The hours are usually 8:00 a.m. to 5:30 p.m. The people to help you are OUR STAFF—(3 of whom have been with us 16 years, so they do know something about solving problems).

- EXAMPLES:
- These birch leaves are full of white streaks & areas.
    - Caused by LEAF MINERS.
    - Should have been sprayed May 15th to 25th to control first brood.
    - To handle second brood spray July 1st, and again 10 to 14 days later.
    - Use 50% MALATHION emulsion (1½ teaspoons to 1 gal H2O) or ISOTOX (1 tablespoon to 1 gal).
  - My lawn has circular dead areas 8 to 12" in diam.
    - Chase the dogs away.
    - My lawn has irregular brown dead areas.
      - Probably a fungus disease.
      - Determine whether they are enlarging or not.
      - If they are enlarging it is probably fungus and should be stopped immediately.
      - DO NOT WATER; SPRAY WITH ACTIDIONE.
  - My lawn is fading and the blade tips are yellowing.
    - Probably needs the second application of FERTILIZER—PLUS WATER.
  - THIS IS NOT A QUESTION — IT IS SIMPLY SOMETHING WE FEEL YOU SHOULD KNOW.
    - Watering in the late afternoon or early evening is a wonderful way to promote fungus disease.
    - Frequent shallow waterings encourage BENT GRASSES and CRABGRASS, QUACK GRASS, CHICKWEED, and other horrible nuisances.
    - Deep, infrequent watering promotes the deep rooted permanent bluegrasses and fescues.
  - The euonymus is covered with these white specks.
    - It is EUONYMUS SCALE
    - Spray with MALATHION 50% emulsion (2 to 3 teaspoons to a gallon of water) during first week of July and again in early September.
  - These brown lumps on the yews and flowering crabs have sticky stuff dripping on to the plants below.
    - These lumps are SOFT BROWN (LECANIUM) SCALES. The sticky stuff is sap from the tree or bush (they take out a bit more than they can use).
    - Spray with ISOTOX or McCLELLAN-BALL SPRAY or MALATHION AFTER they hatch—which will be about July 5th.
  - Disgusting beetles are ruining our roses and peonies.
    - Undoubtedly ROSE CHAFERS
    - Spray plants every 5 days and the flowers every day until under control.
  - And so on, ad infinitum.
    - Bring your problems to us.
    - Bring samples of the troublesome bug, the faded leaves, the wormy fruit.
    - It is YOUR GARDEN CLINIC.

**McCLELLAN-BALL CO.**  
Everything for the Yard and Garden  
880 S. WOODWARD, BIRMINGHAM, MICH.  
FREE AREA DELIVERY Midwest 4-4129

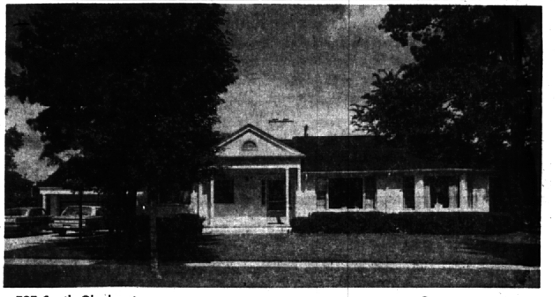
## UNUSUAL...

to find, in a superior location, such surprisingly spacious rooms and

- ... Panelled Library
- ... Family Room
- ... 3 Bedrooms
- ... 2 Baths
- ... Tiled basement
- ... Patio

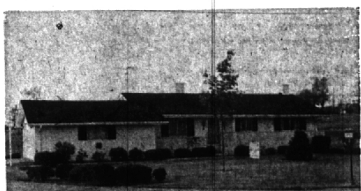
You must see it to believe it? Even the price is surprising at

\$34,500



797 South Glenhurst

Lighting your way to better living  
**BENJAMIN & BISHOP, INC.** REALTORS  
259 S. Woodward, Birmingham, Michigan MI 4-3232 — JO 4-5728



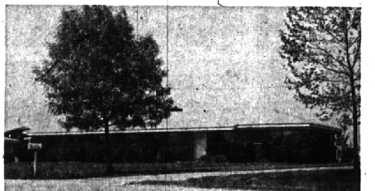
A HIDDEN SURPRISE awaits you in this superb modern bi-level. There are 2 full living levels, both overlooking rolling Forest Lake Country Club, 3 excellent bedrooms, 2 sparkling tile baths, relaxing family room, cool patio, and att. 2 car garage. EXTRAS GALORE! \$33,900.



LAKEFRONT—Here's a perfect combination of new and old that rambles across a wooded lakefront site. With all major rooms enjoying a water view, there are 3 twin bedrooms, "quiet-hour" den, a truly striking 20 x 21 foot farm kitchen, formal dining room, 3½ baths, and 3 car garage. FUNI \$54,900.



BLOOMFIELD VILLAGE—Your drive to this appealing and well located Colonial is along a quiet tree-lined street. There are 3 excellent bedrooms, "quiet-hour" library with an adjoining summer porch, large formal dining room, 2½ baths, tiled recreation room, and att. 2 car garage. YOUR ANSWER? \$38,500.



VACATION AT HOME—Complete with a 16 x 34 foot swimming pool, you'll find this long and low ranch still within your budget. 3 nice bedrooms, 2 convenient baths, huge family room with Bar-B-Q adjoining the pool, and att. carport. CALL NOW! \$24,900

# HALL & YOUNG

REALTORS Inc.  
"Twin offices"  
BIRMINGHAM 345 S. Woodward MI 6-7900  
BLOOMFIELD 4114 W. Maple MA 6-5900  
OPEN TILL 9 P.M.

Showcase of homes  
"Showcase" features each home listed with Hall & Young in lighted photos and color slides. RESULT — more effective sales exposure for sellers and easier selection for buyers.