

BRIDGE

in BIRMINGHAM

By **BU D MAYBAUM**
Southern Michigan
Bridge Association

In the recent Michigan State Championships played at the Detroit-Leland Hotel Lynn Goldsmith of Birmingham was on the winning pair that won the mixed pair event. I believe that this is the first time a father and daughter combination won this event.

Lynn and her husband are both very fine players and their teachers were Lynn's parents, Mr. and Mrs. Sidney Heinrich, who are both life masters. Lynn's ability can well be seen in today's hand which was bid and played to its utmost.

North and south vulnerable. Dealer is south.

NORTH
 ♠ 6 4
 ♥ A K 7 6 2
 ♦ Q J 4
 ♣ A 2

WEST
 ♠ A J 8 7 5 3 2
 ♥ 8 3
 ♦ 7
 ♣ Q 10 8 5 3

EAST
 ♠ void
 ♥ J 10 9 4
 ♦ 10 9 8 5 3
 ♣ Q 10 8 5 3

SOUTH (Lynn Goldsmith)
 ♠ K 10 9
 ♥ Q 5
 ♦ A K G 2
 ♣ K J 6 3

The bidding: South West North East
 1 NT 2 ♣ 5 NT Pass
 6 NT all pass
 Opening lead: 8 ♣

It is true that if West had opened a club or spade, Lynn's work would have been lessened, but the heart lead gave her the challenge. She could see eleven tricks if the club hook worked and only defeat if it didn't work, so she led the ace of clubs and took the club hook. Lynn felt sure the hearts would not break, but she played three rounds to make sure. She then took her four diamond tricks and her third

club trick. This left her with three spades in each of the West, North and South hands. She now led the king of spades and West could either take or refuse the trick, either take or refuse the trick, that suit and contract fulfilled.

We congratulate Lynn on winning this championship and her excellent execution of the Strip and end play that brought in this contract.

KAY CLINTON wishes to announce that the Monday night tournament at the Community house in Birmingham will close for the summer. The game on June 23 will be the last until the second Monday in September, when the game will resume.

Recent winners in Birmingham Tournaments include Sandy Stevenson and Joan Distler, Barbara Madrin and Tuckie Stinson, Jane Ford and Loreta McE. Pat Holloway and Fran Greenhalgh, Dottie Barron and Ollie Swarzwald, Steve Taylor and Bob Thurston, Stewart Murphy and Bill Aher, Nancy Keene and Ann Osborne, Helen Boothman and Eleanor Haack, Maxine Mordqn and Burt Mann, June Springs and Lois Mann, Mr. and Mrs. Kirk Hall, Mr. and Mrs. A. R. Bottler, Terry O'Hearn and Shirley Campbell, Mr. and Mrs. Gremley.

SOUTHERN Michigan Bridge Association will not hold a Winner's game in July as it is our policy not to hold this game in a month that we are conducting a Sectional Tournament. We will have our annual Mt. Clemons tournament commencing July 11, through the 14 at the Clinton - Gables Hotel. This tournament will be reported here and we hope you will attend.

On July 27, when the Nationals are being held in Los Angeles, we will be conducting a Charity game

DOWN TO EARTH

Railroad Ties Are Useful In Garden Area Projects

Garden areas must be designed to include all members of the family.

Recently I visited a young couple and they planned to make a unique sand box "with a future." Against the side of their garage they were placing railroad ties to form an enclosure to hold sand. In the future it would make an attractive raised flower bed.

Most railroad ties come in eight foot lengths.

Before their current popularity it was possible to call a local railroad office and secure all discarded you were willing to haul away. In the long run it is better to purchase new ones because they are not split or gouged out for track fitting.

It takes two strong men to lift one tie. If you have ever chased down a railroad track to deplete a pile like I have, you will know it is cheaper to buy them new and have them delivered to the spot where they will be used. Be sure to use a preservative on new railroad ties before using.

THIS IS THE time of year to court the birds because a single wren will feed 500 insects to its young in one afternoon.

Do you have a bird bath incorporated in a flower bed? Designers advise against placing such a piece of sculpture in the middle of a grass plot.

If you want to have some fun, play a bird calling record in your garden and watch the birds move in to hear the concert.

The owners of rolling home acres in Oakland County should be interested in the handbook "Conservation For Every Man," Brooklyn 25, Botanical Gardens, Brooklyn 25, New York. It tells how to handle land to the best advantage.

If you have low marshland on your property, inquire from your county agent how you may build a pond to attract wild life.

going to Iceland. She played golf 30 miles south of the Arctic Circle. In this republic with a population approximately 170,000, horticulture is presented at its best.

THERE ARE warm springs in abundance and in the middle of the golf course is a large greenhouse bursting with bright colored flowers.

Roses sell commercially for a dollar a dozen. Growing techniques are patterned for their short days. There is an abundance of free heat and electrical power coming

from their fjords. Grass doesn't need mowing because it is a semi moss. Hot water is piped over the mountains to Reykjavik for heating the homes.

A LOVE of gardening can open many exploring trips. Today you have heard about Newark, New York and Iceland, take your choice.

By **ALICE WESSELS BURLINGAME**
Special Writer for The Birmingham Eccentric

AUTHENTIC

Both architecture and value. Barn Red, on a tree lined dead-end street close to everything.

- ... Two bedrooms
- ... Library
- ... 1 1/2 baths
- ... Rec room
- ... Huge screened porch

Owner transferred. See it today—you'll love it!
\$23,500.



Mrs. Burlingame

from their fjords. Grass doesn't need mowing because it is a semi moss. Hot water is piped over the mountains to Reykjavik for heating the homes.

THE WORLD FAMOUS Rose Festival will be held at Newark, New York, by Jackson and Perkins, June 22-26. Some of our local people may wish to visit this rose mecca. Newark is located 32 miles east of Rochester and 60 miles west of Syracuse. Leave the New York State Thruway at Exit 43. Here the visitor will see seventeen acres of roses. There are more than 35,000 roses in flower. All of the roses are labeled and many illustrated gardens have been made to show the rose fancier how to create a duplicate garden on his own home grounds.

A LOVE of gardening can open many exploring trips. Today you have heard about Newark, New York and Iceland, take your choice.

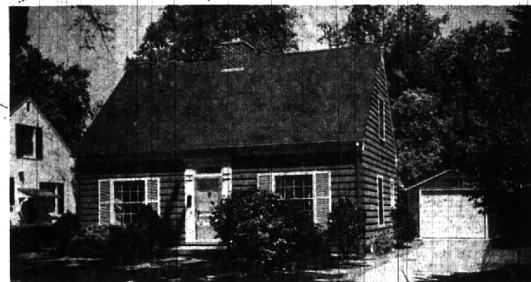
DEVELOPERS OF
Colonial Communities

CONCORD GREEN
 EAST GREENWICH GREEN
 WEST GREENWICH GREEN
 NOW—METAMORA GREEN—

Wm. J. PULTE, Inc.
 MASTER BUILDERS
 BIRMINGHAM
 MI. 6-0105

PULTE - BUILT - MEANS - BETTER - BUILT

You will find many bargains in The Eccentric Classified Columns.



1864 Fairview

Lighting your way to better living
BENJAMIN & BISHOP, INC. REALTORS
 259 S. Woodward, Birmingham, Michigan MI 4-3232 - JO 4-5728



A BEAUTIFUL PRIVATE BEACH EXCLUSIVELY FOR HOME OWNERS OF PINE LAKE ESTATES

Let others drive the hot miles to the beach. At Pine Lake Estates all water activities—swimming, boating, fishing, are at your doorstep. Enjoy living in a relaxed country atmosphere, with gentle rolling hills, spacious grounds, and winding streets. Live in a mature community among good neighbors, in one of Michigan's finest school districts. Owning a home in Pine Lake Estates makes part of everyday—Vacation.

Pine Lake Estates

IN THE BLOOMFIELD HILLS SCHOOL DISTRICT

Approved home value design as featured in Better Homes and Gardens



THE HYANNIS PORT...
 Provincial Four Bedroom Multi-Level with 3 1/2 Baths • Formal Dining Room • Owner's Suite with Private Bath • Paneled Family Room • Large Country Kitchen with Breakfast Room • Door Wall • Frigidaire Built-ins • 2 1/2 Car Attached Garage • Large Center Entrance Foyer • First Floor Laundry • Luxury Carpeting.
 including 100' lot **\$31,950**



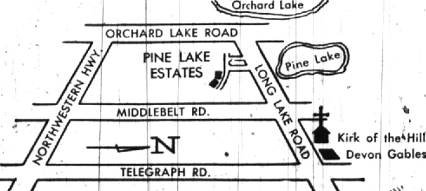
THE NANTUCKET...
 Gracious Four Bedroom Colonial with 2 1/2 Baths • Formal Dining Room • Owner's Suite with Private Bath • Paneled Family Room with Natural Fireplace • Gourmet Kitchen with Large Breakfast Room • Frigidaire Built-ins • Full Basement • 2 1/2 Car Attached Garage • First Floor Laundry.
 including 100' lot **\$29,900**

Every Convenience including City Water, Sewers, Paved Streets, Gas Heat

HOWARD T. Keating
 DEVELOPMENTS
 Corner of Lahar & 13 Mile Road
 Birmingham, Michigan

FRIGIDAIRE
 Enjoy happier, more carefree living with Frigidaire built-in range, oven, dishwasher.

Model Phone: MA 6-3578
 Office Phone: MI 6-1234



Open daily and Sunday
 11 A.M. - 8 P.M.
 Closed Thursday

Interiors by **WIGGS**

EXCLUSIVE TRADE-IN PROGRAM