

Realtor Named Sales Manager

Robert E. Miller, 4097 Reduth Court, Birmingham, has been named general sales manager for the Pembrock Building, Inc., with offices in the building.

Miller, a real estate broker, was formerly with James Martin & Associates, Birmingham, a native of Detroit, he is active in both local and state-wide real estate circles.

LEARN SCUBA DIVING

ON BEAUTIFUL UNION LAKE
WAYNE-OAKLAND SCHOOL OF DIVING
570 Bird Street, Birmingham

Orion L. Schultz, Director
Nationally Certified Instructor
State and National Champion

16 Hours—Equip. Furnished
\$10.00 TOTAL COST
Phone MI 6-6518 or 363-7710

Special couplings
parking facilities

MODELS

sales - service
HOBBY SUPPLIES

CRAFTS STAMPS COINS
OVER 50,000 ITEMS
TRAINS PLANES BOATS

22524 WOODWARD AVENUE
FERNDALE 20, MICHIGAN phone LI 3-2242

What's in store for stocks?

That's never easy to answer, we admit.

But with the help of our Research Department in New York, we've just put together a two-hour answer that should make a lot of sense to any seasoned investor.

If you'd like to hear it—a thorough-going discussion of basic trends in our economy, a series of specific suggestions to meet various situations and objectives during the months ahead—then don't miss our Stock Market Forum.

We're holding it on Monday evening June 17th, at the Oakland Hills Country Club, starting at 7:30 P.M. sharp.

Bullish or bearish we think you'll find these two hours well spent, think they should prove extremely helpful to even the most experienced investor.

There's no charge connected with the Forum, of course.

If you'd like to come, simply call and tell us you'll be there.

MERRILL LYNCH, PIERCE, FENNER & SMITH INC.

MEMBER NEW YORK STOCK EXCHANGE AND OTHER PRINCIPAL STOCK AND COMMODITY EXCHANGES

MERRILL LYNCH BUILDING, DETROIT 26
(Congress & Shelby)

Telephone: 963-4670 or Enterprise 6284
Ext. 309 (toll free)

Behind The Store Fronts

With
**ANGUS
McKELLAR**

The Birmingham area has often enjoyed the distinction of being first in many things . . . and so again (appropriately at Arts Festival time) a new art gallery opened this week at 165 Pierce St., the former location of a Sheetz Candy Co. branch.

A new concept in art merchandising, Kenilworth Art Galleries will deal exclusively in oil paintings by competent artists from all over the world who have already established reputations in their homeland. The dominant idea throughout the entire project is to bring top-quality work to art lovers at reasonable prices. The art offered will span the 17th through the 20th centuries.

"The emphasis will not be abstract art," according to managing director Eleanor Harr.

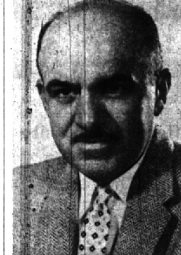
From time to time, the artists will appear locally in one-man shows. The first such show is tentatively set for about Aug. 1 when Andrew Gisson, the French Impres-

sionist, will come to Birmingham. The Birmingham gallery is planned as the first in a number of such galleries throughout the country. An Arbor is scheduled to become the second site about Aug. 1. Nassau in the Bahamas, about Sept. 15, and Chicago's North Shore somewhere in between. Owners are two Detroit-area businessmen.

For 17 years, the Pennell family was a name in the food business when they operated Pennell's Doughnut Shop on S. Woodward across from Suburban Motors.

Well, the new Pennell's Golden Dome, on the south side of E. Maple—a quarter mile or so outside the Birmingham city limits—is quite a bit different from that doughnut shop we used to know. Owned by Mrs. Florence Pennell and daughter Dorothy, the new establishment contains a plush cocktail lounge with an unusual bar arrangement which permits serving either side by bartenders Mitt Truman or Doff Pettit.

A piano bar (in the form of a musical note) separates the cocktail lounge from the dining area where luncheons are served from 11 a.m. and dinners from 6 to 11 p.m. Steaks are the Golden Dome's specialty. Jimmy North is manager. His host of friends will recall when he was whimsically known as the Doughnut King of Birmingham at the S. Woodward address, now the location of a Bob Borst used car lot.



FRED E. PANTILLON

Sanders Selects Vice-President

Fred E. Pantillon, 4192 Ruze Circle, Birmingham, has been named a vice president of Fred Sanders, Detroit-based bakery and confectionery manufacturer, it was announced by President John M. Sanders.

Pantillon, who was appointed sales manager in 1962, joined Sanders in 1955 as a store boy and has held positions as store manager, retail district manager, sales assistant and assistant sales manager. Pantillon is a native of Detroit and the son of Sanders' first pastry chef, who learned to make fine pastries in his native Switzerland.

Fred Sherman of Sherman Shoes on W. Maple is a happy host these days to son Larry (who formerly managed the local store), his wife Jane and grandson David. The three weeks will be short ones until the younger Sherman family returns to Miami where Larry is in the hotel business at Hotel Martique.

The folks at the McClellan-Ball Co., 150 S. Woodward, have completed plans for their annual indoor "outdoor" patio demonstration of how to go about a Bar-B-Que cookout. You are all invited to share in the tasty tidbits from their Bar-B-Que this Saturday.

Douglas Ewen of realtors Walsh, James & Wescy Co., 431 S. Woodward, is in St. Joseph Hospital in Pontiac. His room number is 311, for the benefit of his friends who would like to drop him a card.

and Mickey Kwisak, watchmaker at The Time Shop, 124 Bates, was recently re-elected president of the Watchmakers Guild of the State of Michigan.

Executive at IBM Will Move Here

Thomas Nebel, formerly International Business Machines Corp. branch manager at Toledo, has been promoted to assistant to district manager for IBM in Detroit. He will coordinate IBM data processing sales activity in Michigan, northern Ohio and northern Indiana.

Mr. and Mrs. Nebel and their four children will live at 5560 Lakeview Road, Birmingham.

Machus Receives Award for Coffee

Machus Restaurant & Pastry Shoppe, 165 W. Maple, Birmingham, has received the 1963 Golden Cup Award from the Coffee Brewing Institute, Inc.

Machus' was given a plaque with a gold cup and saucer extending from it. The plaque reads "for producing a fine beverage coffee in accordance with the highest brewing standard."

NEWCOMER?

Have you, or has someone you know, just moved to BIRMINGHAM

Your Welcome Wagon Hostess will call with gifts and friendly greetings from the community.

Midwest 4-0516



WELCOME WAGON

Williams Research Begins Expansion

Williams Research Corp., a producer of gas-turbine engines, will expand its manufacturing facilities at Walled Lake.

Construction of a plant addition that will increase the company's production area by 80 per cent was started earlier this month. When completed, in July, 1963, the new quarters will house enlarged assembly, inspection, quality control, precision balancing operations and will permit expansion of engineering and testing departments.

Williams Research developed the first gas-turbine outboard motor, a gas-turbine powered jeep, and the world's smallest turbojet engine. It manufactures a series of small aircraft gas turbine engines as well as special purpose turbines for a variety of military uses.

2 Area Men Elected By Budget Society

The National Society for Business Budgeting has elected two area men to its executive staff. Clarence C. Benedict, 388 N. Glenary, Bloomfield Township, general auditor of Chrysler Corp., was named secretary.

John W. Jacobs, 7230 Parkhurst, director of Finance of the Wolverine Tube Division of Calumet & Hecla Inc., Allen Park.

Former Resident Wins Promotion

The promotion of Leo J. Linsenmeyer on June 1 to the position of sales manager, OEM sales, has been announced by Victor Manufacturing & Gasket Company, Chicago.

Linsenmeyer is a former member of the Beverly Hills Council and served as road commissioner for the village. He moved with his family to Chicago in 1952 when he was promoted to the post of assistant sales manager, in the firm's Chicago headquarters.

Course Completed By Businessman

Leo F. Kress Jr., assistant manager in Birmingham for the Manufacturers Life Ins. Co. has just completed a course of study in the principles of agency management.

The one-week Management Orientation School was held at the Hartford, Connecticut headquarters of the Life Insurance Agency Management Association, a research organization of more than 400 life insurance companies.

To Round Out This Complete Building Service, Barron Development Co. Offers Each Buyer:

1. Architectural service; home designed to the buyer's specifications or change any part of the model plans or specifications to suit the buyer.
2. Color coordination counselling; professional advice as to proper color harmony throughout the interior and exterior of the home.
3. Plans and specifications; each buyer receives an individual set of plans and specifications drawn up for him before the home is

SHETHAR DAVIS

B'ham Man Named Head Of Marketing

Wabash Magnetics Inc. of Wabash, Ind., has appointed Shethar Davis, 2352 Yorkshire, as director of marketing.

He started with the company in 1962 as manager of product and market research. From 1948 until 1962 he was with the General Electric Co.

A graduate of the U. S. Naval Academy class of 1944, a studied business administration at Russell Sage College, Albany, N.Y., Davis, his wife, Jane, and their three children, Susan, 5, Louis, 3, and Ellen, born last April, will move to 622 Valley Brook Lane, Wabash.



COOPERATING to build homes in Oakland County are (from left) Howard T. Keating, S. Brooks Barron and Donald S. Condon.

2 Firms Join Efforts To Build Area Homes

The Howard T. Keating Co. of Birmingham and the S. Brooks Barron builders plan to build and sell custom homes, anywhere in Oakland County.

The first four models offered by the Keating Co. are in the Peabody Orchards, Bloomfield Hills. Models have received the Better Homes and Gardens magazine Approved Value Design Award.

The Howard T. Keating Co. has been in land development in the Birmingham - Bloomfield area for more than 25 years. S. Brooks Barron brings more than 25 years of experience in custom building homes to the combination.

DONALD S. Condon, vice president and general manager of the Keating Co., states: "This is the first time a large builder and a land developer have put their efforts and purchasing power behind a custom building program of quality homes throughout an entire county, rather than confined to a single subdivision development."

Howard T. Keating has collected a listing of more than 1,000 private lots in Oakland County in addition to lots in any of his subdivisions. This means that a buyer has an unrestricted choice of home location in Oakland County.

TO ROUND OUT This Complete Building Service, Barron Development Co. Offers Each Buyer:

1. Architectural service; home designed to the buyer's specifications or change any part of the model plans or specifications to suit the buyer.
2. Color coordination counselling; professional advice as to proper color harmony throughout the interior and exterior of the home.
3. Plans and specifications; each buyer receives an individual set of plans and specifications drawn up for him before the home is

Elected

Frank A. Salaki, 5349 Van Ness Court, Bloomfield Hills, has been elected president of the Detroit Chapter of the Michigan Society of Professional Engineers. He is president of Survey Engineering Corp. in Detroit.

The Shelby AC FORD COBRA!

The most fascinating sports car in the world!

We are sorry that delivery was delayed last week.

But you can see it now at

HAROLD TURNER, Inc.
464 S. Woodward Birmingham MI 4-7500

LIGHTS! LIGHTS! LIGHTS!

MORE LIGHTS HAVE BEEN ADDED . . . FAIRWAYS IMPROVED AND WATERED

No need to rush home from work to get to the golf course before dark.

Night Golf . . . 2549 yds.
Daytime . . . 3617 yds.

9 HOLES \$1²⁵
18 HOLES \$2⁰⁰

RESERVATIONS CALL 689-2233

NORTHWOOD GOLF COURSE

30-TEE DRIVING RANGE
15 MILE AND CROOKS RD. - 2 MILES EAST OF WOODWARD

Hoagberg Named Regional Manager

Appointment of Eric O. Hoagberg as Kelvinox regional manager for Latin America was announced today by G. T. Etheridge, vice president of Kelvinox International.

Hoagberg will be responsible for sales and marketing of Kelvinox home appliances and commercial refrigeration products through 38 distributors and licensees in Latin America and the Caribbean. He will continue to be headquartered in Detroit.

He resides at 5763 Burnham, Bloomfield Hills, Mich., with his wife and daughter, Karen Heidi, 1.

Hang Your Friends!

PRESS-ON PLASTIC FRAME

ADHESIVE STRIP STICKS TO ANY SMOOTH SURFACE WITHOUT MAKING

BACK VIEW CAN BE MOVED WITHOUT LOSS OF ADHESION

3 FOR ONLY \$1.00 (POSTAGE PAID)

IDEAL FOR SHARP PHOTO'S UP TO 3 1/4" X 4 1/2"

PRESS-ON PLASTIC FRAME CO. BOX 13, LATHROP VILLAGE, MICH.

VILLAGE OF BEVERLY HILLS ORDINANCE NO. 71

AN ORDINANCE TO AMEND ORDINANCE NO. 29 ENTITLED "AN ORDINANCE REGULATING AND RESTRICTING THE HEIGHT, NUMBER OF STORIES AND SIZE OF BUILDINGS; THE SIZE OF OPEN SPACES; THE DENSITY OF POPULATION; THE LOCATION AND USE OF BUILDINGS AND LAND FOR TRADE, RESIDENCE AND OTHER PURPOSES; CREATING DISTRICTS FOR SAID PURPOSES AND ESTABLISHING THE BOUNDARIES THEREOF; PROVIDING FOR CHANGES IN REGULATIONS, RESTRICTIONS AND BOUNDARIES OF SUCH DISTRICTS; DEFINING CERTAIN TERMS USED HEREIN; PROVIDING FOR ENFORCEMENT; ESTABLISHMENT OF A ZONING BOARD OF APPEALS; AND IMPOSING PENALTIES FOR THE VIOLATION OF THIS ORDINANCE."

The Village of Beverly Hills Ordinance:

Section 1.01. That Ordinance No. 29, being the Zoning Ordinance, be and the same hereby is amended by amending the Zoning Map attached thereto and made a part thereof as follows:

That the following described property is changed from a single family residential I zone use to Non-Retail Business, B-1 zone use, to-wit:

A parcel of land located in the Southeast 1/4 of Section 2, Town 1 North, Range 10 East, Village of Beverly Hills, Oakland County, Michigan, more particularly described as beginning at a point on South line of Section 2, which point is S 89° 42' 07" W 485 feet from Southeast corner of said section 2; thence continuing S 89° 42' 07" W 150 feet; thence Due North 333 feet to the place of beginning, containing 1.15 acres, more or less.

Section 2.01. Public hearing having been held hereon on June 3, 1963, and the statutory notices having been published and mailed, the provisions of this Ordinance are hereby declared to be immediately necessary for the preservation of public peace, health and safety and are hereby ordered to take effect immediately upon publication.

Made and passed by the Village Council of the Village of Beverly Hills, Michigan, on the 3rd day of June, 1963.

MARVIN B. GLINE, President
BETTY J. CHINN, Clerk