

BRIDGE



By **BUD MAYBAUM**
Southern Michigan
Bridge Association

You can see where both East and West were helpless.

SOUTHERN MICHIGAN'S next winner's game will be held at the YMCA in Birmingham on Sunday, June 16 at 4:30 p.m. Hope to see you there. Come early and leave early.

Recent winners in Birmingham tournaments include: Dorothy and Charles Thumser; Jane Nichol and Phyllis Gilchrist; Laine and Burt Mann; Peg Kohn and Jerry Marchette; Stewart Murphy and Bill Asker; Guido Beal and Grace Conlan; Mary Stevenson and Sandy; Jean Gasik and Maxine Morden; Helen Campbell and Flo Fisher; Helen Berardini and Elva Bonkoma; Robert Hall and Robert Watts; Dr. Harold Barron and Jim White; Kay and Ernest Cranton; Tom Bateman and G. L. Cooper; Ed Flitak and Dan Harrington; Dorothy Robertson and Dillie Olson; Harry Thelp and Jean Heugh.

JUST A REMINDER that if you are going to be home for the weekend of July 11 through 14, we will be having the annual Mt. Clemens Sectional Bridge Tournament at that time. Try to make plans now for partnerships. More details of this tournament later.

If you are a discriminating shopper, you'll find it pays to read the classified pages of *The Eccentric* today and every week. Read and advertise in the Classified pages. Call MI 4-1100.



you really can't save the money on Hot Water if you let Torrence install a new oil fired Hot Water Heater... and what's more... is the fact that you get ALL you need... and MORE... while you save money.

TORRENCE OIL CO.
MICHIGAN DIVISION
MICHIGAN 4-9200

It has been my pleasure to play with Dr. Herbert Bronson and Dr. Martin Schaeffer in the Birmingham tournaments, and due to their good play, we have done well. Dr. Bronson is from the Birmingham area.

These good doctors were partner in the men's pair at the Michigan Championships at the Detroit Lehigh Hotel and received most all the points in today's hand. It was one of those hands in which very few pairs arrived at the same contract.

North and south vulnerable. Deal 34 North.

NOITH (Dr. Schaeffer)
♠ K J 9 8
♥ A 9 6 4
♦ A 10 8 3
♣ 7

WEST
♠ Q 7 5 4 2
♥ Q 7 2
♦ 9 2
♣ Q 4

EAST
♠ 10 6 3
♥ J 8 5 3
♦ K Q J 5
♣ 10

SOUTH (Dr. Bronson)
♠ V 10 4
♥ K 10
♦ 7 6 4
♣ A K 10 9 8 6 3 2

The bidding:
NORTH EAST SOUTH WEST
1 ♠ pass 2 ♠ 2 ♠
3 ♠ pass 4 NT pass
4 ♠ pass 4 NT pass
5 ♠ pass 6 ♠ all pass.
Opening lead: 9 ♣
Had West opened with a spade or heart, Herb would have had no problem with this hand, but his opponents were no push-overs. Herb could see from a glance that he had 11 top tricks if the club suit broke even. To gain his twelfth trick he would require a squeeze, so he ducked the opening lead of a diamond, which was won by East.

After a study of the hand by East, he could see that his partner held the spade ace, but was in a position that he could not open it. However, East could not afford to return a spade and the doctor ruff this trick.

He now pulled trump and when they broke, he went to dummy with a diamond, won the trick, returned to his hand with a second spade ruff and then pulled out all the trump.

When he played his last trump, he still held both hearts and a low diamond. The dummy had been ruffed to the king of spades and the top three hearts; West held the ace of spades plus all three hearts and East held the high diamond.

Music Guild Slates Next Year's Concerts

The Cranbrook Music Guild had its final annual meeting at 8 p.m. on Monday. This was a two-fold meeting, for it concluded the 1962-1963 year and also opened the new membership drive for the 1963-1964 season.

Cranbrook House Terrace will be the locale for the summer series, which falls on Sunday afternoons at 4 p.m. on June 30 and July 14 and will feature The Detroit Chamber Orchestra under the direction of Albert Tipton.

THE REGULAR series opens in the fall in the intimate setting of Cranbrook House itself. At 8 p.m. on Oct. 29 the Guild is presenting Ronald Turini, pianist, the only recent pupil of Vladimir Horowitz. On Nov. 10 two young Grinnell scholarship award winners will perform for the membership. This evening has been an annual concert of the guild for ten years.

And for the Yuletide festivities, the Albion Chorus will sing a Christmas program on Dec. 10 at 8 p.m.

REGULAR memberships and patron memberships are available. If the memberships are immediately renewed, new members will be signed up before Saturday, the guild will include the two summer concerts in a packaged unit for the 1963-64 season.

Festival Plans Aired

Robert F. McLean, 1963 Birmingham Arts Festival chairman, was interviewed this week on radio shows of two of Detroit's top women commentators.

WJG's Lee Murray discussed the festival with McLean from 1:30 to 2 p.m. on Wednesday and Fran Harris of WWJ invited McLean as the guest for the "Fran Harris Show" Monday.

WXII-TV's audience saw Winnie Colby and Pam Guetz rehearse the Kingswood Auditorium for a concert by Laredo and Meckler, violinist and accompanist. This unique husband and wife team will perform on March 17.

For further information contact Mrs. Howard Liverance or Mrs. Floyd W. Bunt.

of the festival steering committee, and Margaret DeGrace. The show will be aired on Friday or Saturday at 9:50 p.m.

The Birmingham Eccentric's "Potpourri" columnist, Julie Candler, will wear the festival poster girl costume on Pat Morris' morning show on WXYZ-TV, at 10:45 a.m. Friday. Julie also gave a resume of festival events.

Michigan is one of the five states in the union which has an Educational Research Organization functioning at the state level.

Delta County farmers in Michigan's Upper Peninsula have set state and national yield records for the growth of nonirrigated potatoes, over 1,040 bushels an acre.

DEVELOPERS OF

Colonial Communities

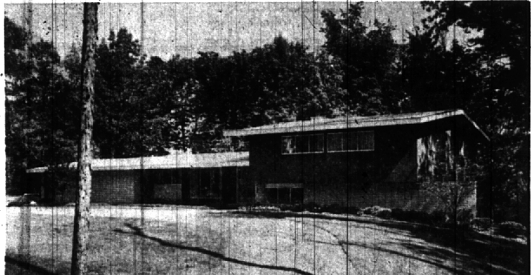
CONCORD GREEN
EAST GREENWICH GREEN
WEST GREENWICH GREEN
NOW—METAMORA GREEN—

Wm. J. PULTE, Inc.
MASTER BUILDERS
BIRMINGHAM
MI. 6-0105

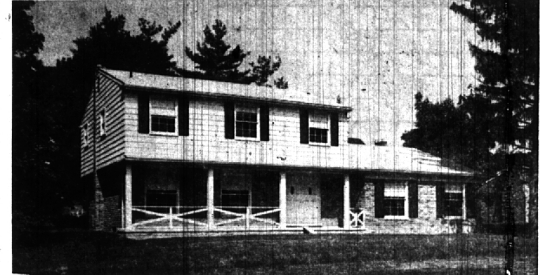
PULTE - BUILT - MEANS - BETTER - BUILT

OWNERS TRANSFERRED

making these houses available at far below duplication price!



Professionally landscaped setting gives this quad-level contemporary an unusually dramatic background. Every conceivable extra including 7 hi fi stereo speakers and recessed lighting over fireplace. 3 bedrooms, den, 2 full baths and 2 lavs. Extra large family room, 2 patios gives family privacy or excellent areas for entertaining. Kitchen has black walnut cabinets with white formica detail for stunning contrast. Ask for Alice Rutten.



Beautiful colonial on exclusive Birmingham Street. Large slate foyer divides huge beamed ceiling family room with parquet floor and raised hearth fireplace from spacious living room. Separate dining room, large efficient kitchen and breakfast area. Four twin size bedrooms, master bedroom exceptionally large with paneled wall and excellent closets.

CHARLES J. VAN HORN

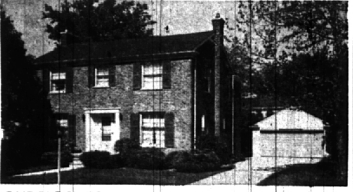
MI 6-2400 - JO 4-5644

576 N. Woodward Avenue

Birmingham, Michigan



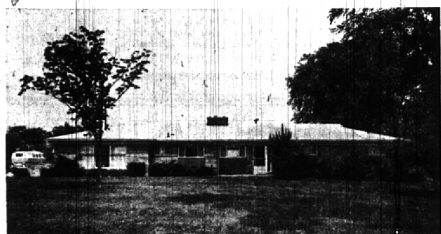
GILBERT LAKE PRIVILEGES and a 20 foot screened porch PLUS 4 bedrooms, 2 1/2 baths, dining room, paneled library and recreation room in basement. 11 Closets and extra storage in garage. Move in and ENJOY the LAKE THIS SUMMER. \$39,900.



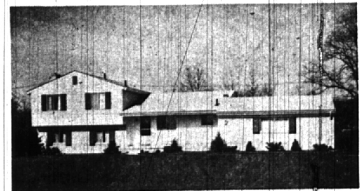
ONE BLOCK TO GRADE SCHOOL and close to stores. 4 bedrooms and 2 1/2 baths. Separate dining room, family room and recreation room. Two fireplaces. Excellent closet and storage space. **WONDERFUL NEIGHBORHOOD.**



AN OPPORTUNITY TO ACQUIRE—one of the loveliest homes in Bloomfield Village. Spacious rooms and 3 cheery fireplaces are an invitation to gracious living. Five bedrooms (master suite with dressing room), 4 1/2 baths, dining room, library, recreation room and porch. Beautiful NEW kitchen with built-in oven and range. NEW carpeting. Lawn sprinkling system. Many extras—better SEE IT! \$69,500.



A TERRIFIC BUY! Four bedrooms, 2 1/2 baths, 20 foot family room and only \$31,000. Large up-to-the-minute kitchen. Carpeting and intercom. system. Near Harlan School. **LOOK AT IT!**



COUNT THE ADVANTAGES: Walk to grade school; aluminum siding; spotless; quick possession; priced right! 3 bedrooms, 2 1/2 baths, den plus 21 foot family room with fireplace. Wonderful kitchen with built in oven and range. \$28,500.

Weir, Manuel & Snyder, Inc.

298 South Woodward
Birmingham, Michigan Realtors

Birmingham 644-6300
From Detroit 566-2323