



NATURE NOW

Sparrows Are Distinguished By Their Song—Not Looks

"Everyone knows a sparrow." Does he? Too many times he is seeing the so-called English or house sparrow which is not even a member of our native sparrows but belongs to an old world family of weaver finches which was introduced to New York in 1850. During the last century this untidy and gregarious species has spread from coast to coast. Our true sparrows are not distinguished by their looks although most of them are pretty enough in their neat browns and greys. But it is with their voices that they make a bid for our favor for the "vesper," "field," "song" and "white-throat" all have appealing songs.

AS WE HAVE our breakfast on these May mornings we often see

the white-throat scratching his feet in the shrub area. He can be recognized by the yellow spot in front of his eye, a narrow white stripe on his black crown, and by his pure white throat - patch sharply set off by grey.



Mrs. Frehse

Although a few remain with us throughout the season, most white-throats spend their winter in the Southern United States. In spring they migrate to their nesting grounds in our northern forests or among the mountains of New England.

Serves at Assembly

Jack W. Angerman, 678 Westwood Drive, Birmingham, served as a member of the standing committee on Christian Education for the 175th United Presbyterian General Assembly which concluded Wednesday in Des Moines, Iowa. Angerman is minister of education at First Presbyterian Church.

IT IS NOT SPRING in any year until we have heard the first call of the white-throat.

We listen for it on these early May mornings when the first lilacs are opening. It is a varied song. Its opening notes are so high that it is difficult to imitate either by a voice or a whistle but so unerring is its rhythm and quality that once learned it cannot be forgot-

THE WHITE-THROAT makes a stopover on his autumn migration flight while we are raking leaves in October. At this time we hear only the last lower notes but it speaks to us of season's end. We have heard the white-throat's song through many seasons and in many climes. He was our alarm during an unforgettable vacation in the White Mountains and on the day we climbed Mt. Monadnock his voice was the last bird music we heard after we passed the tree line on our way to the summit.

WE USUALLY SEE his kind in groups, especially during the migration periods when they make a great rustling as they scratch for food among the leaves. They prefer the friendly shelter of a

thicket or brush pile but are also at home in garden hedgerow or woodland border. The white-throat usually arrives at the nesting site in the north woods in late May or early June. The nest is built on the ground or in small trees or underbrush. The four or five pale greenish eggs spotted with brown are laid in a neat cup made of grass, moss and rootlets, lined with fine grass or hair.

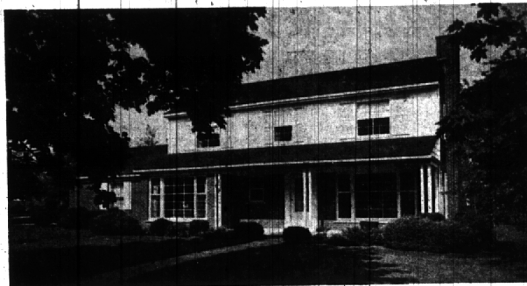
SEEDS, WILD FRUITS and a variety of insects make up the white-throat's bill-of-fare. He is especially fond of weed seeds and thus is decidedly beneficial to the farmer.

But it is his haunting and poignant song which for this scribble

sets this bird apart from all other songsters. And spring his notes reached its full crescendo until I hear the white-throat's notes gently borne on the vagrant winds of Maytime.

82 YEARS EXPERIENCE
RESIDENTIAL and COMMERCIAL ROOFERS
Gutters & Downspouts
J. J. Candler
ROOFING COMPANY
551 E. VERNOR HWY., DET.
WO 2-0512

PICTURE YOURSELF IN THIS HOME ... BLOOMFIELD VILLAGE



- 4 bedrooms
- 2 baths
- 2 powder rooms
- 2 fireplaces
- Oak panelled family room
- Enclosed porch
- Recreation Room with bar, small refrigerator, bar stools
- Carpeting
- Draperies



FRED PIERCE INC.
460 NORTH WOODWARD, BIRMINGHAM, MICH.
Midwest 7-1414

Setting the Stage

From the bow of the Cranbrook Greek Theatre, Mr. and Mrs. Carl Womberger make plans for this year's session of the Cranbrook Summer Theatre School, which they direct. The school will offer credit work in dramatic arts for students nine through 24 years old. Many members of this summer's staff are alumni of the theatre school, among them Mary Barton Geiger, Anne Walrad Kelly, Nancy Walker, Nancy Wolfe, Marcey Agree and Jo Anne Wheaton. Further information about the program may be obtained by contacting the Wombergers.

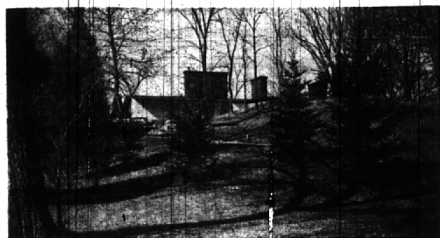
Sorority Sponsors Craft Workshop

Courses in weaving, enameling, jewelry, pottery, design appreciation and recreational crafts will be given at the 20th annual Craft Workshop, June 10 through 23, in Gallatinburg, Tenn., according to Mrs. C. Philip Bartlett, president of the Bloomfield Hills chapter of Pi Beta Phi. The workshop is jointly sponsored by Pi Beta Phi (a national collegiate sorority) and the University of Tennessee. Further information may be obtained through Mrs. Bartlett.

DEVELOPERS OF
Colonial Communities
CONCORD GREEN
EAST GREENWICH GREEN
WEST GREENWICH GREEN
NOW—METAMORA GREEN—
Wm. J. PULTE, Inc.
MASTER BUILDERS
BIRMINGHAM
MI. 6-0105
PULTE - BUILT - MEANS - BETTER - BUILT

LAKEFRONT, FOR FUN LIVING . . .

HIDEWAY HOUSE!

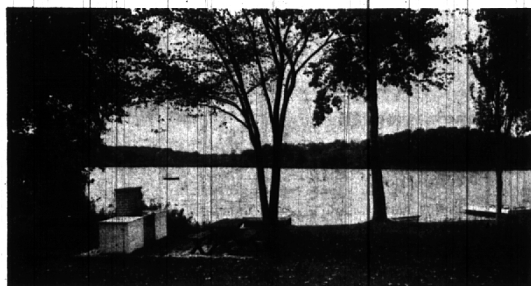


Nestled on a wooded hillside with sweeping lake views, is this stunning Wallace Frost Contemporary. The house is in excellent condition, the beach is magnificent. We recommend this strongly to bachelors, however, if you insist upon seeing this dramatic home we just might persuade our Mr. Douglas to show it to you. Priced at \$69,000 and worth it.

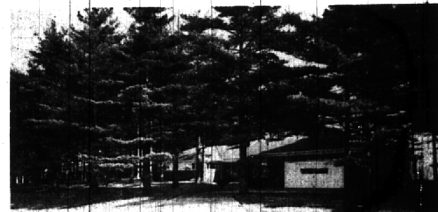
SIMPLY SUPERB!



One of our area's most beautiful private lakes is the setting for this deluxe home. Built for a most discriminating owner, it offers the utmost in luxury living. In addition to the home itself, there is a separate "in-law" or "college set" apartment with living room, bedroom and bath. The grounds are sizeable and wooded, the beach is lovely and there's a concrete boat house for your power boat. The owner has \$140,000 invested but will sell for a fraction of reproduction cost.



SWIM, FISH, GOLF!



Among the towering pines, the front of this deluxe Rambler has spectacular views of the lake. The rear overlooks broad vistas of Orchard Lake Country Club. Superbly built and in excellent condition, this home has three large bedrooms, an extra large living room with window-walls and large game room. Nearly new carpeting is of top quality and many other extras are included. The price has just been slashed to \$59,500.

TOP LOCATION!



Designed and built by one of our leading architect-builders, this home enjoys the year 'round fun of lake living yet is close to town. Near Kirk in the Hills and Forest Lake Golf Club, it has everything for comfortable living. Five bedrooms, three baths, gorgeous living room with sweeping lake views, family kitchen with barbecue are just a few of the outstanding features. If you could find a comparable site you couldn't duplicate this lovely residence at \$64,750.

MEMBER
REAL ESTATE RELOCATION
RELCOA
NATION WIDE
HOUSING SYSTEM
CORPORATION OF AMERICA

WHATEVER YOUR REAL ESTATE NEEDS SEE

MAX BROOCK INC.

300 S. Woodward

MI 4-6700