

Cultural Events

BIRMINGHAM THEATER—Double feature: "Critic's Choice," starring Bob Hope and Lucille Ball, and "The Hook," starring Kirk Douglas and Nick Adams.

BLOOMFIELD THEATER—Double feature: "Miracle of the White Stallions," starring Robert Taylor and Curt Jurgens, and "Legend of Lobo," a Walt Disney adventure.

CRANBROOK—Last four days of student and sale, Cranbrook Academy of Art, Crafts Court, 9 a.m. to dusk.

AAUW—The Oakland County Chapter of the American Association for the United Nations will present a panel discussion by foreign students in room 29, Oakland Center on the Oakland University campus, beginning at 8 p.m. Open to the public.

CONCERTS—Spring vocal and instrumental concerts at Greenfield, Barnum, Harlan and Groves schools, all beginning at 8 p.m.

BRIDGE—Birmingham Duplicate at the YMCA, 400 E. Lincoln, Birmingham, beginning at 7:45 p.m. Open to the public.

BIRMINGHAM ART CENTER—Annual show of work by BAA students at the Birmingham Art Center, 1513 S. Cranbrook Road, Birmingham. Hours are 2 to 5 p.m. daily except Mondays. The show will run through May 25.

JACOBSON'S—Exhibit of off-duty fine art work by area illustrators at Fine Arts in Jacobson's in the Home Decorative Shop. Gallery hours follow regular store hours.

May 21

FILM—The Southfield Film Society will present the film, "A Raisin in the Sun," as the final program of the year, at 8 p.m. at the Northwestern Unitarian-Universalist Church, 23925 Northwestern Highway. Admission by membership card; tickets also available at the door. A panel discussion will follow.

May 25

BALLET—Eighth and final seminar of season of the Children's Ballet Theatre in the activities room of the Village Nursery School, 31195 W. 13 Mile Road. Guest artist-instructor will be Miss Jenny Workman of the Ballet Theatre of New York City.

May 27

LECTURE—Dr. David DiChiera of Oakland University will talk about the art songs of Schubert, Schumann, Brahms and Hugo Wolf at the Village Woman's Club, 190 E. Long Lake Road, Bloomfield Hills. Open to non-members. Tickets available at the door.

BRIDGE—Birmingham Duplicate at the Birmingham Community House, beginning at 7:45 p.m. Open to the public.

CHORAL FESTIVAL—All-city elementary school choral festival at Seaholm High School, beginning at 8 p.m.

LECTURE—Dr. Maurice Brown of Oakland University will discuss the Shakespearean play, "Troilus and Cressida," at the Village Woman's Club, 190 E. Long Lake Road, Bloomfield Hills. Open to non-members. Tickets available at the door.

BRIDGE—Tuesday Birmingham Duplicate at the home of Hilda Murphy, 2424 Manchester, Birmingham, beginning at 1 p.m. Open to the public.

May 29

BRIDGE—The Birmingham-Bloomfield Area Bridge Club at the YMCA, 400 E. Lincoln, Birmingham, beginning at 7:45 p.m. Open to the public.

May 30

BRIDGE—Birmingham Duplicate at the YMCA, 400 E. Lincoln, Birmingham, beginning at 7:45 p.m. Open to the public.

June 1

CRANBROOK GALLERIES—Opening of the annual summer show of work by students of the Cranbrook Academy of Art; will run through mid-September. Also, in the Young People's Art Center Galleries, annual student summer shows will run through mid-September. Gallery hours are 2 to 5 p.m. daily except Mondays and major holidays. Admission charge.

June 2

TERRA COTTA SCULPTURE SHOW—Opening of annual show by Terra Cotta sculptors at the Birmingham Art Center, 1516 S. Cranbrook Road, Birmingham, with reception at the art center from 2 to 6 p.m. Exhibition will remain up through June 9. Gallery hours are 2 to 5 p.m. daily except Monday.

June 3

LECTURE—Dr. David DiChiera of Oakland University will lecture on the piano music of Berlioz, Liszt, Smetana and Richard Strauss at the Village Woman's Club, 190 E. Long Lake Road, Bloomfield Hills. Open to non-members. Tickets available at the door.

BRIDGE—Birmingham Duplicate at the Birmingham Community House, beginning at 7:45 p.m. Open to the public.

June 4

CONCERT—Spring vocal concert at Derby School, beginning at 8 p.m.

CONCERT—Spring instrumental concert at Pierce School beginning at 8 p.m.

LECTURE—Dr. Maurice Brown of Oakland University will lecture on the Shakespearean play, "Timon of Athens," at the Village Woman's Club, 190 E. Long Lake Road, Bloomfield Hills. Open to non-members. Tickets available at the door.

BRIDGE—Tuesday Birmingham Duplicate at the home of Hilda Murphy, 2424 Manchester, Birmingham, beginning at 1 p.m. Open to the public.

June 5

CONCERT—Spring vocal and instrumental concert at Westchester School, beginning at 8 p.m.

JAZZ—Brokensha Jazz Quartet, with vocalist, will perform in the Gold Room of Oakland Center on the Oakland University campus, beginning at 8:15 p.m.

BRIDGE—The Birmingham-Bloomfield Area Bridge Club at the YMCA, 400 E. Lincoln, Birmingham, beginning at 7:45 p.m. Open to the public.

June 6

BRIDGE—Birmingham Duplicate at the YMCA, 400 E. Lincoln, Birmingham, beginning at 7:45 p.m. Open to the public.

Local Potter's Work In Crafts Exhibition

William E. Pirley of 1020 Hazel, Birmingham, was represented in New York before being brought to Indianapolis. It was assembled by the regional exhibition, Craftsmen of the Central States, which opened May 12 at the Herron Museum of Art, Indianapolis. Pirley is head of the ceramics department at Wayne University. His exhibit is a stoneware fruit bowl and bookbinding.

• david k. falvey and
• hugh c. white
• life
• C. L. U.
• fire
• automobile
• casualty
• home owners
• package
• policies
• hospitalization



COMPLETE INSURANCE PROGRAMS ARRANGED

217 pierce st., birmingham
midwest 4-7803 and mi 4-3610

Choral Festival Stated at Seaholm

Some 1338 elementary students, representing all of the Birmingham schools, will participate in the bi-annual all-city choral music festival, to be held at 8 p.m. Tuesday in the gymnasium at Seaholm High School is open to the public.

The festival is under the direction of Arnold Berard, coordinator of music education for the Birmingham Public Schools. Eight members of the instrumental music staff have assisted in planning, arranging, and handling the program. They are Eleanor Ballum, Mary Partlow, Anita Stubbiehn, Edith Yoder, Carol Thome, JoAnne Borika, Ronald Sprunger, Phyllis Gardner.



Pure American Colonial

Pleasingly proportioned and of true Colonial styling. This dignified example of the best in American architecture is set pleasantly on a deep lot in the very heart of Birmingham. The living room is generous and pleasing and there is a separate Dining room. The three large family bedrooms on the Second floor are abetted by a dormitory like bedroom on the Third floor. A delightful glazed and screened porch off the living room overlooks the nicely planted garden. The Full basement is partially finished with tile and knotty Pine. And the price? Just reduced to \$36,000.

Walsh, James & Wasey Co.

Realtors Since 1918
431 S. Woodward Ave. Birmingham
Midwest 4-6500
Detroit, JO 4-6033

Two for the Panel

Participating on panels during Albion College's 12th annual Freedom Forum May 9 were two area students: William R. Gaudin of Lathrup, editor of the college's campus newspaper, and John F. Blamy of Birmingham, a speech student. Discussed was "Government Secrecy: Censorship and a Free Press."

Scholars' Treasurer

Newly appointed treasurer of the board of directors of the Oakland University scholarship com-

mittee is Mrs. Alfred C. Girard of Bloomfield Hills. The board has through such activities as the overall responsibility for all fund-raising activities for the scholar-

New Branch Office - Chamberlain Real Estate

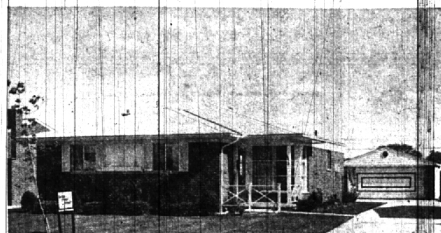


NAMED CHAMBERLAIN MANAGER



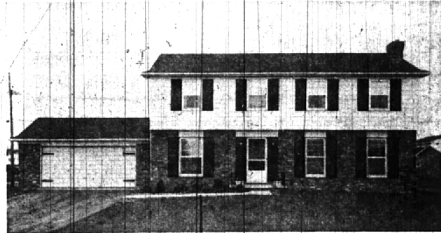
Robert E. Larsen has been appointed Branch Manager of the new Northwestern office of the Chamberlain Real Estate Co. The new offices are located at 31500 Northwestern Highway in the Strickfaden Professional Center. Mr. Larsen brings six years experience to the new office, and will continue to provide the same proven and efficient service for their Northwestern Purchasers and Sellers as established in the Company's home office at 975 S. Hunter Blvd. in Birmingham. Mr. Larsen, a senior associate of the Chamberlain Real Estate Co., resides with his family on Buckingham Rd. in Birmingham.

BEVERLY - R.O.



EXCELLENT LOCATION for both Public and Parochial Schools. Brick Ranch with FULL BASEMENT. And as you can see, a 2 1/2-car Garage and double paved drive. Lovely Patio in rear with umbrella and table included. 3 Bedrooms, 2 full Baths. Tiled Recreation room; Merion Blue lawn. Like-new Carpeting. WELL PRICED!! \$23,900.

BIRMINGHAM FARMS



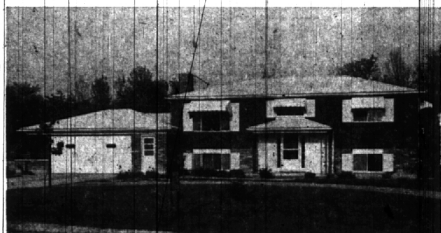
LESS THAN A YEAR OLD—Handsome Colonial on high site. 4 large Bedrooms, 2 1/2 Baths. Partial Basement. Living room. Dining room. Large Family room with fireplace. Kitchen with all built-ins and Breakfast area. Carpeting. Draperies. When built, fixtures and wallpapers were extra and especially selected. EXCELLENT FAMILY HOME both as to space and location. \$36,500.

SNYDER KINNEY & BENNETT INC.

Realtors

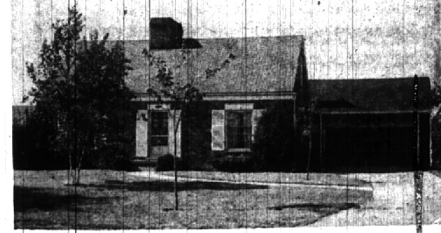
MI 4-7000 239 S. Woodward 32740 Franklin MA 6-9600

COUNTRY



1961-Built BI-LEVEL on 1/2 Acre site. 4 Bedrooms, 2 full Baths. Beautiful Family room with walnut paneling, acoustic ceiling, bookshelves and built-in storage cabinets and fireplace. Kitchen with all built-ins and additional cabinets. 2 1/2-car Garage plus large storage room. Circular drive. Vinyl floor on lower level. Fine carpeting. TREMENDOUS VALUE FOR \$27,900.

CITY



CHARMING CAPE COD—Excellent floor plan and traffic pattern. Center entry opens to 28-foot Living-Dining room and to Large Library or 4th Bedroom. Lovely Farm Kitchen with knotty pine cabinets and fireplace. Bookcases, desk and fireplace in Living room. 3 excellent Bedrooms on 2nd floor. Full Bath on each floor. Full Basement. Lovely park-like backyard. Large jalousied Porch. Most desirable City location. \$28,500.