



Freeze Frosting

So delicate in flavor, so creamy-soft in texture, is this chocolate frosting to freeze that you can use it as a filling as well as a topper for cakes.

It's delicious on cake layers whether they are made by your own recipe, from a cake mix, or bought from the store. Use this frosting at once, or freeze it for the future when you want a luscious cake topper in a hurry. It's the type of frosting that takes to debonair swirling for decorative effect, and it's easy to vary with nuts or coconut.

CREAMY SEMI-SWEET FROSTING

- 1 six-ounce package (one cup) semi-sweet chocolate morsels
- 1/2 cup butter or margarine
- 1/2 cup evaporated milk
- 1 jar (7 1/2 ounces) marshmallow cream

Melt semi-sweet chocolate morsels and butter over hot (not boiling) water; blend well. Remove from heat. Gradually add evaporated milk, stirring until smooth. Let cool to room temperature. Add marshmallow cream and beat until smooth. If desired, vary filling by adding nuts or coconut.

Yield: Filling and frosting for two eight or nine-inch cake layers or frosting for 24 medium cupcakes.

To Freeze: Turn into freezer container, seal. When ready to use, let frosting stand at room temperature until soft enough to spread, approximately one hour.

Emergency Radio Corps Schedules Show, Contest

The Oakland County Amateur Radio Emergency Corps will have its annual public judging contest on May 26. It will be held at 13 Mile Road and Coolidge Highway in Royal Oak between the hours of 10 a.m. and 5 p.m.

The mobiles to be judged are the

mobile radio transmitters that would be used in a disaster or other public necessities.

The event is open to the public.

You can make doughnuts using canned biscuits. Just punch a hole in each biscuit and fry in deep fat until golden brown. Drain, and then roll in sugar. Serve while hot.

If the lady of the house doesn't eradicate them with her vacuum cleaner, at least she will keep them on the run, says the National Pest Control Association.

WAR ON ONE or more of four species of carpet beetles has been unsuccessfully waged for over 150 years in this country, says Dr.

Outdoor Recreation Boom Has High Citizen Support

A father and his two sons watch a recreational area being cleared adjacent to the McGee Bend Dam project in Texas.

In New Jersey, youngsters listened avidly as their mother explained about exhibits that will go into a children's zoo, now under construction on South Mountain Reservation by the Essex County Park Commission; while a husband and wife, hiking through Antelope Valley in California, inspected at first hand some of the 4,087 acres of land recently purchased by the Los Angeles County Parks and Recreation Dept.

ALTHOUGH THESE are scenes in widely separated sections of the U. S., they all have the thing in common—they illustrate how families are taking an active interest in outdoor public recreation.

All across the country similar scenes are being enacted daily.

Outdoor recreation, which was once thought of as a vacation fare primarily, has grown in importance to where it occupies at least one-fifth of all the leisure time enjoyed by Americans and their families.

REGARDLESS OF what device is used to measure the growth of

recreation areas, the numbers of fishing license holders or outboard motors in use—it is clear that Americans are seeking the outdoors as never before.

The reasons for this have been developing over many years. They reflect the shorter work week, which provides a two-day weekend for a large majority of families; labor-saving equipment in the home; longer span of life, enabling older persons to live many years past retirement; and higher incomes, which permit many more families to afford the recreation they would like to have, both before and after retirement.

ACCORDING TO the National Recreation Association, in 1960 alone (latest year for which statistics are available), 40 per cent of all Americans participated in some form of outdoor recreation during the year—swimming, boating, fishing, skiing, golfing, picnicking, camping and so on.

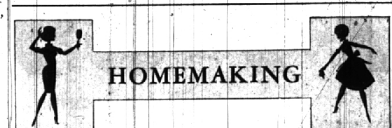
The Outdoor Recreation Resources Commission has even totaled up recreational activities and worked out a figure of 4.4 billion separate occasions when individuals participate in outdoor recreation during a year's time.

INDIVIDUALS HAVE made substantial gifts, both in funds and in property, toward recreation projects in their own communities. In many areas, clubs and civic associations have financed the acquisition or improvement of recreational lands or facilities. Also, it has become fairly common for business concerns, particularly utilities which have large acreage at their disposal, to donate or lease lands for recreational use.

ONE OF THE most impressive demonstrations of interest in recreation is coming from the American people themselves, who have indicated time and again their willingness to tax themselves for recreational facilities at a time of widespread concern over the extent of taxation.

Last year alone, bond issue referendums for recreational developments were held in 89 communities, and more than two out of three were passed by the voters. The same ratio held true for recreation tax levies that were submitted to voters.

May 16, 1963 THE BIRMINGHAM (MICH.) ECCENTRIC 5-D



Moving the Furniture Upsets Carpet Beetles

Housewives with a yen to rearrange the living room may be creating a population of distraught husbands, but these same ladies are probably the nation's front-line fighters of that highly destructive scavenger—the carpet beetle.

If the lady of the house doesn't eradicate them with her vacuum cleaner, at least she will keep them on the run, says the National Pest Control Association.

WAR ON ONE or more of four species of carpet beetles has been unsuccessfully waged for over 150 years in this country, says Dr.

Dial Shower Temp

You can avoid trial-and-error discomfort in the shower by having your plumber contractor install a single-handle mixing valve. A mere turn of the handle delivers water at the desired temperature immediately. Quick "turning in" assures economy in the use of water in addition to added comfort.

Non-leaded or white gas is best fuel for small air-cooled engines of most home power mowers. This gas reduces lead deposits in the engine and extends the lifetime of valves and spark plugs.



Plan a 3-Meal Ham

Ham is a year-round favorite in many homes, but it is especially popular during the spring and summer months. Its low cost per serving portion means good food value with budget savings.

Aside from its thrifty nature, ham is the featured star of an endless variety of tempting meals. With a little advance planning, you can have the ham cut in meal portions and serve each part in a different manner.

For example, a few top slices can be cut from a whole or half ham and reserved for broiling. The rest of the ham can be baked in the traditional manner. Since you are preparing and serving smaller quantities, the "pre-cut" plan is also a good way to eliminate left-overs.

THE DIAGRAM above shows one way of cutting a half ham for three separate meals. Simply wrap cuts of ham in transparent saran and store individual pieces in the refrigerator until time of use. This quality plastic food wrap chings snugly and molds itself to the meat contours, preventing loss of flavor and quality.

Start from the aitch bone piece can be used for hearty ham loaves, casseroles, omelets, or creamed dishes, such as Ham A La King Deluxe.

HAM A LA KING DELUXE

- 1 small green pepper, minced
- 1/2 lb. sliced fresh mushrooms or 2-4 oz. cans, drained
- 2 tablespoons butter
- 2 tablespoons flour
- 3 tablespoons butter
- 1 cup milk
- 1 cup thin cream
- 2 lightly beaten egg yolks
- 2 cups diced cooked ham
- 1/2 cup diced pimiento
- 1 teaspoon lemon juice
- 2 tablespoons sherry
- Salt and pepper to taste

Cook green pepper and mushrooms in butter until soft but not brown. Make cream sauce by blending flour and butter in top of double boiler; gradually add milk and cream. Cook over direct heat, stirring constantly until thickened.

Mix a little sauce with egg yolks, then combine with rest of sauce. Place top of double boiler over boiling water. Add rest of ingredients and stir until sauce reaches right consistency and is hot.

Serve on toast points or patty shells. Makes six servings.

Schools Plan Honor

Rt. Rev. Msgr. Peter P. Walkowiak, pastor of St. Florian's Parish, Hamtramck, will be the recipient of the "Fidelity Medal," awarded annually by SS. Cyril and Methodius Seminary, St. Mary's College

and St. Mary's Preparatory, Orchard Lake, to an outstanding Catholic of Polish descent.

The awarding will take place during the 7th commencement exercises of St. Mary's College and St. Mary's Preparatory at 2:30 p.m., May 30.

Class Ring Is Keener If Cleaner

Memo to the class of '63. Show off that new class ring to best advantage. Make sure the sparkling clean, worn on the correct finger, and that it adorns well-groomed hands.

Most girls prefer to wear school rings on the right hand, and they find that school crest rings look most feminine when worn on the little finger.

A RING deserves its own beauty routine. Dull tarnished rings are no beauty mark.

To keep rings sparkling, soak overnight in a mixture of one tablespoon of detergent to one cup of water.

The next morning, rinse the ring in warm running water and polish carefully with a tissue.

Remember that hand lotions, sun and dirt create dulling films. Rings should be given a frequent polish bath. In addition, a quick polish with a tissue several times during the day will keep your ring at its sparkling best.

YOUR NEW school ring deserves the setting of pretty hands, softened by faithful application of your favorite hand softener.

Nails should be carefully manicured. Longer nails will glare short, stubby fingers. If you are blessed with long, tapered fingers you can afford to file nails fairly short.

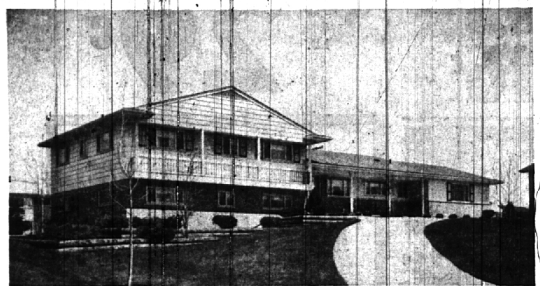
Remember that colorful nail polish disguises flaws in nails that are less than perfect. If you have perfect almond-shaped nails, you can afford to show them off with clear or translucent nail polish.

For Top Mileage

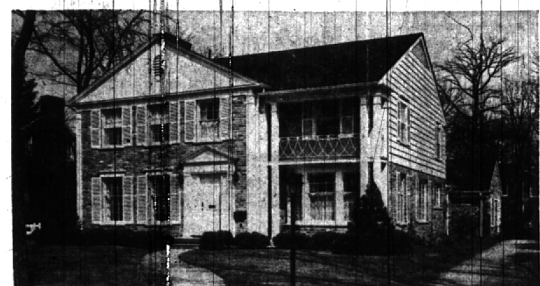
The average motorist cannot get the top mileage claimed by professional drivers. It helps, however, if the auto owner watches the pressure, gives a regular tune-up, sparks, plugs, carburetor, points, tension on belts; keeps wheels aligned and bearings lubricated; paces speed to traffic; forgets fast starts and keeps cool under the wheel.

Beef Is Good Buy

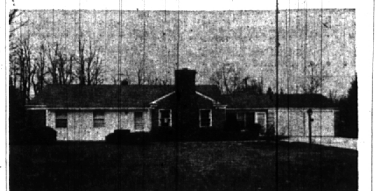
Most homemakers will find beef supplies more plentiful during the second quarter of 1963, as April, May and June of this year bring during the same period of 1962. This will mean good buys for the homemaker who likes to plan her shopping and buy when prices are best. Prices are always best when a particular food item is most plentiful on the market.



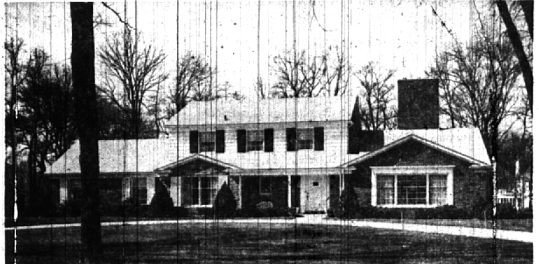
IT'S MUCH LESS THAN YOU'D GUESS! — AND HAS SO MUCH! Four twin-sized bedrooms and 3 1/2 baths. 32-foot family room with fireplace plus paneled recreation room with Bar-B-Q. Dream kitchen with built-in refrigerator, oven and range. Near (St. Hugo and Eastover) schools.



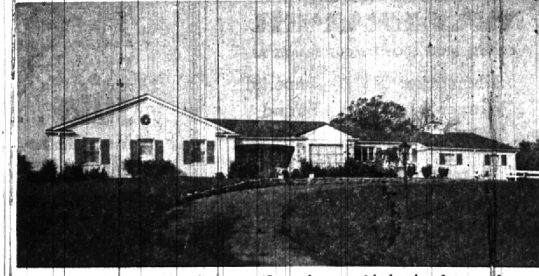
CHANCE OF A LIFETIME! Designed by BISSELL, built by BAIN, located in BLOOMFIELD VILLAGE and YOU can buy it! Four large bedrooms, two baths and two lavs. Both living room and family room have a fireplace. Separate dining room and "House and Garden" kitchen. Large recreation room. G. E. air-conditioner. Don't miss it!



\$25,900.00 and WING LAKE PRIVILEGE! Enjoy year round fun and Bloomfield schools. Two twin-sized bedrooms, two full baths. Separate dining room and family room. Carpeting, draperies, extra closet space and in excellent condition.



A PERFECT HOME—IN BLOOMFIELD VILLAGE. Four large bedrooms (extra large master suite on first floor), 3 1/2 baths, separate dining room and huge family room with fireplace. Recreation room and a great jalousied porch. Terrific kitchen with built-in oven and range, cedar closets, lawn sprinkling system; just a few of the many extra features. May we show you the others?



SEE FOR YOURSELF—This magnificent home with loads of room for family living and entertaining friends. 4 bedrooms, 2 baths, powder room and lav. Separate dining room, spacious cheery kitchen with built-in oven and range. 23-foot family room with fireplace and refreshment bar. 25-foot screened porch. Roomy basement is a plus benefit!

Weir, Manuel & Snyder, Inc.

298 South Woodward Birmingham, Michigan Realtors
 Phones: Birmingham 644-6300 From Detroit 566-2323