

- ACROSS**
- 1 Cattlefish
  - 4 A Georgian of the Caucasus
  - 10 Brewer's yeast
  - 14 Stroke of a bell
  - 15 Bird
  - 16 Tree
  - 17 Recess in a shore
  - 18 On the ocean surface of
  - 19 King's home
  - 20 Washes in glass water
  - 21 The diamond
  - 22 Over (post.)
  - 23 Anger
  - 24 River island
  - 25 Tangled
  - 26 To shahn continuously
  - 28 Antlered animal
  - 30 First woman
  - 31 Snake
  - 32 Chum
  - 33 City of Italy
  - 34 Pom of "No No"
  - 35 Story
  - 36 Slipper
  - 37 Wander aimlessly
  - 38 Fall
  - 39 Bring forth

Answers to Puzzle Will Be Found on Page 7-D

- DOWN**
- 1 Slides
  - 2 Boredom
  - 3 Volcano in Martinique
  - 4 Chemical suffix
  - 5 Singing voice
  - 6 Fish
  - 7 Front piece of a ballet
  - 8 Consumed
  - 9 Approaching
  - 10 Pennant
  - 11 God of war
  - 12 To stop upward
  - 13 Small race
  - 14 Word of negation
  - 15 Man's name
  - 16 Unusual
  - 17 Those in office
  - 18 Business transaction
  - 19 Pretend before
  - 20 Eastern
  - 21 Cry of bacchanals
  - 22 Daring horse
  - 23 Staff
  - 24 Labyrinth
  - 25 Posterior pigment
  - 26 Approaching the iris
  - 27 Box
  - 28 Hindu cymbals
  - 29 African antelope
  - 30 Irishman
  - 31 Capable of leision
  - 32 Requested
  - 33 Man's nickname
  - 34 To winnow
  - 35 Diabre
  - 36 Employa
  - 37 Best
  - 38 Dull finish
  - 39 Spirited
  - 40 Hazy
  - 41 Russian
  - 42 Granted (her.)
  - 43 Spinning top (pl.)
  - 44 Metal container
  - 45 Paucet

2	3	4	5	6	7	8	9	10	11	12	13
14				15				16			
17				18				19			
20			21	22			23	24			
25		26	27			28			29	30	31
32	33	34									
35	36	37	38	39		40		41	42	43	44
45				46				47			
48		49	50			51					
52				53	54			55	56	57	58
59	60	61			62		63	64	65	66	67
68			69								
70			71					72			
73			74					75			

PUZZLE NO. 756



**Which Witch Is Wishing?**

"Zelda, the Good Witch," a play for children, will be presented at the Birmingham Community House Saturday at 1:30 p.m. by the Newcomers Club drama group. "Zelda" is the story of a witch who wishes to become a fairy. The fairy Flora (Mrs. Lawrence J. Dupree) gives Zelda (Mrs. Earl Anderson) encouragement as Spider (Mrs. Kenneth Wisby) tries to dissuade her. Directing the show is Mrs. Ernest W. Jackson. Tickets can be obtained at the Community House.

**Canoeing Map Is Available**

A series of four Huron River canoeing guide maps, illustrating canoe camping permits—may be routes from Pontiac to Lake Erie, obtained by contacting the Huron-Clinton Metropolitan Authority, 1750 Guardian Building, Detroit. A five-county park 26. When making request, be sure and parkway agency serving Liv- to specify "Canoe Maps".

The colorful, detailed maps—and authority canoe camp sites available for overnight use with stoves, water and sanitary facilities at Labadie Island in Kensington Metropolitan Park near Milford; along the Huron River one-half mile south of Hudson Mills Metropolitan Park (two and one-half miles northwest of Ann Arbor); at Lower Huron Metropolitan Park southwest of Belleville along the Huron River, and near Hamburg, plus identifying canoe camp sites operated by the Michigan Department of Conservation.

The Birmingham Eclectic Classified pages offer you a fine opportunity to sell your unwanted household goods.

**Local Best Sellers**

- Fiction
- NO RED RIBBONS—John Quirk
- ELIZABETH APPLETON—John O'Hara
- THE TIN DRUM—Ganther Grass
- Nonfiction
- THE FEMININE MISTIQUE—Betty Friedan
- THE WHOLE TRUTH AND NOTHING BUT—Hedda Hopper
- I OWE RUSSIA \$1,200—Bob Hope

DEVELOPERS OF

**Colonial Communities**

CONCORD GREEN  
EAST GREENWICH GREEN  
WEST GREENWICH GREEN  
NOW—METAMORA GREEN—

Wm. J. PULTE, Inc.  
MASTER BUILDERS  
BIRMINGHAM  
MI. 6-0105  
PULTE - BUILT - MEANS - BETTER - BUILT

**Have Auditions For Poetic Play**

Detroit area audition dates for "Chiara," a poetic play-in-movement by Ruth Russell Davis of Bloomfield Hills will be presented Nov. 20, to 24 by the Performing Arts Workshop, Inc., have been announced by director-choreographer Sara Lee Stadelman. Adult and teen-age actors, dancers and singers may apply 12 to 5 p.m. Saturday, 8 to 10 p.m. Monday, and 8 to 10 p.m. Thursday, at the workshop, 4402 W. McNichols, across from Marygrove College. "Chiara" is a stage adaptation by Mrs. Stadelman of the poem "Chiara" and "A Saint in Bingham" by Mrs. Davis. Rehearsals for the play will begin in September.

FORMERLY AN actress in the New York theater and a student with Martha Graham, Mrs. Stadelman has been apart-in-residence at Marygrove for the past two years. She will direct a four-week summer course in acting choreography (synchronization of stylized movement and the spoken word) to

**Cranbrook Student Wins Certificate From Designers**

In special ceremonies last Saturday in Cincinnati, O., David Ghesquier, son of Mr. and Mrs. Frank J. Ghesquier, of 6161 Franklin Road, Birmingham, was awarded a certificate of merit by the American Society of Industrial Designers.

Ghesquier, who will receive his Bachelor of Fine Arts degree in industrial design from Cranbrook Academy of Art on May 31, received the certificate for "highest standards of character, achievement and professional promise."

Saturday's ceremonies were the climax of ASID's newly instituted honors program in which 24 schools throughout the country took part.

acquaint "Chiara" cast members with her acting-dancing-singing approach to dramatic theater.

The Performing Arts Workshop, Inc., is associated with the Detroit Adventure Series.



**THE ROSE MAN BRINGS YOU ...**

**YEAR 'ROUND FREEDOM**  
from bothersome ants—and other pests

**ROSE HOME SERVICE OFFERS YOU** Guaranteed, professional protection against moths, ants, carpet beetles, spiders and other insect pests... 365 days a year!

Now! Enjoy freedom from costly, harmful home insect pests. Rose Home Service brings researched, scientific protection into your home... and keeps it there all year for only pennies a day!

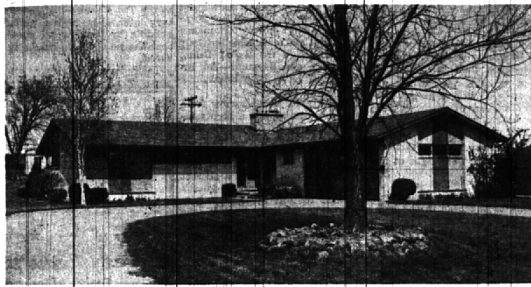
- FREEDOM FROM:** Moths • Ants • Spiders • Carpet Beetles • Mice • Crickets • Roaches • and other pests
- CHECK THESE FEATURES:** Scheduled scientific applications • Modern equipment and materials • Convenient-Safe-Economical • Prompt, courteous service

ROSE—Since 1860  
8401 W. Chicago  
Detroit 4, Mich.



Call the Rose Man—**L15-2222**

**REDISCOVER THE REWARDS**  
of one floor living



- L shaped Ranch
- Newly decorated
- 4 bedrooms, 2½ baths
- plus bedroom on LL
- Large living room with fireplace
- Family Room
- Plus paneled recreation room
- Farm Kitchen with BBQ
- All the built-ins
- Carpeting and Draperies



**FRED PIERCE INC.**

460 NORTH WOODWARD, BIRMINGHAM, MICH.  
Midwest 7-1414

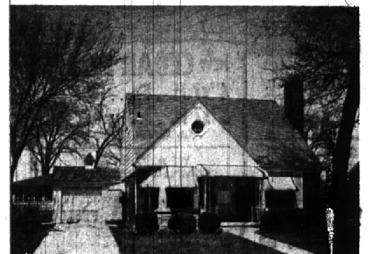
**YOU'LL FIND BETTER BUYS AT BROOCK!**



Here's a most attractive home in Beverly Hills. It features extra large bedrooms, good sized living room, Family room, full basement. The wooded site is 120x130. It is in the Birmingham school district. New carpeting included at \$29,900.



You will be able to swim, fish or water ski from this Bloomfield Rambler, 3 Bedrms, full basement, large living-dining areas, carpeting, draperies, gas heat. An exceptional buy at \$23,400.



Attractive isn't it? And what's more it's a quality home in a top location. Two bedrooms and bath down, room for two large bedrooms and bath up. The wooded lot is a good size and there's a finished "Rec" room. Birmingham schools. Full price \$21,500.

BIRMINGHAM'S NATIONALLY KNOWN REALTORS

**MAX BROOCK INC.**

300 S. Woodward

MI 4-6700