

Entryway Should Have Simplicity

Folks who have an eye for beauty are thinking hard about updating their entrance hall. They've come to realize that the entrance area is the portal to their home, a mark of their hospitality which greets the guests with built-in cordiality.

IN CONTRAST to the entrances designed some years ago in which the object was to impress guests with the owner's opulence, today's

entrance hall is a marvel of tasteful simplicity. Clean lines embellished with rich materials and space expanding design is the formula. Because square footage is apt to be on the snug side, cluttered furniture and bric-a-brac are banished from the entrance. Instead, the walls are called upon to do the job of decorating the entryway.

THE SUREST success comes

from using a warm, textured material like natural wood paneling for walls, and, especially for the small area, a pale but mellow wood-like, vertical grain is ideal.

Fine woods should, of course, be finished with only clear lacquer or wax. SPACE CAN be visually expanded in the small entrance simply by including glass around the front door, and if the glass is opaque, it will insure privacy while still opening up the walls.

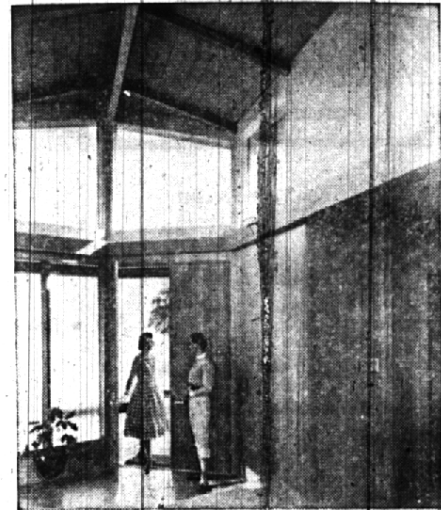
Special beauty can be brought into the "window wall" if the panels of glass are set in clean-lined mullions of natural wood to match wall paneling.

ANOTHER space-expanding idea is to raise the room over this area a half-story and include windows over the door.

Again for decorative effect, structural elements of the roof—glue laminated beams and ceiling decking—should be left exposed.

Flooring in the entryway should be as indestructible and easy to clean as possible.

Slate is one handsome material which is widely used, but there are also a number of good looking, inexpensive cork and vinyl tiles on the market which can be used to introduce a spot of accent color.



HOMES OF TODAY are being constructed with built-in hospitality. Cordiality depends much on tasteful simplicity of design relieved by rich materials like the mellow hemlock paneling in this entry. The small area of this entrance is expanded with an exterior wall of translucent glass and high beamed ceiling which was raised a half-story over the area for dramatic effect.

ELLIS INC. SINCE 1945 MODERNIZATION

PORCH ENCLOSURES



FREE ESTIMATES

Family—Activity—Recreation
Rooms & Porches a Specialty.

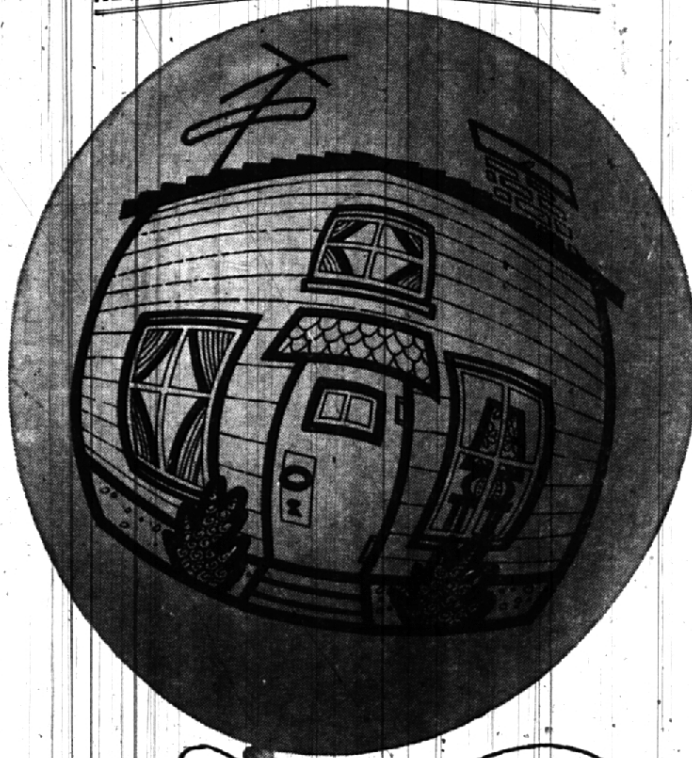
MI 6-4188

KITCHENS—BATHROOMS
ROOFING—SIDING

Most any alteration
and repairs

TERMS

NEED MONEY TO MAKE YOUR HOUSE BIGGER?



COME TO THE BANK WHERE YOU GET ACTION

Not enough house? No room to roam? Expand it. Add a room. Add a bath. Add a porch. Put your attic to use. Need money? Want low bank rates? See us. Good things begin to happen. You get fast, helpful, personal attention with a loan matched to your needs. No red tape. No down payment. Your contractor can handle everything for you, or you can come in and see us. Like it? Try it.

the Most Experienced Bank in town

DETROIT BANK & TRUST

Copyright 1963 The Detroit Bank & Trust Co. Member FDIC
WOODWARD-HAMILTON • WOODWARD-14 MILE • WABEEK BLDG.
WOODWARD-OAKLAND DRIVE-IN OFFICE

Garden Tips

One vegetable that should be grown in shade is garden asparagus. Delicious as a green vegetable, the foundation for gourmet soup, the acidity of the leaves increases when the plants are grown in hot sun. This is the reason for giving it a shaded location.

Food for birds is particularly necessary in late winter when natural supplies are at a low point. Remember that the birds that come to your feeders are apt to spend the summer ridding your garden of insects.

MAKE UP your mind that crabgrass will not be a pest in your garden this year. Investigate NOW the various pre-emergence controls, decide which kind best suits your lawn and conditions, and apply it as early as manufacturer's directions permit.

Looking for a green edging for a bed or border? Grow perennial candytuft from seeds, and you've found your edging. Leaves are green all year long. Flowers may be pure white or pinkish-white depending on the species you buy.

The homemaker who longs for a new vegetable should try growing okra in the garden. Small, tender pods may be used in soups, dipped in batter and fried, or combined with tomatoes for a vegetable stew.

FLOWERING tobacco (nicotiana) isn't always night-flowering. While the older varieties with white flowers bloom at night, the strain called Daylight has the same color blooms but they stay open all day.

If you prefer colored to white flowers, Daylight Sensation Mixed will produce blue, coral, violet, yellow, rose, crimson, scarlet and mahogany flowers as well as white. They'll stay open all day, but they lack fragrance.

Onion sets, which are really tiny onions, may be planted just as soon as the ground dries a little. There's no need to prepare the soil, just poke the sets into the ground with your finger. Before you know it, the sets will have grown into green onions for table use.