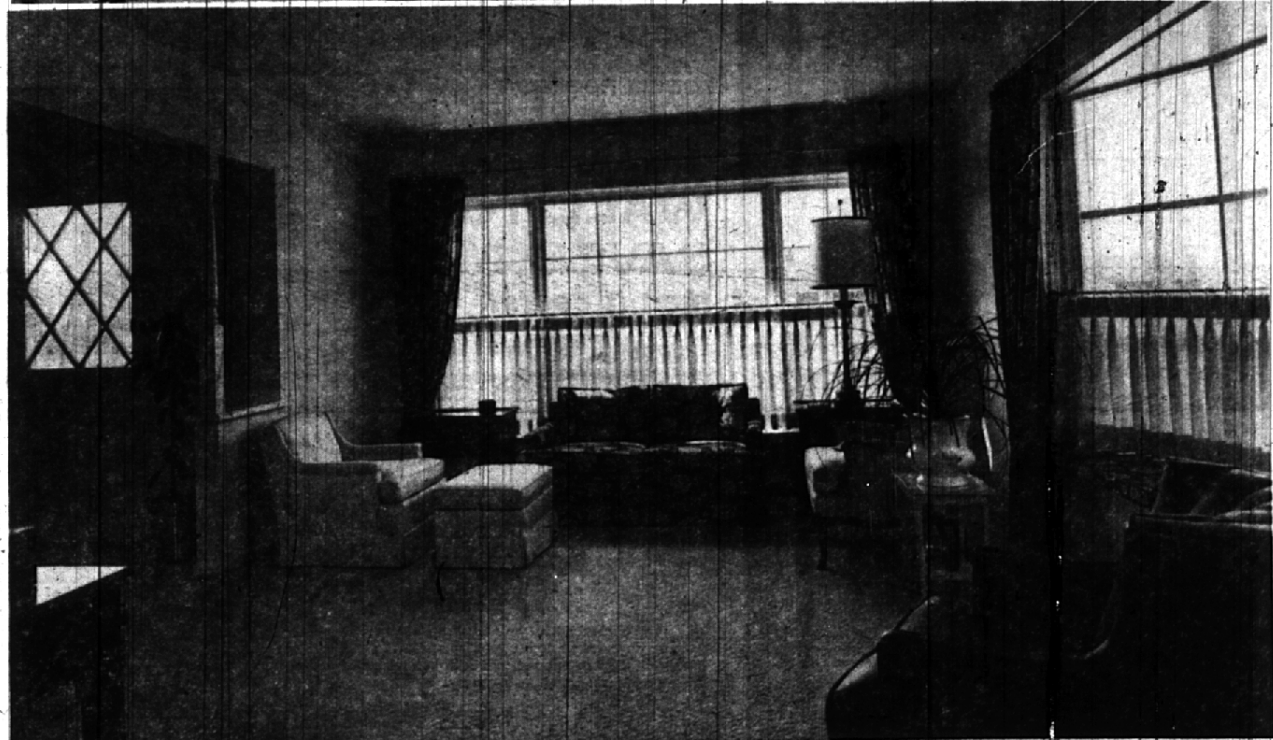
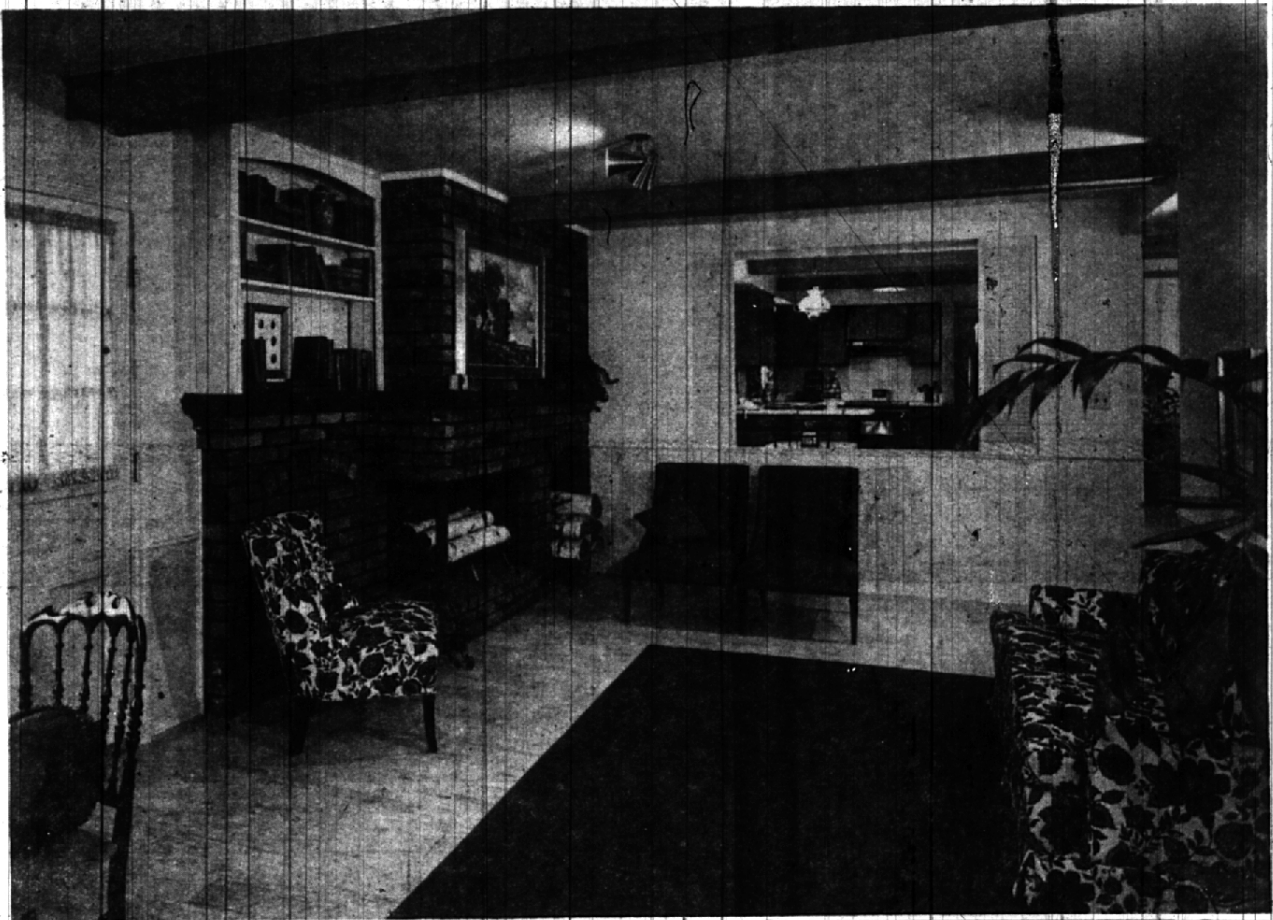


# Ideas for the Taking Close to Home



A joint workshop-research program between a major appliance corporation and a Detroit and suburban home builder, has provided Birmingham-Bloomfield "home bodies" with a series of models in which to search out details for their own new homes. Prices range from \$25,000 to \$30,000, plus lot. The houses are built in "Fairways", south of Maple Road between Inkster and Middlebelt Roads, in W. Bloomfield Township. Robinson Decorating Galleries did the interior decorating and all homes are completely equipped with the newest electric appliances, including refrigerator-freezers,

built-in ovens and surface units or the new slide-in units, built in dishwashers, disposals and automatic washers with clothes dryers. Models vary according to the design of the house and kitchen plan. The first home to be completed was "Craft Home", a traditional colonial. It is a three or four bedroom family home that moves away from excessive togetherness. The spaciousness of the family room (top) and formal living room are proof of the padding.