

Thanks to the vigor and ever-blooming qualities of today's modern roses it's never too late to plant them during the growing season.

Right now is the time for setting-out potted roses. Container-grown plants as they are some times called, will take root quickly in your garden to lend dazzling beauty, bloom and color to the landscape this very season.

Potted rose plants provide an extra planting period for gardeners and a wonderful opportunity for everyone to pick out some of those special new varieties that may have been overlooked in earlier plantings this season.

POTTED ROSE BUSHES appear in paper plastic or metal containers at local nurseries or garden centers. The bushes have been pre-planted and are already growing. Usually you will find these plants with leaves and often with actual buds and blooms as well. Many rose lovers prefer to plant roses in this way because it gives them a chance to make their choices from plants in magnificent bloom.

There is every class and color to choose from in potted roses. The prize plants for this year are the two, 1963 All-America Roses, "Tropicana" and "Royal Highness." They shouldn't be overlooked, though it would be difficult for the eye to miss either of these varieties. They are the winners of this country's only major national rose competition.

IF A BRILLIANT, orange-red bud or flower catches your eye it will most probably be the unique "Tropicana" rose, a champion of 13 major international awards in addition to its 1963 AARS honor. It is one of the top choices for this year, as it will be for years to come. This hybrid tea produces large blooms abundantly for beginner and veteran alike.

"Royal Highness," co-holder of the 1963 AARS award, dresses its plant continuously with large, hybrid tea blooms that have a frost-like coating on their shell-pink petals. It will be one of the eye-catchers in the garden and a blue-ribbon winner if you are an exhibitor.

Transferring a container rose to your garden is quite easy. Just give special attention to the earthen ball which should remain intact so that roots are not disturbed. Here's all there is to planting:

KEEP THE SOIL in the container moist until ready to plant. Prepare hole so that the bud union (the "knuckle" where stems begin) will be at ground level or check with the nurseryman for proper depth. Allow for at least six inches of space all around the earthen ball.

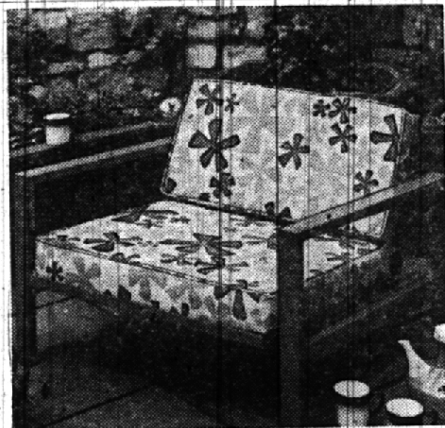
Open a paper pot by cutting down each side with a knife. If

in a metal can, have it cut at the nursery but leave the plant in the container. Remove plant by holding earthen ball gently so that no soil is loosened or broken from roots. Do not lift from the top of the plant.

Place in hole and fill-in soil to about the top of the earthen ball

and tamp the soil firm. Water well to settle soil.

Once set-out, potted roses ask only the same routine maintenance and watering as your other plants. They will provide many exquisite blooms for the garden as well as home arrangements all through summer and into fall.



Patio Perfect

This chair has big, bold florals in colors to rival nature's own. In textured vinyl upholstery the chair was conceived for use indoors or out—in any informal setting.

Moore's Exterior Paints

Give your home Moore protection!

A Little Benjamin Moore Paint Makes A Big Difference



- A special paint for every exterior surface
- Outstanding weather resistance
- World's finest selection of colors
- Easy to apply
- Economical to use

Benjamin Moore paints

Birmingham Paint, Glass & Wallpaper

"Everything For The Beautification & Preservation Of The Home"

335 EAST MAPLE, Between Woodward & Hunter MI 4-3737

There's more to choose from in Early American at Wiggs . . . for every room in your house . . . and it's all open stock!

Ethan Allen

CLASSIC EARLY AMERICAN FURNITURE IN MAPLE, PINE, & CHERRY

We've carried Ethan Allen in stock since 1951, and you can buy a piece today that will perfectly match in style and finish the pieces you bought back then!

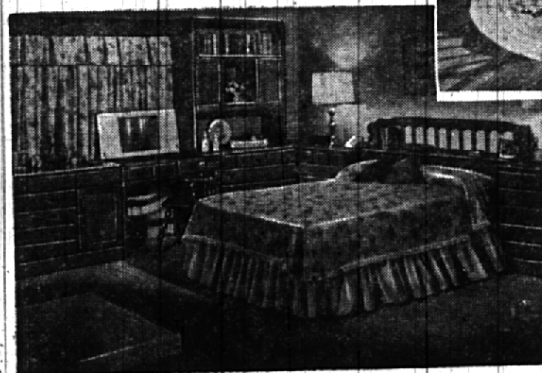


FOR YOUR DINING ROOM . . .

Choose from 40 tables, 35 hutches, and 25 chairs—You'll find just exactly the right size table, hutch, and chair style to suit your decor and floor plan! Immediate delivery on almost every piece.

FOR YOUR BEDROOM . . .

Choose from scores of sizes in dressers, chests, and night tables . . . choose from dozens of beds—in double, twin, queen, or king sizes! Immediate delivery on almost every piece.



FOR YOUR LIVING AND FAMILY ROOM . . .

You'll find more tables, sofas, chairs, and love seats at Wiggs . . . in the sizes, shapes, and colors of your choice! Immediate delivery on almost every piece.



THEY'RE new

Deltax VINYL COATED RUGS

Edw. Jones Floorcovering

283 Hamilton Row (Behind Demery's) MI 4-4483



WIGGS

4080 TELEGRAPH At Long Lake Road BLOOMFIELD HILLS

24 W. HURON ST. In downtown PONTIAC

Open Mon., Thurs. & Fri. 'til 9 Open Monday & Friday 'til 9