

# Handcraft Center Opens Doors

Reviewed by  
**ROBERT BRONER**

A small spot in Birmingham is now in revolt against the machine. Here you are surrounded by the personal, by utensils made by hand to fit your hand, by ceramics that remind you of the earth from which they are shaped. America House-Michigan is being opened today, by Englander's under a unique franchise from the famous handcraft center in New York, America House.

William Morris, the 19th century rebel against the industrial revolution, would be reassured to see that a completely industrialized society such as ours still retains a keen desire for useful and decorative objects that come from the hands of an artist-craftsman.

**MOST OF THE** work in the new shop on East Maple near Hunter was selected by America House in New York. Even the exterior and the interior display cabinets were designed by the late David Campbell, former president of the American Craftsmen's Council, to resemble, as nearly as possible, the original shop in New York.

In addition to the selections made in New York, America House-Michigan also has a jury of local craftsmen to select work from the Midwest for sale. This gives us the opportunity to see our best craft work next to a selection of national scope.

It is a pleasure to find that the quality of Michigan crafts can match the competition, although we seem more modest in scale.

**AMONG THE WORKS** from the East are some unusual enamel pieces. A large abstract mural in cream colored enamel on metal by Kaye Denning has the freedom of an action painting. The smooth, marked surfaces are interrupted by rough bits of copper.

Karl Drerup, in a traditional but very sensitive use of enamel on copper, shows two decorated bowls and two small framed pieces. In a shallow bowl, where blues dominate the scene, an outwined figure of a man is set among small trees, shrubs and background house. The

gradations of tone lend a somber, atmospheric effect unusual in the medium. "Musicians" by Prerup is brighter in color, but the modeling and drawing is still subtle.

**EBONY, COCACOLA** and rosewood are carved by Walter Doring into candy bowls and servers, a whimsical and even a stirring. House-Michigan is being opened today, by Englander's under a unique franchise from the famous handcraft center in New York, America House.

**AMONG THE MIDWEST** craftsmen the most unusual ceramics in this playful kind of way are the "Needle People" and "Sexual Figures" by Clayton Bailey of St. Louis. The small ceramic, "Sexual Figures" is somewhat diaphanous in proportion. It is a kind of rough parody of the "Venus of Willendorf."

Honorio Oba shows several elegant white vases with green-brown designs freely brushed across the surface.

Roughly shaped glasses by Jan Jones emphasize the earthiness of the material. Yellow and grey colored enamels on metal by Kaye Denning has the freedom of an action painting. The smooth, marked surfaces are interrupted by rough bits of copper.

Robert Dibbel has thrown some fairly large pieces. His slud bowl set retains a ribbed surface which is softened with a grey-green glaze. The shape of the bowls is unusual in the narrow base and flaring top.

There is a fine speckled tea set and John Glick and more coarsely beaded vases by C. G. Strawn, white. Gordon Orcaer's planters and cylindrical vases are characteristic



**ADMIRING** A sculpture sent from the New York American House for the opening of the new America House-Michigan crafts gallery are two members of the local stores jury or board of selection. They are (from left) Marshall Fredericks and John A. Foster. Fredericks, a sculptor, lives at 440 Lake Park, Birmingham, and Foster, a potter and head of the ceramics department at the Society of Arts and Crafts, lives at 1166 N. Woodward, Birmingham. The new gallery at 555 East Maple was opened with a gala champagne and buffet preview Tuesday night and with a party for area members of the American Craftsmen's Council on Wednesday night. Manager of the America House-Michigan will be Mrs. Louis Holland.

**TWO MICHIGAN WEAVERS** are represented. Glenn Kaufman shows a small wool and linen flax rug with a strong orange design on the soft surface. Several metalisms show an extensive selection of rings, pins and pendants. Stanley Leebitz shows two

of sizes and shapes of pillows can be used on the floor or as bolsters. A small wall hanging by Auld shows off her hand spun and dyed wools in a strongly textured surface.

# Gravity

(Continued from 1-D)

withstand much higher accelerative loads without damage than was heretofore believed possible," said Ross.

"We have in mind long range investigations, conducting research in such fields as pharmacology and mechanical supports—ultimately covering the whole area of the response of organisms to the experience of high acceleration. Although our work at this time is with animals, the research is, of course, aimed eventually toward man," said Ross.

**IN MOST EXPERIMENTS** a monkey is placed in a "monkey couch" which, in turn, is placed in a capsule that is "at rest" in the center of the SPAPS centrifuge. The centrifuge is then "accelerated" to the desired speed, at which point the capsule is raised and swings out to a peripheral orbit.

Another phase of research by the Space/Defense Corp. will be under way in about two months with the completion of an environmental test sphere. The unit will be able to hold two men and to simulate atmospheric conditions ranging from 30,000 feet altitude to about 100 feet below sea level. It is expected to be especially useful in the field of oceanography.

"I THINK THE ocean and ocean exploration are an important part

of kinds of work, his extremely precise gold shapes often combined with niel—and a free form shape looks like a frozen golden cloth. Bruce Blyth has done several white gold rings combined with black pearls. A fine combination of wedding and engagement rings by Blyth overemphasizes the stone making the wedding band perhaps too minor an adjunct to the engagement.

A whole series of inexpensive silver and pearl pendants by Audrey and Robert Engstrom use simple curved shapes. Some of their pieces use large precious gems such as a faceted emerald set off to one side of a swirl of gold.

of our defense and our economic future," said Ross.

"For the military, if we can learn how to permit people to operate at greater depths than presently skin divers, this will help show the Navy new opportunities for utilizing the ocean to improve its future defense capabilities.

"From the economic point of view, although the oceans represent the largest percentage of our total earth area, they are still relatively unexploited. Much as in our investigation of space, there seems to be great economic possibilities in a thorough and systematic investigation of the physical and biological properties of the oceans," said Ross.

**RIGHT NOW,** the Space/Defense scientists are playing Mother Hen, waiting for 38 eggs to hatch. Eight of the eggs are whirling around in a centrifuge under a constant two "G" environment.

Another 11 were subjected to a 450 "G" environment for 20 seconds. They are now with matching "control" eggs for both groups including under normal conditions. (Normal incubation period is 21 days.)

Whether or not—or when—the eggs will hatch, nobody knows.

**ASKED ABOUT** the possibility of experimentation on other planets or celestial bodies, Ross replied: "First, we don't know if other environments can support life. We worry about a reduced 'G' environment—such as a man in orbit experiences. Man has and can survive it—as he can an increased 'G' environment—but whether or not he can for a long period of time no one knows."

**ROSS WAS FORMERLY** in charge of the balloon research program for the Navy for about 10 years and then with the Defense Research Laboratories at General Motors—as were most of the Space/Defense scientists prior to the organization of the new corporation.

Other owner-organizers of the group, which opened its doors last November, include Dr. Norman Lee Barr of Oak Orchard Ridge, Bloomfield Hills; Donald L. Foster, 1099 Wakefield, Birmingham; Bruce W. Fine, 219 N. Glenhurst, Birmingham; and Lester Williams, 715 Chain, Birmingham.

**THOSE NOT** from the Birmingham area include Michael Brian of Utica, Robert Hunter of Royal Oak



By **BUD MAYHAUM**  
Southern Michigan  
Bridge Association

In the recent sectional bridge tournament held in Ypsilanti, I found Mr. and Mrs. Weadley as from the king-jack of clubs or into first over-all in the mixed pairs. They are from the Birmingham area and can be found in most Birmingham tournaments.

Southern Michigan Bridge Association's national representative, Fred Enninger, playing with the old fox, Van Brooks, won the two-session open pair championship at this tournament.

Today's interesting hand was played at this Ypsilanti Tournament in the mixed pair and was one of the hands that the Weadleys handled in a masterful fashion. Both sides vulnerable. South is dealer.

<b>NORTH</b>		<b>SOUTH</b>	
♠ K 10 7 3	♥ A K J 10 8	♠ A Q 9 2	♥ 7 3
♦ 7 4	♣ Q 10	♦ 8 5 3 2	♥ 9 4 3
♠ 8 5 4	♥ J 6	♠ A Q 9 2	♥ 7 3
♦ 9 6 4 2	♣ K J 10 6	♦ 8 5 3 2	♥ 9 4 3
♠ A 7 6 5	♥ K J 8 2	♠ 3	♥ 4

The bidding: South West North East  
pass pass 1 ♣ 2 ♣  
2 ♣ pass 3 ♣ pass  
3 ♣ pass 4 ♣ all pass  
Opening lead: K ♣

William P. Orrick, Jr. of Whitmore Lake, and Alonzo D. Tuttle of Pontiac.

They expect to be supported primarily through grants, contracts and subcontracts coming from the National Aeronautics and Space Administration and similar agencies.

East's opening lead of the diamond king was followed by the lead of the ace of diamonds. When his partner dropped the queen, East (not wishing to lead away from the king-jack of clubs or into first over-all in the mixed pairs. They are from the Birmingham area and can be found in most Birmingham tournaments.

Today's interesting hand was played at this Ypsilanti Tournament in the mixed pair and was one of the hands that the Weadleys handled in a masterful fashion. Both sides vulnerable. South is dealer.

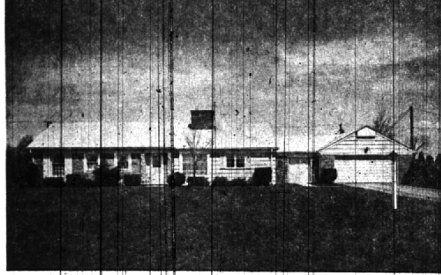
**I WANT TO** remind you again that we will hold the women's game at the Birmingham YMCA on Sunday at 6:30 p.m. The fine affords you an early arrival home and the game affords the winners two master-points.

Recent winners in Birmingham tournaments include: Hilda Murphy and Esther Clarke; Grace Conlan and Bill Axler; Grace Stone and Greta Howard; Helen Boothman and Stewart Murphy; Burt Mann and Frank Allen; Lois Mann and Ira Benjamin; Helen Campbell and Ollie Swartzwalder; Louise Benjamin and Greta Shepherd; Lullie Brunk and Edwin V. Clarke; John Noren and Henry Georgia; G. Kond and D. Kelly; Dorothy Robinson and Lois Walsh.

During the coming weekend there will be a sectional tournament at Sarnia, Ont., Canada. For those that are interested, I will gladly furnish a schedule of this tournament and will report winners.

# DESIGNED FOR HAPPINESS!

## SNOWSHOE CIRCLE



Close by Oakland Hills Country Club, here's a luxury Rambler waiting for your family. It has three bedrooms, two baths, farm kitchen, large glassed porch, all in excellent condition. In the Bloomfield Hills school district. Large landscaped site with plenty of play area. \$39,500.

## CLASSIC CONTEMPORARY



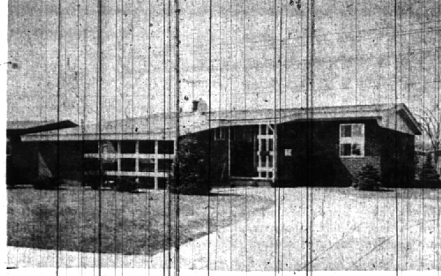
Built by a leading designer-builder for himself, this classic modern home has everything! Five bedrooms, three baths, and powder room, maid's suite, family room with bar, etc. The construction, too, is superb; Marble chip roof, steel floor framing, are just two examples. The wooded site is landscaped and has underground sprinklers. Truly exceptional. \$120,000.

## RIGHT IN TOWN



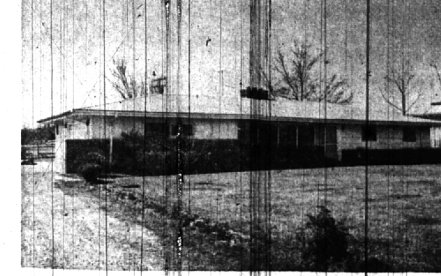
Walking distance to Birmingham High and Midvale schools, here's a real wife-saver home. Three bedrooms, family room, comfortable living room, all on a beautifully landscaped site in a fine neighborhood. You'll love the decor. \$25,500.

## SHARPLY MODERN



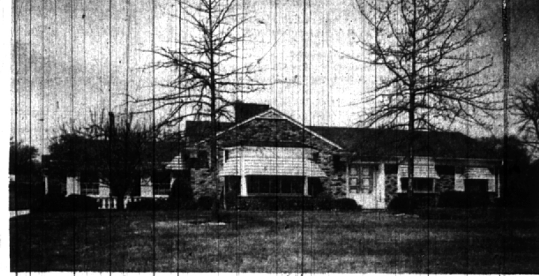
Hard to believe that this compact Contemporary has four bedrooms, but it has also full basement, large screened porch gas heat. Near Derby Junior High school and Pembroke elementary, in a most congenial neighborhood. \$20,500.

## AT THE LAKE



Close by a beautiful lagoon where you can anchor your boat for waterskiing, swimming or fishing, this comfortable home has 3 bedrooms, 2 baths, and a large family room. There are loads of closets. Walking distance to public and parochial schools. Open to offers—\$28,900.

## BLOOMFIELD VILLAGE



You can step from your magnificent bedroom suite into the lovely swimming pool at this Bloomfield Village home. Exceptionally well designed inside and out, it has all the amenities for luxury living, including a super kitchen, family room, that's cozy as can be. Birmingham schools. \$42,900.

BIRMINGHAM'S SENIOR REALTORS

MAX BROOCK INC.

300 S. Woodward

MI 4-6700