

Cultural Events

BIRMINGHAM THEATRE—"Son of Flubber," starring Fred MacMurray and Nancy Olson.

BLOOMFIELD THEATRE—Double feature: "Days of Wine and Roses," starring Jack Lemmon and Lee Remick, and "Term of Trial," starring Lawrence Olivier and Simone Signoret.

BRIDGE—Birmingham Duplicate at the YMCA, 400 E. Lincoln, Birmingham, at 7:45 p.m. Open to the public.

BIRMINGHAM ART CENTER—Exhibition of Michigan artist-craftsmen, with a special exhibit honoring Mrs. Elii Saarinen, at the Bloomfield Art Association galleries, 1516 S. Cranbrook Road, Birmingham. Will run through April 28. Hours are 2 to 5 p.m. daily except Mondays.

BALOGH GALLERY—Group exhibition, which features the work of French traditional painter Milo, and work by local artists at the Balogh Gallery, 138 Brownell, Birmingham. Hours are 10 a.m. to 6 p.m. Monday through Saturday and 2 to 5 p.m. Sundays.

LITTLE GALLERY—Group show of gallery regulars: assemblages by Glen Michaels, oils by Clifton McChesney and Jean Lamouroux, lacquer paintings by Ken Wynsma, sculpture by Morris Brose and ceramics by Otto and Gertrud Natzler, at the Little Gallery, 915 E. Maple, Birmingham. Hours are 9 a.m. to 6 p.m. Tuesday through Saturday.

FILM—The Southfield Film Society presents "The Sheep Has Five Legs," a French comedy, at 8 p.m. in the Northwestern Unitarian-Universalist Church, 23025 Northwestern Highway. Admission by membership card. A panel discussion will follow.

KINGSWOOD SCHOOL GALLERY—One-man show of paintings and drawings in the school's art gallery by Stephen Beck, Kingswood art instructor, through May 5. Hours are 3 to 5 p.m. on April 28 and May 4 and 5; 4:15 to 5:30 p.m. on April 29 and May 1, 2 and 3.

SECOND ANNUAL WORLD REPORT—Lecture by William T. Gossett in the Oakland Center on the Oakland University campus at 10 a.m. Open to the public.

OPERA WORKSHOP—Mrs. Robert Leggett of Royal Oak will lead discussion of "Tosca" at 9:30 a.m. at Baldwin Public Library, Birmingham.

CONCERT—A Seasholm Madrigal concert in the Little Theater of Seasholm High School at 8 p.m.

BRIDGE—Tuesday Birmingham Duplicate at the home of Hilda Murphy, 2424 Manchester, Birmingham, beginning at 1 p.m. Open to the public.

OPERA WORKSHOP—Lloyd Murphy of Marygrove College will lead discussion of "La Traviata" at 9:30 a.m. at Baldwin Public Library.

OPERA WORKSHOP—Marius Fossenkemper of the Detroit Conservatory of Music will lead discussion on "Otello" at 8:15 p.m. at the Baldwin Library.

BRIDGE—The Birmingham-Bloomfield Area Bridge Club at the YMCA, 400 E. Lincoln, Birmingham, beginning at 7:45 p.m. Open to the public.

OPERA WORKSHOP—Miss Bertha Seifert of Kingswood School will lead discussion on "Die Meistersinger von Nuernberg" at 9:30 a.m. at the Baldwin Public Library.

CONCERT—Vocal concert at Barnum School, beginning at 8 p.m.

BRIDGE—Birmingham Duplicate at the YMCA, 400 E. Lincoln, Birmingham, beginning at 7:45 p.m. Open to the public.

OPERA WORKSHOP—Mrs. James Rosenthal of Pontiac will lead discussion on "Cavalleria Rusticana" and "Pagliacci" at 9:30 a.m. at the Baldwin Public Library.

BIRMINGHAM VILLAGE PLAYERS—Opening night of "Thunder Carnival" at the Chestnut Street playhouse. Curtain time is 9 p.m.

OPERA WORKSHOP—Walter Schrott of the Birmingham Conservatory of Music will lead discussion on "Boris Godunov" at 9:30 a.m. at the Baldwin Public Library.

BIRMINGHAM VILLAGE PLAYERS—The Birmingham Village Players will present "Thunder Carnival" at the Chestnut Street playhouse. Curtain time is 9 p.m.

CRANBROOK GROUNDS—Official opening for the season of the gardens surrounding Cranbrook House (home of the founders of the Cranbrook institutions). Hours are 2 to 5 p.m. daily; there is an admission charge. The gardens will be open through October.

BAA—Opening of annual student exhibition. Will run through May 25. Reception at the Birmingham Art Center, 1516 S. Cranbrook Road, from 2 to 6 p.m. Hours are 2 to 5 p.m. except Mondays. No admission charge.

ANTIQUES—Seventh lecture in a series on early American antiques at the Village Woman's Club at 1:30 p.m. Speaker will be Jesse Pavey.

BRIDGE—Birmingham Duplicate at the Birmingham Community House, beginning at 7:45 p.m. Open to the public.

CONCERT—Groves Junior High School vocal concert at Groves High School, beginning at 8 p.m.

FRANKLIN FORUM—Final program of series. Rev. Malcolm Boyd—novelist, playwright and chaplain at Wayne State University—will speak on "The Journey Within Ourselves" at Franklin Community Church at 1:30 p.m. Open to the public. Tickets available at the door.

BRIDGE—Tuesday Birmingham Duplicate at the home of Hilda Murphy, 2424 Manchester, beginning at 1 p.m. Open to the public.

CONCERT—Vocal concert at Pierce School, beginning at 8 p.m.

BRIDGE—The Birmingham-Bloomfield Area Bridge Club at the YMCA, 400 E. Lincoln, Birmingham, beginning at 7:45 p.m. Open to the public.

CONCERT—Groves High School band and orchestra concert at Groves High School, beginning at 8 p.m.

CONCERT—Derby Junior High School band and orchestra concert at Derby Junior High School, beginning at 8 p.m.

PLAY—Students at Birney Junior High School, Southfield, will present their spring play, "Cheaper by the Dozen," at the school. Curtain time is 8 p.m.

BRIDGE—Birmingham Duplicate at the YMCA, 400 E. Lincoln, Birmingham, beginning at 7:45 p.m. Open to the public.

Gossett Returns For Oakland Talk On World Trade

William T. Gossett returns to this area to give the final lecture in the 1963 World Report lecture series Monday at 8 p.m. in the Gold Room of Oakland Center at Oakland University.

Gossett, who was appointed last December by President Kennedy to be deputy special representative for trade negotiations, will discuss the trade expansion act.

A former vice-president and general counsel of the Ford Motor Company, he has resided in Cranbrook Hills for many years. He has been a trustee of Cranbrook Foundation, Bloomfield Hills and chairman of the board of the United Negro College Fund. He is a life trustee of Columbia University, New York.

A limited number of lecture tickets are available through Mrs. June Matthews, Oakland University.

Opening Scheduled For Gardens at Cranbrook House

The gardens and park of Cranbrook House, which attract thousands of visitors each year, will open officially on May 4.

Occupying 40 acres, the gardens feature formal and casual plantings, pine walks, cascades, fountains and statuary surrounding the home of Cranbrook's founders, Mr. and Mrs. George G. Booth. Cranbrook's Greek Theater is also located in the gardens.

Open through October from 2 to 5 p.m. daily except Mondays and major holidays, garden tickets may be purchased at the Academy of Art Galleries and on Sundays at the main gate on Lone Pine Road. Proceeds benefit the scholarship funds of the Cranbrook schools.

Local Best Sellers

Fiction
SAND PEBBLES — Richard McKenna

THE CENTAUR—John Updike
GRANDMOTHER AND THE PRIESTS — Taylor Caldwell

Nonfiction
HAPPINESS IS A WARM PUPPY—Charles Schulz

THE WHOLE TRUTH AND NOTHING BUT—Hedda Hopper
THE GREAT HUNGER — Cecil Woodham-Smith

FALL OF THE DYNASTIES — Edmund Taylor

Opera

(Continued from 1-D)

Rusticana" and "Pagliacci" with Mrs. James Rosenthal, Pontiac Schools, will be introduced by Mrs. R. Jamison Williams of Bloomfield Hills.

And on May 3, "Boris Godunov," with Professor Walter Schrott, director of the Birmingham Conservatory of Music, will be introduced by Mrs. Kenneth Manuel, of Bloomfield Hills.

HOSSESSSES who will assist Mrs. Paul J. Shine, chairman of the series, are Mrs. L. T. Dickson, Mrs. Charles Noonan, Mrs. Richard Muerer, Mrs. Harry Hoyt, Mrs. Richard O'Reilly, Mrs. George McClellan, Mrs. Darrell Roberts.

One antique too many is a real problem. The solution: sell it thru a low cost Eccentric Want Ad. Convert your "don't needs" to spendable cash. Call MI 4-1100.

Pupils Win Honors In Poetry Contest

Susan Marsh, 9, daughter of Mr. and Mrs. Wu-Wai Chao, Susan, who won first place in the third grade and Matthew, third in the second grade, place winner in the Michigan special service? See the Want Ads.

School for the Blind, Lansing. Both The contest was held for students in the first through third grades.

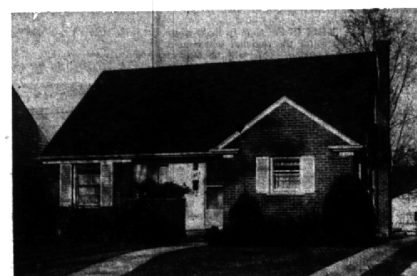
Looking for a job... a home... a special service? See the Want Ads.

CITY or COUNTRY



EXCELLENT VALUE

Heart of the City and walking distance to Shopping, Schools, Churches, Transportation—a Charming older home with good-sized rooms perfect for a family—Living room with fireplace, Separate Dining room, REMODELED KITCHEN with Breakfast space, 3 Bedrooms and finished 3rd floor with possibilities; very nice cedar paneled Recreation room in full basement. IMMACULATE and beautifully maintained. ONLY \$20,900.



YOUNG FAMILY

Neighborhood of friendly young people —OR perfect for a retired couple who want convenience and easy maintenance. 20-foot Living-Dining room. Kitchen with eating space. Full Basement. Unfinished 2nd floor could be converted to two Bedrooms. Some carpeting and curtains included. Mature shrubs and trees and well kept lawn. FHA commitment at hand. Priced at \$16,900.



GORGEOUS SITE

1/4 Acre in idyllic Woodcreek Farms—some 80 mature trees. Huge Living room with fireplace. Equally large delightful Farm Kitchen. Family room too. 2 1/2-car Plastered Garage. Furnace reconditioned with new boiler. New well pump. Flagstone Terrace at the rear. Carpeting included.

A truly picturebook spot. See and make an offer. Priced at \$29,500.



BEST OF SUBURBIA

Tri-Level on 1/2 Acre wooded lot. Bloomfield Schools. Very large Living room with fireplace. Separate Dining room. Paneled Family room. 3 Bedrooms, 2 1/2 Baths. Kitchen with GE built-ins. Marble sills. Peterson double-glazed windows. 2-zone heat. Slate Terrace. Tastefully decorated with many quality custom details. Well priced at \$27,900.



SNYDER KINNEY & BENNETT
INC.
Realtors

239 S. Woodward, Birmingham MI 4-7000
32740 Franklin, Franklin MA 6-9600



OR
Wherever you want to live—
SEE US—We are now affiliated with the largest inter-continental referral system in the entire United States.
American Institute of Marketing
Reputable—Reliable—Resourceful
Systems, Inc.



INVISIBLE from the front, but there nevertheless, is a fully exposed lower level with a breathtaking valley view. There are 4 convenient bedrooms, 3 full baths, 30 foot recreation room with second fireplace, large utility-hobby room, and 2 car attached garage. **SPRING FEVER! \$35,900.**



SPIC 'N' SPAN—Loving care and meticulous maintenance are evident throughout this appealing and well-located brick ranch. Near schools and shopping, it has 3 nice bedrooms, sparkling tile bath plus extra lav. off the master bedroom, screened porch, and full basement with tiled recreation area. **NICE CARPETS AND DRAPES! \$24,500.**



FRANKLIN VILLAGE—Truly unusual in both appeal and floor plan, you'll enjoy living to the fullest in this tree-surrounded Tri-level. Four excellent bedrooms, separate dining room, and 2 1/2 baths. TWO informal family areas—one on the main level and a children's playroom on the lower level—and attached 2 car garage. A DREAM COME TRUE! \$40,500.



FOUR BEDROOMS AT A BUDGET PRICE and located right in town near the commuter station and stores. For leisure fun there's a paneled family room on the first floor plus a basement recreation space. Cheery and convenient kitchen, fenced yard, attached garage, and including carpeting, drapes and curtains. **FHA TERMS: \$1,250 DOWN! \$20,850.**

DEVELOPERS OF Colonial Communities

CONCORD GREEN
EAST GREENWICH GREEN
WEST GREENWICH GREEN
NOW—METAMORA GREEN—

Wm. J. PULTE, Inc.

MASTER BUILDERS
BIRMINGHAM
ML 6-0105

PULTE - BUILT - MEANS - BETTER - BUILT

HALL & YOUNG

INC.

Showcase of homes

"Showcase" features each home listed with Hall & Young in lighted photos and color slides. RESULT—more effective sales exposure for sellers and easier selection for buyers.

"Twin offices"

BIRMINGHAM
345 S. Woodward
MI 6-7900

BLOOMFIELD
4114 W. Maple
MA 6-5900

OPEN TILL 9 P. M.