

Aboard the Forrestal

William H. McGaughey, 131 Guilford Road, Bloomfield Hills, president of Oakland Citizens League, (center) was one of 14 national guests recently invited by Secretary of the Navy Fred Korth to spend a week on the U.S.S. Forrestal to observe jet aircraft landings and steam-catalyst take-offs on the giant aircraft carrier. The Forrestal cruised 125 miles off the Virginia Cape and was scheduled to return to Norfolk by Easter. McGaughey and others were returned to shore after being airlifted from the deck of the 1,039 foot long carrier.

Community Leaders To Attend Conference

In the years to come, how can the city of Detroit best serve its adjoining suburban neighbors and how can these suburban municipalities serve the central city? As the "core" city of a six-county metropolitan area, which is rapidly increasing in population, what facilities and services should Detroit provide? What additional facilities are desirable and necessary in order to make this area one to be reckoned with on a national basis? How can neighboring cities—or even counties—co-operate to the best economic advantage?

THESE ARE some of the questions which community leaders, including Oakland County officials, hope will be answered at a one-day conference in Detroit's Cobo Hall at 8:45 a.m. May 6. The conference is open to the public.

Designated as a conference on "Our Metropolitan Community: What Goals and Guidelines?" the program has been organized to present in depth four specific categories with a recognized expert to discuss each category.

The categories into which the conference meetings will be divided include four separate facets of metropolitan growth.

Beverly Council Sends Two Plats To Planning Board

BEVERLY HILLS — Two plats were submitted to the council at Monday's council meeting and sent by them to the planning board for study and recommendation. The plat for Lincolnshire Forest was presented by William J. Pulte. It is located south of 13 Mile Road from Detroit Country Day School to the western village limits. It will have 108 lots. Plats four and five of Nottingham Forest were submitted by Andrews and Briggs, Inc. The area to be platted with 40 lots is west of Lahser and south of 14 Mile Road. The council requested that the planning board give its opinion as to the adequacy of recreational facilities in the plats.

A new type of steel guard rail designed to prevent "center mall" crashes has been developed in New York. It consists of parallel rails of impact-resistant steel, braced by slender posts, strong enough to prevent an auto from crashing through it but not so strong as to cause a dead stop or toss the vehicle back into oncoming traffic.

A mesh of woven, galvanized steel wire is now being tested as backing for carpets subjected to heavy wear. The mesh is affixed to the carpet in layers of liquid latex, to control distortion.

Detroit Country Day School

48 years of preparing boys for college
announces
ENTRANCE EXAMINATIONS
for school year 1963-64
at the school
22305 W. 13 Mile Rd. (corner Lahser)
Saturday, April 20th
For registration and further information
call MI 6-7717
Dr. W. Rudman Sterling, Headmaster

North Area Volunteers Sought to Assist Blind

Volunteers are being sought John's Evangelist Church, 2322 E. Grand Blvd., Detroit, where the group meets for indoor handicraft or goes on to outdoor activities and tours. At present, Mrs. Marcella Bergstrom, 2705 Lamplighter Lane, Bloomfield Hills, is the only volunteer participating from this area. She chauffeurs blind people from Pontiac every third Saturday to St. The OUTINGS for the blind are held every third Saturday afternoon. Next gathering, April 27, will take the group on a tour of Greenfield Village in Dearborn. At their last meeting, the blind

visited the museum in Detroit. Upcoming activities are to include summer picnics in parks. More blind people would like to join in the program when volunteers are available to transport them. Sign language is used by the blind who attend the meetings. Persons interested in serving as volunteers can obtain additional information by contacting Raymond J. Wuenschel, executive director, The Blind Service Center, 7338 Woodward Ave., Detroit. **Seek New District** The Senate Congressional Reapportionment Bill on 18th and 19th districts got through the House Apportionment Committee last week just before the deadline. A new 19th district is to be made from northern and western Oakland, as well as Lapeer and St. Clair Counties. **Finishes Training** Albert R. Kray, Jr., 18, son of Mr. and Mrs. Albert R. Kray, Sr. of 18168 Dunblaine, Birmingham, has completed recruit training at the Naval Training Center, Great Lakes, Ill.

Eaton's ENGRAVED STATIONERY

HOLIDAY CARD SHOP

150 W. Maple Birmingham PH. 646-9328

USE ECCENTRIC CLASSIFIED ADS FOR BEST RESULTS

KING OF ROASTS!

"SUPER-RIGHT" FULLY MATURED BEEF

Standing RIB ROAST

4th and 5th Ribs **65¢** LB.

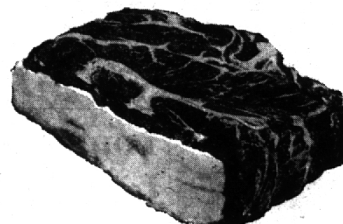
First 5 Ribs **69¢** LB. First 3 Ribs **75¢** LB.

"SUPER-RIGHT" QUALITY, MATURE BEEF

CHUCK ROAST

ONE HIGH QUALITY—NO CONFUSION—ONE PRICE AS ADVERTISED

CENTER BLADE CUTS



39¢ LB.

"SUPER-RIGHT" Ground Beef **43¢** LB.

Arm Cut **49¢** English Cut **55¢** Boneless Chuck Roast . . . **69¢**



U. S. No. 1 ALL PURPOSE

MAINE POTATOES

IDAHO POTATOES **25** LB. BAG **79¢**

SAVE 7c ON 2 LOAVES—JANE PARKER

Potato Bread

2 1-POUND LOAVES **39¢**

Cinnamon Rolls JANE PARKER SAVE 16c PKG. OF 5 **29¢**

CHEERIO CHOCOLATE COVERED

Ice Cream Bars

OR Fudgsicles **12** FOR **49¢** 2 PKGS. OF 6 NO COUPON NEEDED

Apple-Grape Drink

WELCH'S **4** QT. CANS **99¢**

Snider's Catsup . . 4 14-OZ. BTLS. **49¢**

A&P's EVERYDAY LOW PRICE

Miracle Whip

NO COUPON NEEDED . . . **49¢** QT. JAR

GREEN GIANT VEGETABLE SALE

Niblets Corn

Tender Sweet Peas 15-OZ. CAN Kitchen Sliced Green Beans 16-OZ. CAN Cream Style Corn 16-OZ. CAN • Mexicorn 12-OZ. CAN **6** FOR \$1

Lesser Quantities Sold at Regular Retail

CHEDDAR CHEESE New York Sharp - **69¢**

WHITE, YELLOW, CHOCOLATE-FUDGE OR DOUBLE DUTCH REG. 29c
Coke Mixes PILLSBURY LAYER . . . PKG. 29c
Beef Stew LIBBY'S . . . 8-OZ. CAN 39c
A&P Cherries RED, SOUR, PITTED . . . 2 1-LB. CANS 29c
Sta-Flo Starch 6c OFF LABEL . . . 1/2-GAL. BTL 39c



ALL prices in this ad effective thru Saturday, April 20th in all Eastern Michigan A&P Super Markets

WITH THIS A&P COUPON

93 SCORE, GRADE AA, SWEET CREAM **Sunnyfield Butter** NONE FINER **59¢** 1-LB. QTR'S

Good through Saturday, April 20th in all Eastern Michigan A&P Super Markets ONE PER FAMILY—ADULTS ONLY

WITH THIS A&P COUPON

83c Family Size **CREST TOOTH PASTE** **59¢** ONLY

Good through Saturday, April 20th in all Eastern Michigan A&P Super Markets ONE PER FAMILY—ADULTS ONLY

WITH THIS A&P COUPON

SAVE 50¢ WITH THIS COUPON GOOD TOWARDS THE PURCHASE OF ONE 3-PC. PLACE SETTING OR 3-PC. COMPLETE SET **Golden Dawn Melmac Dinnerware**

Good through Saturday, April 20th in all Eastern Michigan A&P Super Markets ONE PER FAMILY—ADULTS ONLY