

Former President Subject of Speech By Local Resident

Draper Allen, 2348 Northlawn, Birmingham, will speak on "Woodrow Wilson 50 Years Ago" at an all-school convocation at 10:30 a.m. today, at Bethany College, Bethany, W. Va. This year marks the 50th anniversary of the assumption of the presidency by Woodrow Wilson.

Allen is the owner of a large collection of biographies on President Wilson in addition to an extensive

library of Americana. During his business career, the avocational interest of Allen have been in the area of public affairs, public affairs participants and American political history.

He has held appointive office in both state and national government and now is a court commissioner of Michigan. He has had political experience embracing a congressional candidacy and delegations to national conventions.

Make a list of those "don't needs" today, Dial MI 4-1100 and Chas Lassi will help you.



a WORD TO THE WISE

1. WATER is everywhere EXCEPT where it should be. PUT PLENTY on tulip and perennial beds, evergreens and shrubs.
2. CULTIVATING BULB BEDS—Don't forget there are some "peeping Toms" JUST UNDER THE SURFACE.
3. MOUSE & RABBIT INJURY to shrubs and young fruit trees. If girdled the part above will die. If chewed half way around that stem will never be healthy. New shoots will come up from below injury.
4. PEACH TREES: Don't PRUNE until after the trees blossom—then you can tell whether you have too few or too many and whether to prune or not.
5. CUT OUT blackened areas on wood right down to green wood. Prune out "mummies" and the supporting twig.
6. ROSES:—Prune off dead wood now. If fewer but larger blooms are desired, shorten the stems still more.
7. HOSE:—Check for leaks at fittings. Get LIGHT-WEIGHT, PRESSURE MASTER hose (3/4") and put HOSNAPS on for ease in connecting.
8. CRABGRASS CONTROL:—Apply now BUT not unless you have fertilized and cleaned your lawn first. Use DOW'S ZYTRON or AGRICOL—PRE-EMERGE or GREENFIELD'S TRIPLE ACTION. Remember! Good solid turf is produced by ADEQUATE FERTILIZING! PROPER MOWING! PROPER WATERING.
9. The use of crabgrass and weed controls is SUPPLEMENTAL—NOT BASIC.
10. REGAL LILIES are tender in spring and should be covered if FROST THREATENS.
11. LILACS like LIME: Use liberally around the plants.
12. SPRUCE GALL: Caused by special aphids. Spray once BEFORE MAY 1st. Really WET ENTIRE TREE with MALATHION.
13. PINE SHOOT MOTHS:—If trunks were not treated last year cover well BEFORE MAY 1st with DD-DIE.

McCLELLAN-BALL CO.
Everything for the Yard and Garden

880 S. WOODWARD, BIRMINGHAM, MICH.
FREE AREA DELIVERY Midweek 4-4133

Baldwin Auditorium Getting New Lights

There will be new lights soon in the Baldwin Public Library auditorium. Birmingham city commissioners Monday night awarded a contract for the installation of the lights to the low bidder, Fred W. Moore Electrical, Inc., for \$1,689.

Commissioners appropriated \$1,889 from the capital improvement fund to cover the fee of architects Linn Smith Associates for work on the library.

Board

(Continued from 1-A)

adopted for a three-year period. Though the contract with Wayne has not yet been executed, school officials hope for its adoption in time to initiate the program when "kindergarten-roundup" is held later this spring.

OTHER BUDGET ITEMS making up the \$100,000 increase in Bloomfield Hills operating expenses include a classroom for exceptionally gifted children at a cost of \$10,000.

Four additional buses to provide for the increased enrollment will cost an additional \$24,000. Increased numbers of teachers will cost \$75,000.

A \$100 raise in the salaries of teachers with master degrees will cost \$7,000. A slight raise for maintenance men amounts to \$8,000. Normal increment of \$100 for all teachers' salaries adds \$25,000 to the budget.

THE TENTATIVE BUDGET is based on the school district receiving its same percentage of the 15-mill property tax this year, but on the expectation of a rise in the property valuation within the school district due to increased building.

Should the assessed valuation be less than the anticipated \$105,000,000 or should the allocation board drop the school's percentage of the 15-mill tax, the tentative budget would have to be revised by the school board.

The Birmingham Eccentric Classified pages offer you a fine opportunity to sell your unwanted household goods.

The Birmingham Eccentric

Published weekly in The Eccentric Building, 1235 Bowers St., by the Birmingham Eccentric, Telephone ME 4-1100. Address all mail (subscriptions, change of address, Form 3579) to 1235 Bowers St., Birmingham, Mich.

Paul N. Averill, Publisher
Henry M. Sloan, Jr., Associate Publisher

Second-class postage paid at Birmingham, Ala.

SUBSCRIPTION RATES (In Oklahoma County)

One Year (12 Issues) \$5.00

Six Months (6 Issues) \$3.00

One Year (12 Issues) \$6.00

Six Months (6 Issues) \$3.50

Chicago Office Is Opened by B'field Agency

Ernest A. Jones, president of McManus, John & Adams, Inc., announced today that the Bloomfield Hills advertising agency has established a full-fledged Chicago operation through a merger with the George B. Hartman Co.

With Hartman's \$6,000,000, Jones of 990 Cranbrook Road, Bloomfield Hills, estimated MJA's total billing this year should approach \$80,000,000.

The Hartman Co. on May 1 will become McManus, John & Adams, Inc. (Chicago), Jones said. Fred J. Hatch of 3040 Henshaw Road, Birmingham, a senior vice president and member of the board of MJA, will become regional director of the Chicago operation.

George H. Hartman, founder and president of the agency bearing his name, becomes an MJA vice president and general manager of MJA-Chicago.

"WE HAVE contemplated this move for considerable time in view of the continued growth of our Chicago interests," Jones said.

"Acquisition of the Hartman Co., with its high reputation and distinguished account roster built over a quarter century, fits perfectly with our plans to provide the Chicago area with a strong, full-fledged Chicago McManus, John & Adams, Inc. operation with complete advertising facilities and able to draw on the combined resources of the national MJA organization."

McManus, John & Adams, Inc., founded in 1934, also maintains fully-staffed offices in New York, Los Angeles, Minneapolis, St. Paul and Toronto in addition to its Detroit headquarters.

IT HAS A WIDELY varied client roster including Pontiac and Cadillac Divisions of General Motors.

Dow Chemical, Minnesota Mining & Manufacturing, Bendis, Ameri-

laid and Standard (Ind.), and computing products and services ranging from consumer package goods to heavy chemicals and from athletic equipment to the United States Air Force.

In addition to its U. S. and Canadian operations, MJA has 35 overseas affiliates and places advertising in 18 languages in 70 countries.

Oakland University To Host Educators At April Meeting

Region A, including Oakland County, of the Michigan Association for Supervision and Curriculum Development (NASCD) will hold an area conference April 30 at Oakland University.

"Local Frontiers in Education—A Second Look" will be the theme of the program which is scheduled to be held from 4 to 9 p.m. Registration will begin at 4 p.m. in the south foundation. Discussion groups have been arranged to cover a number of topics relating to organization for instruction, instructional materials and materials and instructional areas.

In all, 19 various groups will meet. Some of the specific topics to be considered are teaching materials developed by creative classroom teachers; television-airborne, local and "closed circuit," programmed learning (teaching machines); changing concept of American democracy; and new emphasis in mathematics.

Also team teaching in the elementary and secondary schools will be discussed along with improvement of reading, what's new in the fine arts and the ungraded school. Region A of NASCD also includes Macomb, Wayne and St. Clair counties.

The University of Michigan was the first institution of higher education to have a nuclear reactor operating at one million watts, in 1958.

Mystery

(Continued from 1-A)

that Bobby's boots were on the wrong feet when his body was discovered. He wore the same clothing that he was reported missing in.

Mrs. Grinnan said she couldn't remember if she had dressed Bobby on the day of his disappearance or if he had dressed himself.

"He could have pulled his boots on the wrong feet," she said. "We bought them two sizes larger than usual so that he could dress himself."

WHEN NOTIFIED of discovery of the boy's body, Bobby's father had just returned home from circulating photographs and descriptions of his son to weekly newspapers in this area.

He had spent days away from his job as Detroit branch manager for the American Machine and Foundry Co. in an attempt to enlist support in the search for Bobby. Grinnan said he had scanned the lake area "foot-by-foot" and discovered no breaks in the ice or footprints in the snow leading to the lake.

THE GRINNANS moved to Bloomfield Township last summer from a suburb of Philadelphia. They have three other children: Joseph 19, Mary Lou 17, and Edward 8. Before his disappearance, Bobby had been attending special classes each afternoon at the Poppleton School in Troy.

The body will be taken to Merwood, Pa., for funeral services and burial on Friday. Local arrangements were conducted by Manley Bailey Funeral Home, 183 Oakland, Birmingham.

The parents suggest that any contributions be made to Christ Child School for Retarded Children, 31111 Lahser Road, Birmingham.

Pastor to Give Sandburg Reading At B'ham Church

The Supper Club of First Presbyterian Church, 1609 W. Maple Road, Birmingham, will present "An Evening with Carl Sandburg" as portrayed by the Rev. Alan Jenkins, pastor of First Presbyterian Church of Royal Oak, at 6:30 p.m. Tuesday.

Dr. Jenkins, a longtime scholar and friend of Sandburg, will give his interpretation of the Midwestern poet with readings and salty, humorous comments in his manner. In a white Sandburg wig and with a guitar, he will pantomime Sandburg's playing and singing of folk songs.

DR. JENKINS and Sandburg became friends when Dr. Jenkins was appointed minister of the First Presbyterian Church in the Lincoln biographer's hometown of Galesburg, Ill.

Articles by Dr. Jenkins on Sandburg have appeared in various newspapers and periodicals, and when Sandburg spoke in June 1960, at the Birmingham Art Festival, he stayed in the pastor's home.

This & That

(Continued from 3-A)

came ill, and nobody could be found to take over the route. So the senator, 40, got up at 5:15 a.m. and made the customary rounds for his son . . . and for the 30 subscribers. When asked what he thought of the President's suggestion for the "30-mile hike," the senator smiled: "While there are some people who have walked farther than I have, I haven't found anyone who has gotten up earlier." (Comment: Senator George McGovern, you really have set a splendid example for millions of other fathers—but perhaps the latter would prefer to do it for an afternoon newspaper route.)

At a New Orleans society ball one dowager asked another as they observed a young woman in a daintily low-cut gown: "I wonder who made her dress?" Adjusting her lorgnette, the second woman dryly replied, "The police, no doubt."

Thousands of U. S. men and women who live in the Miami, Fla. area, are reported unable to find employment, due to the presence of Cuban refugees who get jobs because they work for less money. To lessen the problem, governmental efforts are being carried out to find employment in other sections of the nation for these human beings. Many of them had to leave practically all their possessions behind them (including homes, bank accounts, clothing, etc.) in order to get Castro's permission to come to the United States.

Request for Picnic Approved by City

Birmingham city commissioners Monday night granted permission to the Covenanters Club of the First Presbyterian Church of Birmingham to hold a picnic in Springdale Park on the evening of Tuesday, June 4.

The Covenanters is a club made up of married couples and their families. Approximately 150 persons, including children, are expected to attend the picnic.

5 Area Residents Elected to Office By Detroit Group

Five Birmingham area residents have been elected to positions in the Michigan chapter of the Arthritis and Rheumatism Foundation, a Torch Drive agency in Detroit. William R. Kelly of Bloomfield

Newly-elected members of the board of trustees are Dr. John O. Easlinger of Bloomfield Township and Simon Knudsen of Bingham Farms. Mrs. John Sterling of Birmingham was re-elected to the board.

open evenings

MODELS

crafts facilities

SALES SERVICE HOBBY SUPPLIES

CRAFTS OVER 50,000 ITEMS STAMPS COINS

TRAINS PLANES BOATS

22521 WOODWARD AVENUE

PERDUE 20, MICHIGAN phone LL 3-2242

ENJOY... INDOOR... OUTDOOR... LIVING DURING THE SUMMER MONTHS WITH A

NEW PORCH ENCLOSURE

WE SPECIALIZE IN ALL TYPES OF PORCHES:

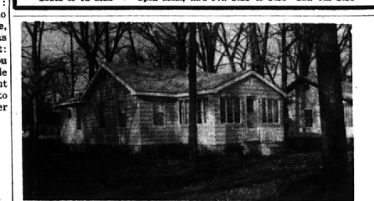
- TRU-SEAL AWNING WINDOWS
- SCREEN PANELS • SCREENING
- ADOR SLIDING GLASS DOORS

TRUSEAL

DONDERO SASH & SCREEN

1523 N. MAIN, ROYAL OAK LI 5-0600

South of 12 Mile • Open Mon., thru Fri. 8:30 to 5:30—Sat. 9:30



HOME ON THE LAKE—Strawberry Lake—Pinckney, Mich.
Can be used for a summer home or permanent living:
35 minutes drive from Maple and Telegraph Roads;
4 Bedrooms; Recreation Room (can be used for extra bedroom); Large Kitchen; Living Room with Enclosed Porch; Bath; Dressing Room; Utility Room, Gas Heat; Furnished; Garage; Row Boat and Dock.

PRICE: \$19,500

J. R. HAYNER (Realtor)

WO 3-1480

408 W. Main Street Brighton, Michigan



steady as she goes!

FEET FIRST... FIT FIRST

... with Stride Rite quality, and the patient, understanding attention of our fitters... to guide and guard baby feet every step of the way.



McSweeney's
Orthopedic Shoes for Children
Open Friday Evenings

277 Pierce Street MI 4-4488

PEABODY'S

154 Hunter Blvd., at Maple MI 4-5222
Plenty of free parking at rear of Store!

ROLLED ROAST Sirloin Tip or Rump 99¢ lb.	Gunsberg's Tasty CORNED BEEF 79¢ lb.
Peachke's BACON 53¢ lb.	Fresh GROUND BEEF 55¢ lb.
Rib End PORK LOIN ROAST 29¢ lb.	

PEABODY'S QUALITY

Fresh PRODUCE

ASPARAGUS
23¢ lb.

Indian River White GRAPEFRUIT 3 for 29¢

Large, California AVOCADOS 2 for 35¢

Crisp & Tender, Packaged CARROT 10¢ Bag

BIRD'S EYE FROZEN FOODS

PEAS, 10 oz. Pkg. 2 for 35¢

TIDE 29¢ FAB or DUZ 25¢

OPEN EVERY EVENING EXCEPT SUNDAY. SUNDAY HOURS: 10 a.m. to 8 p.m.
NO SPECIALS ON DELIVERIES

Stowaway by **STETSON**

packed in a multi-color store-away box!

you shape it in just 10 seconds!

A sensational new roll-up hat!

UNROLL IT
SHAPE IT
WEAR IT

in just 10 seconds!

You'll go first class in this packable Stetson casual hat... so light and comfortable—it weighs just 3 ounces, so flattering—because you shape it yourself! Stop in and see it today.

\$13.95

Dickinson's

Wabek Building Birmingham
Saginaw at Lawrence Pontiac

Open Thurs. & Fri. Nights Open Mon. & Fri. Nights