

NEWS OF BUSINESS

B'ham Dentist Directs Annual State Meeting

The appointment of Dr. Edwin W. Deer, 645 Arlington, Birmingham, as general chairman of the Michigan State Dental Association's 106th annual meeting has been announced by Dr. J. Robert Short, president.

The meeting will be held May 6 through 8 at the Statler-Hilton Hotel in Detroit.

Dr. Deer is responsible for the overall program of the meeting which will consist of a business session, a series of essays, study clinics, scientific exhibits and television clinics.

Major manufacturers of dental equipment and supplies will exhibit their latest product developments. More than 4,000 Michigan dentists and their families are expected to attend.

DR. DEER was born in Birmingham Nov. 27, 1913. He attended Birmingham Public Schools and received his DDS degree from the University of Michigan in 1936. He served in the U. S. Navy.



DR. EDWIN W. DEER

New Firm Opens In S'field Plaza

Announcement of the formation of a new business is made by William R. Henry, mortgage banker, of 30550 Northgate Drive, Southfield. The firm, a Michigan corporation, is known as Northland Mortgage and Realty Co., and its main offices are located in the Southfield Office Plaza, 17000 W. Eight Mile Road.

Henry was until recently president of General Mortgage Corp. and executive vice president of Lee Mortgage Corp. of Detroit.

B'ham Man Moves To Job of Retiring Bloomfield Resident

Appointment of Bruce L. Hilkene, 851 Westchester Way, Birmingham, as director of personnel activities for Chevrolet Motor Division has been announced by Norman J. Ellis, general director of personnel.

Hilkene, who has been personnel director at Chevrolet Central Office, succeeds Christian A. Addison, 3715 East Point Lane, Bloomfield Hills, who has retired under provisions of the General Motors Retirement Plan after nearly 30 years of service with Chevrolet.

Hilkene joined Chevrolet as college graduate in training at the division's truck body and stamping plant at Indianapolis in 1948. Addison joined Chevrolet as chief of plant protection at Chevrolet-Plant in 1935.

Manager Appointed At Fisher Division

The appointment of Glenn W. Wiegand as general manufacturing manager of Fisher Body Division is announced, effective May 1.

Wiegand has been general factory manager of Fisher assembly plants in the Western States since April, 1961. He resides at 811 Shirley Drive, Birmingham.

Professor to Speak

The Oakland County Chapter of the National Association of Accountants meets at 6 p.m. Thursday at Devon Gables, Dr. H. E. Miller, professor of accounting at Michigan State University, will speak on "Changing Concepts in Accounting Principles."

Jaycees to Host Regional Meeting, Vote for Officers

Birmingham Jaycees will host the 1963 spring Region C meeting at 6:30 p.m. Monday at the Knights of Columbus Hall, 80755 Southfield Road, Southfield.

Following a chicken dinner, regional officers will be elected, and candidates for statewide Jaycee offices will be introduced.

GENERAL CHAIRMAN is James Willoughby, past president of the Birmingham chapter. Other committee heads are James Hornaday, promotion; John Slocum, reservations; Roger Crimmins, special promotions; Fray Gross, dinner; George Smith, publicity; and William Taylor, finance.

Reservations may be obtained from John Slocum, 2684 Windermere, Birmingham.

Executive Attends Reception As Guest Of Automobile Firm

Paul Fleck, a vice president and member of the Board of Directors of Albert Kahn Associated Architects and Engineers, Inc., Detroit, attended a reception and luncheon Wednesday in Kenosha, Wis., at the invitation of J. W. Mueller, manufacturing manager for American Motors Corp.

The luncheon was held to observe the start of American Motors' newest expansion and modernization program of its Kenosha automotive facilities for which the Kahn Associates are architects and engineers.

Fleck lives at 28238 Sheridan Drive, Beverly Hills.

Passport Photographs

4 for \$2.00
20 Minute Service
HARRIS STUDIO
46 Glenwood
Pontiac — FE 4-0102

Moths Can't Afford Mink

and ladies with mink can't afford moths

Don't risk costly damage to your scientific methods and modern materials and equipment to give you professional protection against moths, ants, spiders and other insects. Call the 100-year-old Rose Company now. Cost? Only pennies per day! Rose Exterminators. The Rose Man uses modern, for Co., LI 5-2222.

FREE

5x7

ENLARGEMENT

(Color from Kodacolor — Bl & Wh from Black & White)

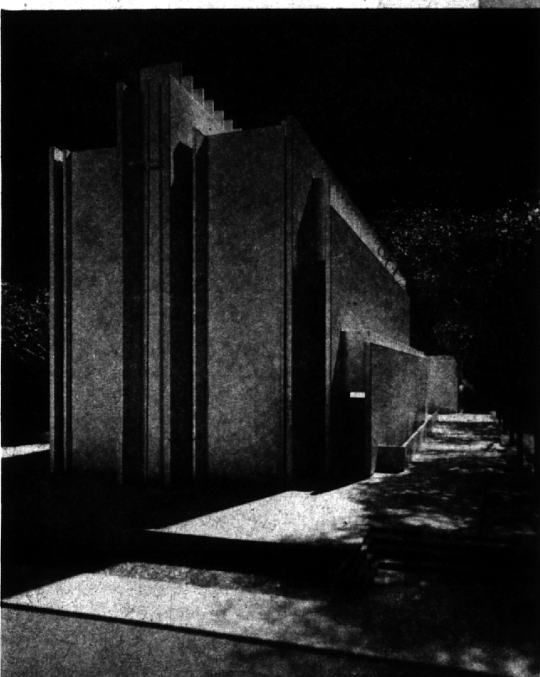
WITH EVERY ROLL OF KODACOLOR OR BLACK & WHITE FILM YOU BRING HERE FOR PROCESSING AND PRINTING

Free Parking Now Available Across the Street For Our Customers

BIRMINGHAM CAMERA SHOP

"Serving Birmingham 25 Years"

168 South Woodward Everything Photographic MI 4-0510
Open Daily Mon. thru Fri., 9 to 6 p.m. Saturday, 9 to 5:30 p.m.



ENTRANCES ARE planned for major streets at both ends of the University Reformed Church (Dutch, Reformed) in Ann Arbor. One approach is from town, and the other, shown here, is from the University of Michigan, facing the tall back wall of the sanctuary which follows shaded walks to the entrance door.

ANN ARBOR CHURCH

Birkerts & Straub Announce Construction of Award-Winner

By ETHEL SIMMONS
Business Editor

Construction is just getting underway this week for the University Reformed Church, Ann Arbor, but the design is already an award-winner for Birkerts & Straub, architects, 287 E. Maple Road, Birmingham.

The Church Architectural Guild of America selected the serene and nearly windowless structure (thin vertical openings filled with colored glass in the front wall) for an award at its annual program in 1962.

The church will be located adjacent to the University of Michigan campus and expects to draw approximately half its membership from the students there.

WINNING recognition for their work is nothing new to Latvian-born Gunnar Birkerts and Frank A. Straub, who opened architectural offices four years ago.

Their first completed job, a summer residence in Northville, received an award from the American Institute of Architects in 1962. It features a simple square plan, with doors leading from all rooms onto a porch overlooking a 400-acre apple orchard.

The partners are both residents of the Birmingham-Bloomfield area. Birkerts at 1830 E. Tahquamenon Court, Bloomfield Hills, and Straub at 1021 Norwich, Birmingham. Straub is currently serving as a member of the Troy City Plan Commission.

BEFORE teaming up, they had been affiliated with Minoru Yamasaki and Associates, Birmingham. Birkerts was principal and chief designer, and Straub was principal and project designer.

Previously, Birkerts had been engaged in Bloomfield Hills-based architectural projects with Eero Saarinen & Associates where he was project designer.

Other work currently under construction by Birkerts & Straub includes 1300 Lafayette East, a luxury high-rise apartment development in Detroit, and the Lillibridge Elementary School, one of the last projects under the present school bond issue for Detroit.

IN all their architectural designs, Birkerts & Straub seek for elements other than "style," says Straub, "A customer may ask for a Colonial house, but what he really wants is its feeling, scale and warmth."

is an all-pedestrian area with parking situated underground or in a depressed area not visible from the street.

One of two planned 30-story apartment buildings is now being constructed and should be ready for occupancy this fall. Use of glass areas has been reduced considerably, but there will be bay windows with two-foot projection for each apartment.

CONSTRUCTION of 60 two-story town houses is next. Other facilities will include a year-round swimming pool, bath house, cabanas, steam room and tennis courts.

PART OF an \$18 million Groat development program, 1300 Lafayette East will be a "city within a city," according to Straub. It will

pbi

A Professional School of Business
Founded in 1896

Mid-term Opening April 22
(Day & Night School)

Accounting
Secretarial
Clerical
Office Machines
Business Administration
Speedwriting Shorthand
Nancy Taylor Charm Course

BUSINESS INSTITUTE BUILDING
PONTIAC BUSINESS INSTITUTE
18 WEST LAWRENCE STREET
Accredited by the Accrediting Commission
for Business Schools, Washington, D. C.

Announce Earnings

The Detroit Bank and Trust Co. has announced net operating earnings of \$2,418,305 for the first quarter of 1963, equal to \$125 a share, according to Raymond T. Perring, 545 Yarrowood, Bloomfield Hills, chairman of the bank.

EXECUTIVES IT'S BETTER THAN GOLD

To find your right spot. Hundreds of companies are seeking qualified talent. By 1975 more executives will be manufacturing products than are yet to be discovered. Where do you fit in this changing world? If you are restless and desire a new challenge you will be interested in our Executive Search Program. World's New Dimension in Career Opportunity. Submit resume to:

Kenneth S. Temont
WORLD EXECUTIVES, INC.
Maple Office Center
960 E. Maple Road
Birmingham, Mich.
Phone 467-3234
INC

Chicago - New York - Philadelphia - Paris

"Today is the day I have been looking for. All my life has been spent in preparation for it."

Not An Employment Agency

Auto LEASING for LESS!

Planned Auto Management Lease designed for superior individuals and fleets

New Auto Every Year For Less Than Average Ownership

Our lease cost includes complete insurance major maintenance, and accessories as listed

Chevrolet Impala Sports H.T.	96.85	Pontiac Bonneville Conv.	119.85
Chevrolet Impala Conv.	106.85	Pontiac Grand Prix	119.85
Pontiac Bonneville Coupe	115.85	Buick Riviera	129.85
Cadillac Conv.	168.85		

Other makes and models at comparable savings

ACCESSORIES: Power Steering, Automatic Transmission, Radio, White Side-wall Tires, Outside Mirror, Heater, plus other convenient options on most models at no extra cost.

Price based on average mileage 200 per year. Price plus 4% title, sales tax and monthly rental rates.

PLANNED AUTO MANAGEMENT
911 East Maple Road, Birmingham, Ala. 35214
MI 5-7214

Scotts Does 3 Jobs At Once

AND SAVES YOU MONEY!

Halts applied now will prevent crabgrass seeds in your lawn from becoming heavy destroying plants this summer. Turf Builder gives your lawn that much needed spring feeding without burning ... and do 2,500 square feet in a half hour!

Now You Can Save \$2.00

HALTS and TURF BUILDER
(12.50 If Bought Separately)
Now BUY BOTH For \$10.90

Maskill Hardware
4400 N. WOODWARD
ROYAL OAK, MICHIGAN LI. 9-3333

A MAN'S HOME is his castle!

Make sure your loan, as well as your home, fits your family. See us first for advice on financing plans. Our long, local experience and first hand knowledge of this area's real estate values are at your disposal. We can tailor-make your loan to suit your circumstances. Our low-cost, long-term financing can be the basis of happy home life.

"Instituted for local people . . . by local people"

Birmingham
FEDERAL SAVINGS

99 W. Maple
Corner of Pierce
MI 4-1711

Barkley
3055 W. 12 Mile Rd.
LI 5-7610

FEDERAL SAVINGS AND LOAN
SAFETY OF YOUR SAVINGS
UP TO \$10,000
INSURED
FEDERAL SAVINGS CORPORATION