

## Former Bham Pastor Heads Adult Ed. Unit

Dr. Robert A. Macoskey, who was associate pastor of the First Baptist Church here from 1956 through 1958, has been appointed to a three-year term as chairman of the general education courses in religion and philosophy at Denison University, Granville, O., where he has been acting chairman the past two years.

Macoskey joined the Denison faculty as assistant professor of religion in 1960. He had been associate professor of religion and philosophy at Alderson-Broaddus

## 2 Go on Band Tour

Two Alma College students from Birmingham—Janet Noffs of 1180 Norfolk Drive and Gordon Robb of 2966 Pine Hill Drive—have been touring with the college's concert band this week. Band members gave up part of their spring vacation to make the tour of Michigan high schools.

College in Philippi, W. Va., for two years after he left this city. Dr. and Mrs. Macoskey and their two children, Eric, six, and Kristian, three, reside at 14 Samson Place, Granville, O.

## How Is Your Garden Wall?

Has the frost pushed your wall out of line? Has it been washed out?

Why not build it right the first time? We have the experience and know-how for all types of wall construction and repairs.

### HOW DOES ONE LOCATE RARE PLANTS?

There is a book published periodically which lists the known growers of all plants propagated from the large arboretums of this country. Rare plants are first tested in the large arboretums of Boston, Chicago, and St. Louis, and nurseries receive their stock from these sources. A copy of this book is available for your examination in our office. Please feel free to stop in.

## Lawrence E. Smith

landscape design & construction

Member of Michigan Association of Landscape Architects

720 E. Maple (Bet. Hunter and Adams)

26 Years in Birmingham MI 4-2036

## Remodeling Minded?



Install this beautiful wash-and-wear Marlite paneling yourself!

You can turn an old interior into a bright new one with this economical tone and groove paneling. Marlite with its self-coating plastic finish resists stains, marks, dents. Easy to handle, it goes up fast over old or new walls, cleans with a damp cloth. Available in colors, beautiful Trendwood finishes, marble patterns.



Remodeling Ideas Portfolio

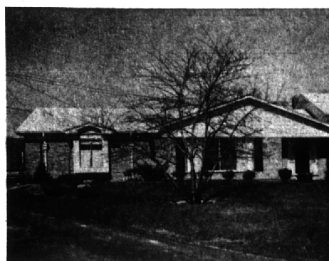
Visit our showroom. Inspect our display of Andersen Windows (7 styles). Authentic Colonial built up entrances, etc. You can buy them all from any lumber dealer. Get a "Remodeling Ideas Portfolio". If you can not come in, call us and we will deliver the portfolio.



**KIMBALL & RUSSELL INC.**  
WHOLESALE BASH AND DOOR DISTRIBUTORS  
2127 FENKEL AVE. DETROIT 38, MICH. UN. 5-2420

## PUT AN END TO DREAMING . . .

This home is worth looking into



Open the front door and inspect 5 bedrooms, 2½ baths, Separate Dining Room, Large family room with fireplace  
Breakfast Room, Carpeting, draperies  
Many bookshelves and closets  
Irregular Patio  
Charming for Bar

Member NATIONWIDE find-a-home SERVICE, INC.

**FRED PIERCE INC.**  
460 NORTH WOODWARD, BIRMINGHAM, MICH.  
Midwest 7-1414



## DOWN TO EARTH

# New Strawberries Need Sunny Location

On your home property do you have a place where you can grow strawberry plants in full sun as a border for a colorful annual or perennial flower bed?

This week we want to bring to your attention a new introduction in strawberries called "Genewa," which comes to us as the result of extensive testing at the N. Y. State Agricultural Experimental Station. It is everbearing.

The berries are large and very good for freezing which is the prime test on the commercial market today. They are sweet with dark, red flesh. They will produce berries from mid-June until frost and should be spaced about 20 inches apart.

AS WE ARE "talking" about good strawberries, good apples should not be overlooked.

Our Birmingham Bob Nitchke has as his hobby the development of new and rare fruits. Since becoming interested in grafting scionwood on their fruit plants so that they, too, could enjoy this horticultural hobby. All it takes is a tube of "Tangle"

Mrs. Burlingame

## Exhibit

(Continued from 1-D)

brown. Eileen Auvil's wall hanging is marvelous texturally and her color in the wall hanging and in a red scarf is sensitive and strong.

An applique wall hanging by Shirley Kallus, called "Bird and Butterfly," is filled with detail, but manages to avoid a cluttered look. Arlen Linn contributes unfinished weavings to demonstrate the use of small hand looms.

THE CERAMICS on display give us a fascinating variety of personal approaches within an exceptionally high level of craftsmanship.

Three fine pieces by Majia Grotz, former head of ceramics at Cranbrook, have an unerring sense in relating glass design with a clear shape.

John Foster's strong precision of shape with each curve carefully balanced is softened by the pebbly glazes of granite and vanadium.

Susan and John Stephenson's pots are a bit repetitive, but John Stephenson's "32 Planter with Slab Top" is excellent in color glazes and relaxed in asymmetrical shape. Gwynne Dart's ceramics are each unique in shape and glaze color and resolved as a unit.

ANNA M. SMITH'S rough textured slab bottle pinched together at the seams is finished with a smooth bottle lip. Hiroko Oba's elegant covered jar has a freely dripped design. Richard DeVore shows a large slab and thrown vase which has both a freedom of design and an elegance of glaze color.

Gordon Ores's strict perfection of the cylinder is warm in feeling. And the warmth of Nancy Manes Plumb's tea set is not without perfection.

Sven Kline's glass relief is warm and simple in its leaded arrangement.

THE METAL WORK in silver and gold includes some fine jewelry, utensils, silver sculpture and cloisonne.

Gold earrings and pin with black pearls by Russell Bolt are flamboyantly shaped but not without some restraint. Bruce Blyth's gold ring with topaz develops a rectangular shape unusual for a ring.

Norma M. Wisner combines

"Queen Elizabeth," tie for first place in their class. As far as climbers are concerned, (hooray!) that old favorite of many years, "Paul's Scarlet Climber" leads the pack.

WHEN YOU study the scores for hybrid tea roses the leaders are "Tropicana," "Crimson Glory," "Charlotte Armstrong" and they can't push "Peace" off the list as the Number One leader.

Floribundas give the grower constant flowers, and here again, Betty Prior is neck in neck as a leader with "Fashion," which is also an old familiar choice.

All of the eager introducers hope that their pride and joy will win top honors from discriminating horticulturists because it will assure them of an enviable annuity as long as they live. Many roses are discovered by a Joe Dokes, who lives a quiet life on his acre.

IN THE American Rose Magazine it has been reported that "Nativity"—which is a colorless water-soluble material used in hospitals for germicidal, antiseptic, fungicidal and deodorizing purposes—so far has provided the best control for mildew on roses.

## GIL JORDAN SAYS

# The Occasional Cards Are For Strictly Special Days

"Just look at this lovely assortment of greeting cards I picked up today," my wife exclaimed as she kicked off her shoes after a hard day of shopping.

"Fifty cards—come to fit every occasion," she chortled, "and I only paid a bargain! I said, 'I only need a card for my mother-in-law, but I'll practically never have to buy a card again because no matter what occasion arises I'll have just the card we need, and these are gone the store has boxes and boxes more which I can always pick up. Why do you realize if I went out and paid the going price of 25 cents each for these cards it would have cost me \$12.50.'"

"IT DOES sound like quite a bargain," I agreed, "that is if there's anything you can use."

"Use!" she snapped, "they're beautiful and you'd wonder how they can afford to make them so cheap, but that's their headache not mine."

"I really don't know what you'd do," she settled on, "if you didn't have me around to pick up all these bargains for you."

About two weeks after the greeting card bargain had been consummated, my sister's birthday rolled around. New was the time I would dig into these cards which I had so expensive but really cost only three cents each. It was a bargain at that when you consider that the card cost less than the postage stamp.

AS I FUMBLed through the cards I soon noticed that they were a little off-beat.

The first one I examined carried a picture of a gopher, or perhaps it was a woodchuck who was grinning broadly. The message read, "Happy Groundhog Day To A Dear Little Boy."

Since Groundhog Day was relatively meaningless as far as holidays were concerned and since I knew of no "dear little boys" who cared much about groundhogs anyway, I could see no use for the card either presently or in the future.

"HAPPY TREE Planting on Arbor Day" was unusual to say the least, as was "Congratulations on Breaking Your Engagement." Act-

silver and cocobola wood in two candle holders. Robert Engstrom's silver pin with Mossagato stone is well done. Two of his other pendants have a bold looking sense of weight.

Earl Krentz's boxes are fun to look at and masterful in craftsmanship. Ernest Mendelsohn's sterling silver coffee pot is well executed, but is exhibited in close quarters. This one flaw serves to emphasize how well thought out was the whole installation.

ually these cards weren't bad if you could only hit the right occasion.

"Happy Golden Wedding Anniversary to My Favorite Aunt and Uncle" would be fine for some people but we have no surviving married aunts and uncles.

"Best Wishes For a Long and Happy Life in Your New Trailer" carried a homey touch, as did "A Valentine Wish for My Old Dander Man," but at the moment I had to reject these particular greetings.

"Congratulations on Making the Final Payment on Your Car," might be all right for a banker to send to a customer but I knew of no close personal friends who would appreciate it.

AFTER GOING through all 50 of the assorted cards I gave up hope of finding one suitable for my

sister's birthday. However, the local drugstore had the very card I wanted.

I haven't completely given up on eventually finding a card I can use on some future occasion. Some day an odd-ball situation is bound to arise where one of these cards will come in mighty handy.

In the meantime, if you ever want to send a friend a beautiful reminder of Pickle Week or Farm Safety Week, you're invited to look me up. I may have the very card you want.

Dr. Donald H. Robinson, a medical consultant for Chicago's National Labor-Management Foundation, says that a man uses between three and four calories a minute while showering, shaving and getting dressed.

## Birmingham Insurance Agency

114 S. Woodward

Representing:

AMERICAN INSURANCE CO.

EMPLOYERS GROUP

HOME INS. OF NEW YORK

NATIONAL UNION

OHIO CASUALTY CO.

TRAVELERS

ST. PAUL FIRE AND MARINE

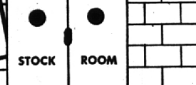


OSCAR F. PETERSON  
BRUCE F. RANDALL  
FRANK W. WHITSON

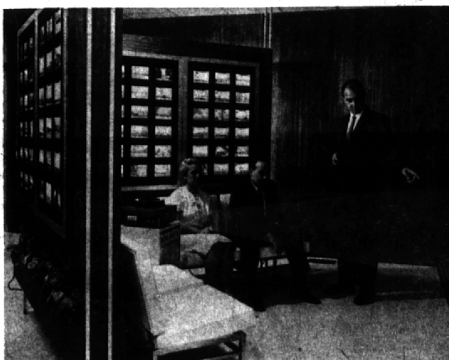
MI 4-2422

"After We Sell We Serve"

WE DON'T  
"STOCK HOMES . . ."



we "Showcase'em" for buyers to see!



Uniquely lighted display showcases and an exclusive Rear Projection Slide System attract evening traffic to Showcase of homes where your home is displayed to sell!

Slides in sparkling color highlight your home, command buyer attention! Every home featured in both Hall & Young Showcase Centers.

## Mr. and Mrs. Seller

EVERYDAY IS DISPLAY DAY for your home at both Showcase of Homes Merchandising Centers! This means constant, dramatic, hard-selling EXPOSURE to potential buyers with no chance of your home

being "lost" in stock! You have every right to expect that the latest, most effective marketing methods be used in selling your home . . . and Showcase of homes offers just this selling service to you!

ANOTHER PROGRESSIVE, NO-COST SERVICE OF . . .

Showcase of homes  
HALL & YOUNG INC. REALTORS

In Birmingham: 345 S. Woodward Ave., MI 6-7900  
In Bloomfield: 4114 W. Maple Road MA 6-5900

DEVELOPERS OF  
**Colonial Communities**  
CONCORD GREEN  
EAST GREENWICH GREEN  
WEST GREENWICH GREEN  
NOW—METAMORA GREEN—  
Wm. J. PULTE, Inc.  
MASTER BUILDERS  
BIRMINGHAM  
MI. 6-0105  
PULTE - BULT - MEANS - BETTER - BULT

**SPRING FIX-UP**  
Use our one-stop service for Spring Fix-up materials. Save time, money and effort.  
PLYWOOD  
4' x 8' Panels \$2.88 ea.  
as low as  
DIMENSION LUMBER  
2" x 4' - 6' 40¢ ea.  
Fir #2 btr.  
FENCE POSTS  
3" x 7' Cedar 49¢ ea.  
at only  
SCREEN WIRE  
All widths aluminum at only 10¢ sq. ft.  
PATIO SLABS  
Many Sizes and colors. As low as 3 for \$1

WE WILL HELP YOU DO IT YOURSELF OR RECOMMEND A QUALIFIED CONTRACTOR

**BIRMINGHAM LUMBER & SUPPLY CO.**  
1025 HAYNES STR. MI 4-3636

Between Adams & Hunter—5 blocks South of Maple (East of Greenfield)  
Hours: Mon. Thru Fri. 7:30 to 5:30 P.M.—Sat. 7:30 to 4 P.M.