



AFS Planners

Getting ready for the annual American Field Service Festival at the Grosse Pointe War Memorial, Sat., April 27, are Mrs. Guy Pitts, 5875 Wingerd, Bloomfield Township, and Mrs. A. O. Thalacker, 270 Lowell Court, Bloomfield Hills, president of the Detroit Metropolitan Board of AFS. The ladies are wrapping international gifts that will be sold at the festival. At the present time there are eight AFS students in the Birmingham-Bloomfield area.

Robert B. Lowry Given GOP Post

Robert B. Lowry, 1420 Ashover Drive, Bloomfield Township, has been appointed legislative director for district three, according to Charles L. Lyle, chairman of the Republican Party in Oakland County. District three includes the cities of Birmingham, Bloomfield Hills, Keego Harbor, Troy, Walled Lake, Wixom and Milford. Also included in the district are the townships of Bloomfield and West Bloomfield. Lowry, former Macomb County chairman, has been active in Re-

publican politics since his move to Michigan in 1952. Since his move to Oakland County in 1959, he has served the GOP as a precinct worker, member of the county committee, task force chairman, campaign co-ordinator in both the 1962-63 elections and as a director on the board of the Bloomfield Township Republican Club.

During the recent campaign for chairman of the Republican State Central Committee, Lowry served as campaign manager for John A. (Jack) Gibbs.

PEOPLE'S COLUMN

Religion Not Only Reason To Oppose Fluoridation

To the Editor:

There have been statements made publicly that anyone who is against fluoridation of the city water is either a food faddist or a Christian Scientist. Well it isn't so.

Personally, I think it's a waste of money. The benefits aren't that substantial. The gallons of water that go down the drain one way or another seems like a way of getting rid of sodium fluoride rather than giving us the benefit of it

from drinking our few glasses of water a day. Then there are those who object from a health standpoint. Most intelligent people are just naturally more health minded than they used to be. The people I know are

careful to eat a balanced diet and they are happy with the drinking water the way it is.

THEY KEEP their children away from sweets and soft drinks as much as possible because they know that teeth are better off without them. That is a proven fact that any dentist or doctor will attest to.

In fact, if we were to put on a strong campaign for sugar substitutes instead of a campaign for fluoridation, we would see our children's teeth improve 100 per cent. Now, people who because of their religion cannot accept modification are to be sympathized with.

April 11, 1968 THE BIRMINGHAM (MICH.) ECCENTRIC 3-06

If I were a Christian Scientist, I would feel very strongly against having the public water supply medicated.

THEN THERE are the people who feel that something has been "put over" on them. They are "WE the people" who have been occupied with their own private pursuits and suddenly were made aware that someone was making momentous moral decisions for them.

They are "the people" and as the people have a right to feel free to express themselves and to get their

side of the argument aired in the press and over the air and on TV or anywhere they can, to fight for what they think is right.

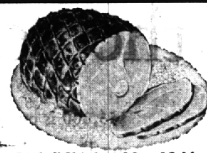
They are not so much against something as for something. They are for what they think is right, and what an American thinks is right is usually something that retains at least one of our four freedoms.

CONCERNED

The Birmingham Eccentric Classified pages offer you a fine opportunity to sell your unwanted household goods.



ALL A&P STORES CLOSED GOOD FRIDAY 12 NOON TO 3 P.M.



"Super-Right" Skinless 10 to 12-Lb. Sizes

Fully Cooked
Semi-Boneless
HAMS

WHOLE OR HALF **59¢** LB. No Center Slices Removed

"SUPER-RIGHT" QUALITY SKINNED
SMOKED HAMS

Shank Portion **35¢** LB.
Butt Portion **45¢** LB.

Whole Hams 13 TO 16 POUND SIZES **43¢** LB.

Center Cut HAM SLICES **79¢** LB.

"Super-Right" Quality, USDA Insp., Grade A 18 to 24 Pound Size **37¢** LB.
6 to 15 Pound Size **39¢** LB.

TURKEYS Reynold's Heavy Duty Foil 25-FT. ROLL **59¢**

CANNED HAMS 8 LB. CAN **5.29** 6 LB. CAN **3.99**

HEAD LETTUCE Fresh, Crisp Solid Heads **10¢** 24 SIZE

Sweet Potatoes A&P WHOLE 2 18-OZ CANS **49¢**

Crestmont Sherbet or **Marvel Ice Cream** 15-GAL. CTN. **49¢**

JANE PARKER—SAVE 10¢
CHERRY PIE EA. **39¢**

SAVE 10¢—JANE PARKER DANISH
All Butter Coffee Cake 14-OZ. SIZE **59¢**

Dole Pineapple CHUNKS TIDBITS OR CRUSHED **2** 13 1/2-OZ. CANS **39¢**

DOLE HAWAIIAN
Pineapple Juice 3 1-OZ. 14-OZ. CANS **79¢**

Sunnybrook Large Grade A
Eggs DOZEN **39¢**

All prices in this ad effective thru Saturday, April 13th in all Eastern Michigan A&P Super Markets
THE GREAT ATLANTIC & PACIFIC COAST COMPANY, INC.
A&P Super Markets
AMERICA'S DEFENDABLE FOOD MERCHANT SINCE 1927

WITH THIS A&P COUPON
SAVE 50¢ WITH THIS COUPON
GOOD TOWARDS THE PURCHASE OF ONE 3-PC. PLACE SETTING OR 3-PC. COMPLETE SET
Golden Dawn
Melmac Dinnerware
Good through Saturday, April 13th in all Eastern Michigan A&P Super Markets ONE PER FAMILY—ADULTS ONLY

WITH THIS A&P COUPON
FOR CEREALS OR COFFEE
Half 'n' Half QUART CARTON **39¢**
Delicious for Oyster Stew too
Good through Saturday, April 13th in all Eastern Michigan A&P Super Markets ONE PER FAMILY—ADULTS ONLY

A&P Brand Frozen, Sliced
STRAWBERRIES 10-OZ. PKGS. **2** **39¢**

WITH THIS A&P COUPON
SAVE 50¢ WITH THIS COUPON
GOOD TOWARDS THE PURCHASE OF ONE 3-PC. PLACE SETTING OR 3-PC. COMPLETE SET
Golden Dawn
Melmac Dinnerware
Good through Saturday, April 13th in all Eastern Michigan A&P Super Markets ONE PER FAMILY—ADULTS ONLY

KRESGE'S
for one-stop family shopping and saving!

CHOCOLATE EGGS!



3 Days Only! Reg. 97¢ lb.:

Save 29¢ lb! Fill Easter baskets with delicious solid milk chocolate eggs. Foil wrapped. **68¢** lb.

ORCHID CORSAGE



Friday & Saturday! Compare at \$3.50

Special! This Easter, give her a professionally styled orchid corsage in acetate oval box. A truly sensational value!

CUSTOM PICTURE FRAMING
Your favorite canvas, water color or prints
EXPERTLY FRAMED

Select your frame from many beautiful styles and finishes
KRESGE'S — BIRMINGHAM
KRESGE'S — NORTHLAND CENTER

West Maple at Henrietta, Birmingham

Open Thurs. & Fri. Evenings Till 9 P.M.

"CHARGE IT" AT KRESGE'S