

Franklin Budget to Consider Roads, Police, Village Green

By NITA HARD
Special Writer

FRANKLIN—With the five-year, eight-mile road program completed this year, the council has set Wednesday as a date to study fiscal needs and develop a proposed budget.

Special consideration will be given to the destiny of village roads, the volunteer police department and development of the village green.

Monday night, the council disposed of other pressing business.

Poor general drainage of the area is blamed for 95 per cent of the troubles reported.

IN ORDER TO cover the estimated \$4,500 for the construction of 4,000 feet of deep ditches; a culvert under 13 Mile and inspection

Alternate X-Ways Decision Delayed

Presentation of alternate east-west expressway routes through South Oakland has been delayed. Irving J. Rubin, administrative assistant to the state highway commissioner, John C. Mackie, said another month is needed to finish the presentation. The routes had been promised for mid-April.

As presently planned, the presentation will be made as public officials of all communities affected by either of the routes meet. Rubin said a detailed report and maps also will be available.

ALTHOUGH THE public may attend, the discussion will be confined to the officials, Rubin added. Separate meetings will be held soon after in which residents may take part. One will be held in Oakland and one in Macomb County. Meetings with each of the cities will then be held.

Construction of the routes is scheduled to begin between 1967-72.

Aboard Carrier

Robert E. Schubert, radioman, USN, son of Mr. and Mrs. O. R. Schubert of 2717 Garden Way, Franklin, is serving aboard the attack aircraft carrier USS Hancock, enroute to Pearl Harbor, Hawaii, for three weeks operations to train ship's personnel and qualify Navy pilots for carrier deck landings.

services, property owners will have to contribute about \$50 a lot to alleviate conditions. At least 10 signatures are necessary to establish such a district.

The village offices and library building will get some attention this spring. New aluminum siding to resemble the board and batten exterior was authorized Monday night. Minor landscaping and planting will also perk up the little structure that once was a wood shed and later a real estate office.

A BROAD PLAN to re-do the entire village green was modified to include only grading in spots and possibly the addition of new trees and some reseeding. Work on these will be scheduled for fall, after the annual roundup in September.

Councilman Edmund Webb urged the council to consider its position on sewers, soon. Stating that he had read that Lathrup was interested in negotiating for the space in the Evergreen Interceptor allocated for ultimate use by Franklin, Webb wants his colleagues to take some official action which would indicate to Oakland County Franklin's interest in future capacity rights even though voters defeated ballot proposals three times.

THE 7 SEAS

Import Shop

IS OPEN

For Business

at our

NEW ADDRESS

820 S. Washington

10 A.M. to 5 P.M.

Wednesday, Thursday,

Friday & Saturday

UNUSUAL GIFTS

ART OBJECTS

• Collectible Items

• Foreign Imports

• Spanish Jewelry

EASTER PARADING

is fun in

Pro-tek-tiv
the finest in children's shoes



Red, Black and White Patent Leather

HANSEL 'N' GRETEL SHOPPE
135 S. Woodward Ave., Birmingham
Open Thurs. Fri. nights
Easter Week. MI 6-4722

Free parking in rear



Louis J. Colombo, Jr., (left) is sworn in as a Bloomfield Hills city commissioner by Clark W. Lee, another new commissioner. Robert Stadler (right). Others taking the oath of office are Mayor Lyman J. Craig and David W. Lee, another new commissioner.

RAMUC' ENAMEL KEEPS YOUR POOL BEAUTIFUL

season after season

• Ramuc, based on fine chlorinated natural rubber, is America's number one pool paint—proven in more pools than any other paint.

• Easy to apply, resists blistering, flaking, chipping, cracking.

• Gives lovely, easy to clean, tile-smooth finish.

• Fade-resistant. Stands up to water-treatment chemicals.

• There's a finish for every pool: metal, concrete, plaster.

Come in and get your free 32-page "Handbook on Painting Swimming Pools"—contains valuable pool care tips.



Ramuc is a product of INERTOL CO., INC., available at

STEELCRETE

Farmington, Michigan

GR 4-3601

Craig

(Continued from 1-A)

married and has two children, Louis III and Alice.

DAVID W. Lee, the other new member of the commission, is in his 10th year on the Bloomfield Hills School Board, of which he is a former president. He also is truck advertising manager of Ford Division of Ford Motor Co.

Lee is married and has two sons, David, Jr., a lieutenant in the Air Force; and Thomas, a junior at Dehon University in Granville, Ohio.

CRAIG, AS mayor, will serve as an ex-officio member of the Bloomfield Hills Planning Commission; City Manager Elmer Kephart will serve as the administrative representative; and Lee was appointed to serve as the third member.

The commission also reappointed Robert J. Stadler as clerk and treasurer and Kephart as assessor and to represent the city on the Oakland County Board of Supervisors.

5 Township Lots To Go on Sale

SOUTHFIELD TOWNSHIP — At the monthly meeting Tuesday, the board authorized Township Clerk Fannie Adams to advertise for bids on five lots at the corner of Kinross and Pierce. The bids will be opened at the May 14 meeting.

The board welcomed its new member, D. Carlton Bell of Franklin.

Twilight

(Continued from 3-A)

was the only course in the area where the 50-cent twilight rate was charged. He said most courses charge \$1.50 for twilight players.

Gare said if the City were to build another nine-hole course it would be possible to establish twilight rates at one of the courses.

THE CITY will study at budget time the possibility of constructing a course on the 60-acre tract of land it owns at Lincoln and Cranbrook roads on the site formerly occupied by the sewage disposal plant.

The Bloomfield Art Association has converted the old sewer plant into an art gallery.

Included in the concept the commission will study are plans for ice skating, ski runs, picnic tables and other sports facilities.

Gare said the plan to eliminate twilight rates at Springdale had been approved by the majority of the members of the advisory board.

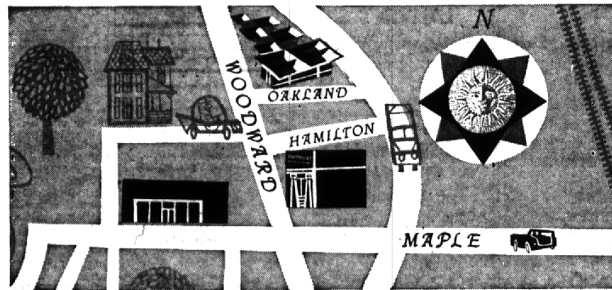
THE COMMISSION also passed a resolution approving the final annexation of a small parcel of land at Springdale to the city.

The small triangular parcel was purchased by the City in 1947 but was located within the limits of Bloomfield Township.

Township officials must now approve the annexation but Gare said he believes there would be no problem.

Remember, dial MI 4-1100 to reach Eccentric readers through efficient and economical classified.

BEST SPOT IN BIRMINGHAM FOR DRIVE-IN BANKING



Woodward-Oakland Drive-In Office

Three other offices to serve you at Woodward-Hamilton, Woodward-14 Mile, and in the Wabek Building.

Drive up, do your banking and drive off.

It's quick. It's convenient. It's casual. You don't park. You

don't walk. You don't wait. Just come as you are to our drive-in

office on Woodward at Oakland. It's close to both our Woodward-

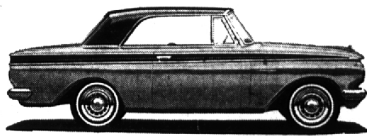
Hamilton and Wabek Building offices . . . and the best spot

in Birmingham for drive-in banking.

DETROIT BANK & TRUST

the Most Experienced Bank in town

MEMBER FDIC



New Rambler American "440" Hardtop

This advertisement approved and the data certified by the United States Auto Club

RAMBLER '63
Winner of Motor Trend Magazine Award: "CAR OF THE YEAR"

BIRMINGHAM RAMBLER, INC., 666 South Woodward Avenue
Select Used Cars, Too. Buy New During Your Rambler Dealer's Used Car VALUE PARADE

APRIL IS FAMILY AFFAIRS MONTH
A good time to put your family's financial affairs in order. Pick up your copy of the Family Affairs Balance Sheet now at any of the four Birmingham offices of Detroit Bank & Trust. It's yours free.