

Behind The Store Fronts

With
ANGUS
McKELLAR



Lake Jewelers, (W. Maple and Woodward) are planning a special showing of pearls April 6 through 13. One of the high points of the display will be a replica of the "Rope of Pearls," the famous necklace which was worn so proudly by Queen Elizabeth of England when she was crowned. According to Art Lake, this is the only replica of its kind, and he would have no idea what the cost would be.

Customers of the Bloomfield Barber Shop, 4075 W. Maple, will want to know that owner Johnny Naide is recuperating at Highland Park General Hospital from a heart attack . . . and doing fine, we hear.

Client Sieweck, manager of Erb-Resnick's Birmingham store on S. Eton Road, is enthusiastically describing the thrills of deep sea fishing near Sanibel Island off Ft. Meyers Beach, Fla. from where he has just returned from a family vacation. Seems that the charter fishing boat the party was on ran into a school of Kingfish, and the fun was on. Over a hundred "Kings" were taken, Clint said.

"What happens to all those fish" we asked.

"Well, the 'customer' generally picks out one to keep, and after the pictures are taken, the charter boat operator tells them. A sort of a bonus, you might say, for steering his party into such good fishing."

Mrs. George (Naomi) Mitchell of the Sportsman (148 Pierce St.)

Peck and Peck Plans Opening At Northland

The 64th branch of Peck & Peck, the Fifth Avenue women's sportswear firm, will open in Northland Shopping Center, Southfield, on April 15.

Says Wallace Peck, president of the firm, "From our long experience with stores located in shopping centers, we realize the importance and great value of a center to the public."

"The Northland Shopping Center, we feel, is one of the finest, if not the finest, areas of this sort in the United States."

Wallace Peck will be joined by Wilbur F. Burt, Jr., executive vice president and sales manager of the firm, and George Peck, vice president in charge of sales promotion, at the opening.

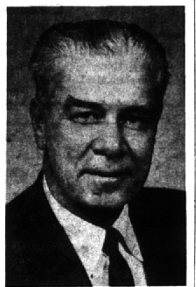
and her husband are back in town, vividly recalling a three-week trip which took them through Austria, Switzerland, France and Holland.

The Mitchells (he's at MacManus, John & Adams, Inc.) enjoyed skiing at the much-talked-of ski resorts of St. Moritz, St. Anton and Kitzbühl. They also skied at other lesser known, but almost equally good, resorts. They did not go into the resort where the typhoid trouble occurred.

The Mitchells also motored from Paris through Belgium to Amsterdam. On the highway they found accommodations equal to anything in this country. A beautiful drive well worth the taking. By driving they were able to get off the beaten track and see the real life of the smaller countryside towns. Flying time back home! Just 10 hours, with one stop at Montreal.

In President's Club

Leon H. Landsberg, 5357 Cambridge Place, Birmingham, has been named to the President's Club of the Connecticut Mutual Life Insurance Co. for his services to policyholders in 1962. He is associated with the Charles E. Stumb Agency in Detroit.



Elected

Harry G. Bowles, vice president and controller, Burroughs Corp., has been elected vice president, finance, by the board of directors. Bowles became controller of the corporation in 1959 and was elected a vice president in 1960. He lives at 6880 Oakhills Drive, Birmingham.

Open House Scheduled by Medical Bldg.

Four Bloomfield residents are included on the board of directors of The Pontiac Medical Building Inc. which will hold open house for the public from 2 p.m. to 5 p.m. Sunday.

Dr. William H. Green of Bloomfield Hills is president. Also on the board are Dr. Arnold Brown, 3539 Wards Point, Bloomfield Township; Dr. Glenn Sanford, 2666 W. Hickory Grove, Bloomfield Hills; and Dr. Z. Endres, 1750 Tiverton Drive, Bloomfield Hills.

The Pontiac Medical Building Inc. houses medical and dental offices of 25 professional men. Located directly across from the Pontiac General Hospital, it is the largest privately owned medical building to be erected in Pontiac in many years.

Electronics Corp. Sets Local Office

A new Detroit district sales office has been established at 960 E. Maple Road, Birmingham, by the Amphelco-Midwestern Connector Division, Amphelco-Borg Electronics Corp.

Gary A. Yeomans, formerly sales engineer in the Cleveland district sales office, has been named manager of the new sales district covering Michigan and a portion of northern Ohio. He lives at 630 Ann St., Birmingham.

Oakland County Accountants Rank Among Top in Nation

The Oakland County Chapter of the National Association of Accountants new stands in fifth place out of two hundred chapters in the Stevenson Trophy Contest. The standing is a comparative measure of the effectiveness and efficiency of the chapter's operation.

James Crandall of Rochester, president of the Oakland County Chapter, complimented John Johnson, director of manuscripts, and Donald Cabral, director of membership, for their effectiveness in difficult areas for any organization.

Johnson is a resident of Birmingham, and Cabral lives in Bloomfield Township.

Bank Officer Serves For Special Month

Norman B. Weston, vice president and trust officer of the National Bank of Detroit, who resides at 944 Kennesaw, Birmingham, has been named as vice chairman of Family Affairs Month to be held in April.

The four professions concerned with financial planning — law, banking, insurance and certified accountants—are cooperating to stage this public service event.

NEWS OF BUSINESS

Automobile Club Elects Residents as Directors

The Birmingham-Bloomfield-area men have been elected members of the board of directors of the Automobile Club of Michigan.

They are William B. Bachman, Jr., 715 Oakleigh, Bloomfield Hills, and Rex Brubaker, 18525 Riverside Drive, Birmingham.

Bachman is senior vice president of McManus, John & Adams advertising agency. He was an Auto Club membership counselor in Grosse Pointe for two years after service as a lieutenant in the Navy during World War II.

FOR TWO MORE years he wrote

Auto Club's radio and TV advertising copy for Stockwell and Marcy advertising agency.

Brubaker spent his boyhood in the Detroit area helping Auto Club workmen install road, stop, school and city limits signs for AAA. His father, William B. Bachman, Sr., was a founder, original director

and for 43 years membership director of the Auto Club.

Brubaker is president of Automotive Bin Service Corp. and Ideas, Inc., designers of storage systems and inventories for auto dealer parts departments.



GEORGE H. CARY

Professionals Pick Cary as President

George H. Cary of 1070 Timberlake, Bloomfield Hills, a practicing attorney in Detroit, took office April 1 as president of the Michigan Association of the Professions. Among those serving on the board of directors is Luther E. Leader, MD, 394 Cranbrook Road, Bloomfield Hills.

Podiatrist Speaks

Dr. Donald Schubert, Birmingham podiatrist, was the featured speaker at the annual Foot Care Conference of the Podiatry Society at the Hotel Statler-Hilton in New York City last week end. He resides in Orchard Lake.

General Motors Names Residents In Staff Changes

Two Birmingham-Bloomfield-area men have been named in organization changes at General Motors, effective May 1, which were announced following Monday's meeting of the board of directors.

Philip J. Monaghan, vice president, was appointed group executive in charge of the Dayton, Household Appliance and Electromotive Group. Monaghan has been a vice president of General Motors since 1953 and in charge of the G M Manufacturing Staff since 1960.

EDWIN C. Klotzburger, vice president, was appointed group executive in charge of the Body and Assembly Group. Klotzburger has been a G M vice president and general manager of the Fisher Body Division since 1958.

Monaghan lives at 940 Cranbrook, Bloomfield Hills, and Klotzburger at 1050 Glenhurst, Birmingham.

Accepts Certificate

Harold W. H. Burrows, vice president, administration for Parke, Davis & Co., recently accepted a certificate in recognition of Parke-Davis' charter membership in the Drug, Chemical and Allied Trades Association, founded in 1890. Burrows resides at 868 N. Adams Road, Birmingham.

Residents Promoted By Chevy Engineering

A series of promotions at the Chevrolet Engineering Center has been announced by E. J. Premo, chief engineer of the company. Four men were advanced to the new positions of executive engineer. Named by Premo are:

Theodore E. Dougherty, 32840 Wentworth, Beverly Hills, to executive engineer in charge of administration and production engineering liaison.

Carl C. Jakust, 2508 Worcester Road, W. Bloomfield Township, executive engineer in charge of passenger car body, electrical and accessory design.

Alex C. Mair, 5693 Kelly Road, as executive engineer in charge of truck body and chassis.

Maurice S. Rosenberger, 3465 Broadway Boulevard, Birmingham, to executive engineer in charge of passenger car chassis and engines.

AREA RESIDENTS also promoted by Premo:

Alex C. Aitken, 5301 Lauren Court, Bloomfield Hills, to chief administration engineer.

Victor D. Valade, 2409 Ogden Drive, Orchard Lake, to staff engineer.

Paul J. King, 2460 Ogden Drive, Orchard Lake, to staff engineer.

Dougherty was born in Sheboygan, Wis., and saw service in the NAVY before attending a four-year course at the General Motors Institute in Flint. Upon graduation he was assigned to the Chevrolet central office engineering laboratory. He transferred to the general Motors Engineering staff in 1947 and later served as assistant director of the Proving Ground at Milford.

Dougherty returned to Chevrolet in 1953. He was an assistant superintendent of the experimental division and in 1956 was made a staff engineer. He had been an assistant chief engineer since 1957. He is married and a member of the Society of Automotive Engineers and the Engineering Society of Detroit.

Jakust, a native Detroit, attended Wayne State before joining Chevrolet in 1937 as a detailer. He joined the air force in 1942 and returned to Chevrolet in 1947. He was a project and design engineer before being named staff engineer in charge of passenger car bodies in 1956.

He became assistant chief engineer in 1959. He is married and has two daughters.

MAIR WAS BORN in Flint and attended the General Motors Institute there under the sponsorship of Chevrolet. Upon graduation in 1943 he joined Chevrolet as a detailer before two years service as an engineering officer in the Navy.

Mair was assigned as a service engineer and later truck field work following the war. He was a project engineer in the truck chassis group and in 1961 appointed assistant chief engineer in charge of truck engineering. He is a member of the Society of Automotive Engineers and is married and has one son.

Rosenberger is a native of Iowa who attended Nebraska Wesleyan University. He was first employed by Cadillac as a dynamometer operator in 1927 and later transferred to General Motors to work on transmission development. He transferred to Chevrolet as a staff engineer in 1952 and was made an assistant chief engineer in 1956. Rosenberger is married and the father of two children. He is a member of the Society of Automotive Engineers and Forest Lake Country Club.

AITKEN IS A former staff engineer who was born in Scotland and educated in Detroit. He started with the company in 1939 and in 1952 became assistant staff engineer in charge of drafting. The Aitkens have two children.

Valade has been an assistant staff engineer and experienced in both passenger and truck design in a 13-year career with Chevrolet. The Valades have two sons, Victor, Jr. and Ronald.

King was product program coordinator before his latest promotion. He joined the General Motors engineering staff in 1947 and was transferred to Chevrolet seven years later. He is married and has two children.

The Birmingham Eccentric Classified pages offer you a fine opportunity to sell your unwanted household goods.

Dura Corp. Picks 2 for Promotion

William M. Block has been named controller and William J. Hermann appointed group executive by Dura Corp., diversified manufacturing organization.

Block, formerly assistant to the controller, has been with Dura since 1956. Earlier he was with Gar Wood Industries, Inc.

Hermann joined Dura in 1961 from Vickers, Inc., and until his recent appointment was assistant to the president.

Block lives at 17595 Roseland Blvd., Lathrup Village. Hermann makes his home at 2515 Amberly, Birmingham.

Going Formal?

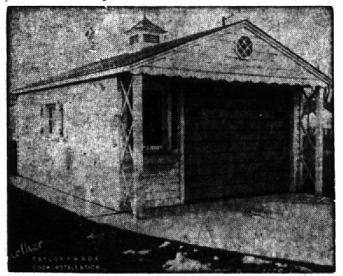
Visit our complete formal wear rental department. Our formal wear consultant will answer all your questions . . . and attire you in the proper dress. Men's sizes 33 to 58, Boy's sizes 2 to 20 available. One day service and perfect fit guaranteed. Rent it today!

CALL OUR CONSULTANT
Mr. Saffer will answer
all questions.
644-9763

Todd's
GENTEX SHOPS
159 W. MAPLE
BIRMINGHAM



IT'S GARAGE TIME at ERB-RESTRICK!



1 1/2 CAR-GABLE ROOF W/OVERHANG

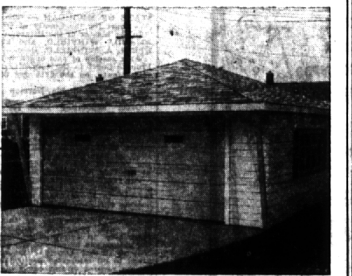


2 CAR-GABLE ROOF W/OVERHANG

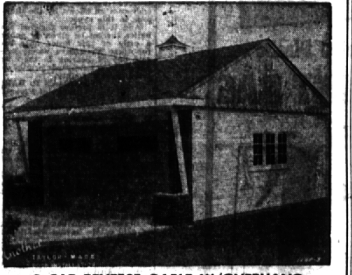
GET PRICES?
Of course, but MAKE
SURE ONE IS OURS!

From ERB-RESTRICK
you can count on:

- QUALITY MATERIALS
- FREE PLANS
- 235 lb. ASPHALT SHINGLES
- CHOICE OF SIDING
- FREE DELIVERY
- CHOICE OF SPECIAL TRIMS
- QUALIFIED GARAGE BUILDERS RECOMMENDED
- YOU'LL LIKE OUR "HOUSE DOCTOR" SERVICE. SEE HIM TODAY!



2 CAR HIP ROOF W/OVERHANG



2 CAR REVERSE GABLE W/OVERHANG

KNOTTY PINE PANELING
6" - 8" - 10" WIDTHS
Random Lengths
17 1/2¢ Sq. Ft.

ERB-RESTRICK
2015 N. MAIN STREET, SUITE 100
BIRMINGHAM, AL 35202

SPRING SALE
Mac-O-Lac Interior LATEX PAINT
Choice of Colors
Reg. \$6.59 Gal. **\$4.99** Gal.

planning a home?
We can assist you with...

1. A Conventional Open End Mortgage
2. Long Terms
3. Low Cost
4. Taxes and Insurance Included in Your Payment
5. Payments Like Rent
6. Friendly Understanding and Attention to Details from Our Staff of Specialists in Home Financing

Come in and let us help you
"move into your new home"
sooner!



"Instituted for Local People . . . by Local People"

Birmingham
FEDERAL SAVINGS
99 W. Maple
Corner of Pierce
ML 4-1711
Berkley
3055 W. 12 Mile Rd.
LI 5-7610